

ETJ21-01 Lowell Relinquishment

Applicant: Gaston County Planning Board

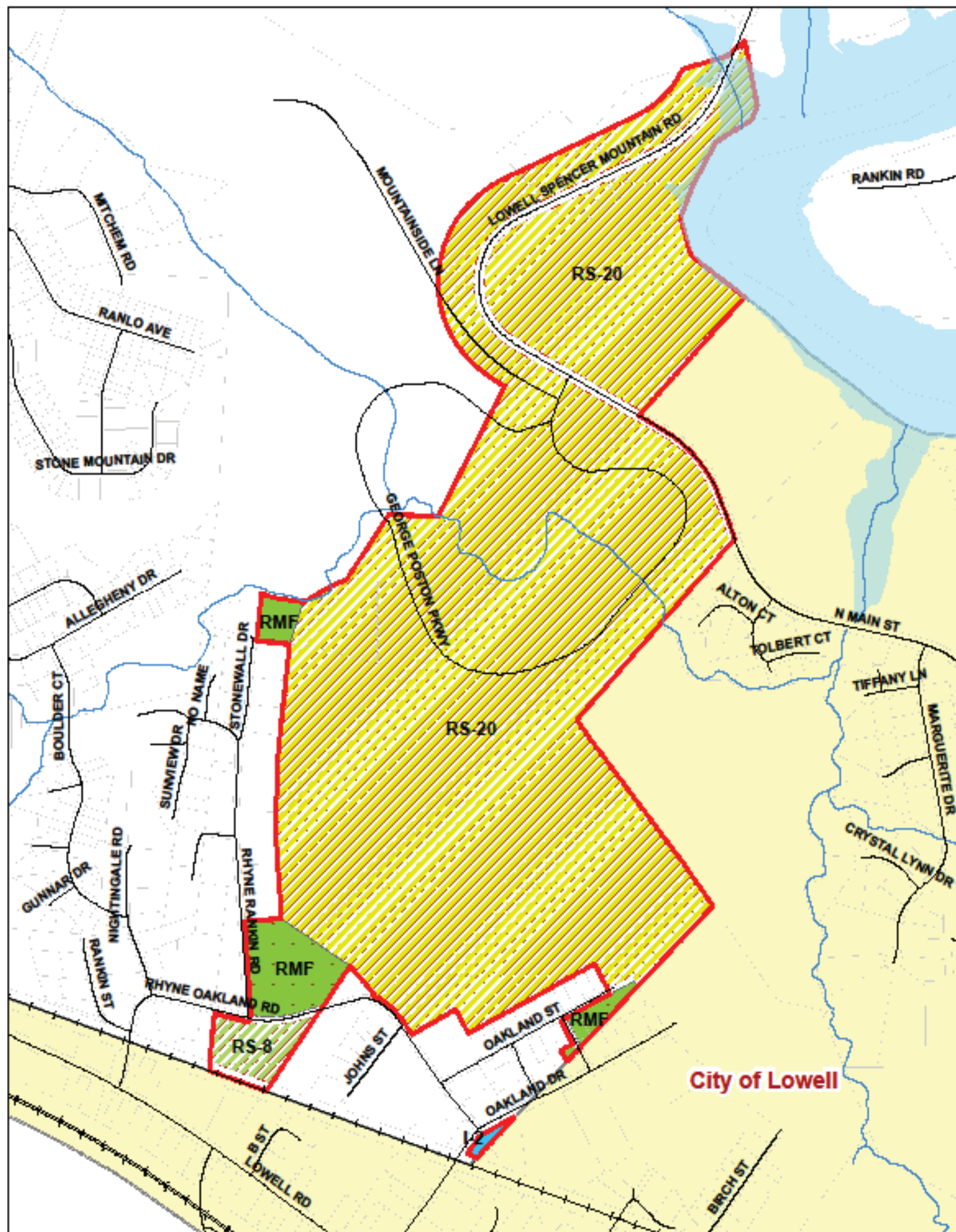
Proposed Zoning Districts: (RS-8) Single Family 8,000 sq ft, (RS-12) Single Family 12,000 sq ft, (RS-20) Single Family 20,000 sq ft, (RMF) Residential Multi Family, (C-3) General Commercial, (I-2) General Industrial

Parcels: Multiple

Total Property Acreage: 372.76 ac





Acreage for Map Change: 372.76 ac

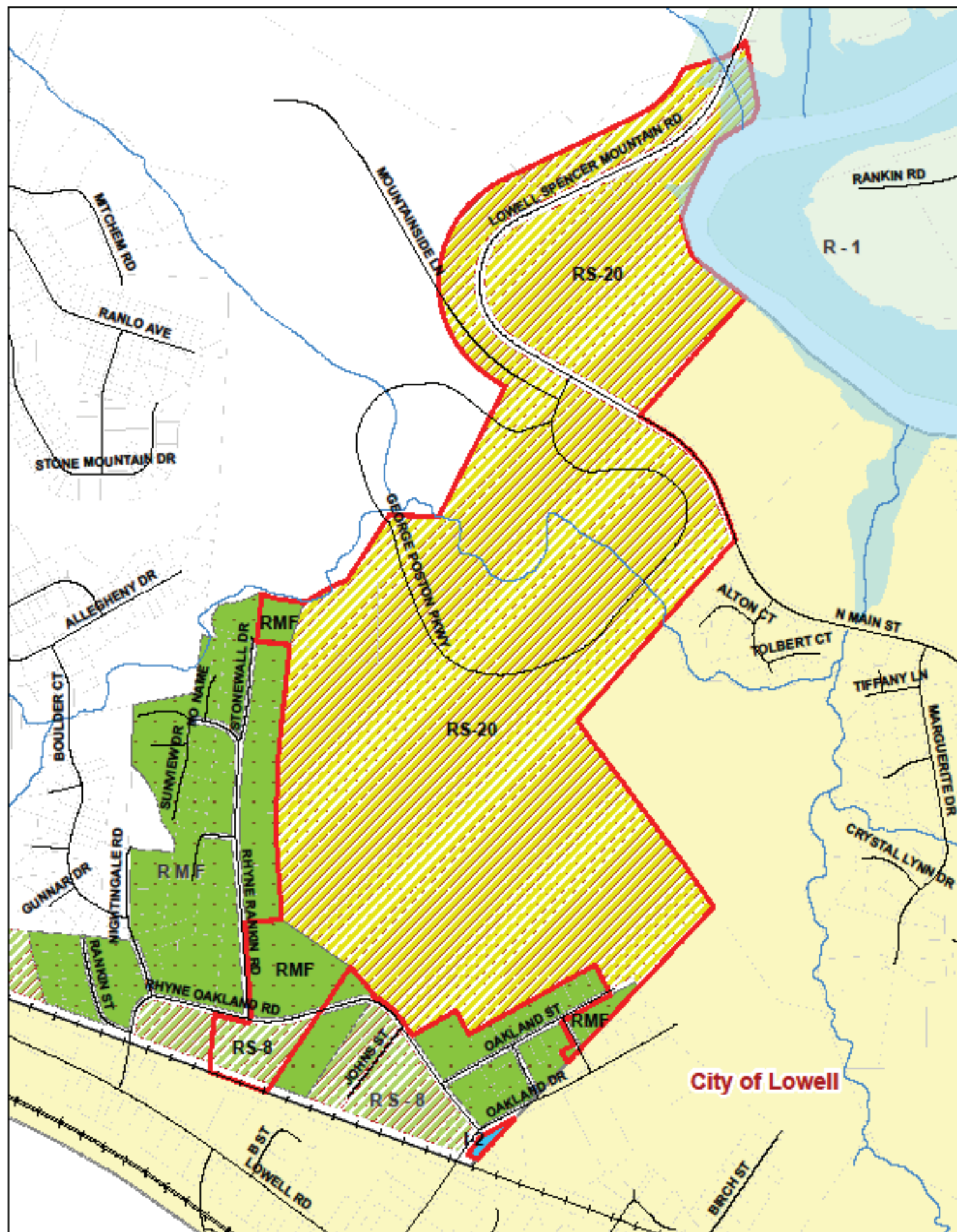





AREA 1 - City of Lowell ETJ Relinquish





 ETJ Relinquish Area

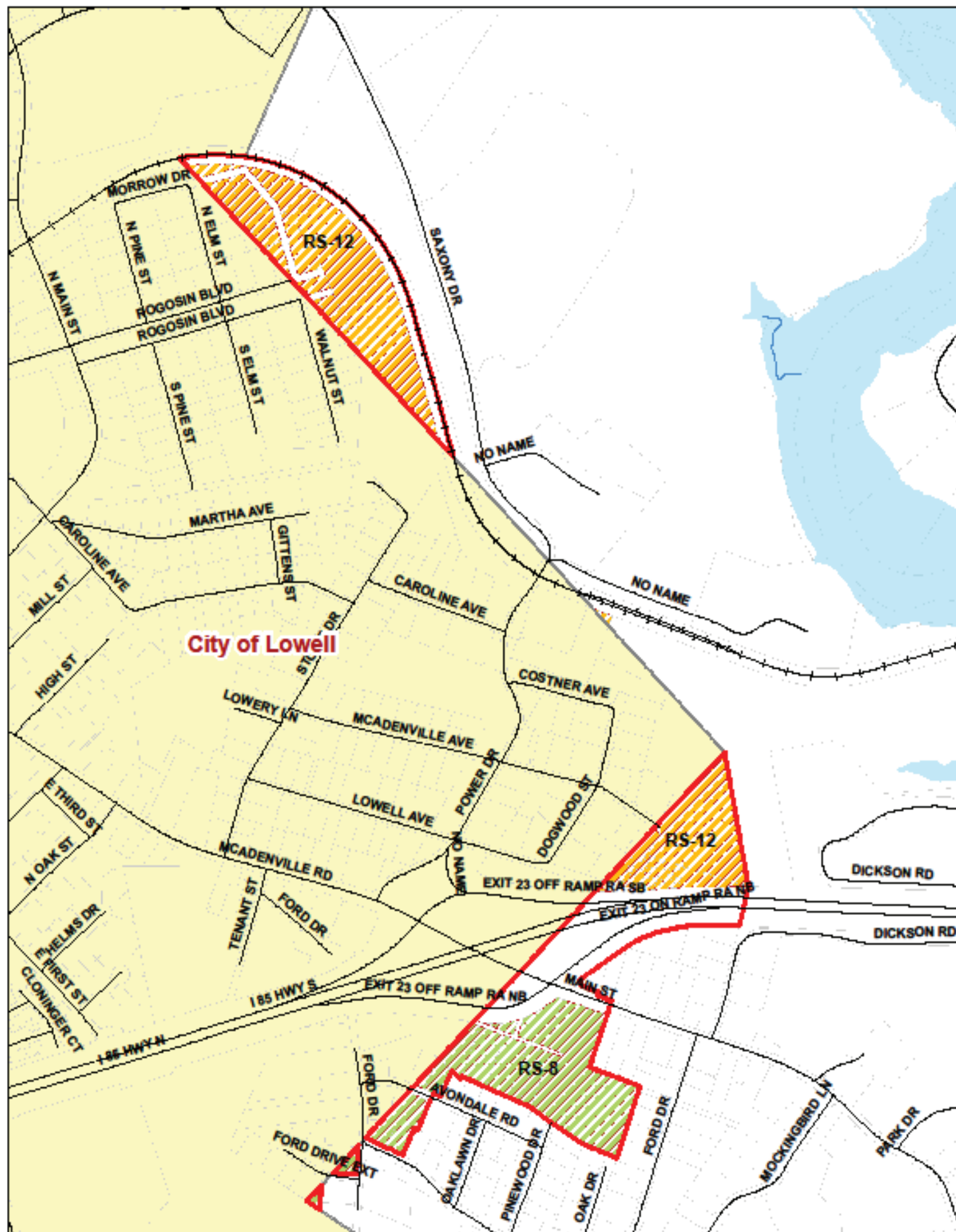
 RS-8 Residential 8,000 sq.ft.
 RS-20 Residential 20,000 sq.ft.
 RMF Residential Multi Family
 I-2 General Industrial



**AREA 1 - City of Lowell ETJ Relinquish
with existing County Zoning Districts**

 ETJ Relinquish Area

 RS-8 Residential 8,000 sq.ft.
 RS-20 Residential 20,000 sq.ft.
 RMF Residential Multi Family
 I-2 General Industrial

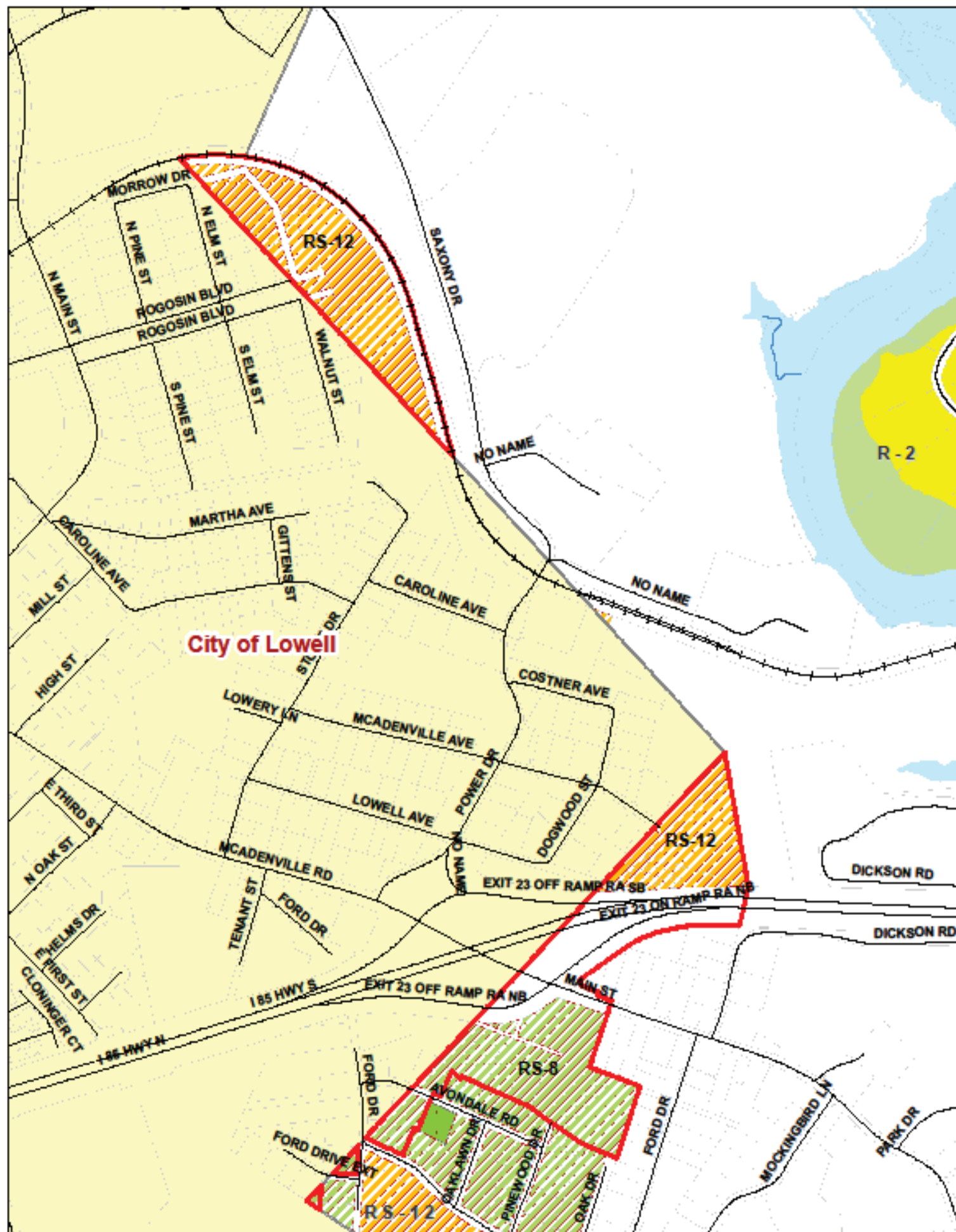


AREA 2 - City of Lowell ETJ Relinquish

ETJ Relinquish Area

RS-8 Residential 8,000 sq.ft.

RS-12 Residential 12,000 sq.ft.

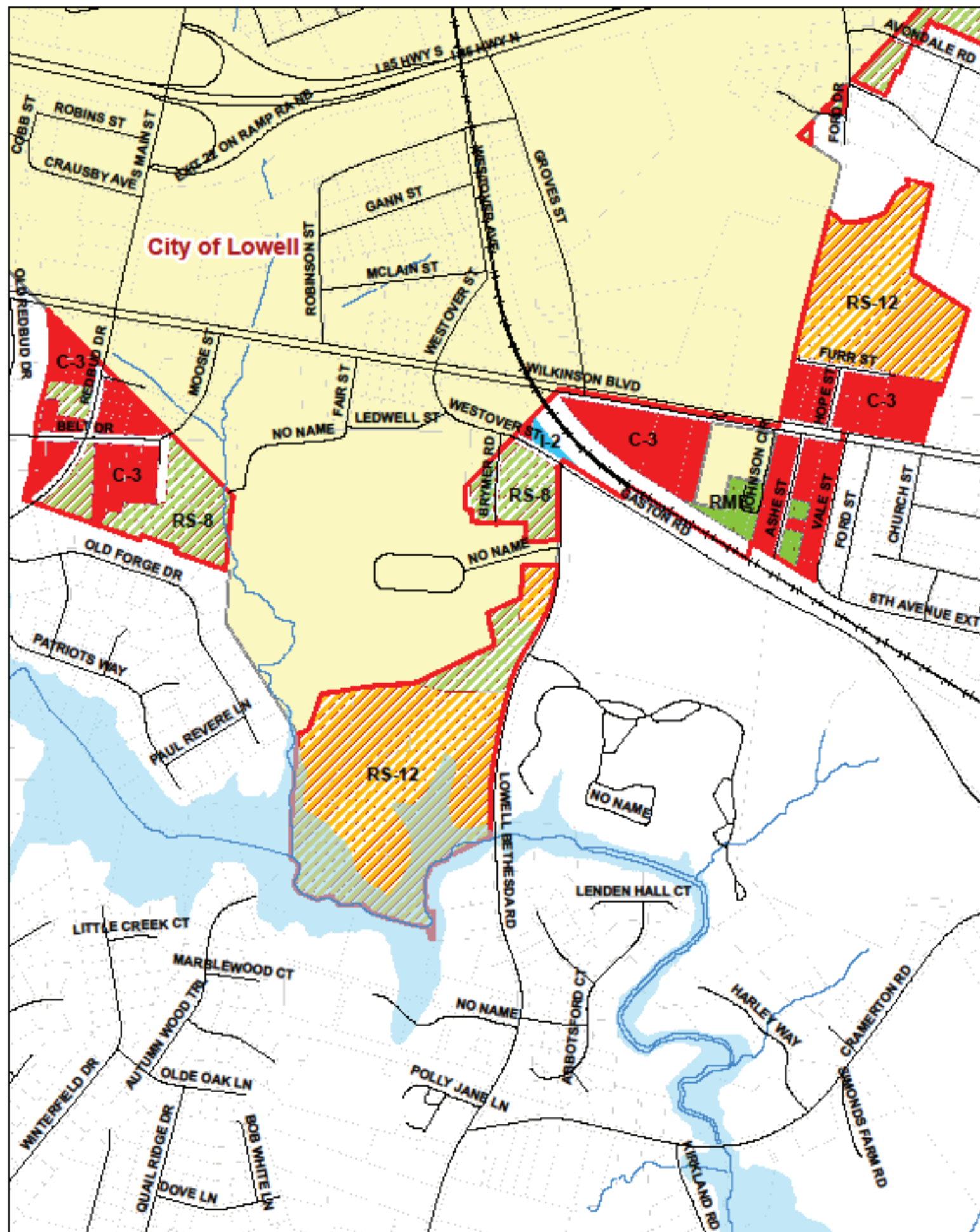


**AREA 2 - City of Lowell ETJ Relinquish
with existing County Zoning Districts**

ETJ Relinquish Area

RS-8 Residential 8,000 sq.ft.

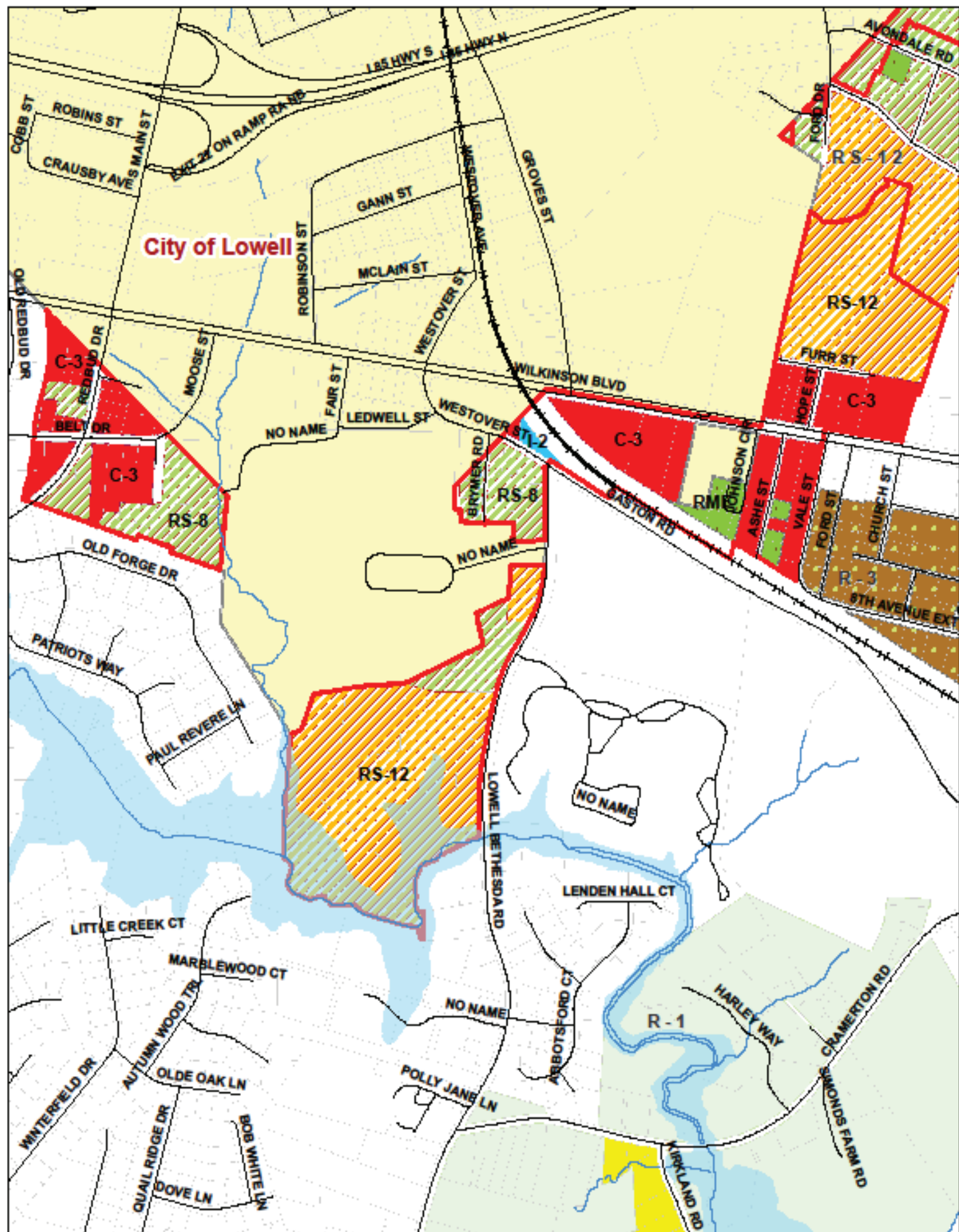
RS-12 Residential 12,000 sq.ft.



AREA 3 - City of Lowell ETJ Relinquish

ETJ Relinquish Area

C-3 General Commercial
 RS-8 Residential 8,000 sq.ft.
 RS-12 Residential 12,000 sq.ft.
 RMF Residential Multi Family
 I-2 General Industrial



**AREA 3 - City of Lowell ETJ Relinquish
with existing County Zoning Districts**

ETJ Relinquish Area

C-3 General Commercial
 RS-8 Residential 8,000 sq.ft.
 RS-12 Residential 12,000 sq.ft.
 RMF Residential Multi Family
 I-2 General Industrial