



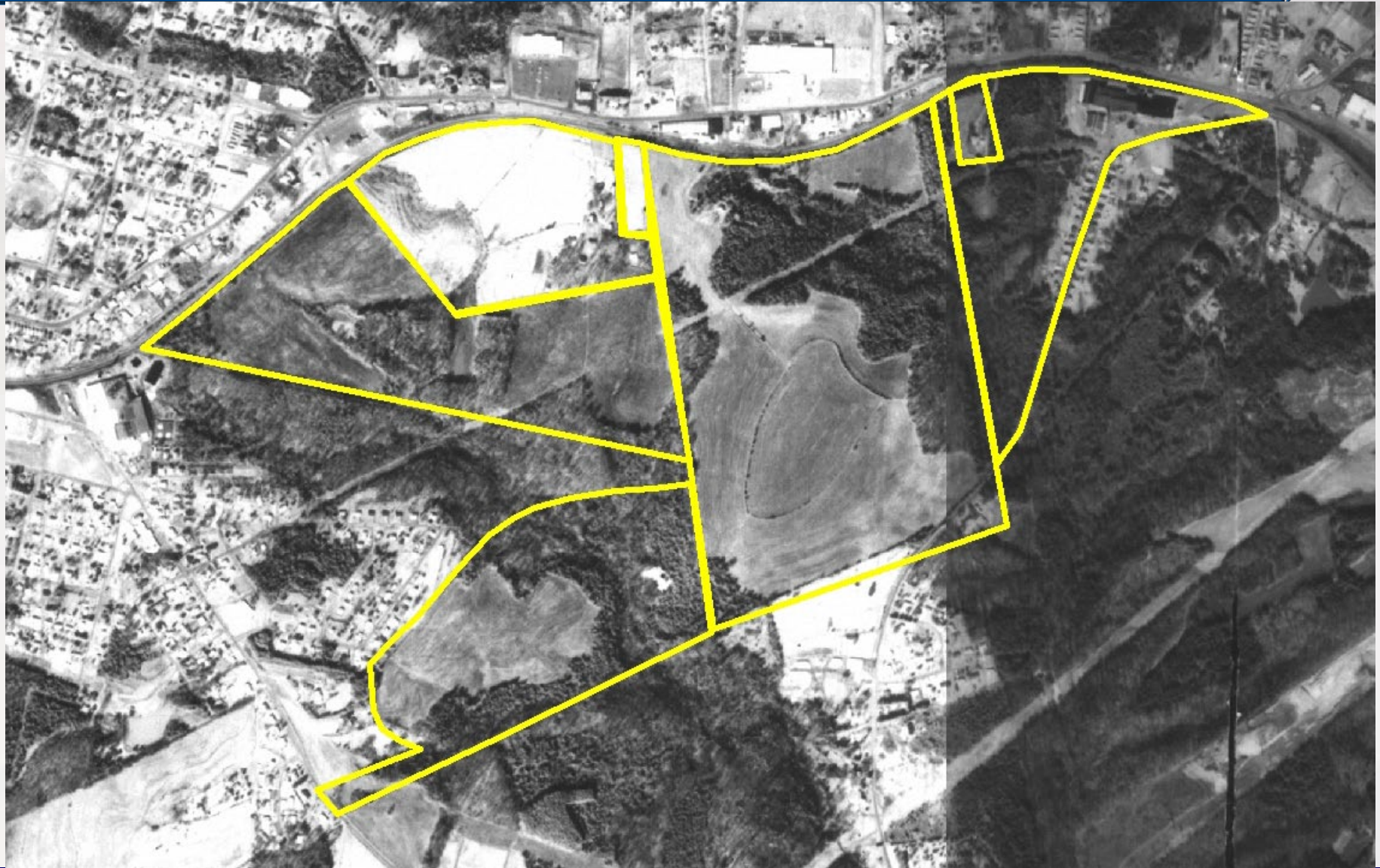
Gaston County EDC

Board of Commissioners Meeting

Bessemer City, NC
February 11th, 2020

South Ridge Business Park

THEN: 1983



NOW: 2020



Advanced Drainage Systems



- Leading manufacturer of corrugated polyethylene drainage pipe products
- Located in 1999 and had recent expansions in 2018 & 2019 with announced investment of over \$12 million, 13 new employees and 25,000 SF
- Over 50 employees
- 85,000 SF facility
- Has lead the research in the industry since the 1960's

Hunter Douglas



- Windows Design Division Headquarters
- Over 150 employees
- Purchased Building in 2004
- Window coverings have earned top awards from the Window Covering Manufacturers Association, the benchmark of the industry
- 185,000 SF facility

Dole Foods



- Provides distribution for southern and Eastern U.S. (bagged lettuce division)
- Investment of \$54 million in 2005
- 269,000 SF facility
- 525 jobs within the first 3 years
- 850 current jobs

Tosaf



- Based in Israel, first facility in USA
- Announced in December 2014
- Currently has 78 employees
- Produces advanced polymers and compounds
- \$13.1 initial investment
- 106,000 SF facility

Dhollandia



- Based in Belgium
- Announced in December 2017
- Plans to create 150-200 new jobs
- Manufacturers hydraulic lifts for vehicles
- Initial investment of \$26 million with the potential to increase to \$30 million
- 256,000 SF facility