

Road to the 2020 Census



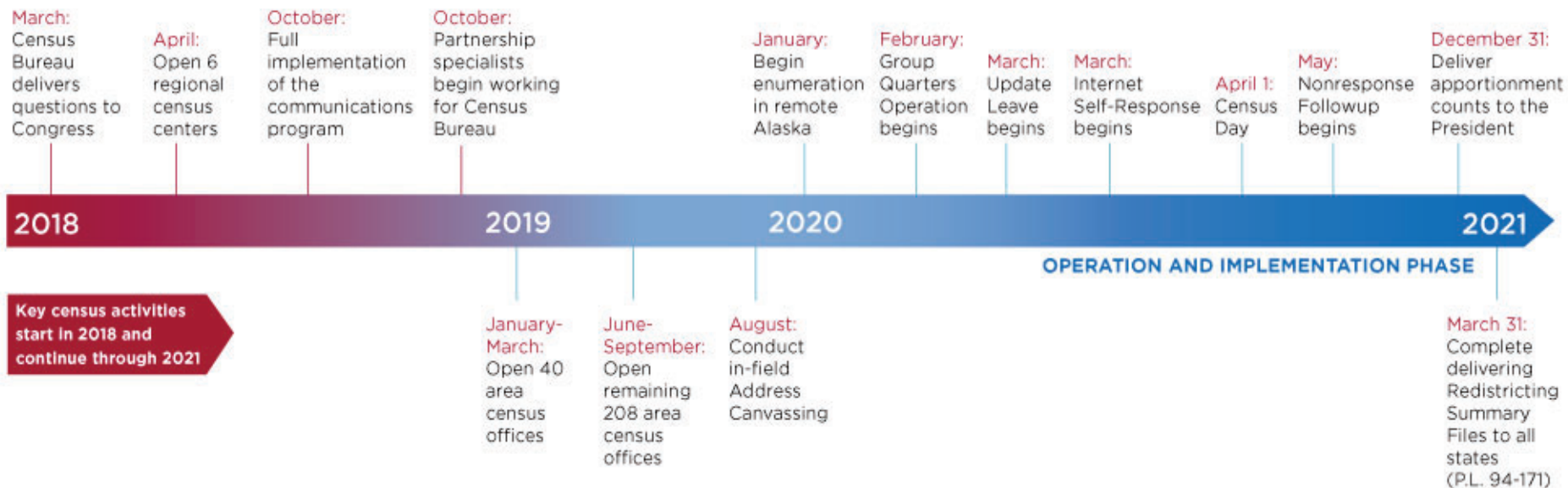
"Count everyone once, only once, and in the right place."

Gaston County Planning & Development Services

October 9, 2018

Road to the 2020 Census

2020 Census Operational Timeline



2010 Participation Results

National Participation Rate: 74%

North Carolina Participation Rate: 76%

Gaston County Participation Rate: 78%



2010 Participation Results

National Participation Rate: 74%

North Carolina Participation Rate: 76%

Gaston County Participation Rate: 78%

2000 Participation Results

National Participation Rate: 72%

North Carolina Participation Rate: 66%

Gaston County Participation Rate: 68%

“Hard to Count” Population

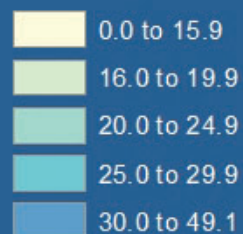
- Racial and Ethnic minorities
- Linguistic minorities
- Lower Income persons
- Homeless persons
- Undocumented immigrants
- Young mobile persons
- Children



Low Response Score (%) by Census Tracts from 2016 Planning Database



Low Response Score



0 5 Miles

Source: U.S. Census Bureau

Learning about each hard-to-survey area allows the U.S. Census Bureau to create a tailored communication and partnership campaign, and to plan for field resources including hiring staff with language skills. These and other efforts can improve response rates.

Although strict accuracy standards have been employed in the compilation of this map, Gaston County does not make or imply any warranties or assume any responsibility for the information presented on this map or its use.

This map may not be resold or otherwise used for trade or commercial purposes without the expressed written consent of Gaston County, in accordance with North Carolina General Statute 132-10.

Created by: Planning GIS Division
Date: October 5, 2018

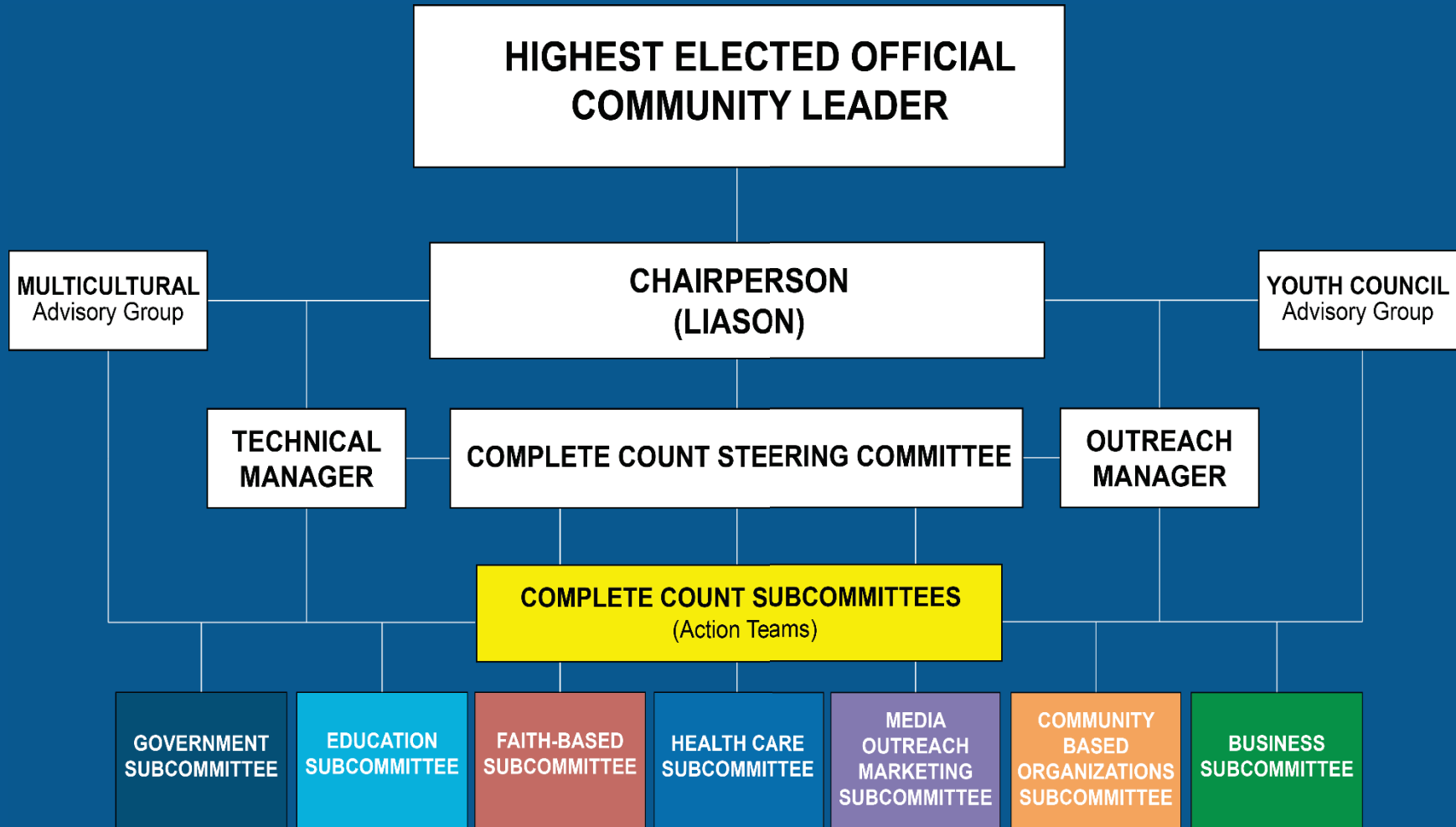
"Count everyone once, only once, and in the right place."

United States
**Census
2020**

What is a Complete Count Committee?

- CCCs are volunteer teams.
- CCCs consist of community leaders, faith-based groups, schools, businesses, media and others.
- CCCs are appointed by elected officials and work together to make sure communities are counted.

Structure of the Complete Count Committee



Gaston County Complete Count Committee

The mission of the Gaston CCC is to reach all segments of the community by creating the awareness about the upcoming 2020 Census.

The goal of the CCC is to increase The mail-back response rate through a focused, structured, and detailed neighbor-to-neighbor program.

The role of the Steering Committee is to work with the CCC Chairperson and the Subcommittees in developing a plan to get all Citizens of Gaston County counted.



Strategies



Strategies



Strategies



Strategies




United States
**Census
2020**

Census data will determine how
\$600 BILLION
is allocated to local, state, and
tribal governments to build a
better community.

**“Your Future is
in your Hands”**

It's easy. It's important. It's safe.
www.2020census.gov

Remember Census Day
April 1, 2020



Search Our Site! Home | Departments | Events Calendar | Maps/GIS | Document Center | Job Opportunities

Planning & Development Services
Census 2010 (U.S. Population Count)

What is the Census?
About 2010 Census
2010 Census Jobs
Census Practice Test
Timeline of Activities
Coloring and Activity Book
FAQs

Newsletters
The Countdown - March Issue

Local Governments Info
American Planning Association - Census 2010 Article
2010 Census Partnership Agreement Form
2010 Census Materials (What you need to know about the 2010 Census).
NC Counties 2007 Population Estimates
NC Counties 2006 Population Estimates Map
Municipal Population Estimates 1990, 2000, 2007
Census 2000 Info

Presentations
Nations Changing Demographic Environment
GCaMP Census Presentation (Oct. 31, 2008)

Links of Interest

- <http://www.census.gov>
- <http://www.census.gov/rocha/www/>
- <http://factfinder.census.gov>
- <http://www.census.gov/acs>
- <http://www.osbm.state.nc.us>
- <http://linc.state.nc.us>
- <http://www.co.gaston.nc.us/Planning/demographics.htm>

Disclaimer Alternate Language Webmaster

Did you find this website helpful? Yes or No.

High Shoals Town Hall
109 N Lincoln St.
High Shoals, NC 28077
Phone: 704.735.1651

Dallas Library
105 S Holland St.
Dallas, NC 28034
Phone: 704.922.3621

Gaston County Census 2010

Questionnaire Assistance Centers & Be Counted Sites



Mt. Holly Library
245 W Catawba Ave.
Mount Holly, NC 28120
Phone: 704.827.3581

Bessemer City Library
207 N Twelfth St.
Bessemer City, NC 28016
Phone: 704.629.3321

Gaston Main Library
1555 E Garrison Blvd.
Gastonia, NC 28054
Phone: 704.868.2164 ext. 100

Lowell Library
203 McAdenville Rd.
Lowell, NC 28098
Phone: 704.824.1266

Belmont Library
125 N Central Ave.
Belmont, NC 28012
Phone: 704.825.5426

Stanley Library
205 N Pryor St.
Stanley, NC 28164
Phone: 704.263.4166

Ferguson/Erwin Library
913 N Pryor St.
Gastonia, NC 28052
Phone: 704.868.8046

Lowell Community Center
505 W First St.
Lowell, NC 28098
Phone: 704.824.3518 or 704.824.0099

Boys & Girls Gaston County
326 S Boyd St.
Gastonia, NC 28054
Phone: 704.810.9524

YMCA - Stowe Family Branch
196 YMCA Dr.
Belmont, NC 28012
Phone: 704.822.9622

Cherryville Community Center
106 S Jacob St.
Cherryville, NC 28021
Phone: 704.435.1700

Bessemer City Recreation Dept.
220 S 14th St.
Bessemer City, NC 28016
Phone: 704.629.5111

Gaston College (Belmont Campus)
7220 Wilkinson Blvd.
Belmont, NC 28012
Phone: 704.825.3737



0 2.5 5 Miles

"Q&A Centers" and "Be Counted Sites" are in the same place. If you have any questions about your Census Form, please contact one of these Q&A Centers. Most of these locations will be open on March 19, 2010. If you don't receive the Census Questionnaire, you can go to one of these locations and fill one up. Questionnaire assistance centers are staffed by census employees and have available the language assistance guides (in 59 languages) and the full questionnaires in 6 different languages (English, Spanish, Chinese, Vietnamese, Korean, and Russian). We're hopeful these centers will reduce the burden for some people to participate in the census.



Map compiled by the Gaston County Planning & Development Services. Transportation, Hydrography and other major surface features shown were automated from 2005 - 1:2400 scale orthophotography. (NC State Plane Coordinate System NAD 83). Property Parcels, automated by Gaston County Tax Department from recorded deeds and available photography.

Although strict accuracy standards have been employed in the compilation of this map, Gaston County does not make or imply any warranties or assume any responsibility for the information presented on this map or its use.

This map may not be resold or otherwise used for trade or commercial purposes without the expressed written consent of Gaston County, in accordance with North Carolina General Statute 132-10.

Created by Planning GIS - J.Garcia.
Date: March 19, 2010. - 10:40 a.m.

United States
**Census
2010**

Legend

- Be Counted Sites
- Streets
- Census Tracts
- Municipal Areas
- Rivers
- County Area

Important Changes to the 2020 Census

- More accurate address list and automated field operations.
- For the first time, you will be able to respond online, by phone, or by mail.
- Citizenship question added to the questionnaire.
- Questionnaire assistance in thirty four (34) different languages.
- Detailed questions about ethnicity and national origin for all races.

Potential Impacts in North Carolina

- Every decade, the 435 seats in the U.S. House of Representatives are divided among the states based on their total population decennial count.
- The Census also determines the allocation of more than half trillion dollars in federal funds, including more than \$16 billion annually to North Carolina.
- Renters, African American, American Indians, and Hispanics were among the groups with higher rates of undercount in 2010. The highest undercount group was children ages 0-4.

Potential Impacts in North Carolina

- In North Carolina, the Census Bureau estimates that more than 25,000 young children were not counted in 2010, the 8th largest number of any state.
- In 2010, the Census Bureau estimated that one person in North Carolina represented at least \$1,100 per year in federal funds.
- For 2020 Census, the Bureau estimates that every person counted translates to \$1,800 per year in federal funds.

2020 Census Jobs Available!

- Excellent Pay
- Flexible Hours
- Paid Training
- Temporary Positions

Apply Online Today!

2020census.gov/jobs

1-855-JOB-2020

(1-855-562-2020)

Federal Relay Service: (800) 877-8339 TTY / ASCII

www.gsa.gov/fedrelay

The Federal Relay Service (FedRelay) provides telecommunications services to allow individuals who are deaf, hard of hearing, and/or have speech disabilities to conduct official business with and within the federal government.

The U.S. Census Bureau is an Equal Opportunity Employer.

Thank you!

United States[™]
Census
2020

*“Count everyone once, only once, and
in the right place.”*