

COVID-19 Update to the Board of Commissioners

Steve Eaton, MPH
Gaston County Public Health Director



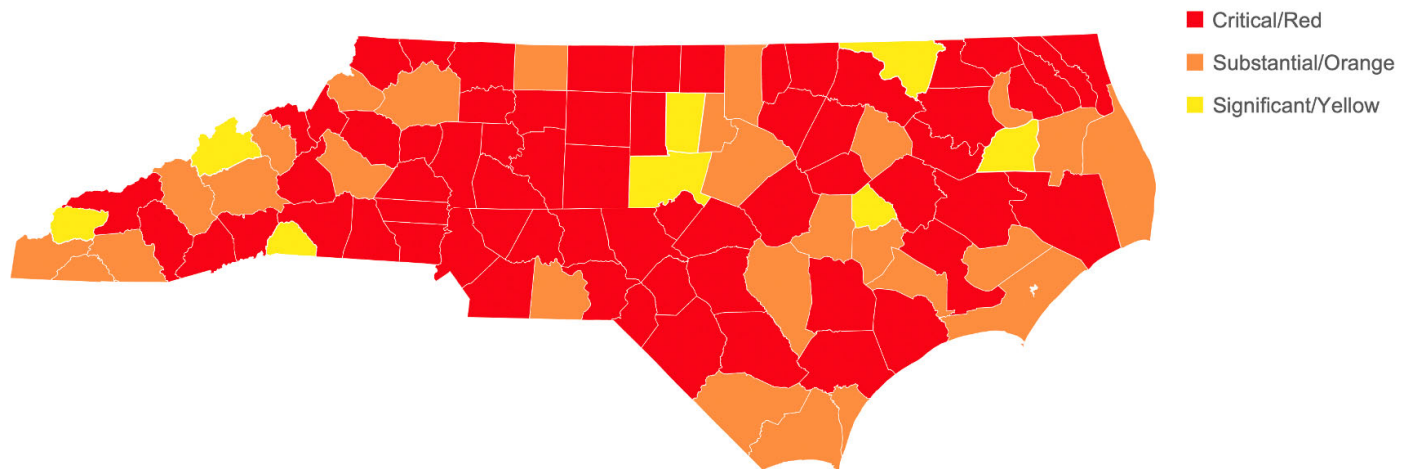


Introduction & Overview

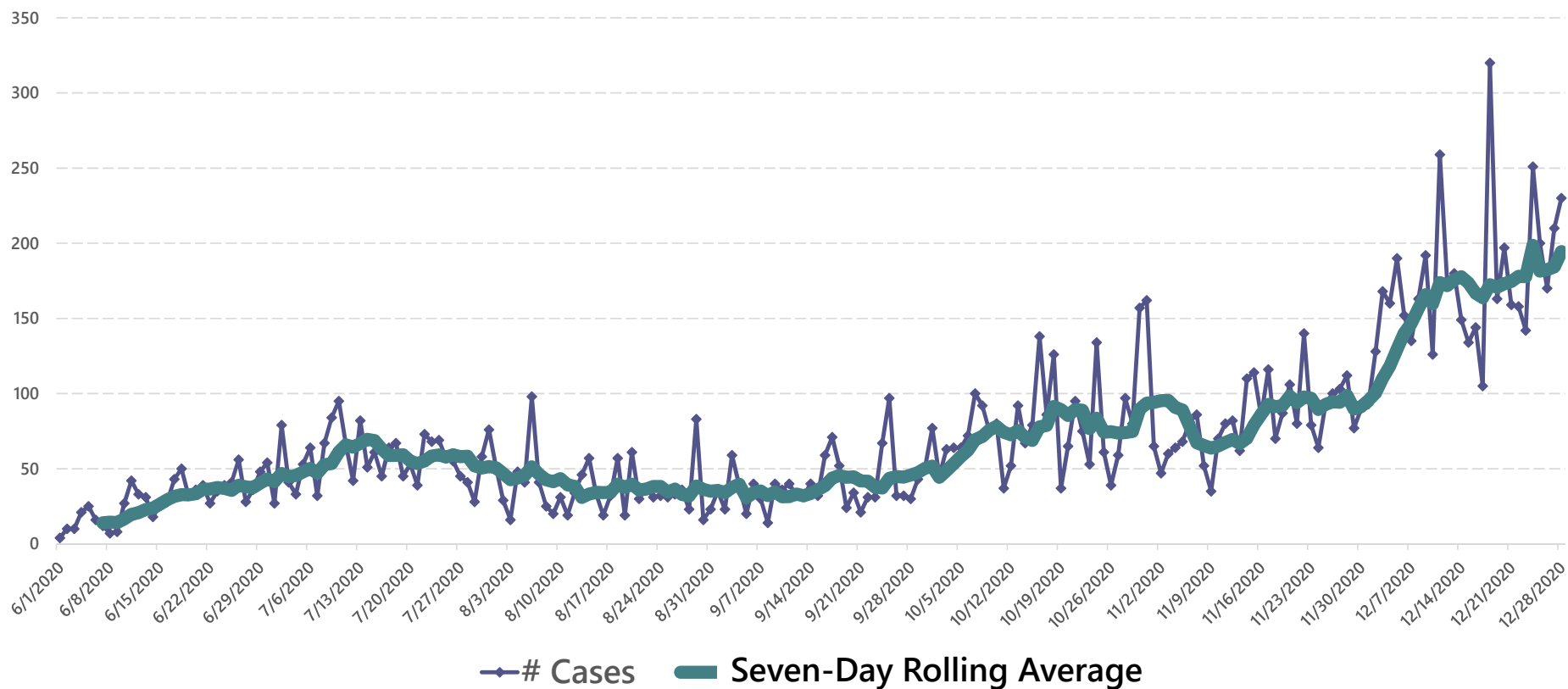
- **Situational Update**
- **Vaccination Planning**
- **Questions**

County Alert System

NC Counties by Tier: Data from December 5 through December 18, 2020

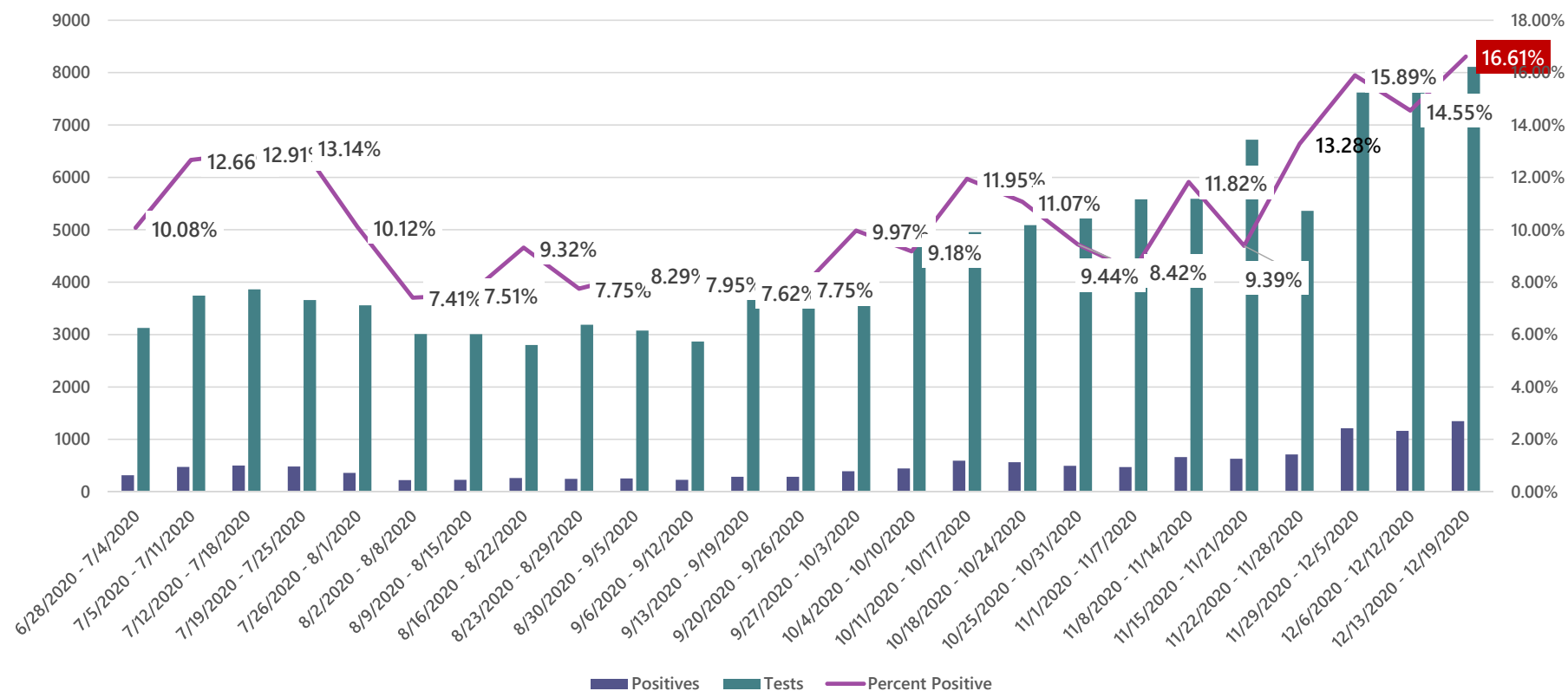


GASTON COUNTY COVID-19 CASES BY DATE REPORTED



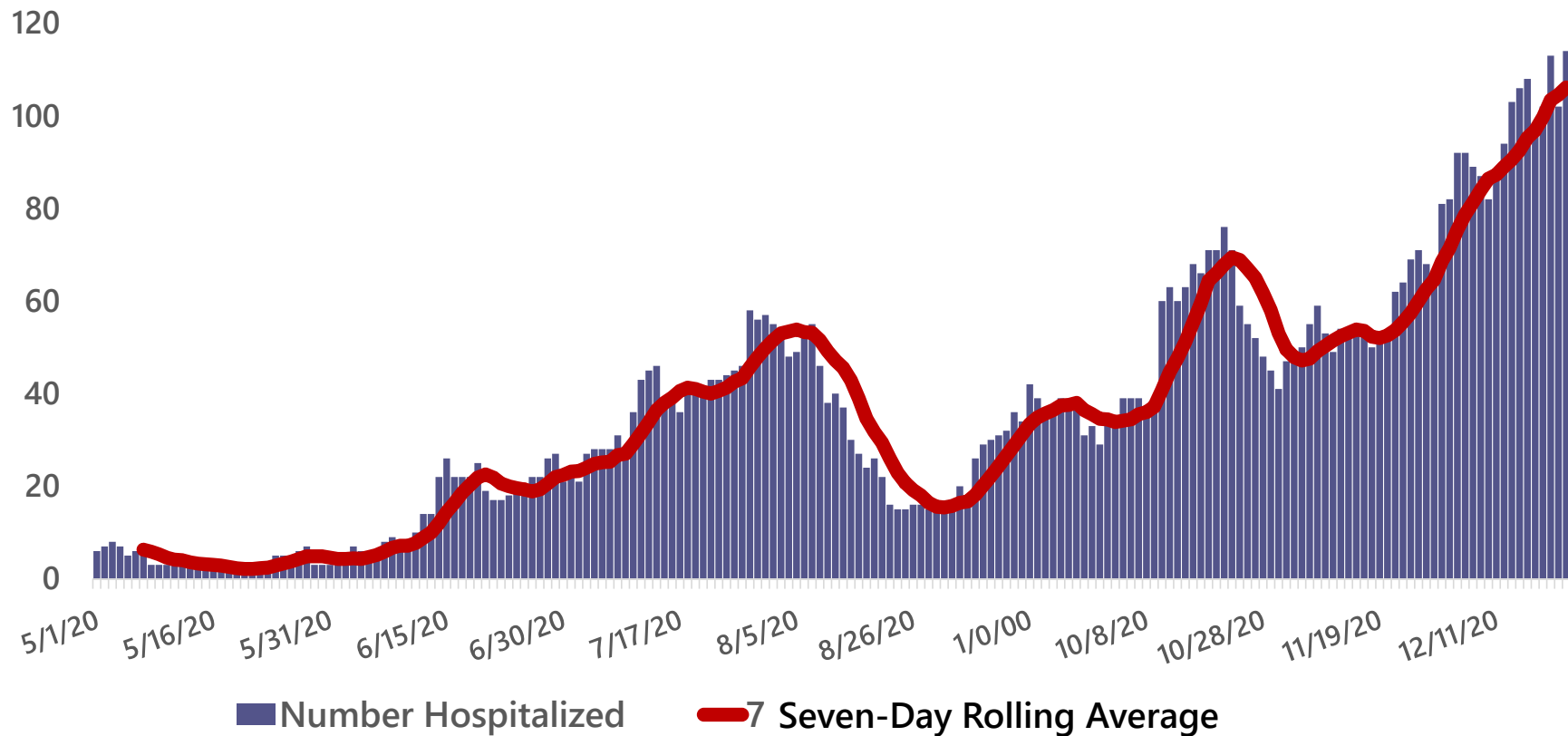
Source: NC EDSS

PERCENT OF POSITIVE TESTS, BASED ON COLLECTION DATE



Source: NC EDSS; Updated each Monday. Some tests from the most recent week may be missing, previous weeks will be updated as information is received.

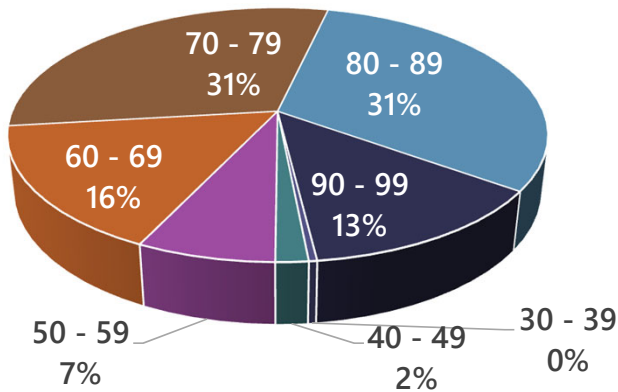
GASTON COUNTY COVID-19 HOSPITALIZATIONS



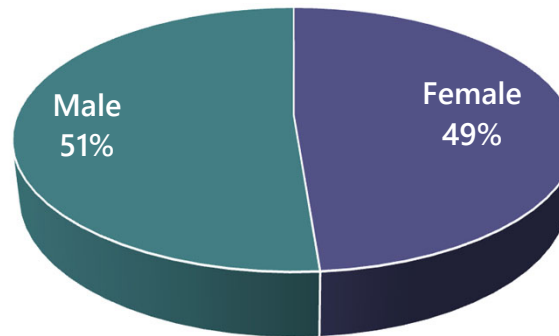
Source: Gaston County DHHS

DEATHS

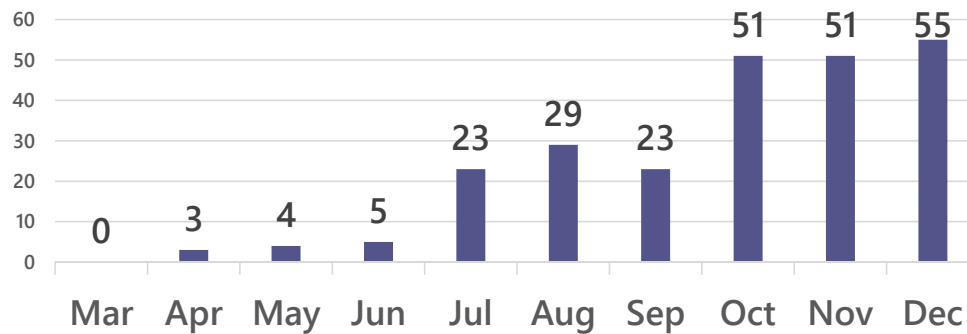
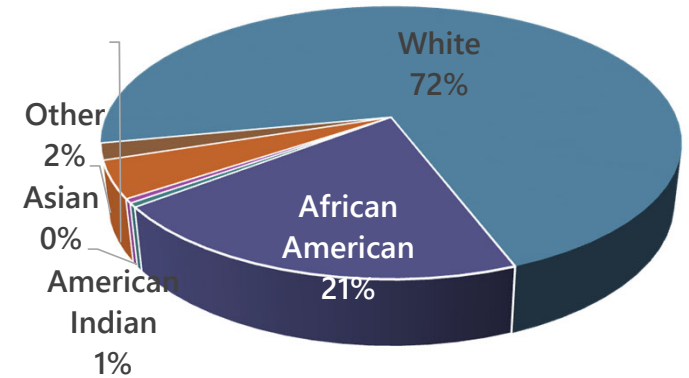
AGE



GENDER



RACE / ETHNICITY



- 244 Deaths
- Average Age is 77

Source: Gaston County DHHS, 12-28-20



COVID Vaccination Update

Vaccination Timeline

- Week of December 14 – CaroMont received initial allocations and began vaccinating front-line medical staff
- Week of December 21 – DHHS received first shipment of Moderna vaccine
- Week of December 28 – DHHS and GEMS begin jointly vaccinating medical first responders
- Week of January 4 (and beyond) – CaroMont and DHHS continue vaccination efforts, expanding to other healthcare providers, long term care facilities, and other 1A individual
- Move to 1B individuals when all 1A individuals who would like to be vaccinated have been given the chance

Those most at risk get it first.

1a
Health care workers fighting COVID-19 & Long-Term Care

Health care workers at high risk for exposure to COVID-19—doctors, nurses, and all who interact and care for patients with COVID-19, including those who clean areas used by patients, and those giving vaccines to these workers.

Long-Term Care staff and residents—people in skilled nursing facilities and in adult, family and group homes.

1b
Adults at highest risk of severe illness and those at highest risk for exposure

Adults with two or more chronic conditions that put them at risk of severe illness as defined by the CDC, including conditions like cancer, COPD, serious heart conditions, sickle cell disease and Type 2 diabetes, among others.

Adults at high risk of exposure including essential frontline workers (police, food processing, teachers, child care), health care workers, and those living in prisons, homeless shelters, migrant and fishery housing with 2+ chronic conditions.

Those working in prisons, jails and homeless shelters (no chronic conditions requirement).

2
Adults at high risk for exposure and at increased risk of severe illness

Essential frontline workers, health care workers, and those living in prisons, homeless shelters or migrant and fishery housing.

Adults 65+

Adults under 65 with one chronic condition that puts them at risk of severe illness as defined by the CDC.

3
Students and critical industry workers

College and university students.

K-12 students when there is an approved vaccine for children.

Those employed in jobs that are critical to society and at lower risk of exposure.

4
Everyone who wants a safe and effective COVID-19 vaccination



Current Phase

Steve Eaton
Public Health Director
Steve.eaton@gastongov.com
704-853-5271



GASTON COUNTY