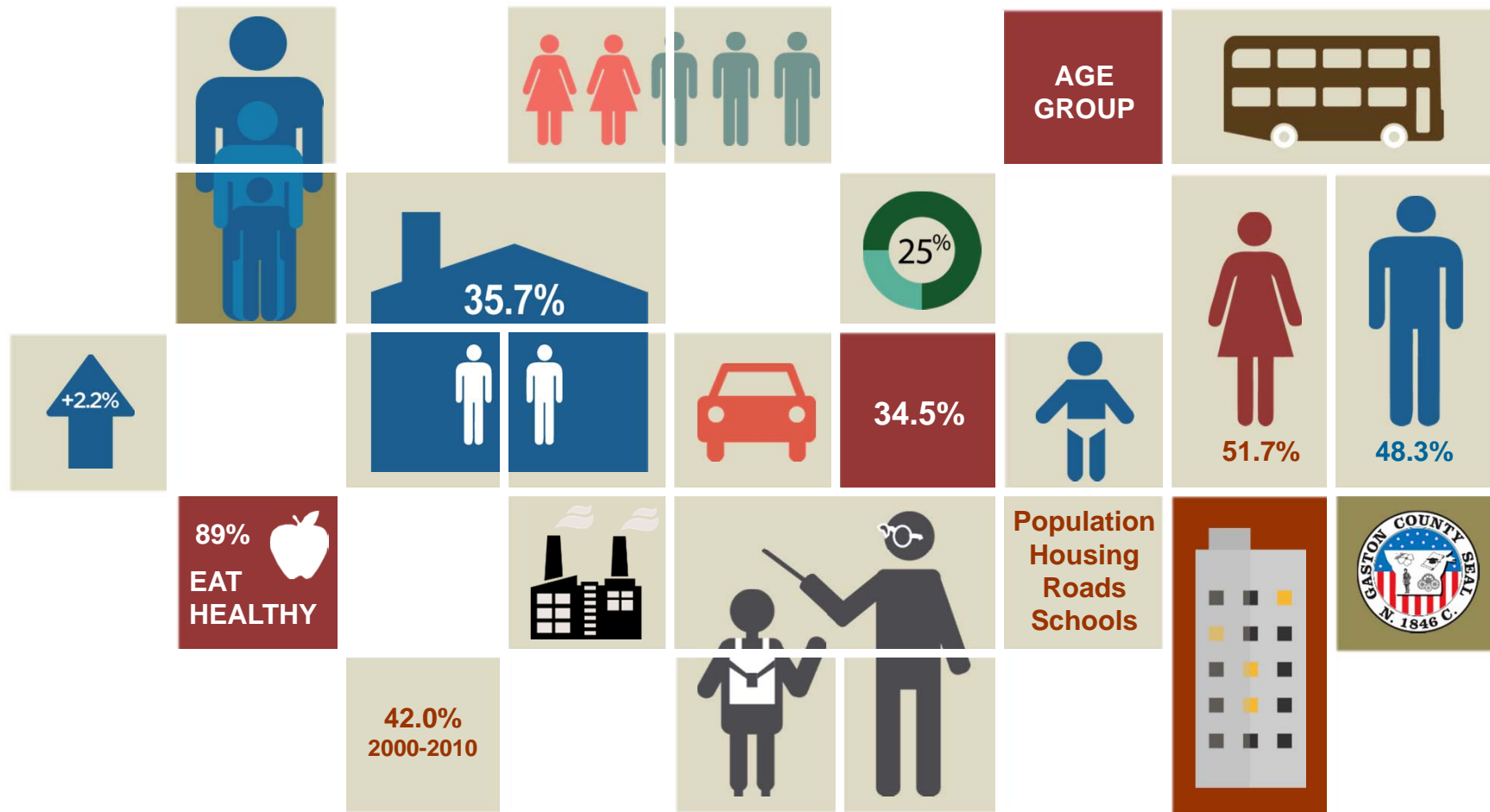


# Gaston County

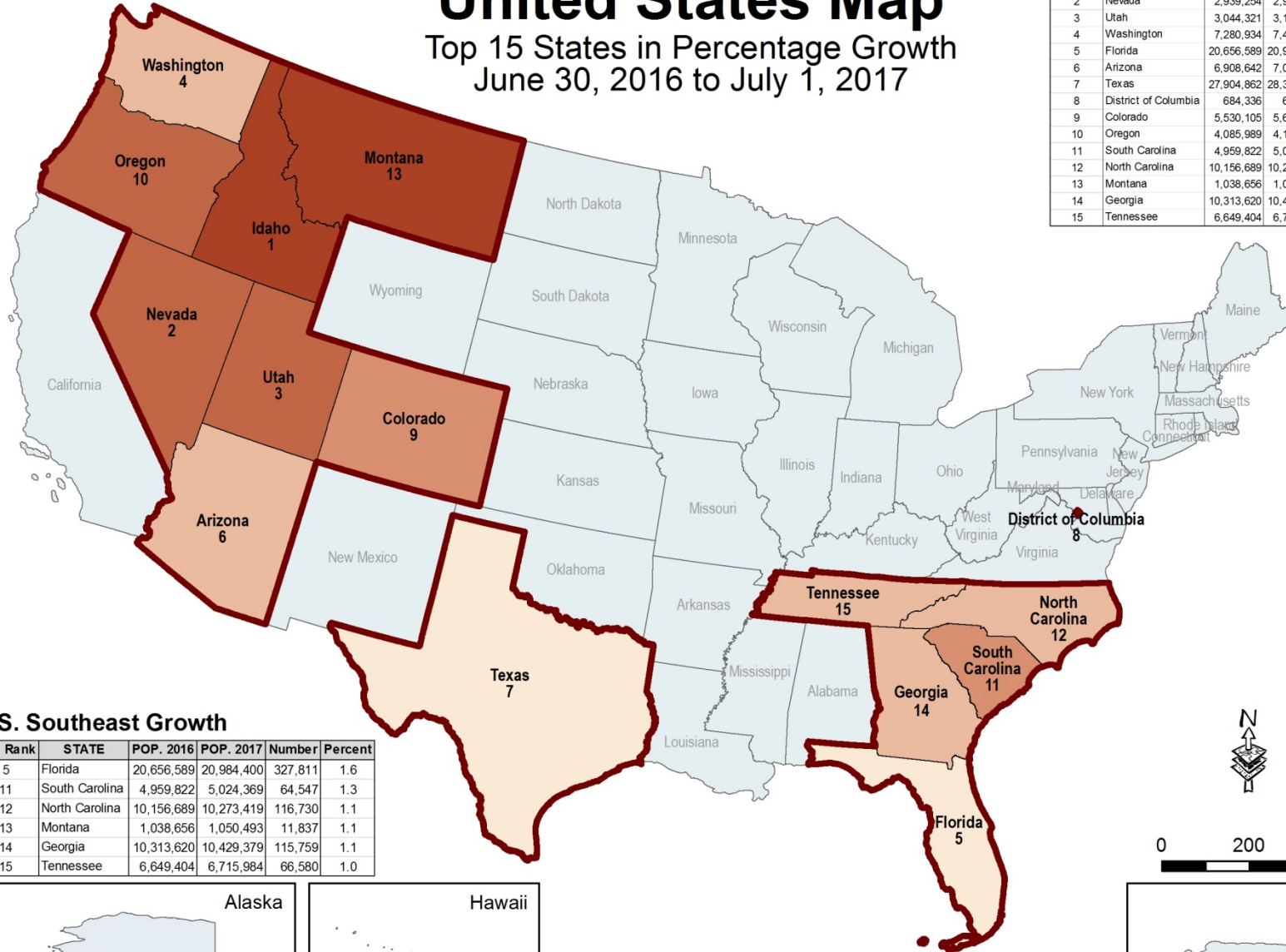
## Southeast Growth



# United States Map

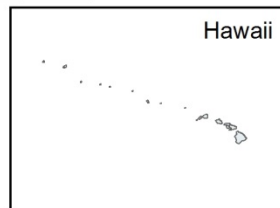
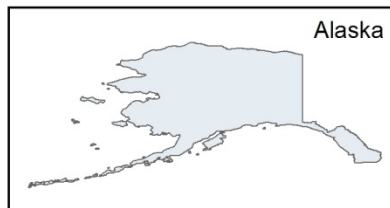
## Top 15 States in Percentage Growth June 30, 2016 to July 1, 2017

Rank	STATE	POP. 2016	POP. 2017	Number	Percent
1	Idaho	1,680,026	1,716,943	36,917	2.2
2	Nevada	2,939,254	2,998,039	58,785	2.0
3	Utah	3,044,321	3,101,833	57,512	1.9
4	Washington	7,280,934	7,405,743	124,809	1.7
5	Florida	20,656,589	20,984,400	327,811	1.6
6	Arizona	6,908,642	7,016,270	107,628	1.6
7	Texas	27,904,862	28,304,596	399,734	1.4
8	District of Columbia	684,336	693,972	9,636	1.4
9	Colorado	5,530,105	5,607,154	77,049	1.4
10	Oregon	4,085,989	4,142,776	56,787	1.4
11	South Carolina	4,959,822	5,024,369	64,547	1.3
12	North Carolina	10,156,689	10,273,419	116,730	1.1
13	Montana	1,038,656	1,050,493	11,837	1.1
14	Georgia	10,313,620	10,429,379	115,759	1.1
15	Tennessee	6,649,404	6,715,984	66,580	1.0

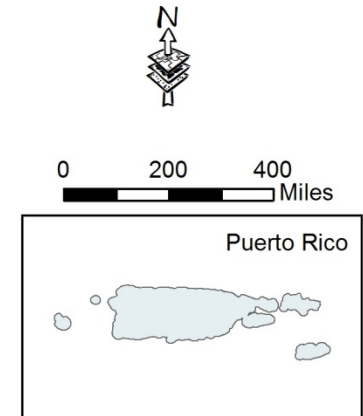


### U.S. Southeast Growth

U.S. Rank	STATE	POP. 2016	POP. 2017	Number	Percent
5	Florida	20,656,589	20,984,400	327,811	1.6
11	South Carolina	4,959,822	5,024,369	64,547	1.3
12	North Carolina	10,156,689	10,273,419	116,730	1.1
13	Montana	1,038,656	1,050,493	11,837	1.1
14	Georgia	10,313,620	10,429,379	115,759	1.1
15	Tennessee	6,649,404	6,715,984	66,580	1.0

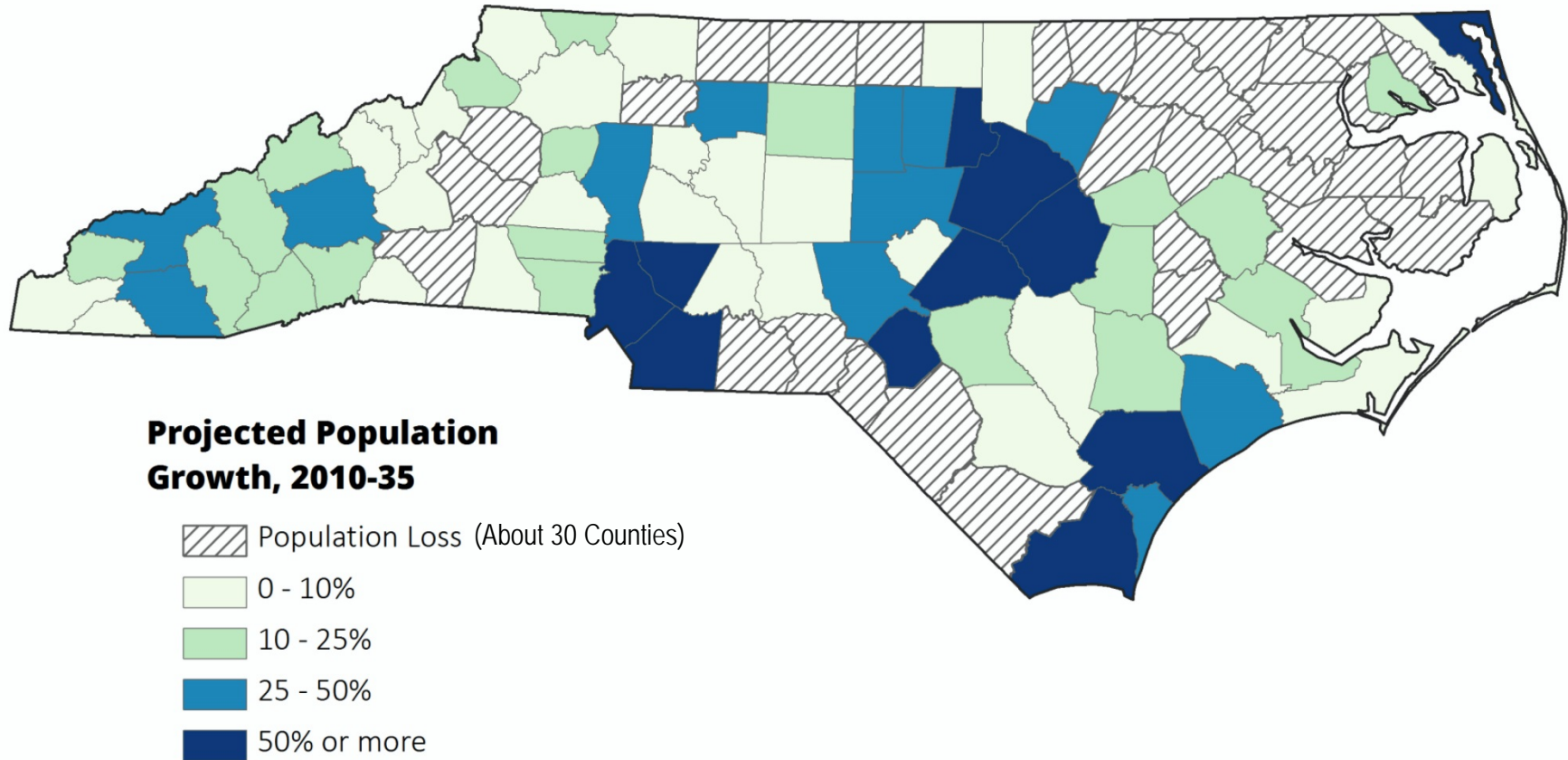


United States™  
**Census**  
Bureau

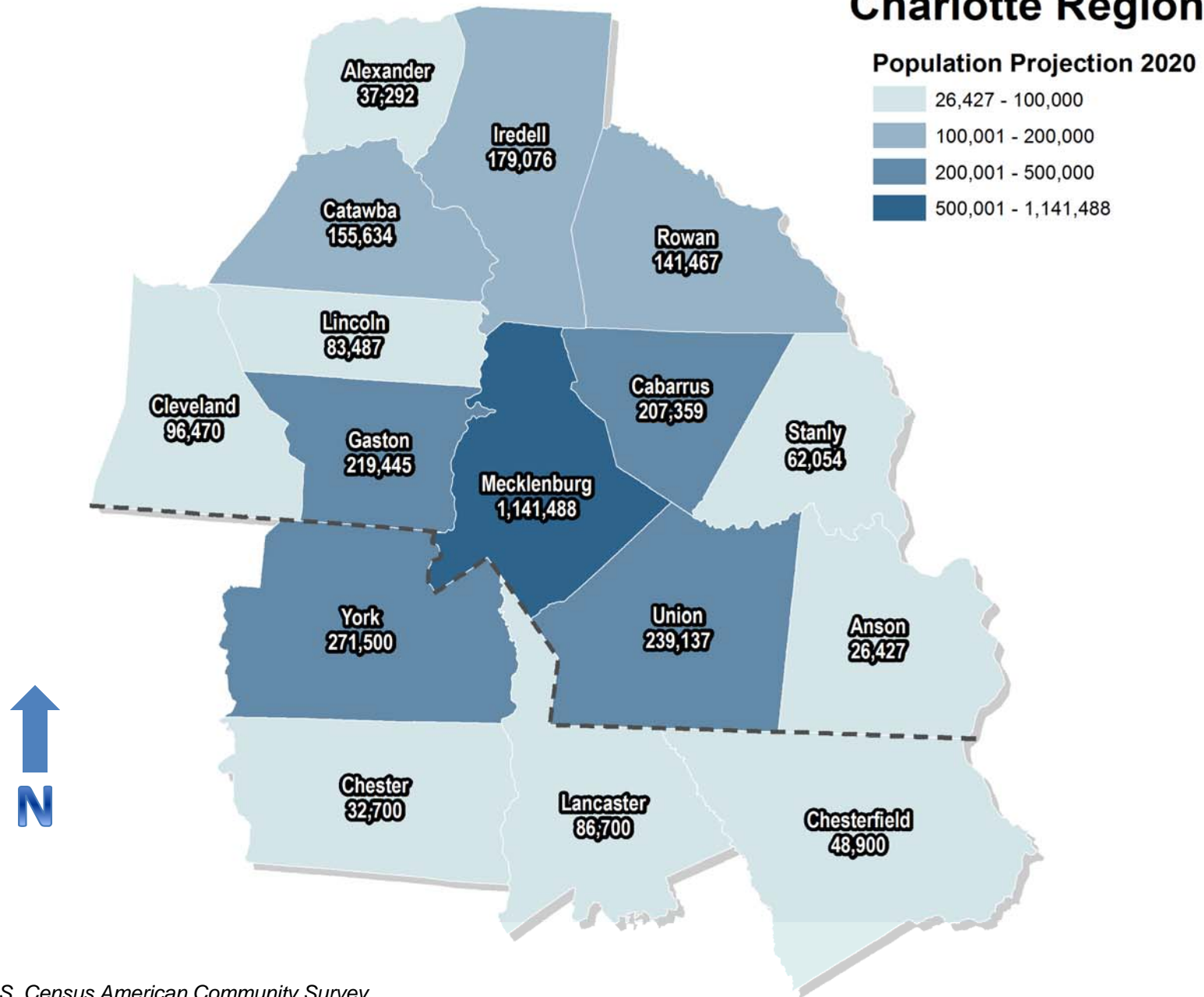


# Population growth will be uneven across North Carolina

*Projected population growth, 2010-2035*



# Charlotte Region



Source: U.S. Census American Community Survey



# 2017 TOTAL POPULATION ESTIMATES BY TOWNSHIP

TOTAL POPULATION ESTIMATE: 218,569

Cleveland County



**Gaston County  
North Carolina**

TOWNSHIP	POP. 2010	EST. POP. 2017	DIFFERENCE
CHERRYVILLE	16,500	17,269	769
CROWDERS MOUNTAIN	15,821	17,533	1,712
DALLAS	21,436	24,399	2,963
GASTONIA	85,249	87,891	2,642
RIVERBEND	26,596	27,459	863
SOUTH POINT	40,484	44,018	3,534

2017 Population Estimates  
U.S. Census Bureau - NC Office of State Budget and Management



0 2.5 5 Miles

The data will include summaries of population totals, as well as data on race, Hispanic origin and voting age for multiple geographies within the state, such as census blocks, tracts, voting districts, cities, counties and school districts.

According to Public Law 94-171, the Census Bureau must provide redistricting data to the 50 states no later than April 1 of the year following the census. As a result, the Census Bureau is delivering the data state-by-state on a flow basis in February and March. All states will receive their data by April 1, 2020.

York County, South Carolina

Lincoln County

Mecklenburg County

**CHERRYVILLE  
TOWNSHIP**

**2017 Pop. Estimate:  
17,269**

**DALLAS  
TOWNSHIP**

**2017 Pop. Estimate:  
24,399**

**RIVERBEND  
TOWNSHIP**

**2017 Pop. Estimate:  
27,459**

**CROWDERS  
MOUNTAIN  
TOWNSHIP**

**2017 Pop. Estimate:  
17,533**

**GASTONIA  
TOWNSHIP**

**2017 Pop. Estimate:  
87,891**

**SOUTH POINT  
TOWNSHIP**

**2017 Pop. Estimate:  
44,018**

Map compiled by the Gaston County Planning & Development Services. OSBM serves thousands of data items to state agencies and the public for use in budgeting, planning, research, and general information about the state. These data come from a variety of sources, including:

State agency socioeconomic annual statistics, Decennial census information collected by the US Bureau of the Census and repackaged as value-added products for North Carolina and distributed by the NC State Data Center, Official population estimates and projections for the state's counties and municipalities (with age, race, and gender for counties), State agency performance measures and other results-based data, and other socioeconomic data on NC geographic areas from the federal surveys.

Although strict accuracy standards have been employed in the compilation of this map, Gaston County does not make or imply any warranties or assume any responsibility for the information presented on this map or its use.

Created by: Planning GIS Division  
Date: January 31, 2018



Source: U.S. Census Bureau ACS and N.C. OSBM Population Estimates

# Township Population

TOWNSHIP	POP. 2010	EST. POP 2017	DIFFERENCE
CHERRYVILLE	16,500	17,269	769
CROWDERS MOUNTAIN	15,821	17,533	1,712
DALLAS	21,436	24,399	2,963
GASTONIA	85,249	87,891	2,642
RIVERBEND	26,596	27,459	863
SOUTH POINT	40,484	44,018	3,534
<b>TOTAL:</b>	<b>206,086</b>	<b>218,569</b>	<b>12,483</b>

*Source: North Carolina OSBM, Standard Population Estimates, Vintage 2016.*

# Census ACS 2016 Total Population Estimates by Census Tract

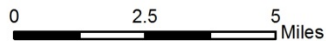
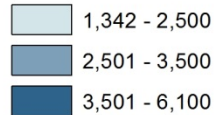
ACS 2016 Total Population Estimate in Gaston County: 216,965

The American Community Survey (ACS) is an ongoing survey by the U.S. Census Bureau. It regularly gathers information previously contained only in the long form of the decennial census, such as ancestry, educational attainment, income, language proficiency, migration, disability, employment, and housing characteristics.

These data are used by many public-sector, private-sector, and not-for-profit stakeholders to allocate funding, track shifting demographics, plan for emergencies, and learn about local

## Census Tracts

### ACS Total Population 2016



Geography	April 1, 2010		Population Estimate (as of July 1)						
	Census	Estimates Base	2010	2011	2012	2013	2014	2015	2016
Gaston County, North Carolina	206,086	206,101	206,093	206,979	208,128	209,384	210,921	213,366	216,965



Map compiled by the Gaston County Planning & Development Services. Transportation, Hydrography and other major surface features shown were automated from 2014 - 1:2,400 scale orthophotography. (NC State Plane Coordinate System NAD 83). Property Parcels automated by Gaston County Tax Department from recorded deeds and available photography.

Although strict accuracy standards have been employed in the compilation of this map, Gaston County does not make or imply any warranties or assume any responsibility for the information presented on this map or its use.

This map may not be resold or otherwise used for trade or commercial purposes without the expressed written consent of Gaston County, in accordance with North Carolina General Statute 152-10.

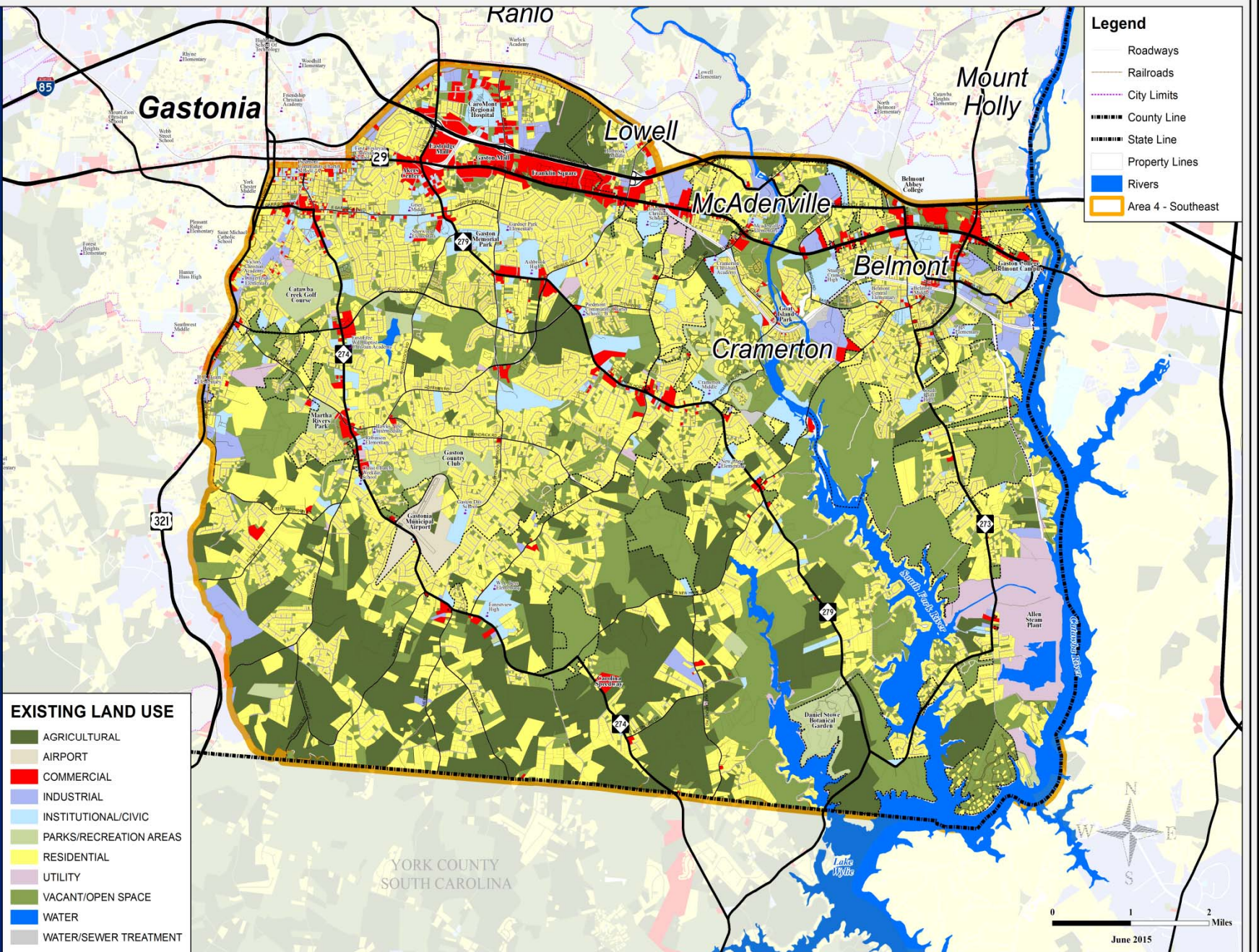
Created by: Planning GIS Division  
Date: January 5, 2018



Source: U.S. Census Bureau - American Community Survey (ACS) 2016 5-year Estimates

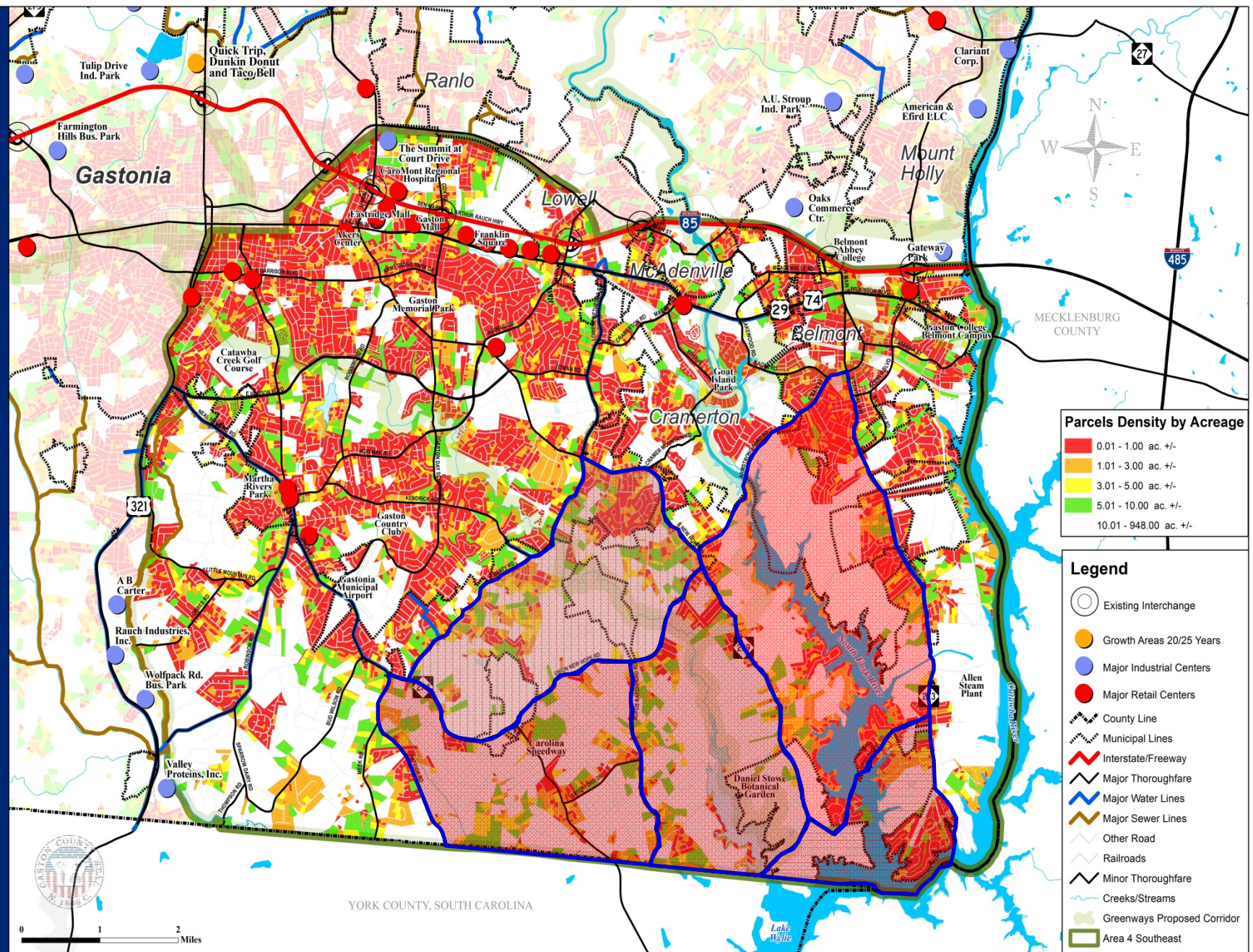


# COUNTY SOUTHEAST EXISTING LAND USE MAP





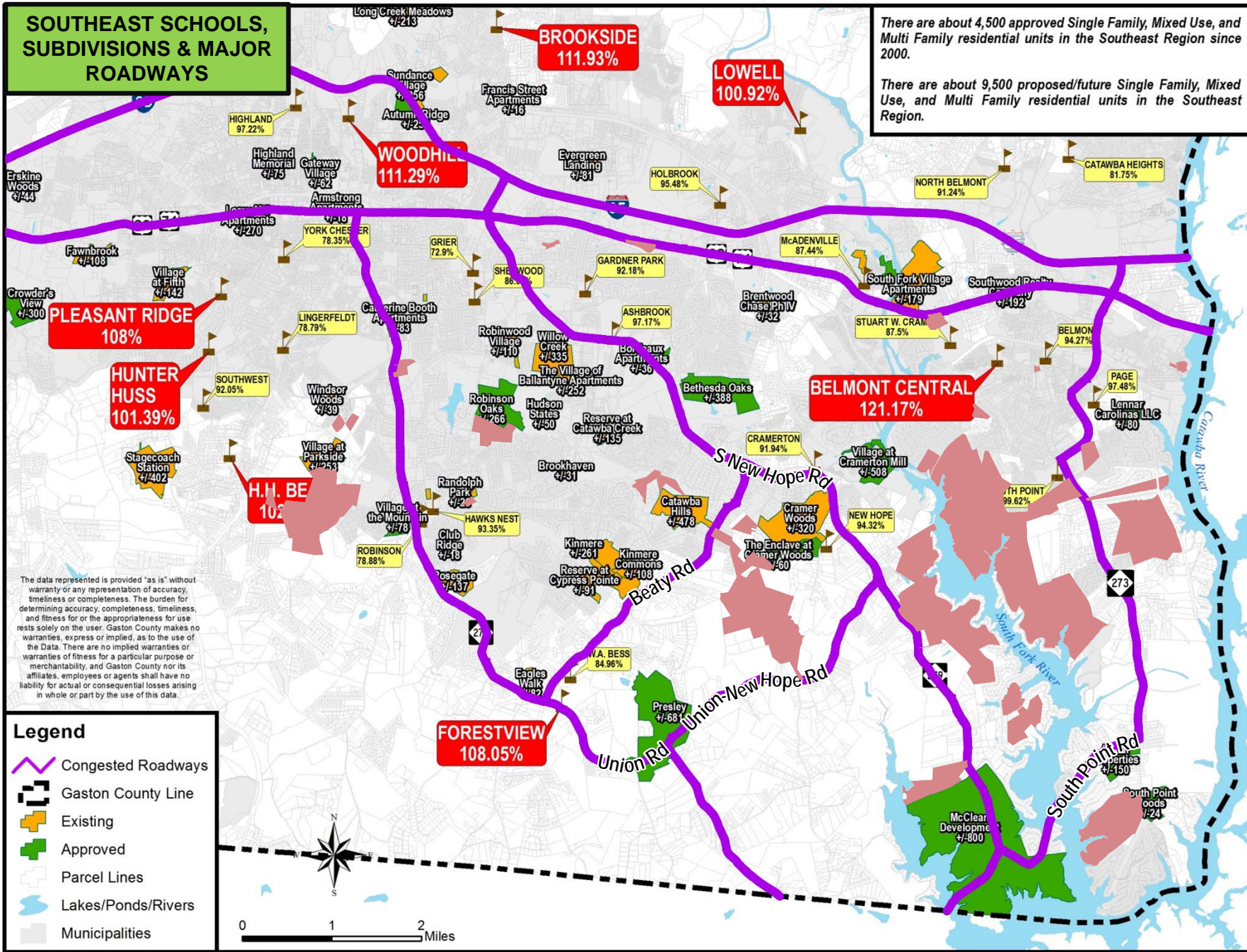
# SOUTHEAST ECONOMIC DEVELOPMENT MAP



***There are about 4,500 approved Single Family, Mixed Use, and Multi Family residential units in the Southeast Region since 2000.***

***There are about 9,500 proposed/future Single Family, Mixed Use, and Multi Family residential units in the Southeast Region.***







# Schools Instructional Capacity

## Elementary Schools Capacity

January 4, 2018

School Name	Capacity	Enrollment	Difference	Percent
Belmont Central Elementary	619	731	112	121.17%
Brookside Elementary	528	591	63	111.93%
Catawba Heights Elementary	411	336	75	81.75%
Gardner Park Elementary	665	613	52	92.18%
H.H. Beam Elementary	723	740	17	102.35%
Hawks Nest "STEAM" Academy	376	351	25	93.35%
Lingerfeldt Elementary	547	431	116	78.79%
Lowell Elementary	545	550	5	100.92%
McAdenville Elementary	215	188	27	87.44%
New Hope Elementary	528	498	30	94.32%
North Belmont Elementary	411	375	36	91.24%
Page Elementary	357	348	9	97.45%
Pleasant Ridge Elementary	800	864	64	108%
Robinson Elementary	535	422	113	78.88%
Sherwood Elementary	723	626	97	86.58%
W.A. Bess Elementary	665	565	100	84.96%
Woodhill Elementary	567	631	64	111.29%

## Middle Schools Capacity

January 4, 2018

School Name	Capacity	Enrollment	Difference	Percent
Belmont Middle	751	708	43	94.27%
Cramerton Middle	906	833	73	91.94%
Grier Middle	930	678	252	72.90%
Holbrook Middle	774	739	35	95.47%
Southwest Middle	906	834	72	92.05%
York Chester Middle	508	398	110	78.35%

## High Schools Capacity

January 4, 2018

School Name	Capacity	Enrollment	Difference	Percent
Ashbrook High	1,459	1,342	117	97.17%
Forestview High	1,105	1,194	89	108.05%
Highland School of Technology	575	559	16	97.21%
Hunter Huss High	1,193	1,109	84	101.39%
South Point High	1,061	1,032	29	99.60%
Stuart W. Cramer High	1,326	1,026	300	87.50%

Student 2017-2018 enrollment data obtained from the N.C. Public Schools/State Board of Education Statistics Department.  
Capacity data obtained from various sources and years. Gaston County Schools will have the latest Capacity data.



**Thank you!**