

GENERAL REZONING REQUEST

Applicant: Justin Fulbright

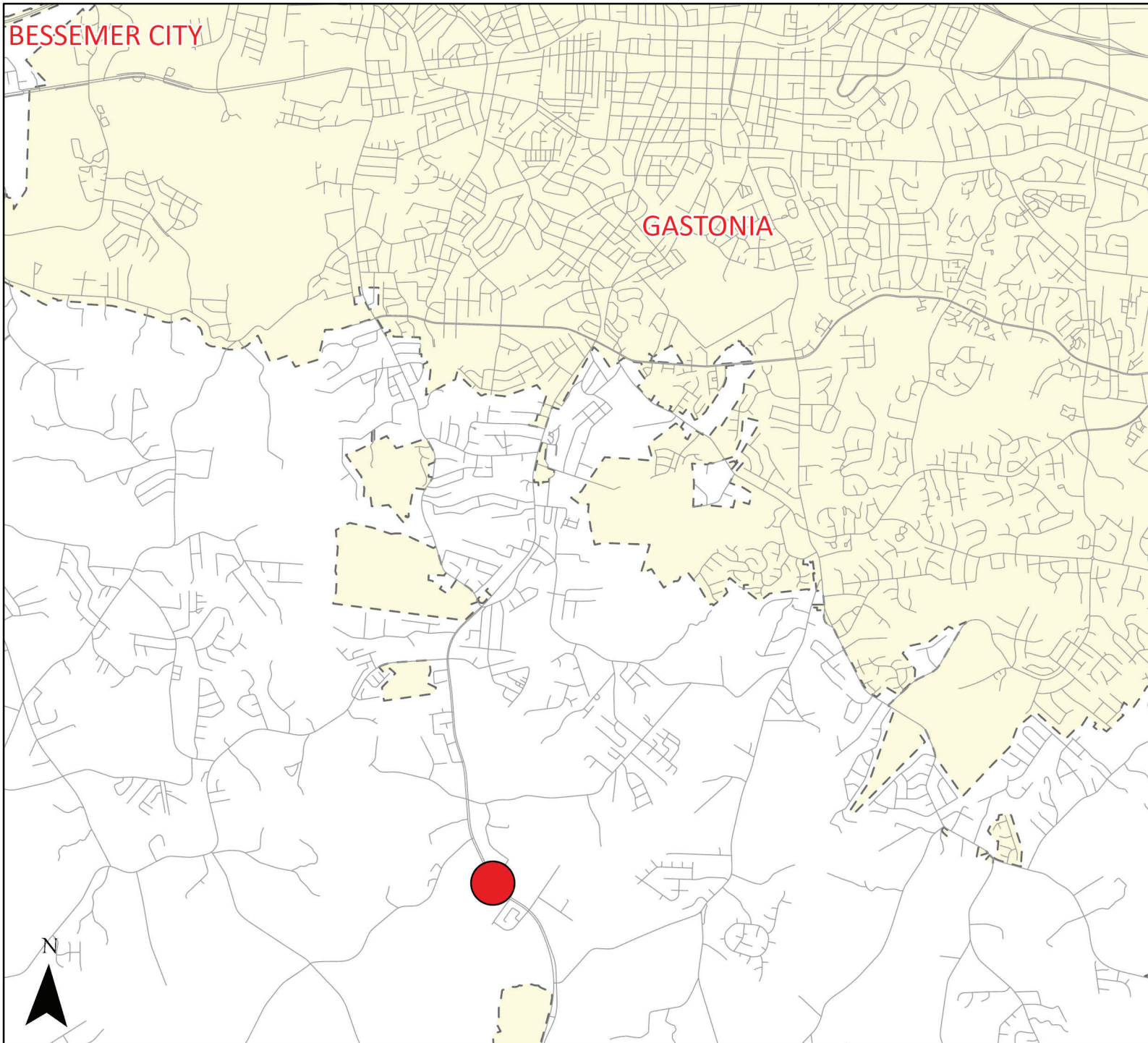
Owner(s): The TV Shop / Danellia Mann

Parcel: 308406

Location: 5001 York Hwy

Request: I-2 & I-3 / US & CH zoning to
C-3 / US & CH zoning district





VICINITY MAP
REZ-22-12-30-00136
5001 York Hwy.
Gastonia

Legend

- Roads
- Municipalities
- Subject Property

Although strict standards have been employed in the compilation of this map, Gaston County does not make or imply any warranties or assume any responsibility for the information presented on this map or its use.

This map may not be resold or otherwise used for trade of commercial purposes without the expressed written consent of Gaston County, in accordance with North Carolina General Statute 132-10.



ORTHOPHOTO MAP
REZ-22-12-30-00136

LEGEND

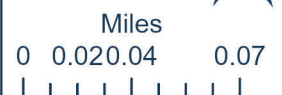
- Subject Parcels
- Property Parcels

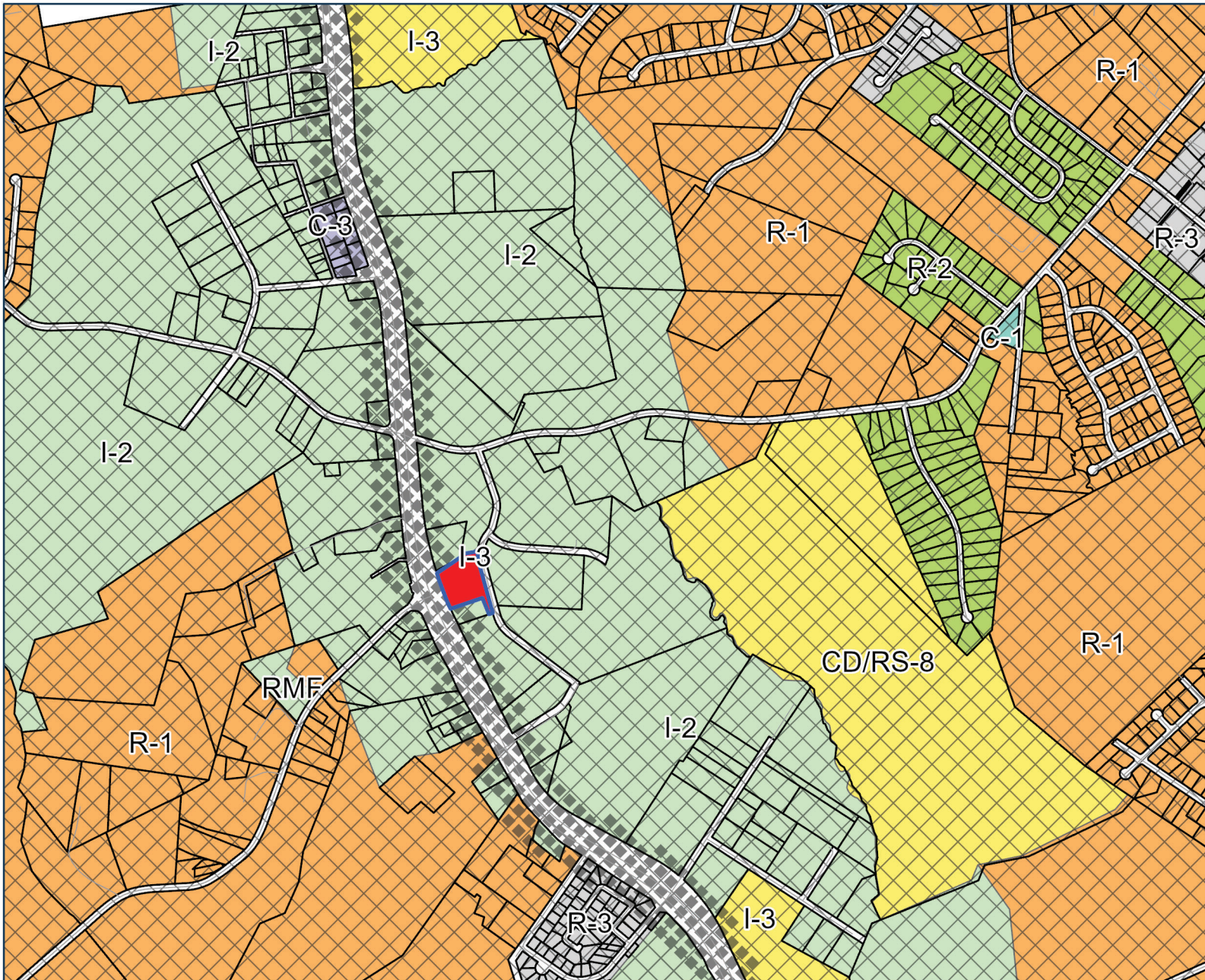
This map is intended for use by the Gaston County Board of Commissioners, in the review of rezoning requests.

Property parcels, zoning, transportation, and other map information were compiled from one or more data layers. The data is periodically updated, however, all data layers may not be displayed. Street names are subject to change.

Gaston County does not make or imply any warranties or assume any responsibility for the information presented on this map. This map was prepared by the Building and Development Services Department.

This map is for zoning purposes only - Not to be used for conveyance.





ZONING REVIEW MAP REZ-22-12-30-00136

Legend

Gaston County Overlays TYPE

- CH OVERLAY
- US OVERLAY

Gaston County UDO

ZONE TYPE

- C-1
- C-3
- CD/RS-8
- I-2
- I-3
- R-1
- R-2
- R-3
- RMF
- Parcels
- Roads
- Gaston County Line
- Subject Parcel



Miles

0 0.07 0.15 0.3

A horizontal scale bar with markings for 0, 0.07, 0.15, and 0.3 miles.

This map is intended for use by the Gaston County Board of Commissioners, in the review of rezoning requests.

Property parcels, zoning, transportation, and other map information were compiled from one or more data layers. The data is periodically updated, however, all data layers may not be displayed. Street names are subject to change.

Gaston County does not make or imply any warranties or assume any responsibility for the information presented on this map. This map was prepared by the Building and Development Services Department. This map is for zoning purposes only - Not to be used for conveyance.



REZ-22-12-30-00136