



# Gaston County CTP Board of County Commissioners Work Meeting

April 14, 2026

**RS&H**

# Presentation Outline

- CTP Background
- CTP Process
- Stakeholder and Public Engagement
- CTP Recommendations

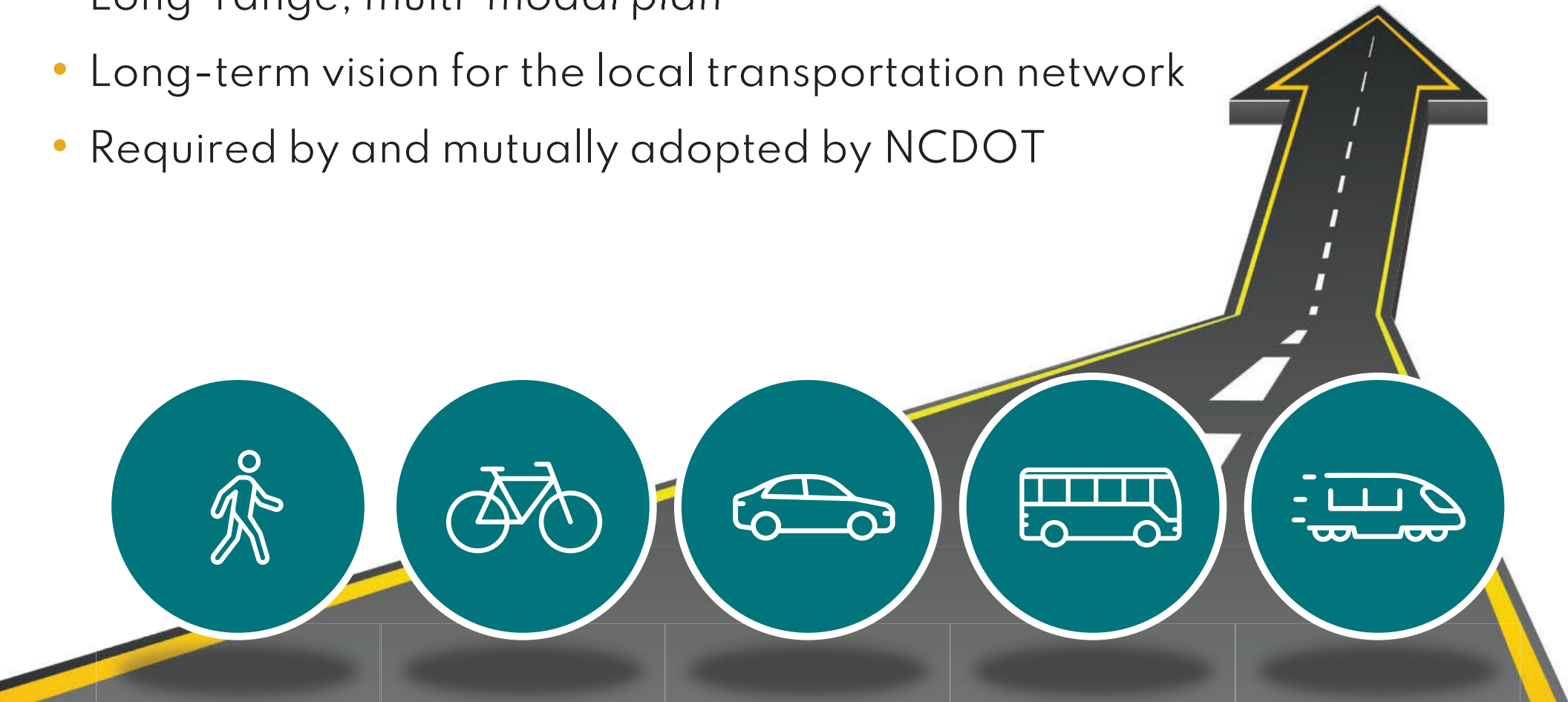




# CTP Background

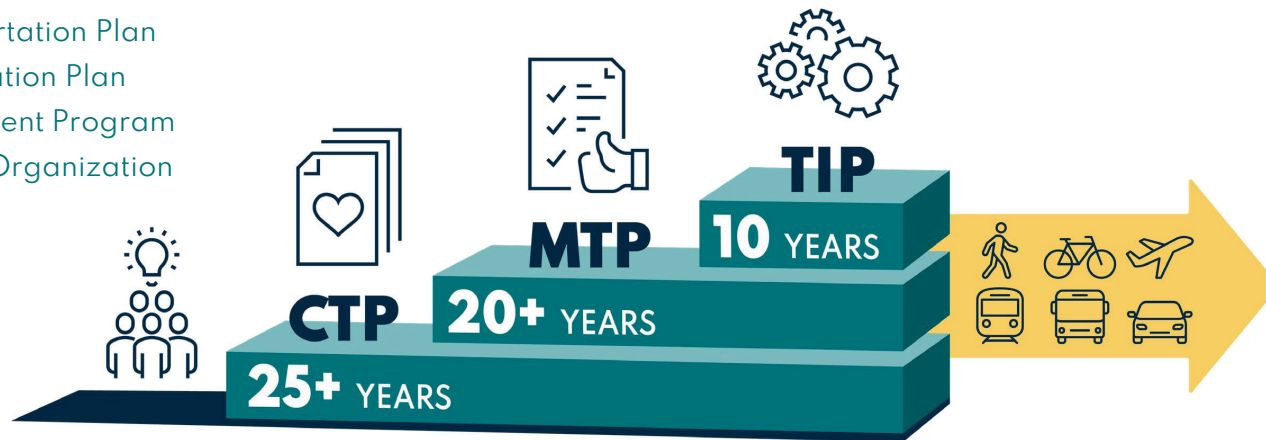
## What is a CTP?

- Long-range, multi-modal plan
- Long-term vision for the local transportation network
- Required by and mutually adopted by NCDOT



# What is a CTP?

CTP – Comprehensive Transportation Plan  
MTP – Metropolitan Transportation Plan  
TIP – Transportation Improvement Program  
MPO – Metropolitan Planning Organization



## CTP

- Non-fiscally constrained
- Required by NCDOT
- Starting point for identifying and documenting transportation needs
- Framework for selecting future transportation projects
- Minor updates as needed; full update ~every 10 years by county, MPO, or NCDOT

## MTP

- Required by FHWA
- Fiscally constrained
- Identifies transportation projects prioritized for funding over next 20+ years
- Updated every 4 years by MPO

## TIP

- MPO's short-term programming document (includes schedule and funding source)
- Updated and approved by MPO every 2 years
- Incorporated into the state TIP



# Why Develop a CTP?

- Identify existing and future transportation needs
- First step in the NCDOT project delivery process
- Projects must be reflected in the CTP before County can submit them for future funding available through NCDOT and GCLMPO
- NCDOT refers to CTP when implementing its Complete Streets Policy

## NCDOT PROJECT DELIVERY PROCESS

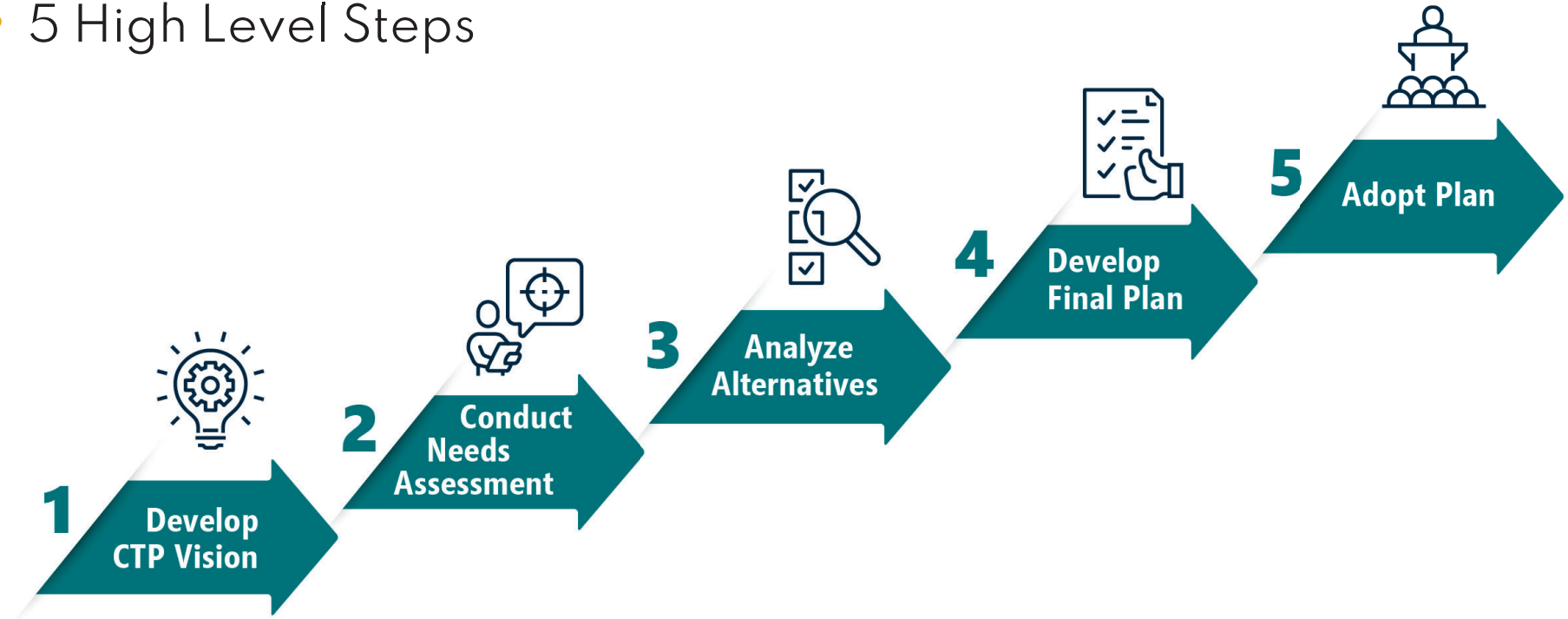




# CTP Process

# CTP Process

- 5 High Level Steps



# Step 1 – Develop CTP Vision

- Vision Statement

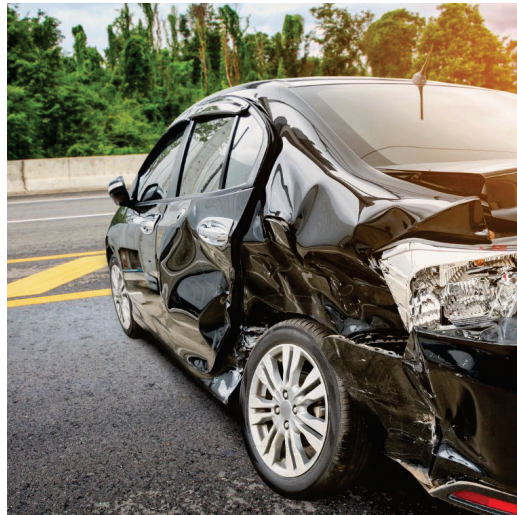
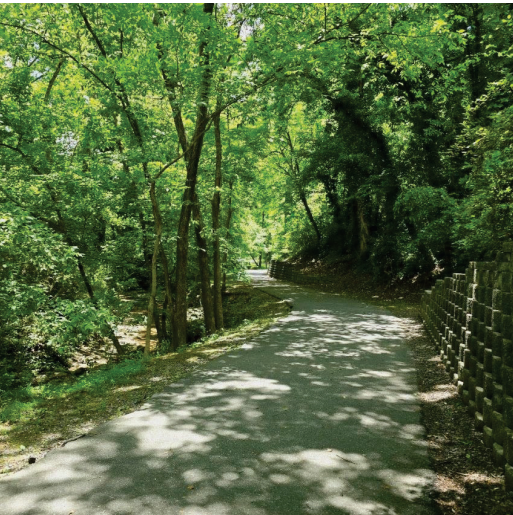
“Gaston County envisions a multimodal transportation network that seamlessly moves people and goods, connecting users to economic and social opportunities while ensuring safety, reliability, accessibility, and environmental preservation.”

- County Intentionally Aligned with GCLMPO 2055 MTP Goals and Objectives
  - Consistency between plans and counties
  - Minimizes confusion for public
  - Supports federally-required planning factors



## Step 2 - Conduct Needs Assessment

- Identified Needs and Deficiencies by Mode
- Created Needs List by Mode





## Step 3 – Analyze Alternatives

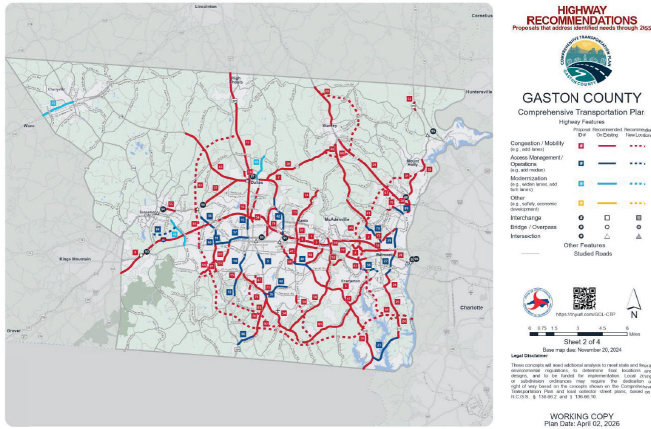
- Developed and Evaluated Solutions to Meet Identified Needs
- Conducted Environmental Screening to Identify Potential Environmental Impacts
- Selected Preferred Alternative for Inclusion in Plan

Variable	Alt 1	Alt 2
Safety		
Traffic Operations		
Natural Environment Impacts		
Human Environment Impacts		
Alignment with Vision		
Stakeholder Input		

Poor   Fair   Good   Better   Best

# Step 4 – Developed Final Plan

- Main Document
- Appendix
- Maps
- Project Recommendations List
- Project Sheets



## Gaston County Highway Recommendations

- I-85, I-5719A:**  
From US 321 to NC 7 | 6.19 miles  
Widen to eight lanes.
- I-85, I-5719B:**  
From NC 7 to NC 273 | 3.63 miles  
Widen to eight lanes.
- US 29/74, U-6043:**  
From Cox Rd (SR 2200) to 400 ft E of Lineberger Rd | 1.22 miles  
Widen the eastbound travel lanes on US 29/74 from east of Cox Rd (SR 2200)/Armstrong Park Rd to 400 feet east of Lineberger Rd from two to three lanes and add a sidewalk on the south side.
- US 29/74, U-6146:**  
From Market St to Alberta Ave (SR 2015) | 1.23 miles  
Widen to six lanes, replace Bridge 350082 over the South Fork of the Catawba River, and add a multiuse path on the north side and a sidewalk on the south side.
- NC 274, U-5961:**  
From Ocoala St to Niblick Dr | 1.0 miles  
Redesign to a four-lane boulevard with sidewalk and multiuse path.
- NC 279, U-5821:**  
From Titman Rd (SR 2478) to Union New Hope Rd (SR 2435) | 3.78 miles  
Widen to a four-lane divided facility with multiuse paths.
- NC 279, U-2523B:**  
From Robinson Clemmer Rd (SR 2275) to N Gaston St (SR 2278) | 1.92 miles  
Widen to multi-lanes with sidewalks and improve the intersection of NC 279 and NC 275.

Highway Class: ■ Congestion ■ Access Management ■ Modernization ■ Other (Safety, etc.) ● Bridge/Intersection

Gaston County CTP

### I-85

From US 321 to NC 7  
Local ID: I-5719A  
Purpose: Congestion  
Improvement: Widening

**Identified Need**  
I-85 is projected to be overcapacity by 2055. It is the main east-west corridor in Gaston County and is vital to moving people and goods between Alabama and Virginia. Improvements are needed to relieve congestion and accommodate projected traffic and truck traffic volumes.

**Recommendation**  
Widen to eight lanes.

**Proposed At A Glance**

Highway Class	Congestion & Mobility	2023 Base Year		2055 Future Year	
		Existing	Without Proposal	Without Proposal	With Proposal
Facility Type	Freeway	Freeway	Freeway	Freeway	Freeway
Typical Section	08 B	6	6	8	8
Section Options	-	95500-139000	56200-162100	73900-88600	
Volume (vpd)		77400-82200	77400-82200	125800	
Length (miles)	6.20				
Existing ROW (feet)	130-145				
Safety Risk Score	89				

**Capacity Data:**

Facility Type	Year
Facility will be Approaching Capacity (>80%)	2023
Facility will be Over Capacity (>=100%)	2023

Project Sheets 04/02/2026





## Step 5 – Adopt Plan

- GCLMPO - May
- NCDOT - After County adopts Land Use Plan





# Stakeholder and Public Engagement

# Project Website

## Welcome to the Gaston Comprehensive Transportation Plan!

The Comprehensive Transportation Plan (CTP) is a long-term vision for multimodal transportation in Gaston County that provides the foundation for what will become the transportation priorities over the next 25+ years. Gaston County is currently in the process of updating its CTP, which includes reviewing and analyzing the transportation network using the most recent data available, to ensure the improvements included in the plan represent the vision and goals of the County and its communities.

The update process involves extensive community engagement to gather input from residents and stakeholders. The plan aims to address current transportation challenges while anticipating future growth and development. Ultimately, the CTP will guide investments in infrastructure to enhance connectivity, safety, and sustainability across the region.



## Why the CTP is important to you?

A Comprehensive Transportation Plan is crucial because it contains project recommendations that aim to improve many aspects of the county, such as:

<p><b>Improve Mobility</b></p> <p>It ensures that people and goods can move efficiently and safely, reducing congestion and travel times.</p>	<p><b>Economic Growth</b></p> <p>By enhancing connectivity, it supports local business and attracts new investments, boosting the economy.</p>	<p><b>Environmental Benefits</b></p> <p>A well-planned transportation system can reduce emissions and provide sustainable modes of transport like cycling and public transit.</p>	<p><b>Quality of Life</b></p> <p>It improves access to essential services, such as healthcare and education, and enhances overall community well-being.</p>	<p><b>Safety</b></p> <p>It addresses traffic safety issues, reducing accidents and fatalities.</p>
---	--	---	---	--

- What is the Comprehensive Transportation Plan (CTP)?
- Who develops the CTP?
- What modes of transportation are included in the CTP?
- How is the CTP used in Planning?
- How often is the CTP updated?
- What information is shown in the CTP for each mode?
- How does the CTP Impact local development?
- How are changes made to the CTP?
- What are the benefits of a CTP?
- Where can I find more information about my community's CTP?

## Share Your Thoughts!

The second and final round of public input is NOW CLOSED.

For any questions or comments about the Gaston Comprehensive Transportation Plan (CTP), please contact [gastoncto@gastongov.com](mailto:gastoncto@gastongov.com). You may also click the button below.

[Community Feedback](#)

## Stay Informed

Want to stay up-to-date on the progress of the CTP? Click the button below to sign up for email updates!

[Public Survey](#)

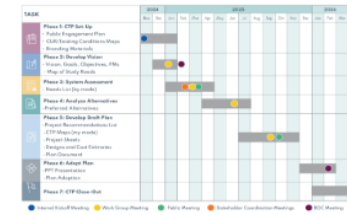
The Gaston CTP Public Survey is now closed and no longer accepting responses. Thank you to everyone who participated and shared feedback for the plan.

## Timeline

- Phase 1 | CTP Set-Up**  
December 2021 through January 2022
- Phase 2 | Develop Vision**  
January and February 2022
- Phase 3 | System Assessment**  
February through April 2022
- Phase 4 | Analyze Alternatives**  
April through December 2022
- Phase 5 | Develop Draft Plan**  
December 2022 through January 2023
- Phase 6 | Adopt Plan**  
January 2023 through March 2023
- Phase 7 | CTP Clean-Out**  
March 2023

[See link](#)

## Project Timeline



## Gaston Comprehensive Transportation Plan

LEARN about the CTP, PARTICIPATE in upcoming public meetings, and PROVIDE input to help shape the plan

<https://engagegaston.com/gaston-CTP>



# Stakeholder Engagement

- 30+ Member Stakeholder Committee
  - Four (4) meetings
  - Local government representation
  - Public Health, Emergency Management, Schools, Economic development
- Stakeholder Interviews
  - Go Gastonia
  - Bike Ped Advisory Committee
  - Parks and Recreation



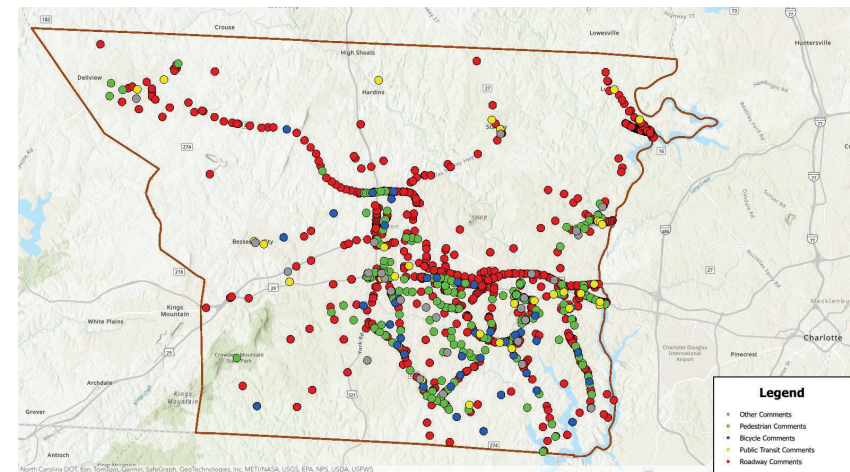
# Public Engagement

- Round 1
  - Focused on identifying transportation needs, desires, and concerns
  - Public Engagement Survey
  - Get to Know Gaston Event
- Round 2
  - Feedback on draft recommendations
  - Public Engagement Survey
  - In-Person Joint Meeting with Envision Gaston 2050 Comprehensive Plan



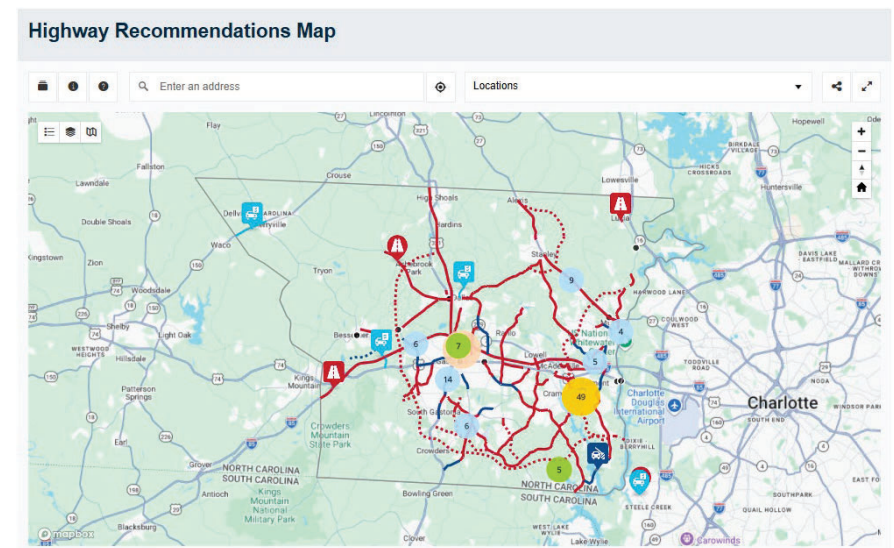
# Round 1

- 436 survey responses from Gaston County residents / employees
- Interactive maps online and at in-person event
  - Allowed users to place markers where they had transportation concerns
- Takeaways
  - Strong support for road and intersection improvements
  - Desire for more local and regional transit, including passenger rail
  - Need for more sidewalks and off-road bike facilities



## Round 2

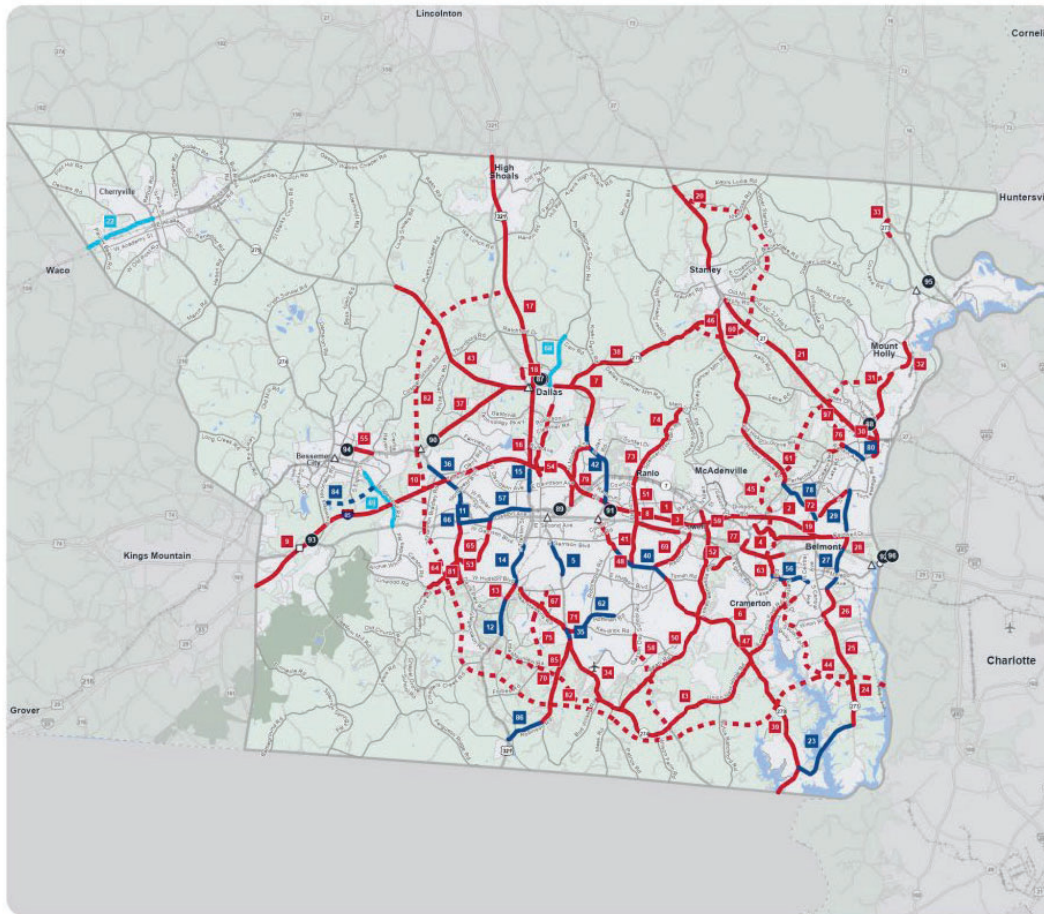
- 1,465 comments and votes
- Interactive maps online and at in-person event
  - Allowed users to comment and vote on the draft recommendations
- Key Takeaways
  - General support for most projects
  - Desire for congestion relief
  - Strong support for bike/ped safety





# CTP Recommendations

# Highway Recommendations Map



## HIGHWAY RECOMMENDATIONS

Proposals that address identified needs through 2055



### GASTON COUNTY

Comprehensive Transportation Plan

#### Highway Features

	Proposed ID #	Recommended On Existing	Recommended New Location
<b>Congestion / Mobility</b> (e.g., add lanes)	1	—	---
<b>Access Management / Operations</b> (e.g., add median)	2	—	---
<b>Modernization</b> (e.g., widen lanes, add turn lanes)	3	—	---
<b>Other</b> (e.g., safety, economic development)	4	—	---
<b>Interchange</b>	○	□	■
<b>Bridge / Overpass</b>	○	○	○
<b>Intersection</b>	○	△	△

#### Other Features



<https://tinyurl.com/GCL-CTP>



Sheet 2 of 4

Base map date: November 20, 2024

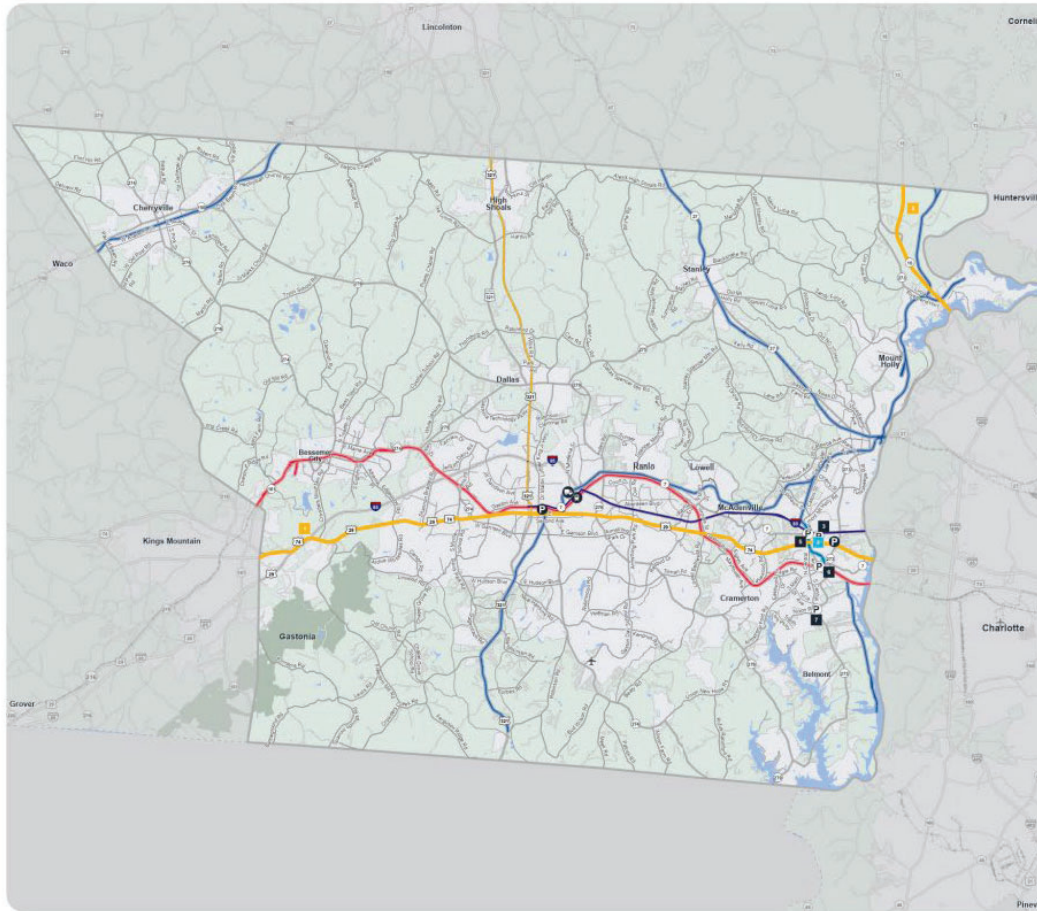
#### Legal Disclaimer

These concepts will need additional analysis to meet state and federal environmental regulations, to determine final locations and designs, and to be funded for implementation. Local zoning or subdivision ordinances may require the dedication of right of way based on the concepts shown on the Comprehensive Transportation Plan and local collector street plans, based on N.C.G.S. § 136-66.2 and § 136-66.10.

WORKING COPY  
Plan Date: April 02, 2026



# Public Transportation and Rail Recommendations Map



## PUBLIC TRANSPORTATION AND RAIL RECOMMENDATIONS

Proposals that address identified needs through 2055



### GASTON COUNTY

#### Comprehensive Transportation Plan

##### Public Transportation and Rail Features

	Proposal ID #	Existing	Recommended New Location
Urban Fixed Bus Corridors	1	2	3
Regional Bus Corridors	4	5	6
Rural Fixed Bus Corridors	7	8	9
Fixed Guideway	10	11	12
Amtrak / Freight Route	13	14	15
Current Railroad	16	17	18
Transit Facility	19	20	21
Park and Ride Lot	22	23	24
Amtrak Station	25	26	27
Intermodal Terminal	28	29	30

Studied Roads  
Denotes Highway Incidental ★

Note: Microtransit operates within the City of Gastonia



<https://tinyurl.com/GCL-CTP>



Sheet 3 of 4

Base map date: November 20, 2024

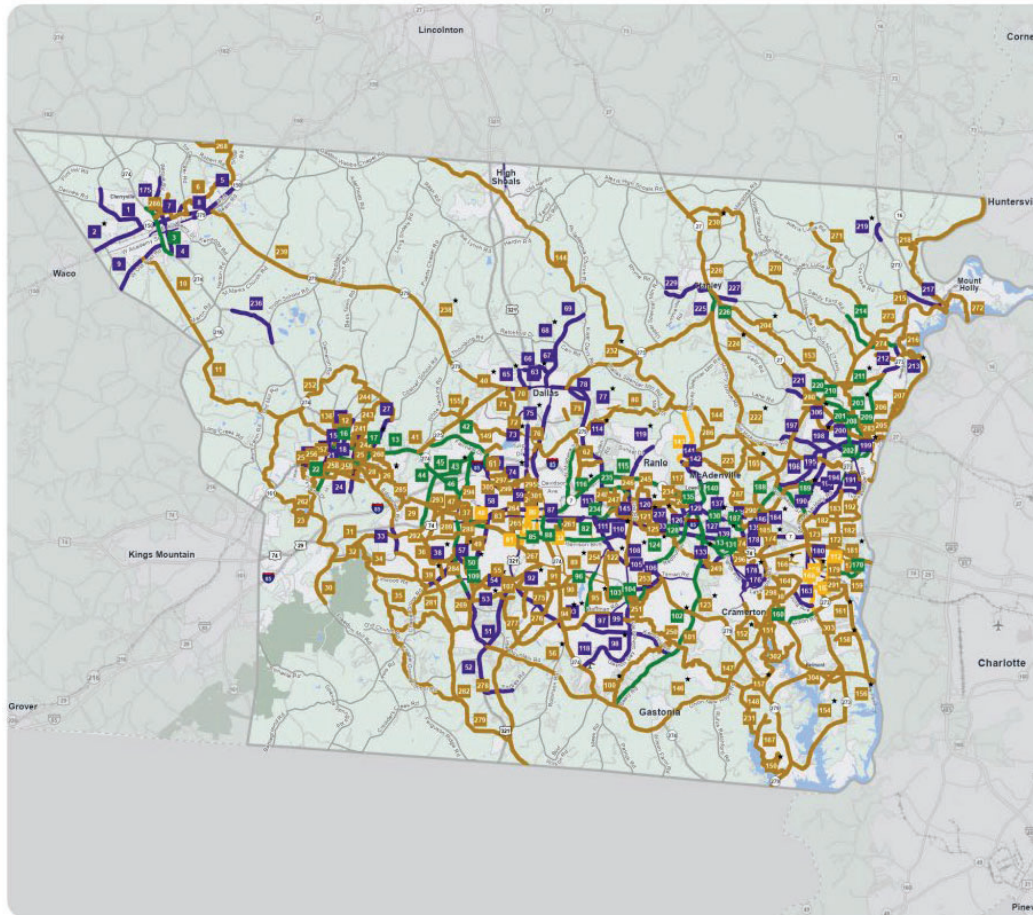
##### Legal Disclaimer

These concepts will need additional analysis to meet state and federal environmental regulations, to determine final locations and designs, and to be funded for implementation. Local zoning or subdivision ordinances may require the dedication of right of way based on the concepts shown on the Comprehensive Transportation Plan and local collector street plans, based on N.C.G.S. § 136-66.2 and § 136-66.10.

WORKING COPY  
Plan Date: April 02, 2026



# Bicycle and Pedestrian Recommendations Map



## BICYCLE / PEDESTRIAN RECOMMENDATIONS

Proposals that address identified needs through 2055



### GASTON COUNTY

Comprehensive Transportation Plan  
Bicycle and Pedestrian Features

	Proposal ID#	Existing	Recommended New Location
Bicycle	1	—	—
Pedestrian	2	—	—
Bicycle and Pedestrian	3	—	—
Multiuse Path	4	—	—
Bicycle and Pedestrian Bridge	5	○	○
Denotes Highway Incidental		★	

Other Features  
Studied Roads



<https://tinyurl.com/GCL-CTP>



Sheet 4 of 4

Base map date: November 20, 2024

#### Legal Disclaimer

These concepts will need additional analysis to meet state and federal environmental regulations, to determine final locations and designs, and to be funded for implementation. Local zoning or subdivision ordinances may require the dedication of right of way based on the concepts shown on the Comprehensive Transportation Plan and local collector street plans, based on N.C.G.S. § 136-66.2 and § 136-66.10.

WORKING COPY  
Plan Date: April 02, 2026



# Project Recommendations List

## Gastón County Highway Recommendations

- 1** I-85, I-5719A:  
From US 321 to NC 7 | 6.19 miles  
Widen to eight lanes.
- 2** I-85, I-5719B:  
From NC 7 to NC 273 | 3.63 miles  
Widen to eight lanes.
- 3** US 29/74, U-6043:   
From Cox Rd (SR 2200) to 400 # E of Lineberger Rd | 1.22 miles  
Widen the eastbound travel lanes on US 29/74 from east of Cox Rd (SR 2200)/Armstrong Park Rd to 400 feet east of Lineberger Rd from two to three lanes and add a sidewalk on the south side.
- 4** US 29/74, U-6146:   
From Market St to Alberta Ave (SR 2015) | 1.23 miles  
Widen to six lanes, replace Bridge 350082 over the South Fork of the Catawba River, and add a multiuse path on the north side and a sidewalk on the south side.
- 5** NC 274, U-5961:   
From Ocoelea St to Niblick Dr | 1.0 miles  
Redesign to a four-lane boulevard with sidewalk and multiuse path.
- 6** NC 279, U-5821:   
From Tilman Rd (SR 2478) to Union New Hope Rd (SR 2435) | 3.78 miles  
Widen to a four-lane divided facility with multiuse paths.
- 7** NC 279, U-2523B:   
From Robinson Clemmer Rd (SR 2275) to N Gaston St (SR 2278) | 1.92 miles  
Widen to multi-lanes with sidewalks and improve the intersection of NC 279 and NC 275.

Highway Class: ■ Congestion ■ Access Management ■ Modernization ■ Other (Safety, etc.) ● Bridge/Intersection



## Gastón County Bicycle and Pedestrian Recommendations

- 1** Delview Rd (SR 1651):   
From NC 150 to Black Rock School Rd (SR 1638) | 1.5 miles  
Add sidewalk to connect residential areas to commercial uses on NC 150.  
**Black Rock School Rd (SR 1638):**   
From Delview Rd (SR 1651) to Cherryville city limit | 0.49 miles  
Add sidewalk to improve sidewalk connections between residential areas and Downtown Cherryville.
- 2** ★ NC 150:   
From Cleveland County line to NC 274 | 2.03 miles  
Add a center turn lane, widen to 12-foot lanes, and add sidewalks.
- 3** NC 274:   
From S Pink St (SR 1428) to Ridge Ave | 1.6 miles  
Add bicycle lanes and fill sidewalk gaps on both sides, improving north-south connectivity in Cherryville.
- 4** N Pink St / S Pink St:   
From NC 274 to NC 274 | 1.68 miles  
Add sidewalks to connect Downtown Cherryville to residential areas, Cherryville Senior High School, and Cherryville City Park.
- 5** NC 150:   
From N Pink St to Bud Black Rd (SR 1002) | 2.72 miles  
Add sidewalks on both sides, filling gaps and improving sidewalk connections between residences, shopping, fast-food restaurants, and Cherryville High School sports stadiums.
- 6** Cherryville Connector:   
From Downtown Cherryville to the Lincoln County Line | 4.4 miles  
Add a multiuse path to connect Downtown Cherryville and Lincoln County.

Bike/Ped Class: ■ Bicycle ■ Pedestrian ■ Bike and Ped ■ Multiuse Path ● Bike/Ped Bridge

★ Denotes Highway Incidental



## Gastón County Public Transportation and Rail Recommendations

- 1** US 74 West High Capacity Transit Corridor:   
From Belmont to Kings Mountain | 18.49 miles  
This is a proposed High-Capacity Transit Corridor in CONNECT Beyond. The corridor is shown as Proposed Commuter Bus, but could be light rail, bus rapid transit, express bus, or commuter rail. Future studies are needed.
- 2** NC 16 Northwest High Capacity Transit Corridor:   
From Uptown Charlotte to Lowesville | 4.18 miles  
This is a proposed High-Capacity Transit Corridor in CONNECT Beyond. The corridor is shown as Proposed Commuter Bus, but could be light rail, bus rapid transit, express bus, or commuter rail. Future studies are needed.
- 3** Belmont Park and Ride:   
Walmart, 701 Hawley Ave | 0.0 miles  
This Park and Ride lot replaces the existing Park and Ride at Abbey Plaza.
- 4** Belmont Trolley:   
From Belmont Abbey College to Downtown Belmont | 0.17 miles  
The Belmont Trolley runs parallel to the Belmont Rail Trail, shuttling commuters, residents, and visitors between Belmont Abbey College and Downtown Belmont.
- 5** Belmont Park and Ride - McAdenville Rd:   
Main St/McAdenville Rd | 0.0 miles  
Proposed Park and Ride along CATS 85X route and proposed Belmont Trolley.
- 6** Belmont Park and Ride - Trolley Car Barn:   
Terminus of Proposed Belmont Trolley | 0.0 miles  
Proposed Park and Ride as a central destination and downtown hub.

Public Transit/Rail Class: ■ Urban Bus Corridor ■ Regional Bus Corridor ■ Rural Bus Corridor ■ Fixed Guideway  
■ Amtrak/Freight Route ■ Park and Ride or Multimodal ■ Amtrak/Light Rail Station or Intermodal Terminal

★ Denotes Highway Incidental



# Project Sheets

## Highway Projects

- STIP Projects
- Widening Projects
- New Location Projects

Gaston County CTP

**I-85**  
 From US 321 to NC 7

Local ID: I-5719A  
 Purpose: Congestion  
 Improvement: Widening

**Identified Need**  
 I-85 is projected to be overcapacity by 2055. It is the main east-west corridor in Gaston County and is vital to moving people and goods between Alabama and Virginia. Improvements are needed to relieve congestion and accommodate projected traffic and truck traffic volumes.

**Recommendation**  
 Widen to eight lanes.

**Proposal At A Glance**

Highway Class	Congestion & Mobility
Freeway <td>Freeway</td>	Freeway
Facility Type <td>Freeway</td>	Freeway
Typical Section <td>08 B</td>	08 B
Section Options <td>-</td>	-
Length (miles) <td>6.20</td>	6.20
Existing ROW (feet) <td>130-145</td>	130-145
Safety Risk Score <td>89</td>	89

**Proposal Data:**

	2023 Base Year	2055 Future Year
<b>Improved Route</b>	Existing	Without Proposal
<b>Facility Type</b>	Freeway	Freeway
<b>Travel Lanes</b>	6	8
<b>Volume (vpd)</b>	95500-139000	56200-162100
<b>Capacity (vpd)</b>	77400-82200	77400-82200
		125800

Capacity Data:	Year
Facility will be Approaching Capacity (>90%)	2023
Facility will be Over Capacity (>=100%)	2023

Project Sheets

04/02/2024

Gaston County CTP

**Typical Section Options:**  
None

**TYPICAL SECTION No. 8B**  
 8 LANE DIVIDED (27' MEDIAN WITH JERSEY BARRIER)  
 WITH PAVED SHOULDERS

PORTED SPEED 65-70 MPH

**Project Overview**

**Project History and Linkage to Other Plans**  
 This project is a part of the 2026-2035 STIP. Right-of-way (ROW) acquisition and construction are anticipated in 2029. The project is listed in the 2055 GCLMPO MTP with a Horizon Year of 2035. I-85 is classified as a NCDOT Strategic Transportation Corridor (STC) and the entire route is federally designated as part of the National Multimodal Freight Network.

**CTP Goal Analysis**  
**Vision and Goals**  
 The aim of the Gaston County CTP is to establish a multimodal transportation network that seamlessly moves people and goods, connecting users to economic and social opportunities while ensuring safety, reliability, accessibility, and environmental preservation.

**Public Engagement**  
 During the public engagement process, a survey was released to receive feedback on each project. This proposal was rated by 13 participants. 100% of participants agreed with this proposal. 1 comment was left on this project.

**Potential Impacts**  
**Relationship to Land Use**  
 This project lies within the municipal boundaries of Gastonia and Lowell. The corridor contains a mix of undeveloped, institutional, single-family residential, multi-family residential, commercial, and industrial uses.

**Other Information**  
**Crash Data**  
 Between January 2019 and December 2023, there were over 2,589 crashes on the segments containing this recommendation. There were 16 fatal or severe injury crashes, 472 moderate or minor injury crashes, and 2,101 property damage only crashes.

**Deficient Bridges**  
 There are 10 bridges along this facility that are Functionally Obsolete: Bridge #350002, Bridge #350059, Bridge #350126, Railroad #350129, Railroad #350132, Bridge #350133, Bridge #350134, Bridge #350136, Railroad #350138, and Bridge #350142. Functionally obsolete bridges are bridges that were built with different standards than those used today.

**Truck Traffic**  
 Average truck traffic along this recommendation is around 12%, with one segment as high as 17%.

**Resiliency**  
 The NCDOT RIP identified the road segment as moderate priority with 2 high priority culverts. The segment crosses 3 flood hazard areas, and several locations along the segment have an estimated 50 years between flood events with a potential flood depth of 0.1-1.6 feet.

Project Sheets

04/02/2026

# CTP Contact Information

## GASTON CTP Contact

**Juan G. Garcia**  
[Juan.Garcia@gastongov.com](mailto:Juan.Garcia@gastongov.com)  
(704) 866-3770

**Erin Musiol**  
[Erin.Musiol@rsandh.com](mailto:Erin.Musiol@rsandh.com)  
(704) 940-4704

## Other CTP Contacts

**NCDOT TPD**  
**Roger Castillo**  
[ricastillo@ncdot.gov](mailto:ricastillo@ncdot.gov)  
(919) 707-0942

**Emily Stupka**  
[elstupka@ncdot.gov](mailto:elstupka@ncdot.gov)  
(919) 707-0985

**GCLMPO**  
**Tori Dellinger**  
[Tori.Dellinger@gastoniansc.gov](mailto:Tori.Dellinger@gastoniansc.gov)  
(704) 854-6631

