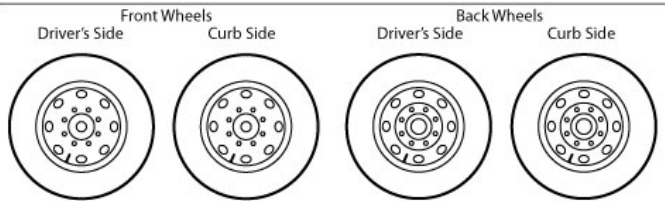
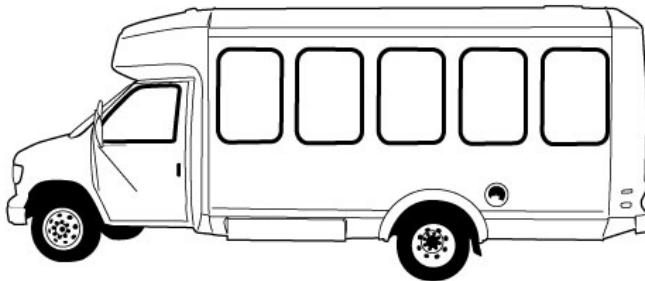
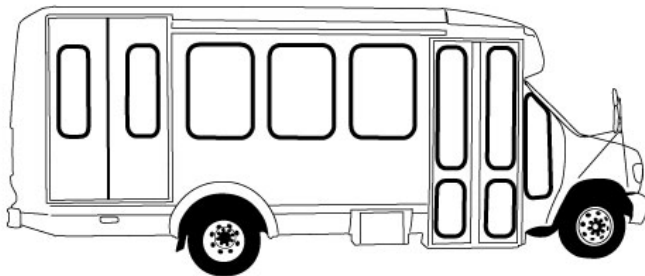


GASTON COUNTY ACCESS CENTRAL TRANSPORTATION

PUBLIC TRANSPORTATION SYSTEM SAFETY PLAN (SSP) 2021



THE SIX PLANS

1. Emergency Action Plan
2. Fire Prevention Plan
3. Preventive Maintenance Plan
4. Drug & Alcohol Policy
5. Security Plan
6. Continuity of Operations Plan

SYSTEM SAFETY PLAN DESCRIPTIONS OF ELEMENTS

1. POLICY STATEMENT AND AUTHORITY FOR SYSTEM SAFETY PLAN

- A. Effective October 2012, Moving Ahead for Progress in the 21st Century (MAP-21) mandated requirements for all public transportation to develop and implement a safety plan. As defined by MAP-21 public transportation is regular, continuing shared-ride surface transportation services that are open to the general public or open to a segment of the general public defined by age, disability, or low income.
- B. North Carolina Board of Transportation 2003 Resolution established the requirement for each transit system to develop and implement a System Safety Plan (SSP).
- C. Establish the SSP as an operating document that has been prepared for and approved by the transit system top management, chief executive officer or the governing board.
- D. The authority statement in the SSP should define, as clearly as possible, the following:
 - 1. The authority for establishment and implementation of the SSP
 - 2. How that authority has been delegated through the organization
- E. The SSP must adequately address the SIX CORE ELEMENTS.

2. DESCRIPTION OF PURPOSE FOR SYSTEM SAFETY PLAN

- A. Address the intent of the *SSP* and define why it is being written.
- B. Establish the safety philosophy of the whole organization and provide a means of implementation.
- C. A *SSP* could be implemented for the following reasons:
 - To establish a safety program on a system wide basis.
 - To provide a medium through which a system can display its commitment to safety.
 - To provide a framework for the implementation of safety policies and the achievement of related goals and objectives.
 - To satisfy federal and state requirements.
 - To meet accepted industry standards and audit provisions.
 - To satisfy self-insurance or insurance carrier provisions.
- D. The relationship of system safety to system operations should be defined.
- E. All departments involved must have a clear definition of their individual responsibilities relative to the scope of the *SSP*.
- F. This section should also contain system safety definitions applicable to the operating systems.

3. CLEARLY STATED GOALS FOR VEHICLE SAFETY MANAGEMENT PROGRAM

- A. The overall goal of a *SSP* is to identify, eliminate, minimize and control safety hazards and their attendant risks by establishing requirements, lines of authority, levels of responsibility and accountability, along with methods of documentation for the organization.
- B. These goals should be system-specific, tailored to the individual needs of the system, as well as being:
 - 1. Long term - the goal must have broad and continuing relevance.
 - 2. Meaningful - they must not be so broad as to be meaningless; desired results must be identified.
 - 3. Realizable - any goal that meets the first two criteria but cannot be attained is meaningless.
- C. Example:
 - 1. A goal might be to establish a high level of safety comparable to other transit systems in the U.S.
 - 2. Identify, eliminate, minimize, and/or control all safety hazards
 - 3. Provide appropriate action and measures to obtain necessary safety-related agreements, permits and approvals from outside agencies, where applicable.

4. IDENTIFIABLE AND ATTAINABLE OBJECTIVES

- A. Objectives are the working elements of the *SSP*, the means by which the identified goals are achieved.
 - 1. Must be quantifiable and meaningful.
 - 2. Met through the implementation of policies.
- B. Policies are central to the *SSP* and must be established by top management.
 - 1. They set the framework for guiding the safety program, on a relatively long-term basis.
 - 2. Policies are measurable.
 - 3. Policies are methods for reaching a specified objective.
- C. Example:

The establishment of a safety program incorporating public, patron, employee, and property safety including fire protection, loss prevention and life safety requirements.

Policies depend on the goals defined by the transit system and its safety philosophy.

EMERGENCY ACTION PLAN

(Ref: 1910.38)

5/18/21

INTRODUCTION:

This document is a plan to prepare for workplace emergencies. By auditing the workplace, training employees, obtaining and maintaining the necessary equipment, and by assigning responsibilities, human life and company resources will be preserved. The intent of this plan is to ensure all employees a safe and healthful workplace. Those employees' assigned specific duties under this plan will be provided the necessary training and equipment to ensure their safety. This plan applies to emergencies that could be reasonably expected in our workplace such as fire/smoke, tornadoes, bomb threats, leaks, etc.

EMERGENCY PLAN COORDINATORS:

Building/Department	Name/Title	Phone #
330 Dr. Martin Luther King Jr. Way/DHHS	Michael Coone/Adult and Aging Services Coordinator	704 862-7663
816 W. Mauney Ave./ACCESS	Twanna Littlejohn/Transportation Coordinator	704 866-3254
816 W. Mauney	Darryl Barber/Operations Supervisor	704 866-3220

Coordinators are responsible for the proper inventory and maintenance of equipment. They may be contacted by employees for further information on this Plan.

PLAN OUTLINE/DESCRIPTION:

- I. **Means of Reporting Emergencies:** All fires and emergencies will be reported by one or more of the following means as appropriate:
 - a. Verbally to the Coordinator during normal working hours.
 - b. Via telephone if after hours/weekends.
 - c. Via the building alarm system.

Note: The following emergency numbers will be posted throughout the facility:

FIRE: 704 866-6806

POLICE: County - 704 866-3320, City – 704 866-6880

AMBULANCE: 704 866-3300

- II. ***Alarm System Requirements:** Alarm system requirements for notifying employees during an emergency are as follows:
 - a. Provides warning for safe escape.
 - b. Can be perceived by all employees.
 - c. Alarm is distinctive and recognizable.
 - d. Employees have been trained on the alarm system.
 - e. Emergency phone numbers are posted.
 - f. Emergency alarms have priority over all other communications.
 - g. Alarm system is properly maintained.

- III. **Sounding the Alarm:** The signal for immediate evacuation of the facility will be No alarm sound available. The alternate means of notification will be by mouth to exit building.

- IV. **Evacuation Plans:** Emergency evacuation escape route plans (see Appendix A) are posted in key areas of the facility. All employees shall be trained on primary and secondary evacuation routes.

- V. **Employee Accountability:** In the event of an evacuation, all occupants shall promptly exit the building via the nearest exit. Go to your designated assembly point and report to your supervisor. Each supervisor (or designee) will account for each assigned employee via a head count. All supervisors shall report their head count to Transportation Coordinator
Who will be located at 816 W. Mauney Ave. and accessible via cell phone # 980 925-9200.

- VI. **Building Re-Entry:** Once evacuated, no one shall re-enter the building. Once the Fire Department or other responsible agency has notified us that the building is safe to re-enter, then personnel shall return to their work areas.

- VII. **Hazardous Weather:** A hazardous weather alert consists of an all call to drivers to seek shelter immediately.
When a hazardous weather alert is made, all employees shall immediately report to the
closest tornado refuge area (see Appendix A). Stay in this area until given the all-clear sign which is a call cell phones of all drivers.

- VIII. **Training:** The personnel listed below have been trained to assist in the safe and orderly emergency evacuation of employees

Task	Building/Department	Name/Title/Phone#
Fire Extinguisher/Hoses	816 W. Mauney Ave./ACCESS	Darryl Barber/Operations Supervisor/980 522-7487
Evacuation Assistant	816 W. Mauney Ave./ACCESS	Darryl Barber/Operations Supervisor/980 522-7487
Emergency Shut-down	816 W. Mauney Ave./ACCESS	Darryl Barber/Operations Supervisor/980 522-7487

Employee training should be provided when:

- this Program is initiated
- the responsibilities of essential employees' changes
- when the Program is revised
- when new employees are hired.

Subjects addressed include:

- a. Emergency escape procedures/routes
- b. Fire extinguisher locations and proper use
- c. Head count procedures
- d. Major facility fire hazards
- e. Fire prevention practices
- f. Means of reporting fires/emergencies (use of alarm systems)
- g. Names/titles of Coordinators
- h. Availability of the plan to employees
- i. Housekeeping practices
- j. No smoking areas
- k. Hazardous weather procedures
- l. Special duties as assigned to Coordinators and those listed above.

Written records shall be maintained of all Emergency Action Plan training.

*For further information on Employee Alarm Systems, see 1910.165.

FIRE PREVENTION PLAN

5/18/21

I. Policy

Established _____
(date)

(Accountable Executive/Transportation Coordinator)

It is the policy of Gaston County ACCESS to provide to employees the safest practical workplace free from areas where potential fire hazards exist. The primary goal of this Fire Prevention Plan is to reduce or eliminate fire in the workplace by heightening the fire safety awareness of all employees. Another goal of this Plan is to provide all employees with the information necessary to recognize hazardous conditions and take appropriate action before such conditions result in a fire emergency.

This Fire Prevention Plan complies with the requirements of 29 CFR 1910.39.

This Plan details the basic steps necessary to minimize the potential for fire occurring in the workplace. Prevention of fires in the workplace is the responsibility of everyone employed by the company, but must be monitored by each supervisor overseeing any work activity that involves a major fire hazard. Every effort will be made by the company to identify those hazards that might cause fires and establish a means for controlling them.

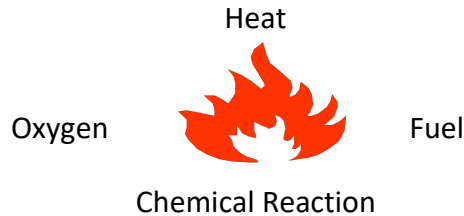
The Fire Prevention Plan will be administered by Deputy Fire Marshal who will compile a list of all major workplace fire hazards, the names or job titles of personnel responsible for fire control and prevention equipment maintenance, names or job titles of personnel responsible for control of fuel source hazards and locations of all fire extinguishers in the workplace. The Plan administrator, or safety officer, must also be familiar with the behavior of employees that may create fire hazards as well as periods of the day, month, and year in which the workplace could be more vulnerable to fire.

This Plan will be reviewed annually and updated as needed to maintain compliance with applicable regulations and standards and remain up-to-date with best practices in fire protection. Workplace inspection reports and fire incident reports will be maintained and used to provide corrections and improvements to the plan.

This Plan will be available for employees to view at all times during normal working hours.

II. CLASSIFICATION

Fire is a chemical reaction involving the rapid oxidation or burning of a fuel. It needs four elements to occur as illustrated below in the tetrahedron. This is described by the following illustration:



The first component of the tetrahedron is fuel. Fuel can be any combustible material such as: solid (such as wood, paper, or cloth), liquid (such as gasoline) or gas (such as acetylene or propane). Solids and liquids generally convert to gases or vapors before they will burn.

Another component of the tetrahedron is oxygen. Fire only needs an atmosphere with at least 16% oxygen.

Heat is also a component of the tetrahedron. Heat is the energy necessary to increase the temperature of the fuel source to a point in which sufficient vapors are emitted for ignition to occur.

The final side of the tetrahedron represents a chemical chain. When these components are brought together in the proper conditions and preparations, fire will develop. Take away any one of these elements, and the fire cannot exist or will be extinguished if it was already burning.

Fires are classified into four groups per sources of fuel: Class A, B, C, and D based on the type of fuel source. Table 1 below describes the classifications of fire which can be used in making hazard assessment.

Class A	Ordinary combustible materials such as paper, wood, cloth and some rubber and plastic materials.
Class B	Flammable or combustible liquids, flammable gases, greases and similar materials, and some rubber and plastic materials.
Class C	Energized electrical equipment and power supply circuits and related materials.
Class D	Combustible metals such as magnesium, titanium, zirconium, sodium, lithium and potassium.

III. DETERMINING FIRE HAZARDS

This section consists of two steps: first, identifying the existing fire hazards in the workplace and second, acting to resolve them. The inspection checklist, in Appendix A, provides a guide for precise fire-safe practices that must be followed. The location of these major fire hazards are denoted in Appendix C. Also included in Appendix C is a listing of the personnel responsible for the maintenance of the equipment and systems installed to prevent or control fires.

Material hazards shall be identified, as evident on the specific Material Safety Data Sheets (MSDS), and labeled on containers as soon as they arrive in the workplace. The identification system shall also include incorporation into the company's hazard communication program.

OXYGEN-ENERGIZED ATMOSPHERES

Oxygen-enriched atmospheres involve operating rooms and anesthesia machines, oxygen tents as used by ambulances, fire and police or rescue squads; hospitals and laboratory supply systems; cutting and welding. If practical, nonflammable anesthetic agents will be used. To prevent dangerous adiabatic heating of flammable anesthetic gases, the cylinder valves will be opened very slowly to allow the gradual introduction of the high-pressure gas downstream from the cylinder valve. This will permit a slow buildup of pressure and hence temperature. An aid to the identification of hazards associated with medical agents and gases in NFPA 704, Standard Systems for the Identification of the Fire Hazards of Materials.

INDUSTRIAL TRUCKS

The type of industrial truck being used shall be approved for use within any building storing hazardous materials. All refueling operations shall be conducted outside and away from storage of flammable materials. Areas that are used for maintenance and battery charging of electrical trucks should be separated from storage areas.

IV. STORAGE AND HANDLING PROCEDURES

The storage of material shall be arranged such that adequate clearance is maintained away from heating surfaces, air ducts, heaters, flue pipes, and lighting fixtures. All storage containers or areas shall prominently display signs to identify the material stored within. Storage of chemicals shall be separated from other materials in storage, from handling operations, and from incompatible materials. All individual containers shall be identified as to their contents.

Only containers designed, constructed, and tested in accordance with the U. S. Department of Transportation specifications and regulations are used for storage of

compressed or liquefied gases. Compressed gas storage rooms will be areas reserved exclusively for that purpose with good ventilation and at least 1-hour fire resistance rating. The gas cylinders shall be secured in place and stored away from any heat or ignition source. Pressurized gas cylinders shall never be used without pressure regulators.

ORDINARY COMBUSTIBLES

- Wooden pallets will not be stacked over 6 feet tall. If feasible, extra pallets will be stored outside or in separate buildings to reduce the risk of fire hazards.
- Piles of combustible materials shall be stored away from buildings and located apart from each other sufficiently to allow firefighting efforts to control an existing fire.

FLAMMABLE MATERIALS

- Bulk quantities of flammable liquids shall be stored outdoors and away from buildings. Smaller quantities are subsequently brought into a mixing room where they are prepared for use. The mixing room shall be located next to an outside wall equipped with explosion relief vents. The room shall also have sufficient mechanical ventilation to prevent the accumulation of flammable vapor concentration in the explosive range.
- Small quantities (limited to amount necessary to perform an operation for one working shift) of flammable liquids shall be stored in, and dispensed from, approved safety containers equipped with vapor-tight, self-closing caps, screens or covers.
- Flammable liquids shall be stored away from sources that can produce sparks.
- Flammable liquids shall only be used in areas having adequate and, if feasible, positive ventilation. If the liquid is highly hazardous, the liquid shall only be used in areas with a local exhaust ventilation.
- Flammable liquids shall never be transferred from one container to another by applying air pressure to the original container. Pressurizing such containers may cause them to rupture, creating a serious flammable liquid spill.
- When dangerous liquids are being handled, a warning sign will be posted near the operation, notifying other employees and giving warning that open flames are hazardous and are to be kept away.
- The storage and usage areas will include fire-resistive separations, automatic sprinklers, special ventilation, explosion-relief valves, separation of

incompatible materials, and the separation of flammable materials from other materials.

V. POTENTIAL IGNITION SOURCES

- Ensure that utility lights always have some type of wire guard over them.
- Don't misuse fuses. Never install a fuse rated higher than specified for the circuit.
- Investigate any appliance or equipment that smells strange. Space heaters, microwave ovens, hot plates, coffee makers and other small appliances shall be rigidly regulated and closely monitored.
- The use of extension cords to connect heating devices to electric outlets shall be prohibited.
- If a hot or under inflated tire is discovered, it should be moved well away from the vehicle. As an alternative, the driver should remain with the vehicle until the tire is cool to the touch, and then make repairs. If a vehicle is left with a hot tire, the tire might burst into flames and destroy the vehicle and load.

Table 2 below lists common sources of ignition that cause fires in the workplace, gives examples in each case, and suggests preventive measures.

Source of Ignition	Examples	Preventive Measures
Electrical Equipment Defects	generally due to poor maintenance, mostly in wiring, switches, lamps, and hot elements.	Use only approved equipment. Follow Code.
Friction	Hot bearings, misaligned or broken machine parts, poor adjustment.	Follow regular maintenance schedule.
Open Flames	Cutting and welding torches, gas oil burners, misuses of gasoline burners.	Follow established cautions. Keep burners clean and properly adjusted. Do not use open flame near combustibles.
Static electricity	Occurs where liquid flows from pipes.	Ground equipment. Use static eliminators. Humidify atmosphere.
Hot surfaces	Furnaces, electric lamps, or irons unattended.	Provide ample clearance, insulation, air circulation. Check heating apparatus prior to leaving it unattended.

WELDING AND CUTTING

Welding and cutting will not be permitted.

OPEN FLAMES

No open flames will be permitted in or near spray booths or spray rooms. If indoor spray-painting work needs to be performed outside of standard spray-painting booths, adequate ventilation will be provided. All potential ignition sources will also be eliminated.

Gasoline or alcohol torches shall be placed so that the flames are at least 18 inches away from wood surfaces. They will not be used in the presence of dusts, vapors, flammable combustible liquids, paper or similar materials. Torches shall never be left unattended while they are burning.

The company has a specific policy regarding cigarette/cigar/pipe smoking in the workplace. Smoking and no-smoking areas will be clearly delineated with conspicuous signs. Rigid enforcement will always be maintained. The plan administrator will enforce observance of permissible and prohibited smoking areas for employees and outside visitors to the workplace. Fire-safe, metal containers will be provided where smoking is permitted. No-smoking areas will be checked periodically for evidence of discard smoking materials.

STATIC ELECTRICITY

The company recognizes that it is impossible to prevent the generation of static electricity in every situation, but the company realizes that the hazard of static sparks can be avoided by preventing the buildup of static charges. One or more of the following preventive methods will be used: grounding, bonding, maintaining a specific humidity level (usually 60-70 percent), and ionizing the atmosphere.

Where a static accumulating piece of equipment is unnecessarily located in a hazardous area, the equipment will be relocated to a safe location rather than attempt to prevent static accumulation.

VI. HOUSEKEEPING PREVENTATIVE TECHNIQUES

The following are housekeeping techniques and procedures to prevent occurrences of fire.

- Keep storage and working areas free of trash.
- Place oily rags in covered containers and dispose of daily.
- Do not use gasoline or other flammable solvent or finish to clean floors.
- Use noncombustible oil-absorptive materials for sweeping floors.
- Dispose of materials in noncombustible containers that are emptied daily.
- Remove accumulation of combustible dust.
- Don't refuel gasoline-powered equipment in a confined space, especially in the presence of equipment such as furnaces or water heaters.
- Don't refuel gasoline-powered equipment while it is hot.
- Follow proper storage and handling procedures.
- Ensure combustible materials are present only in areas in quantities required for the work operation.
- Clean up any spill of flammable liquids immediately.
- Ensure that if a worker's clothing becomes contaminated with flammable liquids, these individuals change their clothing before continuing to work.
- Post "No Smoking" caution signs near the storage areas.
- Report any hazardous condition, such as old wiring, worn insulation and broken electrical equipment to the supervisor.
- Keep motors clean and in good working order.
- Don't overload electrical outlets.
- Ensure all equipment is turned off at the end of the workday.
- Maintain the right type of fire extinguisher available for use.

- Use the safest cleaning solvents (nonflammable and nontoxic) when cleaning electrical equipment.
- Ensure that all passageways and fire doors are unobstructed. Stairwell doors shall never be propped open, and materials shall not be stored in stairwells.
- Periodically remove over spray residue from walls, floors, and ceilings of spray booths and ventilation ducts.
- Remove contaminated spray booth filters from the building as soon as replaced, or keep immersed in water until disposed.
- Don't allow material to block automatic sprinkler systems, or to be piled around fire extinguisher locations. To obtain the proper distribution of water, a minimum of 18 inches of clear space must be maintained below sprinkler deflectors. If there are no sprinklers, a 3-foot clearance between piled material and the ceiling must be maintained to permit use of hose streams. These distances must be doubled when stock is piled higher than 15 feet.
- Check daily for any discard lumber, broken pallets or pieces of material stored on site and remove properly.
- Remove immediately any pile of material which falls into an aisle or clear space.
- Use weed killers that are not toxic and do not pose a fire hazard.

FIRE PROTECTION EQUIPMENT

Every building will be equipped with an electrically managed, manually operated fire alarm system. When activated, the system will sound alarms that can be heard above the ambient noise levels throughout the workplace. The fire alarm will also be automatically transmitted to the fire department. Any fire suppression or fire detection system will automatically actuate the building alarm system.

The automatic sprinkler system, if applicable, will adhere to NFPA 13, Standard for the Installation of Sprinkler Systems. The sprinkler system and components will be electrically supervised to ensure reliable operation. This includes gate valve tamper switches with a local alarm at a constantly attended site when the valve is closed. If a single water supply is provided to be a connection to the city mains, a low-pressure monitor is included. If pressure tanks are the primary source of water, air pressure, water level, and temperature they shall be supervised. If fire pumps are provided to boost system pressure, supervision will monitor loss of pump power, pump running indication, low system pressure, and low pump suction pressure.

In hospitals, every patient sleeping room will be provided with an outside window or door that can be opened from the inside; this will allow venting of products of combustion if there is a fire. A specially designed smoke control system can be a substitute for an outside window.

Portable fire extinguishers are placed in a building. Fire extinguishers must be kept fully charged and in their designated places. The extinguishers will not be obstructed or obscured from view. A map indicating the locations of all fire extinguishers for this company is located in Appendix E. The fire extinguishers will also be inspected by Operations Supervisor, at least monthly, to make sure that they are in their designated places, have not been tampered with or actuated, and are not corroded or otherwise impaired. Attached inspection tags shall be initialed/dated each month. The location of all hydrants, hose houses, portable fire extinguishers, or other fire protective equipment should be properly marked with arrows and signs painted on the pavement.

VII. TRAINING

All employees shall be instructed on the locations and proper use of fire extinguishers in their work areas. Employees shall also be instructed as to how to operate the building's fire alarm system and be familiar with evacuation routes. The training of all employees shall include the locations and types of materials and/or processes which pose potential fire hazards. The training program shall also emphasize the following:

1. Use and disposal of smoking materials
2. The importance of electrical safety
3. Proper use of electrical appliances and equipment
4. Unplugging heat-producing equipment and appliances at the end of each workday
5. Correct storage of combustible and flammable materials
6. Safe handling of compressed gases and flammable liquids (where appropriate)

Initial training and ongoing training shall include regularly scheduled fire drills. Training documentation shall be placed in Appendix D.

Appendix A

FIRE PREVENTION CHECKLIST

This checklist should be reviewed regularly and kept up to date.

ELECTRICAL EQUIPMENT

- No makeshift wiring
- Extension cords serviceable
- Motors and tools free of dirt and grease
- Lights clear of combustible materials
- Fuse and control boxes clean and closed
- Circuits properly fused or otherwise protected
- Equipment approved for use in hazardous areas (if required)
- Safest cleaning solvents used

FRICTION

- Machinery properly lubricated
- Machinery properly adjusted and/or aligned

SPECIAL FIRE-HAZARD MATERIALS

- Storage of special flammable isolated
- Nonmetal stock free of tramp metal

WELDING AND CUTTING

- Area surveyed for fire safety
- Combustible removed or covered
- Permit issued

OPEN FLAMES

- Kept away from spray rooms and booths
- Portable torches clear of flammable surfaces
- No gas leaks

PORTABLE HEATERS

- Set up with ample horizontal and overhead clearances
- Safely mounted on noncombustible surfaces
- Secured against tipping or upset
- Use of steel drums prohibited
- Combustibles removed or covered
- Not used as rubbish burners

HOT SURFACES

- Hot pipes clear of combustible materials
- Soldering irons kept off combustible surfaces
- Ample containers available and serviceable
- Ashes in metal containers

SMOKING AND MATCHES

- "No smoking" and "smoking" areas clearly marked
- No discarded smoking materials in prohibited areas
- Butt containers available and serviceable

SPONTANEOUS IGNITION

- Flammable waste material in closed, metal containers
- Piled material, dry, and well ventilated
- Flammable waste material containers emptied frequently
- Trash receptacle emptied daily

STATIC ELECTRICITY

- Flammable liquid dispensing vessels grounded and bonded
- Proper humidity maintained
- Moving machinery grounded

HOUSEKEEPING

- No accumulation of rubbish
- Safe storage of flammables
- No leaks or dripping of flammables and floor free of spills
- Passageways clear of obstacles
- Automatic sprinklers unobstructed
- Premises free of unnecessary combustible materials
- Fire doors unblocked and operating freely

FIRE PROTECTION

- Proper type of fire extinguisher
- Fire extinguisher in proper location
- Access to fire extinguishers unobstructed
- Access to fire extinguishers clearly marked
- Fire protection equipment turned on
- Extinguishing system in working order
- Service date current
- Personnel trained in use of equipment
- Personnel exits unobstructed and maintained

APPENDIX B

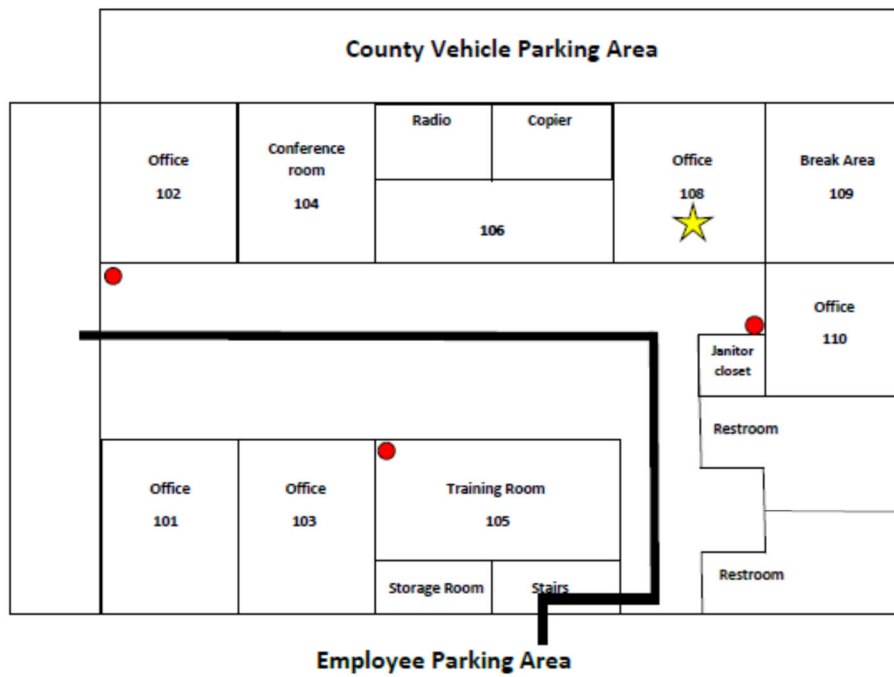
INSPECTION LOGS AND FIRE INCIDENT REPORTS

Drivers provide monthly inspection of vehicle extinguishers. Safety Officer/Operations Supervisor provides monthly inspection of facility extinguishers. City provides annual inspection.

APPENDIX E

FIRE EXTINGUISHER LOCATIONS

SAMPLE EVACUATION PLAN WITH FIRE EXTINGUISHERS IDENTIFIED



X Meeting Area

PREVENTATIVE MAINTENANCE PLAN

5/18/21

Preventive maintenance is a term used to describe the performance of regularly scheduled maintenance procedures of a vehicle to prevent the possibility of malfunctions. It is this agency's policy to follow that minimum required maintenance set forth by the manufacturer standards. All preventative maintenance will be reported/completed in a timely manner.

MAINTENANCE

Each vehicle is assigned a number by the Coordinator of Transportation which is affixed to each vehicle in a visible location (driver side front under the headlight, on the cover for the gas tank and the back passenger side above the brake light. The phone number and facility name are put on the vehicles when purchased.

Every transit driver is responsible for ensuring that periodic maintenance is performed on the vehicle assigned to him/her. The transit driver will indicate on the Pre-Trip Inspection Form when the vehicle is within 500 miles of the next scheduled service.

All requests for service and maintenance must be given to the Coordinator. Repairs are posted on the Maintenance Repair form generated by the AssetWorks program. A copy of the form must be taken with the vehicle to the maintenance provider and a copy of the form is filed with the coordinator and posted in the Vehicle Maintenance Log.

In the event of a mechanical failure while the vehicle is in service, the driver will call the Coordinator to report the need for service. The coordinator will contact the maintenance provider during normal business hours or the wrecker service at other times.

Preventative Maintenance Schedule

Be alert and ready to make schedule alterations per your specific needs. When making alterations, be sure to document any changes and update this list for reference.

Regularly

Wash vehicle interior and exterior – determine need by the amount of use and road conditions. (Salt used for clearing roads and chloride compounds used to control dust on unpaved roads may require more frequent washes.

Clean the windshield wiper blades as required.

Unscheduled

Replace:

- Alternator
- Starter motor
- Windshield wiper motor
- Windshield wiper blades
- Exhaust components: muffler, manifolds, pipes, hangers and clamps, headlamps, turn signal bulbs, brake lights and marker lights.
- Vehicle interior fittings, seat materials
- Wheelchair lift components
- Wheelchair restraint components

Every Year

Flush radiator
Replace coolant
Service air conditioner

Every 2 Years

Replace all hoses; more often if necessary.

Every 2 Years

Replace battery

Mileage Specific

* In dusty areas, the air filter should be replaced every 10,000 miles.

** PVC value and brake pad replacements and engine tune-ups may need to be performed more often than suggested in this schedule.

6,000 Change oil, oil filter, lubricate outer tie rod ends, rotate tires, check transmission fluid level, check coolant level, hoses and clamps, inspect exhaust system and brake hoses, inspect CV joints (if equipped) and front suspension components.

12,000 Change oil, oil filter, lubricate outer tie rod ends, lubricate steering linkage, rotate tires, check transmission fluid level, check coolant level, hoses, and clamps, inspect exhaust system and brake hoses.

18,000 Change oil, oil filter, lubricate outer tie rod ends, lubricate front suspension ball joints, rotate tires, check transmission fluid level, check coolant level, hoses, and clamps, inspect exhaust system, brake hoses and brake linings, inspect CV joints (if equipped) and front suspension components, inspect front wheel bearing, clean and repack if required.

24,000 Change oil, oil filter, lubricate outer tie rod ends, lubricate steering linkage, rotate tires, Check transmission fluid level, check coolant level, hoses and clamps, inspect exhaust system and brake and brake hoses, inspect CV joints (if equipped) and front suspension components.

30,000 Change oil, oil filter, lubricate outer tie rod ends, replace engine air cleaner filter, replace spark plugs, rotate tires, check transmission fluid level and fill plug condition, check coolant level, hoses and clamps, check transfer case fluid level, inspect exhaust system and brake hoses, inspect the CV joints (if equipped) and front suspension components.

36,000 Change oil, oil filter, flush and replace engine coolant regardless of mileage, lubricate outer tie rod ends, lubricate front suspension ball joints, lubricate steering linkage, rotate tires, check transmission fluid

level, check coolant level, hoses, and clamps, inspect exhaust system, brake hoses and brake linings, inspect CV joints (if equipped) and front suspension components, inspect front wheel bearing, clean and repack if required.

- 42,000 Change oil, oil filter, lubricate outer tie rod ends, rotate tires, check transmission fluid level, check coolant level, hoses, and clamps, inspect exhaust system and brake hoses. Inspect CV (if equipped) and front suspension components.
- 48,000 Change oil, oil filter, flush and replace engine coolant, lubricate out tie rod ends, lubricate steering linkage, rotate tires, check transmission fluid level, check coolant level, hoses, and clamps, inspect exhaust system and brake hoses, inspect CV joints (if equipped) and front suspension components.
- 54,000 Change oil, oil filter, lubricate outer tie rod ends, lubricate front suspension ball joints, rotate tires, check transmission fluid level, check coolant level, hoses, and clamps, inspect exhaust system, brake hoses and brake linings, inspect CV joints (if equipped) and front suspension components, inspect front wheel bearings, clean and repack if required.
- 60,000 Change oil, oil filter, flush and replace engine coolant, replace ignition cables, replace ignition cables, replace engine air cleaner filter, replace spark plugs, lubricate steering linkage, rotate tires, check transfer case fluid level, check transmission fluid level, and fill plug condition, check coolant level, hoses and clamps, inspect exhaust system and brake hoses, inspect the CV joints (if equipped) and front suspension components, inspect PCV valve, replace as necessary, inspect auto tension drive belt and replace if required.
- 66,000 Change oil, oil filter, lubricate outer tie rod ends, lubricate steering linkage, rotate tires, check coolant level, hoses and clamps, inspect exhaust system and brake hoses, inspect CV joints (if equipped).
- 72,000 Change oil, oil filter, lubricate steering linkage, rotate tires, lubricate outer tie rod ends, lubricate front suspension ball joints, check transmission fluid level, check coolant level, hoses and clamps, inspect exhaust system, brake hoses and brake linings, Inspect CV joints (if equipped) and front suspension components, inspect front wheel bearings, clean and repack if required, inspect and replace auto tension drive belt if required.

78,000	Change engine oil, oil filter, flush and replace engine coolant, lubricate outer tie rod ends, rotate tires, check transmission fluid level, check coolant level, hoses and clamps, inspect CV joints (if equipped) and front-end suspension components.
84,000	Change oil, and filter, lubricate outer tie rod ends, lubricate steering linkage, rotate tires, check transmission fluid level, check coolant level, hoses and clamps, inspect exhaust system and brake hoses, inspect CV joints (if equipped) and front suspension components.
90,000	Change oil, oil filter, drain and refill transfer case fluid, lubricate front suspension ball joints, lubricate outer tie rod ends, replace ignition cables, replace engine air cleaner filter, replace spark plugs, rotate tires, check transmission fluid level and fill plug condition, check coolant level, hoses and clamps, inspect exhaust system, brake hoses and brake linings, inspect the CV joints (if equipped) and front suspension components, inspect PCV valve, replace if necessary, inspect auto tension drive belt and replace if required, inspect front wheel bearings, clean and repack if required, inspect auto tension drive belt and replace if required.
96,000	Change oil, oil filter, lubricate outer tie rod ends, lubricate steering linkage, rotate tires, check transmission fluid level, check coolant level, hoses and clamps, inspect exhaust system and brake hoses, inspect CV joints (if equipped) and front suspension components.
100,000	Change oil, oil filter, lubricate outer tie rod ends, rotate tires, check transmission fluid level, check coolant level, hoses and clamps, inspect exhaust system and brake hoses, inspect CV joints (if equipped) and front suspension components. Drain and fill automatic transmission fluid, change filter, and adjust bands, flush and replace engine coolant, flush and replace power steering fluid.
106,000	Change oil, oil filter, lubricate outer tie rod ends, rotate tires, check transmission fluid level, check coolant level, hoses and clamps, inspect exhaust system and brake hoses, inspect CV joints (if equipped) and front suspension components.
112,000	Change oil, oil filter, lubricate outer tie rod ends, lubricate steering linkage, rotate tires, check transmission fluid level, check coolant level, hoses, and clamps, inspect exhaust system and brake hoses.
118,000	Change oil, oil filter, lubricate outer tie rod ends, lubricate front suspension ball joints, rotate tires, check transmission fluid level, check

124,000	<p>coolant level, hoses, and clamps, inspect exhaust system, brake hoses and brake linings, inspect CV joints (if equipped) and front suspension components, inspect front wheel bearing, clean and repack if required.</p> <p>Change oil, oil filter, lubricate outer tie rod ends, lubricate steering linkage, rotate tires, Check transmission fluid level, check coolant level, hoses and clamps, inspect exhaust system and brake and brake hoses, inspect CV joints (if equipped) and front suspension components.</p>
130,000	<p>Change oil, oil filter, lubricate outer tie rod ends, replace engine air cleaner filter, replace spark plugs, rotate tires, check transmission fluid level and fill plug condition, check coolant level, hoses and clamps, check transfer case fluid level, inspect exhaust system and brake hoses, inspect the CV joints (if equipped) and front suspension components.</p>
136,000	<p>Change oil, oil filter, flush and replace engine coolant regardless of mileage, lubricate outer tie rod ends, lubricate front suspension ball joints, lubricate steering linkage, rotate tires, check transmission fluid level, check coolant level, hoses, and clamps, inspect exhaust system, brake hoses and brake linings, inspect CV joints (if equipped) and front suspension components, inspect front wheel bearing, clean and repack if required.</p>
142,000	<p>Change oil, oil filter, lubricate outer tie rod ends, rotate tires, check transmission fluid level, check coolant level, hoses, and clamps, inspect exhaust system and brake hoses. Inspect CV (if equipped) and front suspension components.</p>
148,000	<p>Change oil, oil filter, flush and replace engine coolant, lubricate out tie rod ends, lubricate steering linkage, rotate tires, check transmission fluid level, check coolant level, hoses, and clamps, inspect exhaust system and brake hoses, inspect CV joints (if equipped) and front suspension components.</p>
154,000	<p>Change oil, oil filter, lubricate outer tie rod ends, lubricate front suspension ball joints, rotate tires, check transmission fluid level, check coolant level, hoses, and clamps, inspect exhaust system, brake hoses and brake linings, inspect CV joints (if equipped) and front suspension components, inspect front wheel bearings, clean and repack if required.</p>
160,000	<p>Change oil, oil filter, lubricate outer tie rod ends, rotate tires, check transmission fluid level, check coolant level, hoses and clamps, inspect exhaust system and brake hoses, inspect CV joints (if equipped) and front suspension components.</p>

- 166,000 Change oil, oil filter, flush and replace engine coolant, replace ignition cables, replace ignition cables, replace engine air cleaner filter, replace spark plugs, lubricate steering linkage, rotate tires, check transfer case fluid level, check transmission fluid level, and fill plug condition, check coolant level, hoses and clamps, inspect exhaust system and brake hoses, inspect the CV joints (if equipped) and front suspension components, inspect PCV valve, replace as necessary, inspect auto tension drive belt and replace if required.
- 172,000 Change oil, oil filter, lubricate steering linkage, rotate tires, lubricate outer tie rod ends, lubricate front suspension ball joints, check transmission fluid level, check coolant level, hoses and clamps, inspect exhaust system, brake hoses and brake linings, Inspect CV joints (if equipped) and front suspension components, inspect front wheel bearings, clean and repack if required, inspect and replace auto tension drive belt if required.
- 178,000 Change engine oil, oil filter, flush and replace engine coolant, lubricate outer tie rod ends, rotate tires, check transmission fluid level, check coolant level, hoses and clamps, inspect CV joints (if equipped) and front end suspension components.
- 184,000 Change oil, and filter, lubricate outer tie rod ends, lubricate steering linkage, rotate tires, check transmission fluid level, check coolant level, hoses and clamps, inspect exhaust system and brake hoses, inspect CV joints (if equipped) and front suspension components.
- 190,000 Change oil, oil filter, Drain and refill transfer case fluid, lubricate front suspension ball joints, lubricate outer tie rod ends, replace ignition cables, replace engine air cleaner filter, replace spark plugs, rotate tires, check transmission fluid level and fill plug condition, check coolant level, hoses and clamps, inspect exhaust system, brake hoses and brake linings, inspect the CV joints (if equipped) and front suspension components, inspect PCV valve, replace if necessary, inspect auto tension drive belt and replace if required, inspect front wheel bearings, clean and repack if required, inspect auto tension drive belt and replace if required.
- 196,000 Change oil, oil filter, lubricate outer tie rod ends, lubricate steering linkage, rotate tires, check transmission fluid level, check coolant level, hoses and clamps, inspect exhaust system and brake hoses, inspect CV joints (if equipped) and front suspension components. Drain and fill automatic transmission fluid, change filter, and adjust bands, flush and replace engine coolant, flush and replace power steering fluid.

202,000 Change oil, oil filter, lubricate outer tie rod ends, rotate tires, check transmission fluid level, check coolant level, hoses and clamps, inspect exhaust system and brake hoses, inspect CV joints (if equipped) and front suspension components.

Wheelchair Lift Maintenance Schedule

Perform lift maintenance at scheduled intervals according to number of cycles or elapsed time, whichever comes first. Correct any potentially dangerous situations at once.

Daily Inspections

Pre/Post-trip inspections are crucial to the success of every agency's Preventative Maintenance Program. Each driver will inspect his or her vehicle before leaving the parking area by completing the Pre-Trip Vehicle Inspection Form. The completed checklist must be submitted to the Coordinator at the end of the driver's shift so that necessary maintenance can be noted and scheduled accordingly. Drivers must sign each checklist for each vehicle used that day.

PRE-TRIP INSPECTION

Under the Hood

Check for problems under the hood at the beginning of the inspection before starting the engine. It is easier and safer when the engine is cool.

Check the oil, radiator and battery fluid levels. If low, list this on the inspection checklist. If any fluids are below the safe level, see the Transit Coordinator for assistance.

Also, check hoses for cracks or possible leaks and belts for any visible damage. Report any wear on the checklist, as soon as it begins to show.

Vehicle Interior

Since the vehicle will need to remain started while you conduct the inspection, best practices encourage placing chocks behind the wheels prior to starting the motor.

First, engage the parking brake.

Second, start the vehicle.

Next, check the oil pressure, fuel and alternator gauges.

If the oil pressure light remains on or the gauge shows the oil pressure to be dangerously low, turn the motor off until the problem can be corrected. Alert the Transit Coordinator and document this information on the pre-trip inspection form.

If the alternator or generator light stays on, the battery may not be charging. To guard against the possibility of becoming stranded along the route by a dead battery, have the problem located and corrected right away.

Check the windshield wipers to make sure they are working and not worn or stripped.

Vehicle Exterior

Turn on all exterior lights. With the vehicle in park and the emergency brake still on, begin the exterior check from the front of the vehicle.

During the exterior inspection, be sure to note and report any evidence of fresh damage to the vehicle. Reporting such damage now may save you a lengthy and difficult explanation or report later. Space is provided for you on the Daily Vehicle Inspection Checklist to note and describe any exterior damage.

Check the all lights (clearance, head, tail, signal and emergency flashers) to make sure they are working. (You may need a co-worker's assistance).

Check the left front tire for any signs of road damage or under-inflation.

- Check the air pressure with an air pressure gauge.

- Take care to maintain your tires at the recommended pressure.

- A soft tire is very susceptible to severe road damage.

An over-inflated tire causes a bumpier and less comfortable ride,
Especially for elderly or disabled passengers.

Check the condition of the side marker light.

Move to the back of the vehicle and inspect the rear left tire or duals for obvious damage.

Check the air pressure with an air pressure gauge.

While at the back of the vehicle, check the taillights, the brake lights, turn signal lights, emergency flashers and any other clearance lights, reflectors or signs. (This will require assistance).

Make sure tires are free of mud and dirt buildup.

Store a cloth to clean any dirty lights, which may be hard to see even after dark.

Check the right rear tire. If there are any other lights or outside signs for your boarding doors or lifts, make sure they are in place and clean.

Next, look under the vehicle. Make sure there are no foreign or unfamiliar objects hanging down or wedged underneath.

Also, check to see if there are any puddles of vehicle fluids under the vehicle. If the vehicle is leaking fluid, report it to the Transit Coordinator.

Move to the front of the vehicle and examine the right front tire in the same manner as the left tire and check the condition of the side marker light.

Adjust each mirror so that you can see what you need to see from your normal driving position. When adjusting mirrors, keep in mind what you want to be able to see within your safety zone.

Test the horn to make sure it works.

Turn the steering wheel gently to make sure it is not loose.

Depress the brake pedal. If the tension feels spongy or soft, note this on your checklist, the brakes may need to be adjusted.

Check the blower fan to verify it works so the heater, defroster or air conditioner can all be utilized.

Check the interior lights. If any lights are not working, note this on the checklist.

Note on your checklist anything in the interior of the vehicle that needs attention.

Safety Equipment

Check your emergency equipment to make sure it is in the right location and in working order.

Emergency equipment should include:

- A properly charged fire extinguisher
- Warning devices such as cones, triangles, flares
- A first aid kit
- Extra fuses
- A flashlight with fresh batteries
- Blood Borne Pathogens Kit

Look around the inside of your vehicle to make sure it is clean. Clear out trash, debris or loose items. Trash or debris left in the vehicle can be tossed about by careless passengers and can cause slips, falls and fires. A clean vehicle presents a professional image.

Check any special accessibility equipment if your vehicle is so equipped.

Examine tie downs for signs of damage or excessive wear. Make sure they can be properly secured to the floor.

Check all lifts and ramps by operating them through one complete cycle. Make sure they are functioning properly. (You may have to move the vehicle to ensure proper clearance while performing this part of the inspection.)

Make sure all doors and emergency exits are functional and unobstructed.

PRE/POST-TRIP INSPECTION WORKSHEET

Date: _____

Vehicle: _____

Mileage: _____ Maintenance Due Date: _____ Wheelchair
Lift Cycles: _____

UNDERHOOD

- Oil level
- Oil added _____ quarts
- Radiator level
- Battery level
- Windshield washer fluid level
- Engine/hoses/belts

EXTERIOR

- Tires
- Turn signals
- Headlights
- Tail/brake lights
- Windshield wipers
- Fresh body damage
- Cleanliness
- Cycle lift (light oil every 2 wks.)

ACCESSIBILITY EQUIPMENT

- Fully operable wheelchair lift
- Proper number of belts/securement devices in good condition

SAFETY EQUIPMENT

- Fire extinguisher
- Web cutter
- Triangles
- First Aid Kit
- Back-up alarm
- Rear door buzzer (LTV only)
- Blood borne Pathogen Kit

INTERIOR

- Brakes
- Steering
- Transmission
- Mirrors
- Gauge/instruments
- Controls (equipment)
- Radio (two-way)
- Damage/cleanliness

- Wheelchair lift ramp
- Belts/securement devices in good condition

Notes: _____

Operator Name & Signature: _____

Management Comments:

Management Signature:

MAINTENANCE REPAIR REQUEST FORM

VAN # _____ **MILEAGE** _____

Air Conditioner: _____

Belts & Hoses: _____

Brakes: _____

Battery: _____

Oil Change (Last Oil Change Mileage): _____

Lights: _____

Wheelchair Lift: _____

Radiator: _____

Transmission: _____

Tires: _____

Other: _____

Driver _____

Date in Garage _____

Date _____

Date out of Garage _____

PREVENTATIVE MAINTENANCE

Preventive maintenance is a term used to describe the performance of regularly scheduled maintenance procedures of Gaston County ACCESS vehicles to prevent the possibility of malfunctions.

Gaston County Fleet Maintenance will maintain all Gaston County ACCESS vehicles and wheelchair lifts in the best possible operational condition. This will be accomplished by adhering to and/or exceeding the manufacturer's recommended minimum maintenance requirements.

MAINTENANCE SCHEDULE

Each Gaston County ACCESS vehicle is assigned a number by the Transportation Coordinator, which is affixed to each vehicle in a visible location along with the phone number of the Gaston County ACCESS office.

Preventative Vehicle Maintenance Schedule

All vehicles will have a preventative maintenance service and inspection at established intervals. (See attachment 1, Vehicle Preventative Maintenance Service Schedule)

Wheelchair lift Preventative Maintenance Schedule

All wheelchair lifts will have a preventative maintenance service and inspection at established intervals. (See attachment 2, Wheelchair Lift Preventative Maintenance Service Schedule)

Unscheduled Vehicle Maintenance

First Transit will ensure all maintenance is performed to meet manufacturer's specification. (See attachment 3, Vehicle/Wheelchair Lift Maintenance Request)

DAILY INSPECTION

Pre/Post-Trip inspections are crucial to the success of each transit system's Preventative Maintenance Program. Each driver will inspect his or her vehicle before leaving the parking lot by completing the Pre-Trip Vehicle Inspection Form. The completed checklist must be submitted to the Lead Driver at the end of the driver's shift to maintain a record inspection. At the end of each driver's assigned shift, the driver must also complete a Post-trip Inspection Sheet, found on the back of the Pre-trip Inspection Sheet. Drivers must sign each Pre-trip and Post-trip checklist for each vehicle used that day. The Lead Driver will review each Pre-trip and Post-Trip inspection sheets daily, schedule any required or necessary maintenance, and sign off on each sheet. (See attachment 4, Pre/Post-Trip Checklist)

MANAGEMENT REVIEWS

There must be an effective mechanism to monitor and document the contractor's maintenance activities. An acceptable program would consist of periodic written reports on maintenance activities submitted by the contractor to the grantee, supplemented by periodic inspections by the grantee. The grantee must provide oversight in order to verify the contractor's compliance with FTA and NCDOT regulations and polices.

DRUG AND ALCOHOL POLICY

6/22/21

DRUG AND ALCOHOL TESTING POLICY
GASTON COUNTY ACCESS
Adopted as of 06/22/21

A. PURPOSE

- 1) The GASTON COUNTY ACCESS provides public transit and paratransit services for the residents of Gaston County. Part of our mission is to ensure that this service is delivered safely, efficiently, and effectively by establishing a drug and alcohol-free work environment, and to ensure that the workplace remains free from the effects of drugs and alcohol in order to promote the health and safety of employees and the general public. In keeping with this mission, GASTON COUNTY ACCESS declares that the unlawful manufacture, distribution, dispense, possession, or use of controlled substances or misuse of alcohol is prohibited for all employees.
- 2) Additionally, the purpose of this policy is to establish guidelines to maintain a drug and alcohol-free workplace in compliance with the Drug-Free Workplace Act of 1988, and the Omnibus Transportation Employee Testing Act of 1991. This policy is intended to comply with all applicable Federal regulations governing workplace anti-drug and alcohol programs in the transit industry. Specifically, the Federal Transit Administration (FTA) of the U.S. Department of Transportation has published 49 CFR Part 655, as amended, that mandates urine drug testing and breath alcohol testing for safety-sensitive positions, and prohibits performance of safety-sensitive functions when there is a positive test result, or a refusal to test. The U. S. Department of Transportation (USDOT) has also published 49 CFR Part 40, as amended, that sets standards for the collection and testing of urine and breath specimens.
- 3) Any provisions set forth in this policy that are included under the sole authority of GASTON COUNTY ACCESS and are not provided under the authority of the above named Federal regulations are underlined. Tests conducted under the sole authority of GASTON COUNTY ACCESS will be performed on non-USDOT forms and will be separate from USDOT testing in all respects.

B. APPLICABILITY

This Drug and Alcohol Testing Policy applies to all safety-sensitive employees (full- or part-time) when performing safety sensitive duties. See Attachment A for a list of employees and the authority under which they are included.

A safety-sensitive function is operation of public transit service including the operation of a revenue service vehicle (whether or not the vehicle is in revenue service), maintenance of a revenue service vehicle or equipment used in revenue

service, security personnel who carry firearms, dispatchers or persons controlling the movement of revenue service vehicles and any transit employee who operates a non-revenue service vehicle that requires a Commercial Driver's License to operate. Maintenance functions include the repair, overhaul, and rebuild of engines, vehicles and/or equipment used in revenue service. A list of safety-sensitive positions who perform one or more of the above mentioned duties is provided in Attachment A. Supervisors are only safety sensitive if they perform one of the above functions. Volunteers are considered safety sensitive and subject to testing if they are required to hold a CDL, or receive remuneration for service in excess of actual expense.

C. DEFINITIONS

Accident: An occurrence associated with the operation of a vehicle even when not in revenue service, if as a result:

- a. An individual dies;
- b. An individual suffers a bodily injury and immediately receives medical treatment away from the scene of the accident; or,
- c. One or more vehicles incur disabling damage as the result of the occurrence and is transported away from the scene by a tow truck or other vehicle. For purposes of this definition, *disabling damage* means damage which precludes departure of any vehicle from the scene of the occurrence in its usual manner in daylight after simple repairs. Disabling damage includes damage to vehicles that could have been operated but would have been further damaged if so operated, but does not include damage which can be remedied temporarily at the scene of the occurrence without special tools or parts, tire disablement without other damage even if no spare tire is available, or damage to headlights, taillights, turn signals, horn, or windshield wipers that makes them inoperative.

Adulterated specimen: A specimen that has been altered, as evidenced by test results showing either a substance that is not a normal constituent for that type of specimen or showing an abnormal concentration of an endogenous substance.

Alcohol: The intoxicating agent in beverage alcohol, ethyl alcohol, or other low molecular weight alcohols contained in any beverage, mixture, mouthwash, candy, food, preparation or medication.

Alcohol Concentration: Expressed in terms of grams of alcohol per 210 liters of breath as indicated by a breath test under 49 CFR Part 40.

Aliquot: A fractional part of a specimen used for testing, It is taken as a sample representing the whole specimen.

Canceled Test: A drug or alcohol test that has a problem identified that cannot be or has not been corrected, or which is cancelled. A canceled test is neither positive nor negative.

Confirmatory Drug Test: A second analytical procedure performed on a different aliquot of the original specimen to identify and quantify the presence of a specific drug or metabolite.

Confirmatory Validity Test: A second test performed on a different aliquot of the original urine specimen to further support a validity test result.

Covered Employee Under FTA Authority: An employee who performs a safety-sensitive function including an applicant or transferee who is being considered for hire into a safety-sensitive function (See Attachment A for a list of covered employees).

Designated Employer Representative (DER): An employee authorized by the employer to take immediate action to remove employees from safety-sensitive duties and to make required decisions in testing. The DER also receives test results and other communications for the employer, consistent with the requirements of 49 CFR Parts 40 and 655.

DOT, The Department, DOT Agency: These terms encompass all DOT agencies, including, but not limited to, the Federal Aviation Administration (FAA), the Federal Railroad Administration (FRA), the Federal Motor Carrier Safety Administration (FMCSA), the Federal Transit Administration (FTA), the National Highway Traffic Safety Administration (NHTSA), the Pipeline and Hazardous Materials Safety Administration (PHMSA), and the Office of the Secretary (OST). For purposes of 49 CFR Part 40, the United States Coast Guard (USCG), in the Department of Homeland Security, is considered to be a DOT agency for drug testing purposes. These terms include any designee of a DOT agency.

Dilute specimen: A urine specimen with creatinine and specific gravity values that are lower than expected for human urine.

Disabling damage: Damage which precludes departure of any vehicle from the scene of the occurrence in its usual manner in daylight after simple repairs. Disabling damage includes damage to vehicles that could have been operated but would have been further damaged if so operated, but does not include damage which can be remedied temporarily at the scene of the occurrence without special tools or parts, tire disablement without other damage even if no spare tire is available, or damage to headlights, taillights, turn signals, horn, or windshield wipers that makes them inoperative.

Evidentiary Breath Testing Device (EBT): A device approved by the NHTSA for the evidential testing of breath at the 0.02 and the 0.04 alcohol concentrations, and

appears on ODAPC's Web page for "Approved Evidential Breath Measurement Devices" because it conforms with the model specifications available from NHTSA.

Initial Drug Test: (Screening Drug Test) The test used to differentiate a negative specimen from one that requires further testing for drugs or drug metabolites.

Initial Specimen Validity Test: The first test used to determine if a urine specimen is adulterated, diluted, substituted, or invalid

Invalid Result: The result reported by an HHS-certified laboratory in accordance with the criteria established by the HHS Mandatory Guidelines when a positive, negative, adulterated, or substituted result cannot be established for a specific drug or specimen validity test.

Laboratory: Any U.S. laboratory certified by HHS under the National Laboratory Certification program as meeting standards of Subpart C of the HHS Mandatory Guidelines for Federal Workplace Drug Testing Programs; or, in the case of foreign laboratories, a laboratory approved for participation by DOT under this part.

Limit of Detection (LOD): The lowest concentration at which a measure and can be identified, but (for quantitative assays) the concentration cannot be accurately calculated.

Limit of Quantitation: For quantitative assays, the lowest concentration at which the identity and concentration of the measure and can be accurately established.

Medical Review Officer (MRO): A licensed physician (medical doctor or doctor of osteopathy) responsible for receiving laboratory results generated by the drug testing program who has knowledge of substance abuse disorders, and has appropriate medical training to interpret and evaluate an individual's confirmed positive test result, together with his/her medical history, and any other relevant bio-medical information.

Negative Dilute: A drug test result which is negative for the five drug/drug metabolites but has creatinine and specific gravity values that are lower than expected for human urine.

Negative result: The result reported by an HHS-certified laboratory to an MRO when a specimen contains no drug or the concentration of the drug is less than the cutoff concentration for the drug or drug class and the specimen is a valid specimen. An alcohol concentration of less than 0.02 BAC is a negative test result.

Non-negative test result: A urine specimen that is reported as adulterated, substituted, invalid, or positive for drug/drug metabolites.

Oxidizing Adulterant: A substance that acts alone or in combination with other substances to oxidize drugs or drug metabolites to prevent the detection of the drug or metabolites, or affects the reagents in either the initial or confirmatory drug test.

Performing (a safety-sensitive function): A covered employee is considered to be performing a safety-sensitive function and includes any period in which he or she is actually performing, ready to perform, or immediately available to perform such functions.

Positive result: The result reported by an HHS- Certified laboratory when a specimen contains a drug or drug metabolite equal or greater to the cutoff concentrations.

Prohibited drug: Identified as marijuana, cocaine, opioids, amphetamines, or phencyclidine as specified in 49 CFR Part 40, as amended.

Reconfirmed: The result reported for a split specimen when the second laboratory is able to corroborate the original result reported for the primary specimen.

Rejected for Testing: The result reported by an HHS- Certified laboratory when no tests are performed for specimen because of a fatal flaw or a correctable flaw that has not been corrected.

Revenue Service Vehicles: All transit vehicles that are used for passenger transportation service.

Safety-sensitive functions: Employee duties identified as:

- (1) The operation of a transit revenue service vehicle even when the vehicle is not in revenue service.
- (2) The operation of a non-revenue service vehicle by an employee when the operation of such a vehicle requires the driver to hold a Commercial Drivers License (CDL).
- (3) Maintaining a revenue service vehicle or equipment used in revenue service.
- (4) Controlling the movement of a revenue service vehicle and
- (5) Carrying a firearm for security purposes.

Split Specimen Collection: A collection in which the urine collected is divided into two separate bottles, the primary specimen (Bottle A) and the split specimen (Bottle B).

Substance Abuse Professional (SAP): A licensed physician (medical doctor or doctor of osteopathy) or licensed or certified psychologist, social worker, employee assistance professional, state-licensed or certified marriage and family therapist, or drug and alcohol counselor (certified by an organization listed at

<https://www.transportation.gov/odapc/sap>) with knowledge of and clinical experience in the diagnosis and treatment of drug and alcohol related disorders.

Substituted specimen: A urine specimen with creatinine and specific gravity values that are so diminished or so divergent that they are not consistent with normal human urine.

Test Refusal: The following are considered a refusal to test if the employee:

- (1) Fail to appear for any test (except a pre-employment test) within a reasonable time, as determined by the employer.
- (2) Fail to remain at the testing site until the testing process is complete. An employee who leaves the testing site before the testing process commences for a pre-employment test has not refused to test.
- (3) Fail to attempt to provide a breath or urine specimen. An employee who does not provide a urine or breath specimen because he or she has left the testing site before the testing process commenced for a pre-employment test has not refused to test.
- (4) In the case of a directly-observed or monitored urine drug collection, fail to permit monitoring or observation of your provision of a specimen.
- (5) Fail to provide a sufficient quantity of urine or breath without a valid medical explanation.
- (6) Fail or decline to take a second test as directed by the collector or the employer for drug testing.
- (7) Fail to undergo a medical evaluation as required by the MRO or the employer's Designated Employer Representative (DER).
- (8) Fail to cooperate with any part of the testing process.
- (9) Fail to follow an observer's instructions to raise and lower clothing and turn around during a directly-observed test.
- (10) Possess or wear a prosthetic or other device used to tamper with the collection process.
- (11) Admit to the adulteration or substitution of a specimen to the collector or MRO.
- (12) Refuse to sign the certification at Step 2 of the Alcohol Testing Form (ATF).
- (13) Fail to remain readily available following an accident.
- (14) As a covered employee, if the MRO reports that you have a verified adulterated or substituted test result, you have refused to take a drug test.

Vehicle: A bus, electric bus, van, automobile, rail car, trolley car, trolley bus, or vessel. A public transit vehicle is a vehicle used for public transportation or for ancillary services.

Verified negative test: A drug test result reviewed by a medical review officer and determined to have no evidence of prohibited drug use at or above the minimum cutoff levels established by the Department of Health and Human Services (HHS).

Verified positive test: A drug test result reviewed by a medical review officer and determined to have evidence of prohibited drug use at or above the minimum cutoff levels specified in 49 CFR Part 40 as revised.

Validity testing: The evaluation of the specimen to determine if it is consistent with normal human urine. Specimen validity testing will be conducted on all urine specimens provided for testing under DOT authority. The purpose of validity testing is to determine whether certain adulterants or foreign substances were added to the urine, if the urine was diluted, or if the specimen was substituted.

D. EDUCATION AND TRAINING

- 1) Every covered employee will receive a copy of this policy and will have ready access to the corresponding federal regulations including 49 CFR Parts 655 and 40, as amended. In addition, all covered employees will undergo a minimum of 60 minutes of training on the signs and symptoms of drug use including the effects and consequences of drug use on personal health, safety, and the work environment. The training also includes manifestations and behavioral cues that may indicate prohibited drug use.
- 2) All supervisory personnel or company officials who are in a position to determine employee fitness for duty will receive 60 minutes of reasonable suspicion training on the physical, behavioral, and performance indicators of probable drug use and 60 minutes of additional reasonable suspicion training on the physical, behavioral, speech, and performance indicators of probable alcohol misuse.

E. PROHIBITED SUBSTANCES

- 1) Prohibited substances addressed by this policy include the following.
 - a. Illegally Used Controlled Substance or Drugs Under the Drug-Free Workplace Act of 1988 any drug or any substance identified in Schedule I through V of Section 202 of the Controlled Substance Act (21 U.S.C. 812), and as further defined by 21 CFR 1308.11 through 1308.15 is prohibited at all times in the workplace unless a legal prescription has been written for the substance. This includes, but is not limited to: marijuana, amphetamines, opioids, phencyclidine (PCP), and cocaine, as well as any drug not approved for medical use by the U.S. Drug Enforcement Administration or the U.S. Food and Drug Administration. Illegal use includes use of any illegal drug, misuse of legally prescribed drugs, and use of illegally obtained prescription drugs. It is important to note that the use of marijuana in any circumstances remains completely prohibited for any safety-sensitive employee subject to drug testing under USDOT regulations. The use of marijuana in any circumstance

(including under state recreational and/or medical marijuana laws) by a safety-sensitive employee is a violation of this policy and a violation of the USDOT regulation 49 CFR Part 40, as amended.

Federal Transit Administration drug testing regulations (49 CFR Part 655) require that all employees covered under FTA authority be tested for marijuana, cocaine, amphetamines, opioids, and phencyclidine as described in this policy. Illegal use of these five drugs is prohibited at all times and thus, covered employees may be tested for these drugs anytime that they are on duty.

- b. Legal Drugs: The appropriate use of legally prescribed drugs and non-prescription medications is not prohibited. However, the use of any substance which carries a warning label that indicates that mental functioning, motor skills, or judgment may be adversely affected must be reported to a GASTON COUNTY ACCESS supervisor and the employee is required to provide a written release from his/her doctor or pharmacist indicating that the employee can perform his/her safety-sensitive functions.
- c. Alcohol: The use of beverages containing alcohol (including mouthwash, medication, food, candy) or any other substances containing alcohol in a manner which violates the conduct listed in this policy is prohibited.

F. PROHIBITED CONDUCT

- 1) Illegal use of the drugs listed in this policy and as defined in 49 CFR Part 40, as amended is prohibited at all times. All covered employees are prohibited from reporting for duty or remaining on duty if they have used a prohibited drug as defined in 49 CFR Part 40, as amended.
- 2) Each covered employee is prohibited from consuming alcohol while performing safety-sensitive job functions or while on-call to perform safety-sensitive job functions. If an on-call employee has consumed alcohol, they must acknowledge the use of alcohol at the time that they are called to report for duty. The covered employee will subsequently be relieved of his/her on-call responsibilities and subject to discipline for not fulfilling his/her on-call responsibilities.
- 3) The Transit Department shall not permit any covered employee to perform or continue to perform safety-sensitive functions if it has actual knowledge that the employee is using alcohol
- 4) Each covered employee is prohibited from reporting to work or remaining on duty requiring the performance of safety-sensitive functions while having

an alcohol concentration of 0.04 or greater regardless of when the alcohol was consumed.

- a. An employee with a breath alcohol concentration which measures 0.02-0.039 is not considered to have violated the USDOT-FTA drug and alcohol regulations, provided the employee hasn't consumed the alcohol within four (4) hours of performing a safety-sensitive duty. However, if a safety-sensitive employee has a breath alcohol concentration of 0.02-0.039, USDOT-FTA regulations require the employee to be removed from the performance of safety-sensitive duties until:
 - i. The employee's alcohol concentration measures less than 0.02; or
 - ii. The start of the employee's next regularly scheduled duty period, but not less than eight hours following administration of the test.
- 5) No covered employee shall consume alcohol for eight (8) hours following involvement in an accident or until he/she submits to the post-accident drug/alcohol test, whichever occurs first.
- 6) No covered employee shall consume alcohol within four (4) hours prior to the performance of safety-sensitive job functions.
- 7) GASTON COUNTY ACCESS , under its own authority, also prohibits the consumption of alcohol at all times the employee is on duty, or anytime the employee is in uniform.
- 8) Consistent with the Drug-free Workplace Act of 1988, all GASTON COUNTY ACCESS employees are prohibited from engaging in the unlawful manufacture, distribution, dispensing, possession, or use of prohibited substances in the work place including transit system premises and transit vehicles.

G. DRUG STATUTE CONVICTION

Consistent with the Drug Free Workplace Act of 1998, all employees are required to notify the GASTON COUNTY ACCESS management of any criminal drug statute conviction for a violation occurring in the workplace within five days after such conviction. Failure to comply with this provision shall result in disciplinary action as defined in Section Q of this policy.

H. TESTING REQUIREMENTS

- 1) Analytical urine drug testing and breath testing for alcohol will be conducted as required by 49 CFR Part 40 as amended. All employees covered under FTA authority shall be subject to testing prior to performing safety-sensitive duty, for reasonable suspicion, following an accident, and random as defined in Section K, L, M, and N of this policy, and return to duty/follow-up.
- 2) A drug test can be performed any time a covered employee is on duty. A reasonable suspicion, random, or follow-up alcohol test can only be performed just before, during, or after the performance of a safety-sensitive job function. Under GASTON COUNTY ACCESS authority, a non-DOT alcohol test can be performed any time a covered employee is on duty.
- 3) All covered employees will be subject to urine drug testing and breath alcohol testing as a condition of ongoing employment with GASTON COUNTY ACCESS . Any safety-sensitive employee who refuses to comply with a request for testing shall be removed from duty and subject to discipline as defined in Section Q of this policy.

I. DRUG TESTING PROCEDURES

- 1) Testing shall be conducted in a manner to assure a high degree of accuracy and reliability and using techniques, equipment, and laboratory facilities which have been approved by the U.S. Department of Health and Human Service (HHS). All testing will be conducted consistent with the procedures set forth in 49 CFR Part 40, as amended. The procedures will be performed in a private, confidential manner and every effort will be made to protect the employee, the integrity of the drug testing procedure, and the validity of the test result.
- 2) The drugs that will be tested for include marijuana, cocaine, opioids, amphetamines, and phencyclidine. After the identity of the donor is checked using picture identification, a urine specimen will be collected using the split specimen collection method described in 49 CFR Part 40, as amended. Each specimen will be accompanied by a DOT Custody and Control Form and identified using a unique identification number that attributes the specimen to the correct individual. The specimen analysis will be conducted at a HHS certified laboratory. An initial drug screen and validity test will be conducted on the primary urine specimen. For those specimens that are not negative, a confirmatory Gas Chromatography/Mass Spectrometry (GC/MS) or Liquid Chromatography/Mass Spectrometry (LC/MS) test will be performed. The test will be considered positive if the amounts of the drug(s) and/or its metabolites identified by the GC/MS or LC/MS test are above the minimum thresholds established in 49 CFR Part 40, as amended.

- 3) The test results from the HHS certified laboratory will be reported to a Medical Review Officer. A Medical Review Officer (MRO) is a licensed physician with detailed knowledge of substance abuse disorders and drug testing. The MRO will review the test results to ensure the scientific validity of the test and to determine whether there is a legitimate medical explanation for a confirmed positive, substitute, or adulterated test result. The MRO will attempt to contact the employee to notify the employee of the non-negative laboratory result, and provide the employee with an opportunity to explain the confirmed laboratory test result. The MRO will subsequently review the employee's medical history/medical records as appropriate to determine whether there is a legitimate medical explanation for a non-negative laboratory result. If no legitimate medical explanation is found, the test will be verified positive or refusal to test and reported to GASTON COUNTY ACCESS . If a legitimate explanation is found, the MRO will report the test result as negative.
- 4) If the test is invalid without a medical explanation, a retest will be conducted under direct observation. Employees do not have access to a test of their split specimen following an invalid result.
- 5) Any covered employee who questions the results of a required drug test may request that the split sample be tested. The split sample test must be conducted at a second HHS-certified laboratory. The test must be conducted on the split sample that was provided by the employee at the same time as the primary sample. The method of collecting, storing, and testing the split sample will be consistent with the procedures set forth in 49 CFR Part 40, as amended. The employee's request for a split sample test must be made to the Medical Review Officer within 72 hours of notice of the original sample verified test result. Requests after 72 hours will only be accepted at the discretion of the MRO if the delay was due to documentable facts that were beyond the control of the employee. GASTON COUNTY ACCESS will ensure that the cost for the split specimen analysis is covered in order for a timely analysis of the sample, however GASTON COUNTY ACCESS will seek reimbursement for the split sample test from the employee.
- 6) If the analysis of the split specimen fails to confirm the presence of the drug(s) detected in the primary specimen, if the split specimen is not able to be analyzed, or if the results of the split specimen are not scientifically adequate, the MRO will declare the original test to be canceled.
- 7) The split specimen will be stored at the initial laboratory until the analysis of the primary specimen is completed. If the primary specimen is negative, the split will be discarded. If the primary specimen is positive, it will be retained in frozen storage for one year and the split specimen will also be

retained for one year. If the primary is positive, the primary and the split will be retained for longer than one year for testing if so requested by the employee through the Medical Review Officer, or by the employer, by the MRO, or by the relevant DOT agency.

8) Observed collections

- a. Consistent with 49 CFR Part 40, as amended, collection under direct observation (by a person of the same gender) with no advance notice will occur if:
 - i. The laboratory reports to the MRO that a specimen is invalid, and the MRO reports to GASTON COUNTY ACCESS that there was not an adequate medical explanation for the result;
 - ii. The MRO reports to GASTON COUNTY ACCESS that the original positive, adulterated, or substituted test result had to be cancelled because the test of the split specimen could not be performed;
 - iii. The laboratory reported to the MRO that the specimen was negative-dilute with a creatinine concentration greater than or equal to 2 mg/dL but less than or equal to 5 mg/dL, and the MRO reported the specimen as negative-dilute and that a second collection must take place under direct observation (see §40.197(b)(1)).
 - iv. The collector observes materials brought to the collection site or the employee's conduct clearly indicates an attempt to tamper with a specimen;
 - v. The temperature on the original specimen was out of range;
 - vi. Anytime the employee is directed to provide another specimen because the original specimen appeared to have been tampered with.
 - vii. All follow-up-tests; or
 - viii. All return-to-duty tests

J. ALCOHOL TESTING PROCEDURES

- 1) Tests for breath alcohol concentration will be conducted utilizing a National Highway Traffic Safety Administration (NHTSA)-approved Evidential Breath

Testing device (EBT) operated by a trained Breath Alcohol Technician (BAT). A list of approved EBTs can be found on ODAPC's Web page for "Approved Evidential Breath Measurement Devices". Alcohol screening tests may be performed using a non-evidential testing device (alcohol screening device (ASD)) which is also approved by NHTSA. A list of approved ASDs can be found on ODAPC's Web page for "Approved Screening Devices to Measure Alcohol in Bodily Fluids". If the initial test indicates an alcohol concentration of 0.02 or greater, a second test will be performed to confirm the results of the initial test. The confirmatory test must occur on an EBT. The confirmatory test will be conducted no sooner than fifteen minutes after the completion of the initial test. The confirmatory test will be performed using a NHTSA-approved EBT operated by a trained BAT. The EBT will identify each test by a unique sequential identification number. This number, time, and unit identifier will be provided on each EBT printout. The EBT printout, along with an approved alcohol testing form, will be used to document the test, the subsequent results, and to attribute the test to the correct employee. The test will be performed in a private, confidential manner as required by 49 CFR Part 40, as amended. The procedure will be followed as prescribed to protect the employee and to maintain the integrity of the alcohol testing procedures and validity of the test result.

- 2) A confirmed alcohol concentration of 0.04 or greater will be considered a positive alcohol test and in violation of this policy. The consequences of a positive alcohol test are described in Section Q. of this policy. Even though an employee who has a confirmed alcohol concentration of 0.02 to 0.039 is not considered positive, the employee shall still be removed from duty for at least eight hours or for the duration of the work day whichever is longer and will be subject to the consequences described in Section Q of this policy. An alcohol concentration of less than 0.02 will be considered a negative test.
- 3) GASTON COUNTY ACCESS affirms the need to protect individual dignity, privacy, and confidentiality throughout the testing process. If at any time the integrity of the testing procedures or the validity of the test results is compromised, the test will be canceled. Minor inconsistencies or procedural flaws that do not impact the test result will not result in a cancelled test.
- 4) The alcohol testing form (ATF) required by 49 CFR Part 40 as amended, shall be used for all FTA required testing. Failure of an employee to sign step 2 of the ATF will be considered a refusal to submit to testing.

K. PRE-EMPLOYMENT TESTING

- 1) All applicants for covered transit positions shall undergo urine drug testing prior to performance of a safety-sensitive function.
 - a. All offers of employment for covered positions shall be extended conditional upon the applicant passing a drug test. An applicant will not be allowed to perform safety-sensitive functions unless the applicant takes a drug test with verified negative results.
 - b. An employee shall not be placed, transferred or promoted into a position covered under FTA authority or company authority until the employee takes a drug test with verified negative results.
 - c. If an applicant fails a pre-employment drug test, the conditional offer of employment shall be rescinded and the applicant will be provided with a list of at least two (2) USDOT qualified Substance Abuse Professionals. Failure of a pre-employment drug test will disqualify an applicant for employment for a period of at least one year. Before being considered for future employment the applicant must provide the employer proof of having successfully completed a referral, evaluation and treatment plan as described in section 655.62 of subpart G. The cost for the assessment and any subsequent treatment will be the sole responsibility of the applicant.
 - d. When an employee being placed, transferred, or promoted from a non-covered position to a position covered under FTA authority or company authority submits a drug test with a verified positive result, the employee shall be subject to disciplinary action in accordance with Section Q herein.
 - e. If a pre-employment test is canceled, GASTON COUNTY ACCESS will require the applicant to take and pass another pre-employment drug test.
 - f. In instances where a FTA covered employee does not perform a safety-sensitive function for a period of 90 consecutive days or more regardless of reason, and during that period is not in the random testing pool the employee will be required to take a pre-employment drug test under 49 CFR Part 655 and have negative test results prior to the conduct of safety-sensitive job functions.
 - g. Following a negative dilute the employee will be required to undergo another test. Should this second test result in a negative dilute result, the test will be considered a negative and no additional testing will be required unless directed to do so by the MRO.

- h. Applicants are required (even if ultimately not hired) to provide *GASTON COUNTY ACCESS* with signed written releases requesting USDOT drug and alcohol records from all previous, USDOT-covered, employers that the applicant has worked for within the last two years. Failure to do so will result in the employment offer being rescinded. *GASTON COUNTY ACCESS* is required to ask all applicants (even if ultimately not hired) if they have tested positive or refused to test on a pre-employment test for a USDOT covered employer within the last two years. If the applicant has tested positive or refused to test on a pre-employment test for a USDOT covered employer, the applicant must provide *GASTON COUNTY ACCESS* proof of having successfully completed a referral, evaluation and treatment plan as described in section 655.62 of subpart G.

L. REASONABLE SUSPICION TESTING

- 1) All *GASTON COUNTY ACCESS* FTA covered employees will be subject to a reasonable suspicion drug and/or alcohol test when the employer has reasonable suspicion to believe that the covered employee has used a prohibited drug and/or engaged in alcohol misuse. Reasonable suspicion shall mean that there is objective evidence, based upon specific, contemporaneous, articulable observations of the employee's appearance, behavior, speech or body odor that are consistent with possible drug use and/or alcohol misuse. Reasonable suspicion referrals must be made by one or more supervisors who are trained to detect the signs and symptoms of drug and alcohol use, and who reasonably concludes that an employee may be adversely affected or impaired in his/her work performance due to possible prohibited substance abuse or alcohol misuse. A reasonable suspicion alcohol test can only be conducted just before, during, or just after the performance of a safety-sensitive job function. However, under *GASTON COUNTY ACCESS* ' authority, a non-DOT reasonable suspicion alcohol test may be performed any time the covered employee is on duty. A reasonable suspicion drug test can be performed any time the covered employee is on duty.
- 2) *GASTON COUNTY ACCESS* shall be responsible for transporting the employee to the testing site. Supervisors should avoid placing themselves and/or others into a situation which might endanger the physical safety of those present. The employee shall be placed on administrative leave pending disciplinary action described in Section Q of this policy. An employee who refuses an instruction to submit to a drug/alcohol test shall not be permitted to finish his or her shift and shall immediately be placed on administrative leave pending disciplinary action as specified in Section Q of this policy.

- 3) A written record of the observations which led to a drug/alcohol test based on reasonable suspicion shall be prepared and signed by the supervisor making the observation. This written record shall be submitted to the GASTON COUNTY ACCESS
- 4) When there are no specific, contemporaneous, articulable objective facts that indicate current drug or alcohol use, but the employee (who is not already a participant in a treatment program) admits the abuse of alcohol or other substances to a supervisor in his/her chain of command, the employee shall be referred for assessment and treatment consistent with Section Q of this policy. GASTON COUNTY ACCESS shall place the employee on administrative leave in accordance with the provisions set forth under Section Q of this policy. Testing in this circumstance would be performed under the direct authority of the GASTON COUNTY ACCESS. Since the employee self-referred to management, testing under this circumstance would not be considered a violation of this policy or a positive test result under Federal authority. However, self-referral does not exempt the covered employee from testing under Federal authority as specified in Sections L through N of this policy or the associated consequences as specified in Section Q.

M. POST-ACCIDENT TESTING

- 1) FATAL ACCIDENTS – A covered employee will be required to undergo urine and breath testing if they are involved in an accident with a transit vehicle, whether or not the vehicle is in revenue service at the time of the accident, that results in a fatality. This includes all surviving covered employees that are operating the vehicle at the time of the accident and any other whose performance could have contributed to the accident, as determined by the employer using the best information available at the time of the decision.
- 2) NON-FATAL ACCIDENTS – A post-accident test of the employee operating the public transportation vehicle will be conducted if an accident occurs and at least one of the following conditions is met:
 - a. The accident results in injuries requiring immediate medical treatment away from the scene, unless the covered employee can be completely discounted as a contributing factor to the accident.
 - b. One or more vehicles incurs disabling damage as a result of the occurrence and must be transported away from the scene, unless the covered employee can be completely discounted as a contributing factor to the accident

In addition, any other covered employee whose performance could have contributed to the accident, as determined by the employer using the best information available at the time of the decision, will be tested.

As soon as practicable following an accident, as defined in this policy, the transit supervisor investigating the accident will notify the transit employee operating the transit vehicle and all other covered employees whose performance could have contributed to the accident of the need for the test. The supervisor will make the determination using the best information available at the time of the decision.

The appropriate transit supervisor shall ensure that an employee, required to be tested under this section, is tested as soon as practicable, but no longer than eight (8) hours of the accident for alcohol, and no longer than 32 hours for drugs. If an alcohol test is not performed within two hours of the accident, the Supervisor will document the reason(s) for the delay. If the alcohol test is not conducted within (8) eight hours, or the drug test within 32 hours, attempts to conduct the test must cease and the reasons for the failure to test documented.

Any covered employee involved in an accident must refrain from alcohol use for eight (8) hours following the accident, or until he/she undergoes a post-accident alcohol test.

An employee who is subject to post-accident testing who fails to remain readily available for such testing, including notifying a supervisor of his or her location if he or she leaves the scene of the accident prior to submission to such test, may be deemed to have refused to submit to testing.

Nothing in this section shall be construed to require the delay of necessary medical attention for the injured following an accident, or to prohibit an employee from leaving the scene of an accident for the period necessary to obtain assistance in responding to the accident, or to obtain necessary emergency medical care.

In the rare event that GASTON COUNTY ACCESS is unable to perform an FTA drug and alcohol test (i.e., employee is unconscious, employee is detained by law enforcement agency), GASTON COUNTY ACCESS may use drug and alcohol post-accident test results administered by local law enforcement officials in lieu of the FTA test. The local law enforcement officials must have independent authority for the test and the employer must obtain the results in conformance with local law.

N. RANDOM TESTING

- 1) All covered employees will be subjected to random, unannounced testing. The selection of employees shall be made by a scientifically valid method of randomly generating an employee identifier from the appropriate pool of safety-sensitive employees. Employees who may be covered under company authority will be selected from a pool of non-DOT-covered employees.
- 2) The dates for administering unannounced testing of randomly selected employees shall be spread reasonably throughout the calendar year, day of the week and hours of the day.
- 3) The number of employees randomly selected for drug/alcohol testing during the calendar year shall be not less than the percentage rates set each year by the FTA administrator. The current year testing rates can be viewed online at <https://www.transportation.gov/odapc/random-testing-rates>.
- 4) Each covered employee shall be in a pool from which the random selection is made. Each covered employee in the pool shall have an equal chance of selection each time the selections are made. Employees will remain in the pool and subject to selection, whether or not the employee has been previously tested. There is no discretion on the part of management in the selection.
- 5) Covered transit employees that fall under the Federal Transit Administration regulations will be included in one random pool maintained separately from the testing pool of non-safety-sensitive employees that are included solely under GASTON COUNTY ACCESS authority.
- 6) Random tests can be conducted at any time during an employee's shift for drug testing. Alcohol random tests can only be performed just before, during, or just after the performance of a safety sensitive duty. However, under GASTON COUNTY ACCESS ' authority, a non-DOT random alcohol test may be performed any time the covered employee is on duty. Testing can occur during the beginning, middle, or end of an employee's shift.
- 7) Employees are required to proceed immediately to the collection site upon notification of their random selection.

O. RETURN-TO-DUTY TESTING

GASTON COUNTY ACCESS will terminate the employment of any employee that tests positive or refuses a test as specified in section Q of this policy. However, in the rare event an employee is reinstated with court order or other action beyond the control of the transit system, the employee must complete the return-to-duty process prior to the performance of safety-sensitive functions. All covered

employees who previously tested positive on a drug or alcohol test or refused a test, must test negative for drugs, alcohol (below 0.02 for alcohol), or both and be evaluated and released by the Substance Abuse Professional before returning to work. Following the initial assessment, the SAP will recommend a course of rehabilitation unique to the individual. The SAP will recommend the return-to-duty test only when the employee has successfully completed the treatment requirement and is known to be drug and alcohol-free and there are no undue concerns for public safety. The SAP will determine whether the employee returning to duty will require a return-to-duty drug test, alcohol test, or both.

P. FOLLOW-UP TESTING

Covered employees that have returned to duty following a positive or refused test will be required to undergo frequent, unannounced drug and/or alcohol testing following their return-to-duty test. The follow-up testing will be performed for a period of one to five years with a minimum of six tests to be performed the first year. The frequency and duration of the follow-up tests (beyond the minimums) will be determined by the SAP reflecting the SAP's assessment of the employee's unique situation and recovery progress. Follow-up testing should be frequent enough to deter and/or detect a relapse. Follow-up testing is separate and in addition to the random, post-accident, reasonable suspicion and return-to-duty testing.

In the instance of a self-referral or a management referral, the employee will be subject to non-USDOT follow-up tests and follow-up testing plans modeled using the process described in 49 CFR Part 40. However, all non-USDOT follow-up tests and all paperwork associated with an employee's return-to-work agreement that was not precipitated by a positive test result (or refusal to test) does not constitute a violation of the Federal regulations will be conducted under company authority and will be performed using non-DOT testing forms.

Q. RESULT OF DRUG/ALCOHOL TEST

- 1) Any covered employee that has a verified positive drug or alcohol test, or test refusal, will be removed from his/her safety-sensitive position, informed of educational and rehabilitation programs available, and will be provided with a list of at least two (2) USDOT qualified Substance Abuse Professionals (SAP) for assessment, and will be terminated.
- 2) Following a negative dilute the employee will be required to undergo another test. Should this second test result in a negative dilute result, the test will be considered a negative and no additional testing will be required unless directed to do so by the MRO.

- 3) Refusal to submit to a drug/alcohol test shall be considered equivalent to a positive test result and a direct act of insubordination and shall result in termination and referral to a list of USDOT qualified SAPs. A test refusal is defined as any of the following circumstances:
- a. Fail to appear for any test (except a pre-employment test) within a reasonable time, as determined by the employer.
 - b. Fail to remain at the testing site until the testing process is complete. An employee who leaves the testing site before the testing process commences for a pre-employment test has not refused to test.
 - c. Fail to attempt to provide a breath or urine specimen. An employee who does not provide a urine or breath specimen because he or she has left the testing site before the testing process commenced for a pre-employment test has not refused to test.
 - d. In the case of a directly-observed or monitored urine drug collection, fail to permit monitoring or observation of your provision of a specimen.
 - e. Fail to provide a sufficient quantity of urine or breath without a valid medical explanation.
 - f. Fail or decline to take a second test as directed by the collector or the employer for drug testing.
 - g. Fail to undergo a medical evaluation as required by the MRO or the employer's Designated Employer Representative (DER).
 - h. Fail to cooperate with any part of the testing process.
 - i. Fail to follow an observer's instructions to raise and lower clothing and turn around during a directly-observed test.
 - j. Possess or wear a prosthetic or other device used to tamper with the collection process.
 - k. Admit to the adulteration or substitution of a specimen to the collector or MRO.
 - l. Refuse to sign the certification at Step 2 of the Alcohol Testing Form (ATF).
 - m. Fail to remain readily available following an accident.
 - n. As a covered employee, if the MRO reports that you have a verified adulterated or substituted test result, you have refused to take a drug test.
- 4) An alcohol test result of ≥ 0.02 to ≤ 0.039 BAC shall result in the removal of the employee from duty for eight hours or the remainder or the work day whichever is longer. The employee will not be allowed to return to safety-sensitive duty for his/her next shift until he/she submits to a NONDOT alcohol test with a result of less than 0.02 BAC.
- 5) In the instance of a self-referral or a management referral, disciplinary action against the employee shall include:

- a. Mandatory referral for an assessment by an employer approved counseling professional for assessment, formulation of a treatment plan, and execution of a return-to-work agreement;
 - b. Failure to execute, or remain compliant with the return-to-work agreement shall result in termination from GASTON COUNTY ACCESS employment.
 - i. Compliance with the return-to-work agreement means that the employee has submitted to a drug/alcohol test immediately prior to returning to work; the result of that test is negative; the employee is cooperating with his/her recommended treatment program; and, the employee has agreed to periodic unannounced follow-up testing as described in Section P of this policy; however, all follow-up testing performed as part of a return-to-work agreement required under section Q of this policy is under the sole authority of GASTON COUNTY ACCESS and will be performed using non-DOT testing forms.
 - c. Refusal to submit to a periodic unannounced follow-up drug/alcohol test shall be considered a direct act of insubordination and shall result in termination. **All tests conducted as part of the return-to-work agreement will be conducted under company authority and will be performed using non-DOT testing forms.**
 - d. **A self-referral or management referral to the employer's counseling professional that was not precipitated by a positive test result does not constitute a violation of the Federal regulations and will not be considered as a positive test result in relation to the progressive discipline defined in Section Q of this policy.**
 - e. Periodic unannounced follow-up drug/alcohol testing conducted as a result of a self-referral or management referral which results in a verified positive shall be considered a positive test result in relation to the progressive discipline defined in Section Q of this policy.
 - f. A Voluntary Referral does not shield an employee from disciplinary action or guarantee employment with GASTON COUNTY ACCESS
 - g. A Voluntary Referral does not shield an employee from the requirement to comply with drug and alcohol testing.
- 6) Failure of an employee to report within five days a criminal drug statute conviction for a violation occurring in the workplace shall result in termination.

R. GRIEVANCE AND APPEAL

The consequences specified by 49 CFR Part 40.149 (c) for a positive test or test refusal is not subject to arbitration.

S. PROPER APPLICATION OF THE POLICY

GASTON COUNTY ACCESS is dedicated to assuring fair and equitable application of this substance abuse policy. Therefore, supervisors/managers are required to use and apply all aspects of this policy in an unbiased and impartial manner. Any supervisor/manager who knowingly disregards the requirements of this policy, or who is found to deliberately misuse the policy in regard to subordinates, shall be subject to disciplinary action, up to and including termination.

T. INFORMATION DISCLOSURE

- 1) Drug/alcohol testing records shall be maintained by the GASTON COUNTY ACCESS Drug and Alcohol Program Manager and, except as provided below or by law, the results of any drug/alcohol test shall not be disclosed without express written consent of the tested employee.
- 2) The employee, upon written request, is entitled to obtain copies of any records pertaining to their use of prohibited drugs or misuse of alcohol including any drug or alcohol testing records. Covered employees have the right to gain access to any pertinent records such as equipment calibration records, and records of laboratory certifications. Employees may not have access to SAP follow-up testing plans.
- 3) Records of a verified positive drug/alcohol test result shall be released to the Drug and Alcohol Program Manager, and other transit system management personnel on a need-to-know basis.
- 4) Records will be released to a subsequent employer only upon receipt of a written request from the employee.
- 5) Records of an employee's drug/alcohol tests shall be released to the adjudicator in a grievance, lawsuit, or other proceeding initiated by or on behalf of the tested individual arising from the results of the drug/alcohol test. The records will be released to the decision maker in the proceeding.
- 6) Records will be released to the National Transportation Safety Board during an accident investigation.
- 7) Information will be released in a criminal or civil action resulting from an employee's performance of safety-sensitive duties, in which a court of competent jurisdiction determines that the drug or alcohol test information is relevant to the case and issues an order to the employer to release the information. The employer will release the information to the decision

maker in the proceeding with a binding stipulation that it will only be released to parties of the proceeding.

- 8) Records will be released to the DOT or any DOT agency with regulatory authority over the employer or any of its employees.
- 9) Records will be released if requested by a Federal, state or local safety agency with regulatory authority over GASTON COUNTY ACCESS or the employee.
- 10) If a party seeks a court order to release a specimen or part of a specimen contrary to any provision of Part 40 as amended, necessary legal steps to contest the issuance of the order will be taken
- 11) In cases of a contractor or sub-recipient of a state department of transportation, records will be released when requested by such agencies that must certify compliance with the regulation to the FTA.

This Policy was adopted by the *Gaston County Commissioners* on 07/27/21

[APPLICABLE SIGNATURES]

Attachment A

<u>Job Title</u>	<u>Job Duties</u>	<u>Testing Authority</u>
Transporter	Operate Transit Vehicle	FTA
Operations/Safety Officer/Trainer	Train and Oversee Transporters & Manage Safety functions	FTA
Dispatcher	Receive and Dispatch Transportation Requests	FTA
Dispatch Supervisor	Oversee Dispatch Operations	FTA
Administrative Support Specialist II	Verifying & Accounting of Trips	Gaston County
Transportation Coordinator	Manage System	Gaston County

Attachment B Contacts

Any questions regarding this policy or any other aspect of the substance abuse policy should be directed to the following individual(s).

Gaston County Drug and Alcohol Program Manager

Name: Twanna Littlejohn

Title: Transportation Coordinator

Address: 816 West Mauney Avenue

Telephone Number: 704-866-3254

Medical Review Officer

Name: Neil Dash

Title: MD

Address: 546 Franklin Avenue; Massapoqua, NY 11758

Telephone Number: 800-526-9341

Substance Abuse Professional

Name: John Trombello, LPC, CEAP

Title: McLaughlin Young Group

Address: 5925 Carnegie Blvd., Suite 350; Charlotte, NC 28209

Telephone Number: 704-529-1428

Substance Abuse Professional

Name: Dr. Rawson Carlin, D, Min, LPC, LCAS, CCS

Title: McLaughlin Young Group

Address: 207 South Broad St Suite 6 Mooresville, NC 28115

Telephone Number: 704-883-6599

HHS Certified Laboratory Primary Specimen

Name: Caromont Occupational Medicine

Address: 2555 Court Drive; Gastonia, NC 28054

Telephone Number: 704-834-3076

HHS Certified Laboratory Split Specimen

Name: Lab Corp

Address: 1120 Main Street; Southaven, MS 38671

Telephone Number: 800-444-7997

SAFETY AND SECURITY PLAN

5/18/21

Table of Contents

PREFACE	70
1. MISSION DEFINITION	71
1.1 INTRODUCTION – ESTABLISHING THE PARAMETERS OF THE PLAN	71
1.2 SYSTEM OVERVIEW – WHO WE ARE AND WHAT WE DO	73
2. PREPARATION	76
2.1 OVERVIEW	76
2.2 HAZARD AND THREAT ASSESSMENT	77
2.3 COMMUNICATING ABOUT RISK: TRANSIT THREAT ALERT SYSTEM	85
2.4 EMERGENCY PLANNING	85
2.5 COORDINATING WITH STAKEHOLDERS	86
2.6 EXERCISES AND DRILLS	89
3. PREVENTION	91
3.1 OVERVIEW	91
3.2 RISK REDUCTION	91
3.3 TRAINING AND DEVELOPMENT	98
3.4 SECURITY AWARENESS	102
3.5 SAFETY DATA ACQUISITION/ANALYSIS PROCEDURES	104

PREFACE

Community transportation systems operate in a wide variety of environments including rural, urban and resort areas. Community transit includes fixed route, shared ride, paratransit and specialized service for the general public, as well as high-risk passengers such as individuals with disabilities, the elderly and young children.

Safety has always been a priority for local community transportation providers, state Departments of Transportation and the Federal Transit Administration. As a result of 9/11, and the transit attacks in Spain, England and India, there are heightened concerns for transit security even in rural communities. The destruction wrought by Hurricanes Katrina, Rita and other acts of nature have renewed our national awareness for the role that public transportation can play as a first responder resource.

Every transit system - whether a large fixed-route bus system or a small rural provider – is being asked to designate safety, security and emergency preparedness as a top priority, and to prepare to manage critical incidents for the wide array of the hazards that transit faces.

Critical Incidents could include accidents, natural disasters, sabotage, civil unrest, hazardous materials spills, criminal activity, or acts of terrorism. Regardless of the cause, critical incidents require swift, decisive action to protect life and property. Critical incidents must be stabilized prior to the resumption of regular service or activities. Successful resolution of critical incidents typically requires cooperative efforts by a variety of responding agencies.

To establish the importance of safety, security and emergency preparedness in all aspects of our organization, Gaston County ACCESS has developed this Safety, Security and Emergency Preparedness Plan (SECURITY PLAN). This SECURITY PLAN outlines the process used by Gaston County ACCESS to make informed decisions that are appropriate for our operations, passengers, employees and communities regarding the development and implementation of a comprehensive security and emergency preparedness program.

As a result of this program, Gaston County ACCESS achieves not only an effective physical security program, but enhances associations with the local public safety agencies in our service area. Improved communication increases their awareness of our resources and capabilities, and improves our readiness to support their efforts to manage community-wide emergencies, including, accidents and incidents, acts of nature, hazardous materials, criminal activity and terrorism.

In order to be effective for Gaston County ACCESS, the activities documented in this SECURITY PLAN focus on establishing responsibilities for safety, security and emergency preparedness, identifying our methodology for documenting and analyzing potential safety, security and emergency preparedness issues, and developing the management system through which we track and monitor our progress in addressing these issues.

The structure of this SECURITY PLAN focuses first on a description of Gaston County ACCESS's Mission and a comprehensive overview of the system, then on Preparation – identifying critical assets, threats and vulnerabilities to the transit system and the environment in which it operates, along with preparing our transit

staff to manage incidents in concert with external emergency management organizations and first responders, followed by Prevention – strategies for reducing risk, including training on safety/security awareness, then on Response – staff responsibilities and emergency protocols, and finally, on Recovery – putting things back together. The Appendix of this SECURITY PLAN contains forms that we use to ensure documentation of our SECURITY PLAN activities.

MISSION DEFINITION

1.1 Introduction – Establishing the parameters of the plan

1.1a. - AUTHORITY

The authority for implementing the SECURITY PLAN resides with the Gaston County ACCESS.

1.1b. - PURPOSE

This SECURITY PLAN defines our process for addressing safety, security and emergency preparedness as:

- **System Safety** – The application of operating policies and procedures to reduce vulnerability to safety-related hazards.
- **System Security** – The application of operating policies and procedures to reduce vulnerability to security threats.
- **Emergency Preparedness** – The system of policies and procedures that assure rapid, controlled, and predictable responses to a wide variety of safety and/or security incidents.

The SECURITY PLAN supports Gaston County ACCESS’s efforts to address and resolve critical incidents on our property and within our community.

Critical Incidents – Critical Incidents could include accidents, natural disasters, sabotage, civil unrest, hazardous materials spills, criminal activity, or acts of terrorism. Regardless of the cause, critical incidents require swift, decisive action to protect life and property. Critical incidents must be stabilized prior to the resumption of regular service or activities. And successful resolution of critical incidents typically requires cooperative efforts by a variety of responding agencies.

The overall purpose of the Gaston County ACCESS SECURITY PLAN is to optimize -- within the constraints of time, cost, and operational effectiveness -- the level of protection afforded to Gaston County ACCESS’s passengers, employees, volunteers and contractors, and any other individuals who come into contact with the system, both during normal operations and under emergency conditions.

This SECURITY PLAN demonstrates the Gaston County ACCESS's commitment to do the following:

- **Prepare**
 - Identify assets essential to our mission
 - Assess hazards and threats facing our agency and our community
 - Train staff how to prevent, respond to and recover from prime risks
 - Coordinate with other emergency response organizations

- **Prevent**
 - Take steps to eliminate threats where possible
 - Institute policies and procedures that reduce the likelihood of incidents occurring
 - Take steps that reduce the impact on system assets when incidents do occur

- **Respond**

React quickly and decisively to critical incidents focusing on:

 - Life Safety
 - Property Protection
 - Stabilization of Incident

- **Recover**
 - Resume service delivery based on availability of resources
 - Repair and replace critical assets
 - Assess incident response and make changes based on lessons learned.

1.1c. - GOALS

The SECURITY PLAN provides Gaston County ACCESS with a safety, security and emergency preparedness capability that:

- Ensures that safety, security and emergency preparedness are addressed during all phases of system operation including hiring and training of personnel; procurement and maintenance of equipment; development of policies and procedures; delivery of service, and coordination with local emergency management and first responder agencies
- Creates a culture that supports employee safety and security through the appropriate use and operation of equipment and resources
- Promotes analysis tools and methodologies that identify changing threat conditions and bolster agency response capabilities
- Ensures that our agency achieves a level of security performance and emergency readiness that meets or exceeds the operating experience of similarly-sized agencies
- Identifies and pursues grant funding opportunities at the state and federal level to support safety, security, and emergency preparedness efforts

- Makes every effort to ensure that, if confronted with a safety or security event or major emergency, our personnel will respond effectively, using good judgment and building on best practices identified in policies and procedures and exercised through drills and training

1.1d. - OBJECTIVES

In this new environment, every threat cannot be identified and eliminated, but Gaston County ACCESS takes steps to be more aware, to better protect passengers, employees, facilities and equipment, and stands ready to support community needs in response to a critical incident. To this end, our SECURITY PLAN has five objectives:

1. Achieve a level of security performance and emergency readiness that meets or exceeds the operating experience of similarly-sized agencies around the nation.
2. Partake in and strengthen community involvement and participation in the safety and security of our system.
3. Develop and implement a Threat and Vulnerability Assessment program and, based on the results of this program, establish a course of action for improving physical safety and security measures and emergency response capabilities.
4. Expand our training program for employees, volunteers and contractors to address safety and security awareness and emergency management concerns.
5. Enhance our coordination with partner agencies regarding safety, security and emergency preparedness issues.

1.1e. - DEFINITION

In this SECURITY PLAN, the terms “transit vehicle” or “bus” are used to describe all types of transit surface conveyances including sedans, mini-vans, vans, body-on-chassis, mini-buses and the wide range of full-size coaches.

1.2 System Overview – Who We Are and What We Do

1.2a. - ORGANIZATIONAL DESCRIPTION

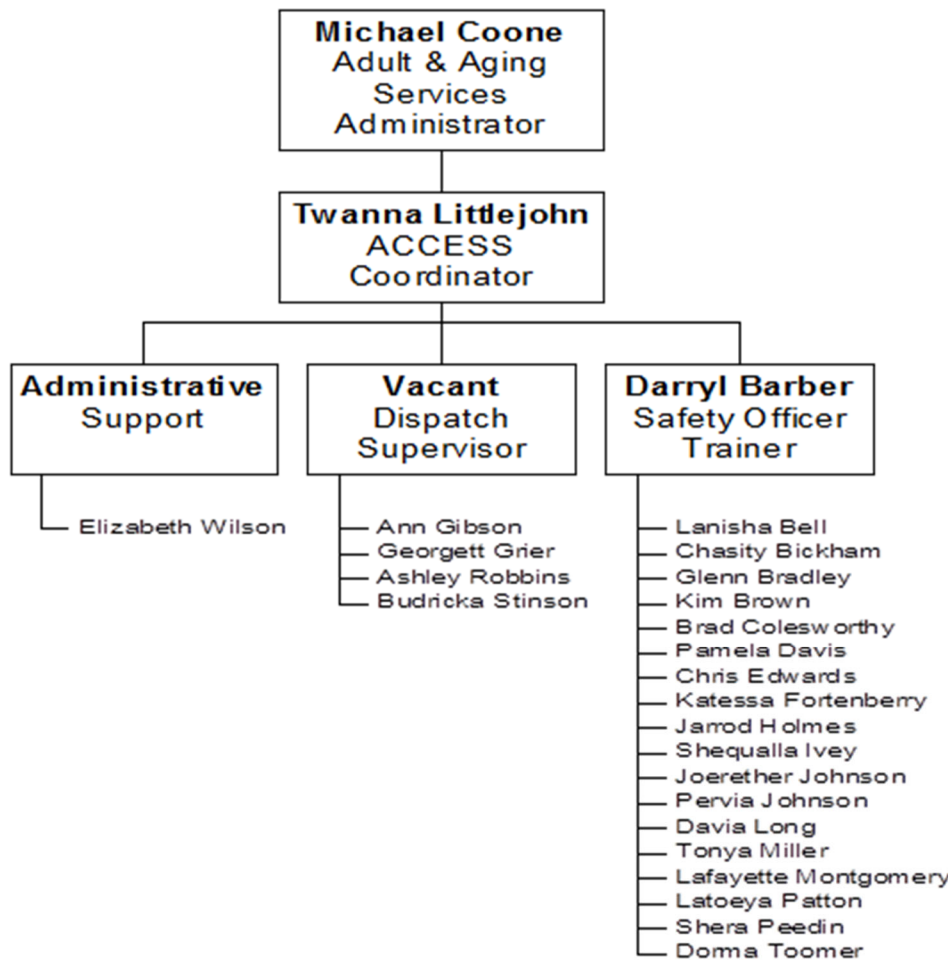
ACCESS is the transportation "clearinghouse" for the Gaston County human service agencies. ACCESS identifies and arranges the most efficient and economical transportation services for all requests. ACCESS directly provides the needed transportation unless the requests are far more than the department can

handle. If this is the case, the department makes the arrangements with outside private providers who can handle the requests, such as private transport services or other public transit providers.

1.2b. - MISSION STATEMENT

It is the mission of Gaston County ACCESS Central Transportation to enhance the quality of life for the citizens and of Gaston County by providing timely, cost efficient, high quality, general public and human service transportation

1.2c. - ORGANIZATIONAL STRUCTURE



A list of Gaston County ACCESS KEY PERSONNEL AND SECURITY PLAN RESPONSIBILITIES is found in the section of this document entitled SECURITY PLAN SUPPORTING DOCUMENTS at SECTION

Accountable Executive (Transportation Coordinator)

Serves as the Accountable Executive for implementing and ensuring that all safety standards are according to compliance and standards set forth by the Federal Transit Administration and NC DOT. The Accountable Executive is accountable for ensuring action is taken, as necessary, to address substandard performance in the agency’s SMS.

Safety Officer (Operations Supervisor)

Serves as the Chief Safety Officer for implementing and ensuring that all safety standards are according to compliance and standards set forth by the Federal Transit Administration and NC DOT. The Chief Safety Officer oversees and ensures action is taken, as necessary, to address substandard performance in the agency’s SMS.

1.2d. - SERVICE AREA

Gaston County

1.2e. - SERVICE DESIGN

Subscription route and demand response transportation services. To improve our efficiency by acquiring new technology, and expand our capacity and availability by improving our dial-a-ride system and increasing our general public transportation by utilizing a fleet of lift equipped vehicles, and small, lift equipped cutaway transit vehicles operating deviated, fixed routes.

1.2f. - FUNDING SOURCES

Funding sources include State and Federal funding (5311 and ROAP Grant funding), local human service contracts, Senior Transportation (HCCBG funding), passenger fares, and county dollars.

1.2g. - VEHICLES AND FACILITIES

Gaston County ACCESS Central Transportation, 816 W. Mauney Ave. Gastonia, NC 28052

GCA-0203	2016 DODGE MINI VAN WHITE
GCA-0220	2016 FORD E 350 LTV WHITE
GCA-0221	2018 FORD F- 350 TRUCK WHITE
GCA-0222	2018 FORD F- 350 TRUCK WHITE
GCA-0223	2019 FORD F- 350 TRUCK WHITE
GCA-0224	2019 FORD F- 350 TRUCK WHITE
GCA-0234	2019 FORD E-350 VAN WHITE
GCA-0235	2019 FORD E-350 VAN WHITE

GCA-0236	2019 FORD E-350 VAN WHITE
GCA-0251	2016 FORD F450 WHITE
GCA-0252	2016 FORD F450 WHITE
GCA-0253	2017 FORD F450 WHITE
GCA-0254	2017 FORD F450 WHITE
GCA-201	2011 DODGE MINI VAN WHITE
GCA-202	2011 DODGE MINI VAN WHITE
GCA-218	2007 FORD E-350 VAN WHITE
GCA-225	2020 FORD F450 WHITE
GCA-226	2020 FORD F450 WHITE
GCA-227	2020 FORD F450 WHITE
GCA-233	2010 FORD LTV WHITE
GCA-239	2010 FORD E-350 VAN WHITE
GCA-244	2013 FORD E-350 VAN WHITE
GCA-245	2013 FORD E-350 VAN WHITE
GCA-246	2014 FORD E-350 VAN WHITE
GCA-247	2014 FORD LTV WHITE
GCA-248	2014 FORD F450 WHITE
GCA-249	2014 FORD F550 WHITE
GCA-250	2015 FORD F450 WHITE

2. PREPARATION

2.1 Overview

While safety addresses the day-to-day issues of transporting passengers in the community safely and without accident, security deals with the entire transit system and the potential for threats against it. Security also includes Gaston County ACCESS as part of the larger community and the response within the community to environmental hazards, criminal or terrorist acts, or natural disaster.

The Gaston County ACCESS Threat and Vulnerability Assessment provides a framework by which to analyze the likelihood of hazards and threats damaging critical assets. Included in this assessment are:

- Historical analysis
- Physical surveys

- Expert evaluation
- Scenario analysis

The Threat and Vulnerability Assessment offers Gaston County ACCESS the ability to identify critical assets and their vulnerabilities to threats, to develop and implement countermeasures, and to monitor and improve program effectiveness. This analysis is guided by clear investigation of three critical questions:

1. Which assets can we least afford to lose?
2. What is our responsibility to protect these assets?
3. Where do we assume total liability for risk and where do we transfer risk to others, such as local public responders, technical specialists, insurance companies, and the state and Federal government?

A completed "CAPABILITIES ASSESSMENT" is found in the section of this document entitled SECURITY PLAN SUPPORTING DOCUMENTS at SECTION 7.2.

2.2 Hazard and Threat Assessment

2.2a. – CRITICAL ASSETS – IDENTIFYING THE IMPORTANT ELEMENTS OF OUR ORGANIZATION REQUIRING PROTECTION

Overview

In security terms, Gaston County ACCESS's assets are broadly defined as:

- **People** – Passengers, employees, visitors, contractors, vendors, community members, and others who come into contact with the system
- **Information** – Employee and customer information, computer network configurations and passwords, ridership, revenue and service statistics, operating and maintenance procedures, vehicle identification systems
- **Property** – Revenue vehicles, non-revenue vehicles, storage facilities, passenger facilities, maintenance facilities and equipment, administrative offices, computer systems and communications equipment

Assets are critical when their loss either endangers human life or impacts the Gaston County ACCESS's ability to maintain service. In reviewing assets, the transportation system has prioritized which among them has the greatest consequences for the ability of the system to sustain service. These critical assets may require higher or special protection.

Asset Analysis

An Agency "CRITICAL ASSET IDENTIFICATION AND ANALYSIS" is found in the section of this document entitled SECURITY PLAN SUPPORTING DOCUMENTS at SECTION 7.3.

In

identifying and analyzing critical assets for the entire system, under the full range of operational conditions, a simple process called "asset criticality valuation" has been performed by Gaston County ACCESS. This process helped Gaston County ACCESS management to prioritize the allocation of limited resources for protecting the most vital elements of its operation. In this asset analysis Gaston County ACCESS considered the following:

- Criticality to mission
- Asset replacement cost
- Severity of impact on public health and safety
- Impact on other assets including intangibles such as public trust and employee morale

For those assets that are mission-critical, steps are taken for risk **avoidance** (i.e. stop the activity altogether), risk **retention** (e.g. accept the risk but take steps to reduce the likelihood or impact of an incident) and risk **transference** (e.g. have someone else, like an insurer, assume the risk).

2.2b. – THREAT AND VULNERABILITY ANALYSIS

A threat is any action with the potential to cause harm in the form of death, injury, destruction of property, interruption of operations, or denial of services. Gaston County ACCESS threats include accidents and incidents, hazardous materials, fires, acts of nature, or any event that could be perpetrated by criminals, disgruntled employees, or terrorists.

Threat analysis defines the level or degree of the threats by evaluating the probability and impact of the threat. The process involves gathering historical data about threatening events and evaluating which information is relevant in assessing the threats against Gaston County ACCESS. Some of the questions answered in our threat analysis include.

- How safe are vehicles and equipment?
- How secure is the transportation facility?
- What event(s) or act(s) of nature has a reasonable probability of occurring?
- Have similar-sized agencies been targets of criminal or terrorist acts in the past?
- How significant would the impacts be?

A vulnerability is anything that can make an agency more susceptible to a threat. This includes vulnerabilities in safety/security procedures and practices involving transit facilities, transit equipment and transit staff. Vulnerability analysis identifies specific weaknesses to threat that must be mitigated.

Threat and Vulnerability Identification

The primary method used by Gaston County ACCESS to identify the threats to the transit system and the vulnerabilities of the system is the collection of historical data and incident reports submitted by drivers and supervisors and information provided by federal and state agencies and local law enforcement.

Information resources include but are not limited to the following:

- Operator incident reports
- Risk management reports
- Bus maintenance reports
- Marketing surveys
- Passengers' letters and telephone calls
- Management's written concerns
- Staff meeting notes
- Statistical reports
- Special requests
- Historical data
- Information from public safety officials

Gaston County ACCESS reviews safety/security information resources and determines if additional methods should be used to identify system threats and vulnerabilities. This includes a formal evaluation program to ensure that safety/security procedures are maintained and that safety/security systems are operable. Safety/security testing and inspections may be conducted to assess the vulnerability of the transit system. Testing and inspection includes the following three-phase approach:

1. Equipment preparedness
2. Employee proficiency
3. System effectiveness

A completed "PRIORITIZED VULNERABILITY REPORT" is found in the section of this document entitled SECURITY PLAN SUPPORTING DOCUMENTS at SECTION 7.4.

Scenario Analysis

Scenario analysis is brainstorming by transportation personnel, emergency responders, and contractors to identify threats to the system and to assess vulnerability to those threats. By matching threats to critical assets, Gaston County ACCESS identifies the capabilities required to counteract vulnerabilities. This activity promotes awareness and enables staff to more effectively recognize, prevent, and mitigate the consequences of threats.

For each scenario, the Gaston County ACCESS has attempted to identify the potential impacts of probable threats using a standard risk analysis protocol in which threats are segmented by probability from low to high and severity of impact from modest to catastrophic.

Scenario-based analysis is not an exact science but rather an illustrative tool demonstrating potential consequences associated with low-probability to high-impact events. To determine the actual need for additional countermeasures, and to provide the rationale for allocating resources to these countermeasures, the Gaston County ACCESS uses the scenario approach to pinpoint the vulnerable elements of the critical assets and make evaluations concerning the adequacy of current levels of protection.

At the conclusion of the scenario-based analysis, the Gaston County ACCESS assembled a list of prioritized vulnerabilities for its top critical assets. These vulnerabilities are divided into the following categories:

- lack of planning;
- lack of coordination with local emergency responders;
- lack of training and exercising; and
- lack of physical security

Based on the results of the scenario analysis, the Gaston County ACCESS identified countermeasures to reduce vulnerabilities.

2.2c. - IDENTIFIED POTENTIAL TRANSIT SYSTEM THREATS

Gaston County ACCESS is committed to focusing on organizational emergency planning activities and preparing its transit staff to react to any potential threatening event. Gaston County ACCESS understands that threat reaction planning and preparation is a dynamic and ongoing process which requires constant attention and organizational energy. It is essential to identify each potential threat that a transit system could face, evaluate those threats in terms of their potential impact on transit system assets and to analyze transit system vulnerability to those threats. The Gaston County ACCESS has done such a Threat and Vulnerability Assessment for the following potential threats:

Completed "THREAT AND VULNERABILITY ANALYSIS" forms and "THREAT AND VULNERABILITY ASSESSMENT" forms for each of the below listed threats are found in the section of this document entitled SECURITY PLAN SUPPORTING DOCUMENTS at SECTION 7.5.

ACCIDENTS AND INCIDENTS

- **Transit vehicle accidents**

Can be defined as collisions with other vehicles, objects or persons with the potential for damage to people and/or property and the possibility of lawsuits and/or criminal charges.

- **Transit passenger incidents**

Involve passenger falls, injuries relating to lift and securement operation, injuries before boarding or after alighting and passenger illnesses

- **Employee accidents and incidents**

Include injuries within the office, on official travel, while maintaining the equipment, and on-premises, but not while operating a vehicle for public transport. Such accidents/incidents create the possibility for loss of workforce, lawsuits and worker's compensation claims.

ACTS OF NATURE

- **Floods**

Are caused by heavy rain, storm surge, rapid snowmelt, ice jams, dam breaks or levee failures and can result in loss of life damage to facilities, danger to vehicles on roadways and loss of power and communications. Such events could require use of transit system assets for evacuation purposes.

- **Winter weather**

Snow and ice storms can cause power failures, make roads dangerous or impassable, cause sidewalk hazards, and affect the ability to deliver transit service.

- **Tornado/hurricane**

High winds have the potential to cause flying debris, down trees and/or power lines, make roadways impassable or dangerous, damage facilities or vehicles and threaten the safety of passengers and employees. Such events could require use of transit system assets for evacuation purposes.

- **Thunderstorms**

May trigger flash flooding, be accompanied by strong winds, hail or lightning, can possibly cause power or communication system outages, damage facilities and equipment and make roads dangerous or impassable.

- **Wildfire**

Whether natural or human-caused, are particularly dangerous in drought conditions, can reduce visibility, impair air quality, and have the potential to damage facilities, equipment and make roadways impassable. Such an event could require use of transit system assets for evacuation purposes.

- **Earthquake**

Has the potential to cause extensive damage to buildings, water systems, power systems, communications systems, roads, bridges and other transportation infrastructure. Such events often

overwhelm first responder resources. In coastal areas, tsunamis, or tidal waves, are a hazard following major earthquakes and underwater tectonic activity. A transit system's assets could be used for evacuation purposes after damage assessment.

- **Landslide/Avalanche**

Has the potential to close roadways, damage vehicles and facilities and injure employees and passengers.

- **Dust storm**

Usually arrives suddenly in the form of an advancing wall of dust and debris which may be miles long and several thousand feet high, and usually last only a few minutes. Blinding, choking dust can quickly reduce visibility, causing accidents. While dust storms may last only a few minutes, they tend to strike with little warning.

CRITICAL INFRASTRUCTURE

- **Power outages**

Whether short or long in duration, can impact overall ability to operate transit services and limit functional nature of transit equipment and facilities.

- **Computer crashes/cyber attacks**

Cause loss of critical data and negatively impact the ability to schedule and dispatch services.

- **Communication system failure**

Can have serious effects on the ability to deliver service and keep employees out of harm's way.

- **Supply chain interruption**

Transit service is dependent upon a continuous supply of fuel, lubricants, tires, spare parts, tools, etc. Interruption of material supplies due to weather conditions, roadway closures, acts of terrorism, acts of war, or loss of supplier facilities can limit your ability to maintain service.

- **Vehicle fires**

Cause transit employee and passenger injuries and death and damage or loss of transit equipment and have the potential for lawsuits.

- **Facility loss**

Loss of administrative, maintenance, or operations facilities— whether caused by structural collapse, presence of toxic materials, violation of municipal codes, or significant events on neighboring properties — can hamper the ability to sustain service.

- **Structural Fire**

Whether natural or human-caused, can threaten employees and customers and damage facilities and equipment. Such an event could require use of transit vehicles for temporary shelter, or for evacuation purposes.

- **Staff shortage**

Caused by labor disputes, poor human resource management, or regional employee shortages. Can have immediate impacts on ability to deliver service, and longer-term impacts on facility and equipment resources.

- **Employee malfeasance**

Illegal and illicit behavior by agency employees, particularly when in uniform or on duty, can seriously damage intangible assets such as organizational image and employee morale.

HAZARDOUS MATERIALS.

- **Blood borne pathogens**

Exposure can put drivers, passengers, maintenance employees and bus cleaners at risk of contracting disease.

- **Toxic material spills**

Toxic materials fall into four basic categories: blister agents such as solvents; cardio-pulmonary agents such as chlorine gas; biological agents such as anthrax; and nerve agents such as Sarin. While some of these materials may be agents of terrorist acts, accidental release is also possible. Additionally, low-level exposure to maintenance related chemicals and vehicle fluids can pose a risk to employee and environmental health.

- **Radiological emergencies**

Could include accidental release of radioactivity from power plants or from materials being transported through the service area by truck or train. Have the potential to cause danger to human life or the need for use of transit system assets for evacuation purposes.

- **Fuel related events**

Include accidental release of natural gas and petroleum, rupture of pipelines, and fire and explosion involving alternative fuel use. Dangers include risk of human life, damage to facilities and vehicles, and events that may require use of transit system assets for evacuation purposes.

CRIMINAL ACTIVITY

- **Trespassing**

Penetration of organizational security system can increase vulnerability to criminal mischief, theft, workplace violence, and terrorist attack.

- **Vandalism/Criminal mischief**

Includes graffiti, slashing, loitering, or other such events that damage buses, bus stops, shelters, transit facilities and/or organizational image.

- **Theft and burglary**

Includes loss of assets due to break-in to facilities and into vehicles as well as employee theft, and can threaten information assets, property assets, and organizational image.

- **Workplace violence**

Includes assaults by employees on employees, passengers on passengers, and passengers on employees including menacing, battery, sexual assault, and murder.

- **Commandeered vehicle**

The taking of a transit vehicle to perpetrate a crime and the taking of hostages as a negotiating tool. Puts the lives of transit employees and passengers at risk.

TERRORISM

- **Dangerous mail**

Chemical, biological, radiological and explosive devices delivered through the mail put the lives of transit employees and occupants of transit facilities at risk, and have the potential for damage of facilities and equipment.

- **Suicide bombers**

Internationally, transit systems have been common terrorist targets. American transit systems are not immune. The major inherent vulnerabilities of transit are that transit systems by design are open and accessible, have predictable routines/schedules, and may have access to secure facilities and a wide variety of sites, all of which make transit an attractive target.

- **Improvised Explosive Devices (IED)**

Activities could involve the use of conventional weapons and improvised explosive devices or bombs on transit vehicles, within transit facilities or within the environment of the transit service area, putting the lives of transit employees, passengers and community members at risk. Such events could require the use of transit vehicles in evacuation activities.

- **Weapons of mass destruction**

Use of chemical, biological or radiological weapons could cause massive loss of life involving everyone in the community and lead to the destruction of transit vehicles and facilities, as well as require the use of transit vehicles for evacuation purposes.

2.3 Communicating about Risk: Transit Threat Alert System

The Federal Transit Administration has developed a transit ***Threat Condition Model*** that parallels that of the Department of Homeland Security. The FTA model progresses from green through red to indicate threat levels from low to severe. It also includes purple designating disaster recovery. This model, along with its recommended protective measures, has been adapted for use by Gaston County ACCESS.

The Gaston County ACCESS SAFETY/SECURITY ALERT SYSTEM is found in the section of this document entitled SECURITY PLAN SUPPORTING DOCUMENTS at SECTION 7.6.

2.4 Emergency Planning

2.4a. – INTERNAL CONTACT INFORMATION

Gaston County ACCESS maintains accurate and up-to-date internal contact information on key staff and board members required to respond to safety and security emergencies.

2.4b. – EXTERNAL CONTACT INFORMATION

Gaston County ACCESS maintains accurate and up-to-date external contact information on key community emergency management personnel and first responders to be notified in the case of safety and security emergencies.

Completed Internal and External "CONTACT LISTS" are found in the section of this document entitled SECURITY PLAN SUPPORTING DOCUMENTS at SECTION 7.7.

2.4c – EMERGENCY RESPONSE TEAM ROSTER

Gaston County ACCESS maintains an accurate and up-to-date roster that includes contact information of the transit incident management team in advance of any incident. This team is based on the Incident Command System (ICS) discussed in Chapter 4 and includes representation from each area of the organization.

A Completed "EMERGENCY RESPONSE TEAM ROSTER" is found in the section of this document entitled SECURITY PLAN SUPPORTING DOCUMENTS at SECTION 7.8.

2.4d – PHONE TREES

Gaston County ACCESS maintains an accurate and up-to-date call tree with staff names and phone numbers. The call tree enables everyone in the organization to be contacted quickly, with each staff member having to make no more than a couple of calls. Details on *use* of the call list are included in Chapter 4 – Response. Quarterly exercises using the phone tree should be run so that all members of the team are familiar with its use and application.

2.4e. – DELEGATION OF AUTHORITY

Gaston County ACCESS has a plan to ensure continuity of management throughout any emergency incident. The succession plan provides for automatic delegation of authority in cases where:

- The Emergency Management Director or other agency incident response personnel are no longer able to perform incident-related duties due to injury, illness or exhaustion/rest and recuperation.
- A member of the incident response team is temporarily unable to perform incident-related duties due to loss of radio or phone service.
- Regular members of the agency incident response team are unavailable due to travel (e.g., vacation, professional development, etc.)

The succession plan designates the next most senior leader required to manage temporary duties normally assigned to higher-level personnel.

A completed "SUCCESSION LIST" reflecting Gaston County ACCESS emergency internal chain of command is found in the section of this document entitled SECURITY PLAN SUPPORTING DOCUMENTS at SECTION 7.9.

2.5 Coordinating with Stakeholders

Gaston County ACCESS is committed to proactively coordinate with local emergency management, law enforcement and other first responders in preparing for an integrated response to emergencies and security related events. Toward this end Gaston County ACCESS meets on a regular basis with local emergency management staff, local law enforcement and other first responders, and reviews local and transit agency emergency plans to ensure that transit is integrated into these plans and is prepared to play its defined role in any emergency.

2.5a. – COORDINATION WITH EMERGENCY MANAGEMENT

Effective emergency response does not happen by accident. It is the result of planning, training, exercising, and intra/interagency cooperation, coordination and communication. Integration into the local community’s emergency planning process is central to the success of the Gaston County ACCESS SECURITY PLAN and to the preparedness of the system. Gaston County ACCESS coordinates with local community emergency management to fulfill all SECURITY PLAN functions including threat mitigation, consequence management planning, exercising and training, and post-incident analysis.

In this SECURITY PLAN, Gaston County ACCESS has defined its internal processes for identifying safety and security events, mitigating consequences and managing or assisting in incident response.

Completed "MEMORANDUM OF UNDERSTANDING" between Gaston County ACCESS and Community Emergency Management is found in the section of this document entitled SECURITY PLAN SUPPORTING DOCUMENTS at SECTION 7.10.

2.5b. – COORDINATION WITH FIRST RESPONDERS

Law Enforcement

Gaston County ACCESS management regularly works with the local and state law enforcement to improve security and emergency/incident preparedness and response capabilities. These activities include:

- Maintaining regular communications with law enforcement
- Meeting at least once a year to ensure transit issues are understood by law enforcement
- Developing an emergency contact list for dispatchers

- Communicating regularly on optimal incident reporting methods that will offer law enforcement all the information they need
- Participating in cooperative emergency preparedness training programs
- Establishing appropriate methods of communication for continuous coordination during an emergency
- Establishing procedures for supplying the unique types of emergency service that may be required in particular emergency situations

Fire

Gaston County ACCESS works with the local fire departments on a regular basis to support improved security and emergency/incident preparedness and response. This includes the following activities:

- Maintaining regular communications with fire services
- Establishing the level of service (e.g., equipment and personnel) to be delivered in response to various types of emergencies
- Specifying in advance the level of notification, command and control, and degree of responsibility that will apply on site
- Establishing appropriate methods of communication, and developing procedures for continuous coordination and transfer of command
- Providing training for fire department personnel to familiarize them with transit vehicles and equipment, including wheelchair lifts and access/egress procedures
- Conducting periodic drills in cooperation with the fire department
- Scheduling a meeting at least annually to ensure transit issues (e.g., evacuation of transit vehicles, considerations for persons with disabilities) are understood by fire officials
- Identifying any special tools and equipment the firefighters might need to address transit emergencies (particularly items that they would not normally possess) by inviting firefighters to visit the agency annually, and walking them through transit vehicles and facilities
- Reviewing current fire-related plans and policies
- Ensuring fire annunciation and evacuation procedures are part of the standard procedures and training for operators

Emergency Medical Services

Gaston County ACCESS works with the local emergency medical services including hospitals on a regular basis to support improved medical response. Preparations include the following activities:

- Maintaining regular communications with EMS

- Scheduling a meeting on transit property or at the offices of EMS at least annually to ensure transit issues are understood by the organization
- Establishing appropriate EMS unit jurisdictions
- Establishing the level of service (equipment, personnel, etc.) to be delivered in response to various types and degrees of emergencies
- Establishing appropriate methods of communication for continuous coordination during a response
- Familiarizing EMS personnel with transit vehicles and facilities
- Conducting periodic drills in conjunction with EMS personnel

Training of First Responders on Transit Equipment

Gaston County ACCESS holds annual training with local first responders to improve familiarity with transit fleet, facilities and operations. Key areas covered include:

- Vehicle and facility entry - windows, doors and hatches
- Hazardous materials
- Facility escape routes and safety zones
- Equipment shutdown
- Emergency dump valves
- Battery cut-off switches
- Appropriate zones to breach transit vehicles in event of an incident
- Communications compatibility

2.6 Exercises and Drills

In crisis management as in sports, the transit agency plays the way it practices. That is why Gaston County ACCESS is committed to testing their emergency preparedness plans through disaster drills and exercises.

Gaston County ACCESS is committed to participating in community emergency response exercises. This commitment requires the transportation system and community public response agencies to plan and conduct increasingly challenging exercises over a period of time. Implementation of such a program allows the collective community to achieve and maintain competency in executing the transportation component of local emergency response plans.

There are five major types of exercises that comprise this program, each with a different purpose and requirement. Each step is progressively more sophisticated in nature and will be undertaken in a step-by-step and long-term implementation plan that is integrated into overall community response.

1. Basic awareness training to familiarize participants with roles, plans, procedures, and resolve questions of coordination and assignment of responsibilities.

2. Operational training to familiarize front-line staff with roles, plans, procedures, and resolve questions of coordination and assignment of responsibilities.
3. Tabletop exercises that simulate emergency situations in an informal, low stress environment. It is designed to elicit discussion as participants examine and resolve problems based on existing crisis management plans and practical working experience.
4. Drills that test, develop or maintain skills in a single response procedure (e.g., communications, notification, lockdown, evacuation procedures, etc.). Drills can be handled within the organization, or coordinated with partner agencies, depending upon the drill objective(s). Drills help prepare players for more complex exercises in which several functions are simultaneously coordinated and tested.
5. Functional exercises are full-scale simulated incidents that tests one or more functions in a time-pressured realistic situation that focuses on policies, procedures, roles and responsibilities. It includes the mobilization of emergency personnel and the resources appropriate to the scale of the mock incident. Functional exercises measure the operational capability of emergency response management systems in an interactive manner resembling a real emergency as closely as possible.

3. PREVENTION

3.1 Overview

Gaston County ACCESS follows the guidelines provided by the Federal Transit Administration's (FTA) description of Core Elements addressing *Model Bus Safety Programs* in our internal focus on safety and the FTA's *Public Transportation System Security and Emergency Preparedness Planning Guide* in our internal focus on security.

A Completed "FTA TOP 20 SECURITY PROGRAM ACTION ITEMS FOR TRANSIT AGENCIES: SELF-ASSESSMENT CHECKLIST" is found in the section of this document entitled SECURITY PLAN SUPPORTING DOCUMENTS at SECTION 7.12.

3.2 Risk Reduction

The Gaston County ACCESS reviews current methods of threat and vulnerability resolution and establish procedures to 1) eliminate; 2) mitigate; 3) transfer, and/or 4) accept specific risks. Prioritization of safety/security remediation measures are based on risk analysis and a course of action acceptable by Gaston County ACCESS management.

Risk reduction/elimination implies changes to equipment, facilities, training or operational implementation in order to no longer be exposed to the hazard (e.g. moving maintenance facility out of the floodplain). ***Risk control/mitigation*** implies changes in policies or procedures that reduce the likelihood of an event, or reduce its impact on critical assets (e.g. defensive driver training). ***Risk transference*** implies that the risk exposure is borne by someone else (e.g. hazard and liability insurance).

3.2a. - STRATEGIES TO MINIMIZE RISK

Protocol that Gaston County ACCESS employs to reduce vulnerability to unknown hazards and threats includes:

- Involving staff in the identification of hazards and threats
- Involving staff in creating strategies that prevent or mitigate unwanted incidents
- Providing training that raises staff awareness, across all departments, about agency-specific hazards and threats
- Using tabletop exercises to establish, assess and improve emergency response protocols
- Conducting Drills that raise staff proficiency in reacting to unwanted incidents, including proper use of emergency equipment and communication technologies

- Participating in exercises that improve coordination across departments and between responding agencies for any sort of critical incident
 - All transporters are required to wear reflective vest while on duty.

3.2b. - EMERGENCY OPERATIONS POLICIES

Checking Weather and Other Hazardous Conditions

Gaston County ACCESS has in place Operations Policies that address responding to emergencies. Particular attention is given to the following issues:

At Gaston County ACCESS, management is responsible for checking weather and other reports to ensure it is safe to send vehicles on the road. This designated individual checks this information before each shift and at appropriate intervals, especially if severe weather is expected. Drivers performing their routes continuously assess road conditions, evaluating weather, construction, accidents, and other situations to ensure it is safe to proceed. Every effort is made to avoid sending drivers on routes if it is unsafe to do so. However, if a condition arises requiring a driver to abort a route, the dispatcher will contact the driver (or the driver will alert the dispatcher), and the dispatcher will provide instructions on how to proceed.

Gaston County ACCESS uses National Weather Service warnings, forecasts, and advisories available at www.weather.gov, and weather radios monitored at dispatch site to track real-time information on the following conditions:

- | | |
|------------------------------------|--------------------------------|
| ▪ Hazardous weather outlooks | ▪ High wind warnings |
| ▪ Special weather statements | ▪ High wind watches |
| ▪ Winter storm watches | ▪ Wind advisories |
| ▪ Winter storm warnings | ▪ Gale warnings |
| ▪ Snow and blowing snow advisories | ▪ Tornado watches and warnings |
| ▪ Winter weather advisories | ▪ Hurricanes |
| ▪ Heavy freezing spray warnings | ▪ Flood warnings |
| ▪ Dense fog warnings | ▪ Flood statements |
| ▪ Fire weather forecasts | ▪ Coastal flood statements |

Gaston County ACCESS also maintains a dispatcher log, a narrative description of what occurs during each shift. This enables the incoming dispatcher to read the previous shift log and know what needs to be tracked, problem areas of concern, or what is going right and wrong.

Aborting or Changing Route Due to a Hazard

To the extent possible, Gaston County ACCESS avoids sending vehicles out in conditions that might pose a hazard. It is the responsibility of the management to check weather and other relevant conditions at the beginning of a

shift, and on an ongoing basis, to safeguard the wellbeing of passengers, employees, and others. If a hazard is encountered that causes it to be unsafe to continue on a route, agency policy is as follows:

- If the hazard is noted by the driver, he/she must call the dispatcher, describe the situation, and await further instruction.
- If the hazard is noted by staff other than the driver (e.g., the dispatcher becomes aware that a tornado is approaching), the dispatcher will contact the driver and provide direction.

Direction may be as follows:

- To abort the route, and drive the passengers to the nearest emergency drop point (see policy on emergency drop points)
- To abort the route and return to the agency (particularly if there are no passengers on the vehicle)
- To drop off some or all passengers at the next stops and to then abort the route, following the instructions of the dispatcher (returning to the agency or using an emergency drop point)

With most hazards or emergencies, it is the primary policy of Gaston County ACCESS that the driver, first, communicates with the dispatcher, describes the situation, and awaits instruction. The exception to this is in the case of an immediate life threatening situation when the driver acts first, then communicates. Policies are in place for a range of situations.

3.2c. – TRANSIT FACILITY SAFETY AND SECURITY REVIEW

Gaston County ACCESS assesses on an ongoing basis the system's physical and procedural security systems and exposures. Findings from past and current threat and vulnerability assessments are of particular significance.

The conditions affecting facility security change constantly. Employees come and go, a facility's contents and layout may change, various threats wax and wane, and operations may vary. Even such mundane changes as significant growth of bushes or trees around a facility's exterior may affect security by shielding the view of potential intruders. Gaston County ACCESS reviews our security measures periodically, as well as whenever facilities or other conditions change significantly. Gaston County ACCESS also does the following:

- updates risk assessments and site surveys;
- reviews the level of employee and contractor compliance with security procedures;
- considers whether those procedures need modification; and
- Establishes ongoing testing and maintenance of security systems including access control, intrusion detection and video surveillance.

Special attention is given by Gaston County ACCESS to:

- developing and refining security plans
- encouraging personnel to maintain heightened awareness of suspicious activity
- providing special attention to perimeter security and access control

- maintaining a proactive effort of facility visitor access and control
- verifying the identify of service and delivery personnel
- heightening security measures involving buses and other vehicles
- securing access to utilities, boiler rooms and other facility maintenance operations
- examining and enhancing physical security measures related to outside access to HVAC (heating, ventilation and air conditioning) systems and utility controls (electrical, gas, water, phone)
- securing chemical and cleaning product storage areas and maintaining appropriate records of such items
- conducting status checks of emergency communication mechanisms
- implementing information security programs including web site access to sensitive information
- identifying high risk facilities, organizations and potential targets in the community surrounding the transit facility
- using ID badges for all employees for security purposes
- considering using cameras to monitor facilities and/or transit vehicles
- ensuring adequate lighting for the facility grounds
- considering placing fencing or similar barrier around perimeter of facility and storage areas
- developing, reviewing, refining and testing crisis preparedness procedures

Bus Stop Locations

When a decision is made to establish a bus stop, Gaston County ACCESS assesses bus stop locations to ensure that stops are located in the most secure areas possible. Guidelines for this assessment are:

- Highly visible
- Well lighted
- Located in populated areas when possible
- Located away from unsafe areas
- Co-located with other activity centers if possible

3.2d. - OSHA REQUIREMENTS

Gaston County ACCESS periodically inspects its facilities and staff working conditions in order to ensure that the agency is compliant with all applicable OSHA requirements.

3.2e. – ALTERNATE BUSINESS LOCATIONS

Gaston County ACCESS has established plans for alternate facilities, equipment, personnel, and other resources necessary to maintaining service during crisis, or to resume service as quickly as possible following disaster.

A Completed "ALTERNATE FACILITY CERTIFICATION CHECKLIST" is found in the section of this document entitled SECURITY PLAN SUPPORTING DOCUMENTS at SECTION 7.13.

Emergency Drop Points

Emergency drop points are pre-designated safe locations that are used by drivers to drop off passengers whenever instructed to do so by the dispatcher or the designated backup. In the event of an emergency, the dispatcher ensures that the driver has been contacted and given instructions as to where to drop off passengers, and the estimated time to drop off.

Decisions on selection of drop points are based on the following:

- All points must be manned
- Geographic distribution
- Physical safety of drop points
- Prioritization of passenger needs based on critical factors (i.e., medical needs of persons in the area, environmental conditions, etc.)
- Availability of on-site personnel to address passenger needs

Pre-existing agreements are in place for all drop points and the list of drop points is maintained by Gaston County ACCESS and reviewed on a quarterly basis.

3.2f. – COMPUTER SECURITY

Computer backups of key financial, personnel, dispatching, and other information are performed regularly. These backups are stored in a fireproof and secured location. Computer backups and duplicate hard copies of important documents are kept off-site in a secured location with a rotation schedule that is updated daily so that at no time are all copies on property at the same time.

3.2g. – VEHICLE INSPECTION

Driver's Vehicle Checklist

Gaston County ACCESS drivers complete a vehicle pre-trip inspection checklist when putting a vehicle into service. This pre-trip inspection includes:

- Inspection of the vehicle's required safety equipment
- Inspection of the interior of the vehicle to detect unauthorized objects or tampering
- Inspection of the interior lights to make sure they are operational and have not been tampered with
- Inspection under the vehicle to detect items taped or attached to the frame
- Inspection of the exterior of the vehicle for unusual scratches or marks made by tools; signs of tampering; unusually clean or dirty compartments; or items attached using magnets or duct tape

- Following established policy governing suspicious packages, devices, or substances to determine if an unattended item or an unknown substance found during inspection is potentially dangerous
- Immediately notifying a supervisor in the case of a potentially suspicious packages(s) or evidence of tampering. Do not start or move the vehicle or use electronic means of communication.

Periodically throughout the driver's shift, the above inspections are conducted.

Mechanic's Vehicle Checklist

Gaston County ACCESS mechanics or contracted mechanics make the following security checks before releasing a vehicle for revenue service:

- Ensures that required safety equipment is on vehicle
- Inspects the interior of the vehicle for unknown objects or tampering
- Inspects the interior lights to make sure they are operational and have not been tampered with
- Inspects under the vehicle for items taped or attached to the frame
- Inspects the exterior of the vehicle for unusual scratches or marks made by tools; signs of tampering; unusually clean or dirty compartments; or items attached using magnets or duct tape
- Inspects the gas cap for signs of tampering or unusual items
- Inspects the engine compartment and other areas to detect foreign objects or false compartments in the air filter area or the cold oil filter. Also look for additional wires running to or from the battery compartment, and take note of unusually clean components and devices
- Inspects the fuel and air tanks to detect inconsistent and missing connections

Note: If the mechanic finds an unattended item or an unknown substance while conducting the inspection, the policy on suspicious packages, devices, or substances to determine whether the package is potentially dangerous is followed, and a supervisor is immediately notified.

3.2h. - VEHICLE MAINTENANCE

Gaston County ACCESS provides proper maintenance of vehicles and equipment critical to the continued safe operation of the transit system. Unsafe vehicles present unnecessary hazards to the driver, passengers and other vehicles on the road. Basic vehicle maintenance practices regularly address safety-related vehicle equipment to ensure that no unsafe vehicles are dispatched for service. Safety-related vehicle equipment includes:

- Service brakes and parking brake
- Tires, wheels, and rims
- Steering mechanism
- Vehicle suspension
- Mirrors and other rear vision devices (e.g., video monitors)
- Lighting and reflectors or reflective markings
- Wheelchair lifts

Most safety-related equipment is inspected during a pre-trip inspection to ensure that the vehicle is fit for service. Gaston County ACCESS has an established formal plan to address the maintenance requirements of our vehicles and equipment. The vehicle maintenance program addresses the following categories:

- **Daily servicing needs** – This relates to fueling, checking and maintaining proper fluid levels (oil, water, etc.), vehicle cleanliness, pre- and post-trip inspections and maintenance of operational records and procedures.
- **Periodic inspection** – These activities are scheduled to provide maintenance personnel an opportunity to detect and repair damage or wear conditions before major repairs are necessary. Inspection items include suspension elements, leaks, belts, electrical connections, tire wear, and any noticeable problems.
- **Interval related maintenance** – This focus is to identify wear, alignment, or deterioration problems of parts or fluids. Replacement intervals of these items are determined through transit agency experience and manufacturer recommendations.
- **Failure maintenance** - Regardless of the preventative maintenance activities, in-service failures will occur. When a failure is encountered that makes the vehicle unsafe or unable to continue operation, the vehicle is usually removed from service and returned to the garage for repair.

When possible, Gaston County ACCESS vehicles are stored in a secured and well- lighted location.

3.2i. – VEHICLE READINESS

It is the policy of Gaston County ACCESS to maintain fully stocked first aid kits, biohazard cleanup packs, fire suppression equipment, vehicle emergency equipment, and emergency instructions in all vehicles. Battery operated equipment batteries will be replaced semi-annually. The assigned driver inspects the vehicle daily for the following emergency supplies and documents the results on the pre-trip inspection sheet. In addition, when a mechanic places a vehicle back in service, he/she ensures the required safety equipment is on the vehicle. The required safety equipment includes:

First Aid Kit	Bio-hazard Kit
Fire Extinguisher	Reflective Triangles
Seat Belt Cutter	Flashlight

3.2j. – OPERATOR SELECTION

Operator selection is critical to Gaston County ACCESS safe transit operations. The driver of a Gaston County ACCESS transit bus is directly responsible for the safety of his or her passengers and other drivers that share the road with the transit vehicle. The driver selection criterion addresses specific, safety-related items.

- **Licensing** – The driver is properly licensed and the license is appropriate for the type of vehicle the driver is assigned. Licensing also considers local jurisdiction requirements.
- **Driving record** – The driver has an acceptable past driving record over a reasonable period of time. The driving record demonstrates an ability to follow traffic rules and regulations and thus avoid accidents.
- **Physical requirements** - The driver is physically able to perform the functions associated with the assignment. These factors include good eyesight with true color perception, good hearing, physical strength and dexterity to assist disabled passengers (especially in demand responsive/para-transit assignments), or other factors that may be unique to the service area and/or specific driving assignments.
- **Background checks** - Gaston County ACCESS does background checks on all employees to protect against hiring personnel with a history of aberrant behavior.

3.2k. - DRUG AND ALCOHOL POLICIES

A critical element of Gaston County ACCESS's commitment to safe operations is ensuring that our employees are not impaired due to the use of alcohol, illegal drugs, prescription drugs or over-the-counter medication.

Gaston County ACCESS follows the requirements set forth under 49 CFR Part 655 and 49 CFR Part 40 Amended as mandated by the FTA. The bottom line is protection of the riding public and transit employees, and all efforts are geared toward this end. The Gaston County ACCESS drug and alcohol program includes specific policies, procedures and responsibilities, or references the appropriate master document containing that information.

3.3 Training and Development

3.3a. – VEHICLE OPERATOR/DRIVER TRAINING

Driver Training

Once qualified candidates are identified and hired, Gaston County ACCESS provides initial and ongoing refresher training critical to ensure proper operations and adherence to the transit providers' rules and regulations. Gaston County ACCESS understands that proper qualification of operating and maintenance personnel is a vital part of a safe transit environment. Driver training addresses specific safety-related issues appropriate to the type of vehicle and driving assignment. Special consideration is also given to crisis management concerns such as fire and evacuation.

- **Traffic Regulations** – Training addresses state and local traffic rules and regulations, traffic signs and signals, and proper vehicle operations (including proper use of hand signals).

- **Defensive Driving and Accident Prevention** – Training stresses defensive driving principles, collision prevention, and concepts of preventable accidents as a measure of defensive driving success.

Gaston County ACCESS drivers are taught to always drive defensively. This means driving to avoid and prevent accidents. It means driving with the vehicle under control at all times, within the applicable speed limits, or less if driving conditions so indicate, and anticipating possible unsafe actions of other drivers. Special attention is given in the Gaston County ACCESS safety program to hazardous conditions. These hazardous conditions include but are not limited to:

Winter driving	Fog
Rainstorms/thunderstorms	Flash flooding
Tornadoes	Skids
Intersections	Following distance
Backing	Passing
Lane changes and turns	Pedestrians, bicycles and motorcycles
Railroad crossings	Rollovers
Expressways	Traffic congestion

- **Vehicle Orientation and Inspection** – Training focuses on the type of vehicle that will be used in service. Significant differences can exist among different bus models and among different manufacturers, and equipment may have characteristics that are unique to the service environment.
- **Behind-the-wheel Training** – Training includes all core driving maneuvers for the type of vehicle in service, including the difficulties in backing maneuvers that can lead to accidents, stopping distance requirements, and equipment-specific functions such as door opening and closing procedures for passenger boarding and alighting.
- **Passenger Sensitivity and Assistance Training** – Training covers topics ranging from general customer service techniques to elderly and disabled sensitivity to technical skills in lift and securement. The following subjects are included in the training:
 - Understanding passenger needs
 - Understanding disabilities
 - Americans with Disabilities Act (ADA)
 - Communicating with passengers
 - Sensitivity to passenger needs
 - Mobility devices
 - Lifting and body mechanics
 - Providing assistance to passengers
 - Wheelchair management
 - Lift and ramp operations
 - Emergency procedures

Radio Usage

To ensure the safety of our drivers and passengers and to enhance the performance of our operations, all Gaston County ACCESS employees are familiar with two-way radio operations. Basic procedures are as follows:

- Staff using the two-way radio will follow the standard use practices of the FCC. Profanity, abusive language, or other inappropriate transmissions are not allowed, and could result in disciplinary action.
- All transmissions will be as brief as possible.
- All base stations and vehicle units shall be tuned to the appropriate assigned frequency at all times.
- Staff will initiate communications by first stating who they are calling, and then who is making the call. At the completion of the transmission both parties will indicate that the transmission is completed by stating their call sign and “clear”.
- Except in the event of an emergency, all staff will listen for five seconds before transmitting to ensure there are no transmissions in progress. Other units’ transmissions will not be interrupted unless it is an emergency.
- When an emergency is declared, all non-emergency transmissions will cease until a supervisor clears the emergency.
- In the event of an emergency, establish communications on the primary frequency and immediately shift to the secondary frequency. State the nature of the emergency and what assistance is required. To ensure appropriate help arrives promptly, staff will transmit the following items as soon as possible:
 - Who they are and their location, in detail,
 - What assistance they need,
 - How many passengers they have and the nature of their condition(s),
 - Staff not involved with the emergency will stay off the radio; communications will be between Dispatch and the unit requesting assistance.
 - After initial contact, emergency communications may also take place between a supervisor and the unit, or between Dispatch and a supervisor.

Crisis Management Training – Training covers emergencies the driver may face while out on the bus. Topics of this training range from breakdowns to accidents to fire/evacuation to handling violent perpetrators. The following subjects are included in the training:

- Accidents
- Ill and injured passengers
- Lift operations
- Fire safety
- Vehicle evacuation
- Blood borne pathogens (bodily fluid spill containment and clean up)
- Handling conflict
- Basic crisis management steps
- Transit security

- Securing the vehicle

First Aid

Gaston County ACCESS provides basic First Aid training to drivers, including triage procedures, focusing on:

- Clearing air passages
- Controlling bleeding
- Blood borne pathogen protection
- Handling shock victims
- Reacting to seizures

3.3b. – TRAINING OF OTHER PERSONNEL

At a minimum, Gaston County ACCESS includes this as part of the training curriculum for agency personnel not directly involved in revenue service:

Maintenance

- Mechanic Skill Development
- Defensive Driving
- CPR/First Aid/Triage
- Incident response protocols

Scheduling and Dispatching

- Scheduling and Dispatching Skill development
- Customer Relations
- Radio Usage
- Crisis Management
- Incident response protocols

Management and Supervision

- Leadership Skills
- Coaching, Counseling and Discipline
- Crisis Management
- Accident Investigation
- Crime scene Preservation and evidence collection requirements

3.3c. – TRAINING DOCUMENTATION

The Gaston County ACCESS maintains complete and accurate records of all driver training and certification, as well as the training materials and grading mechanism. Drivers are required to demonstrate skill and performance

competency in the type of vehicle to which they are assigned as a part of training requirements. Because training transit operations personnel is not a onetime activity Gaston County ACCESS provides ongoing/recurring training necessary to reinforce policies and procedures as well as to provide a mechanism to brief drivers on new policies, procedures and/or regulations.

3.4 Security Awareness

3.4a. – TRANSIT WATCH

The Gaston County ACCESS supports Transit Watch and prepares all its employees to help promote safety and security within the community, region and nation.

Transit Watch was developed by the Federal Transit Administration (FTA) and encourages transit employees, transit riders and community members to be aware of their surroundings and alert to activities, packages or situations that seem suspicious. If something out of the ordinary and potentially dangerous is observed, it is to be reported immediately to the proper transit supervisor who may investigate and/or notify law enforcement authorities.

3.4b. – SUSPICIOUS ITEMS, VEHICLES, PEOPLE AND ACTIVITIES

Gaston County ACCESS understands that it has a role to play in being a part of the eyes, ears and liability of the community and a part of the community's first line of defense. Therefore, it is vigilant and is committed to train and encourage all employees to be on the lookout for any suspicious people, activities, vehicles, packages or substances. Because Gaston County ACCESS employees know their operating environment, know what is usual and unusual, they are taught to trust their gut reactions and report anything unusual, out of place or suspicious to dispatch/management who will then immediately pass this information on to the appropriate authorities.

All Gaston County ACCESS employees are "On the Look Out" for and report to the transit agency the following:

Suspicious Items

Public transportation systems deal with items left unattended in stations and on vehicles all the time. These unattended packages impose a tremendous burden on security. Although unattended packages are rarely linked to explosive devices, they all represent a potential threat and need to be examined systematically. If an unattended package is not deemed suspicious, it will be treated as lost property and handled according to agency protocol.

Gaston County ACCESS trains employees to identify items, packages and devices as suspicious if they meet any of the following criteria:

- Common objects in unusual locations

- Uncommon objects in common locations
- A threatening message is attached
- Unusual wires or batteries are visible
- Stains, leaks or powdery residue are evident
- Sealed with excessive amounts of tape or string
- Lopsided or lumpy in appearance
- Tanks, bottles or bags are visible
- A clock or timer is attached
- A strange odor, cloud, mist, vapor or sound emanates from it
- Addressed with cut and paste lettering and/or common words misspelled
- Have excessive postage attached
- Abandoned by someone who quickly leaves the scene
- No one in the immediate area claims it as theirs
- An active attempt has been made to hide it (i.e. Placed in an out-of-the-way location)

Once an item, package or device is determined to be suspicious

- the item is not touched or moved
- the area or vehicle is immediately evacuated uphill and upwind
- Radio and cell phones should not be used within 300 feet of the suspicious package
- system management is notified, and
- Appropriate action is taken (i.e., notifying of bomb analysis team).

Suspicious Vehicles

Gaston County ACCESS understands that vehicles (cars, trucks, boats, bikes) are frequently used in criminal or terrorist attacks. Therefore, agency employees are trained to be alert to suspicious vehicles in and around their work environment. Employees are told to report vehicles to system management and authorities when they notice any of the following:

- Show signs of forced entry
- Have altered or makeshift company insignia or license plates
- Are located in an unauthorized area or near a potentially catastrophic target
- Contain unusual equipment which could be used in a violent act
- Appear to be overloaded and/or have bulging tires or sagging frames
- Emit unusual odors, leaks or residues

Suspicious People and Activities

Gaston County ACCESS teaches its employees to be aware of suspicious people and activities. Employees are taught to focus on behaviors and not on a person's color, nationality, ethnicity or religion. The key concern in determining what is suspicious is always based on 1) where someone is, 2) when he or she is there, and 3) what he or she is doing. Employees are encouraged to trust their judgment based on their experience in and around

the community, and the transit system, and that it normally is a combination of factors taking place that will accurately identify a suspicious person or act.

Specific actions that are of concern and may meet the threshold of reporting as suspicious include people appearing to be:

- gathering intelligence
- running security tests
- attempting infiltration
- conducting a dry run/drill
- deploying assets

Employees are taught by Gaston County ACCESS to determine if a behavior is suspicious based on the following categories:

- attitude of the person
- apparel and accessories
- body language (e.g. reaction to uniformed presence)
- actions in and around crowds

3.5 Safety Data Acquisition/Analysis Procedures

To Gaston County ACCESS, understanding safety data is an important step toward allocating finite resources to implement safety program elements. Data on safety-related events such as

- passenger injuries or claims
- passenger complaints
- employee injuries
- accidents
- incidents
- EOL's
- turnarounds
- bus stops
- shelters

SECURITY PLAN-KEY CONTROL

Is used to determine trends in system operations. The ultimate goal is to identify and mitigate hazards before they cause accidents, thus boosting system performance and delivery of service to the riding public. Building requires Prox card for entry. Keys are on board and backup keys are in lead driver's office. See SOP for more details.



CONTINUITY OF OPERATIONS PLAN

5/18/21

Executive Summary

Continuity of operations (COOP) planning refers to the internal efforts an organization must take to assure there is capability to continue essential functions in response to a broad spectrum of emergencies or operational interruptions. These business interruptions may include, but are not limited to, fire, inclement weather or other acts of nature, a communicable disease outbreak, a range of threatened or actual attacks; routine business renovation or maintenance, mechanical failure or heating or other building systems, or extraordinary activities/events.

To prepare for such events, Gaston County Department of Health and Human Services-Social Services (DHHS-SS) developed a business continuity plan to ensure that regardless of the incident, essential functions and services will continue to operate and be provided in some capacity with minimal disruptions.

Mission Essential Functions

When the Continuity of Operations plan is enacted, DSS has three mission essential functions to meet. DSS’s three Mission essential functions are:

1. Assure the basic needs of children are met by providing protective services to children who are suspected to be or are abused, neglected, or dependent.
2. Assure the basic needs of older and/or disabled adults are met, and that they are not abused, neglected or exploited.
3. Provide delivery of benefits to eligible families sand individuals for the food and nutrition services program.

If an event disrupts normal business operations, the following mission essential functions must be continued and accordingly prioritized base don the categorizations below.

- **Category I Sustain Continuously (service must remain operational at all times)**
- **Category II Sustain or resume as quickly as possible (minutes to hours)**
- **Category III Defer until situation allows (days or weeks)**

MISSION ESSENTIAL FUNCTIONS	
Mission Essential Function	Priority
Assure the basic needs of children are met by providing protective services to children who are suspected to be or are abused, neglected, or dependent.	II
Assure the basic needs of older and/or disabled adults are met and that they are not abused, neglected or exploited.	II
Provide food and nutrition service benefits to eligible families and individuals.	III

Leadership Delegation of Authority

If the DSS Division Director or section administrators are unable to fulfill their duties and responsibilities associated with the position, a successor will assume the role. The pre-identification of successors ensures continuity of management and decision making.

Director	AAS Administrator	CFS Administrator	FNS Administrator
Order of Succession	Order of Succession	Order of Succession	Order of Succession
Angela Karchmer	Michael Coone	Tiyania Shands	

Michael Coone	Peg Argent	Michelle Jenkins	
Tina Stogner	Ruth Murphy		
Dana Sisk	Jennifer Butler		
	Twanna Littlejohn		
Legal			
Order of Succession			
Tereasa Osborne			
Clay Henley			

Concept of Operations

The primary objective of this plan is to ensure the continuation of DSS' essential functions during any emergency or crisis that disrupts normal business operations. DSS will strive to minimize disruptions to all services, but may temporarily need to shut down non essential functions in order to divert resources to mandated services.

Legal support services for DSS will be utilized as necessary to carry out the Mission Essential Functions. Attorneys and legal support personnel necessary to ensure the timely delivery of essential functions will be identified in the attached emergency contact information for personnel.

Activation and Relocation

If a situation arises that adversely impacts or threatens DHHS-SS' ability to perform essential functions, this plan may be activated by the 1) County Manager or his/her designee through the DHHS/DSS Director or his/her Successor or 2) based on circumstances, independently by the DHHS/DSS Director or his/her successor.

A decision by the DHHS/DSS Director or his/her successor to implement this plan will, if circumstances permit, will be coordinated with the County Manager. In situations where immediate activation is called for, a decision to do so will be communicated by the DHHS/DSS Director or his/her successor to the Assistant County Manager and the County Manager simultaneously with notification to the department's employees.

This plan may be activated in situations such as:

- **Anticipated threats and emergencies:** Some threats may afford advance warning that will permit orderly alert, notification and, if necessary, evacuation of employees.
- **Unanticipated threats and emergencies during non-business hours:** Arson, terrorism, HAZMAT incident or weather-related incident may occur without warning when most the staff is not at work. While operations from the normal place of business will not be possible, the majority of staff will be able to respond to instructions, including proper notice to relocate.
- **Unanticipated threats and emergencies during business hours:** Incidents may also occur without warning during normal office hours. In this case, implementation of the plan, if indicated by the circumstances, would normally be preceded by execution of the plan to move employees and customers out of the affected buildings expeditiously.
- **When a facility is inoperable:** If the department's usual operating facilities are rendered inoperable and are expected to remain as such for a period of 12 hours or more, the Director may decide to implement this plan. If an alternate facility is deemed necessary, it is the responsibility of DSS Leadership, County Administration and the Emergency Management Department to determine the best available space for relocation.

- **Pandemic:** In the event a pandemic impacts the ability of DSS to carry out operations due to significant absenteeism of the workforce, safety of the workforce or safety of the general public.

Roles and Responsibilities

Upon plan activation, there are three groups of individuals who will be responsible for ensuring the continuance of the mission essential functions defined in this plan. The full group includes both primaries and alternates for designated functions.

- **Leadership Group:** Initiates the plan activation and provides strategic leadership and decision making during implementation of the plan.
 - Communication- the Leadership team, in coordination with County Public Information, will use available communication channels to provide employees and the Public with information about the emergency including impacts to business operation and status updates.
- **Continuity Operations Team:** Provide leadership & decision making support to the leadership team, assure business operations during a disaster/emergency, and post event evaluation.
- **Other employees:** Employees in positions deemed vital to the continuation of mission essential functions will be notified of relocation, suspension or modification in the provision of services. Employees not required for the provision of essential services will be notified by their supervisor regarding reporting to work and possible alternative work assignments.
 - Anticipated threats/emergencies-if there is adequate time to prepare for the emergency or threat, employees will determine if there are any records or materials that need to be protected and secured and notify their supervisor or designee.
 - Unanticipated threats/emergencies- Employees will be notified as soon as possible and instructed where to report and how to receive updates.

The following lists the initial staff identified to assist with the department’s continuity of operations. Depending on the circumstances, not all individuals will be needed.

Group		Primary Contacts	
Leadership Group Provide strategic leadership and decision-making		<ul style="list-style-type: none"> • Angela Karchmer (DSS Director) • Steve Eaton (Public Health Director) 	
Continuity Operations Group Provide assistance with assuring mission essential programs are operational through planning and resource allocation.		<ul style="list-style-type: none"> • Michael Coone • Tina Stogner • Dana Sisk • Tiyania Shands • Teresa Osbourne 	
Other Key Staff Essential to the continuation of mission essential functions. Update Operations Group on status of mandated services.			
Economic Services	Children and Family Services	Adult and Aging Services	Support Services
Lisa Almond	Michelle Jenkins	Peg Argent	Dave Gunderman
Kim Shuemaker		Ruth Murphy	Lisa Jones
Angie Sanford		Twanna Littlejohn	Sally Hegljar
		Jennifer Butler	

Communications

All DHHS-SS functions can be provided with a laptop or PCS with internet access. If necessary, paper can be used and later scanned into state systems. The basic Communication requirements of the Division are below.

- **Internet Access**
- **Phones (cell or landlines)**
- **Fax lines**

Continuity of Mission Essential Functions

CHILD AND FAMILY SERVICES

It is expected and necessary for Children and Family Services to respond quickly in the event of an emergency or threat resulting from a variety of causes such as those that are human, natural, or technological in nature. In an incident, it is also expected that Children and Family Services are able to continue performing essential functions regardless of the circumstances or interruptions that may occur. It is for these reasons that Children and Family Services created this Continuity of Operations Plan (COOP). This plan not only identifies essential functions but also outlines what would need to be done in the three phases of Operation-Activation and relocation, Alternate facilities operations, and Reconstitution. This plan also incorporates the following elements into the plan that are associated with continuity planning:

- Departmental essential functions
- Staffing capabilities of the program
- Vital equipment and systems that would be needed in the event of an emergency
- Vital files, records, and databases that would be needed in an emergency

Department COOP Program Manager Information	
Primary COOP PM	Name: Tiyania Shands Position: Children and Family Services Administrator
Secondary COOP PM	Name: Michelle Jenkins Position: Coordinator
Secondary COOP PM	Name: NA Position: NA

ADULT AND AGING SERVICES

It is expected and necessary for Adult and Aging Services to respond quickly in the event of an emergency or threat resulting from a variety of causes such as those that are human, natural, or technological in nature. In an incident, it is also expected that Adult and Aging Services are able to continue performing essential functions regardless of the circumstances or interruptions that may occur. It is for these reasons that Adult and aging Services has created this Continuity of Operations Plan (COOP). This plan not only identifies essential functions but also outlines what would need to be done in the three phases of Operation-Activation and relocation, Alternate facilities operations, and Reconstitution. This plan also incorporates the following elements into the plan that are associated with continuity planning:

- Departmental essential functions
- Staffing capabilities of the program
- Vital equipment and systems that would be needed in the event of an emergency
- Vital files, records, and databases that would be needed in an emergency

COOP Program Manager Information	
Primary COOP PM	Name: Michael Coone Position: Adult and Aging Services Administrator
Secondary COOP PM	Name: Peg Argent Position: Adult Services Coordinator
Secondary COOP PM	Name: Ruth Murphy Position: Aging Services Coordinator

The below chart identifies individuals and positions critical to the continuation of essential services during an emergency.

COOP AAS LEADERSHIP TEAM		
POSITION	NAME	AREA OF RESPONSIBILITY
ACCESS Coordinator	Twanna Littlejohn	ACCESS
Intake Supervisor	Katie Moody	Intake
Adult Group Care Supervisor	Stephanie Stevenson	Adult Care Homes, Guardianship
Senior Nutrition Supervisor	Selina Pate	Senior Nutrition
APS Supervisor	Samantha Cheshire	APS
APS Supervisor	Jennifer Butler	APS

Authorities and References

- Daily Operations
The table below lists the different documents and policies that grant the organization the power to do what is expected on a day-to-day basis.

Daily Operations Guidelines and Policies

<https://policies.ncdhhs.gov/divisional/aging-and-adult> (All Programs)

NC Division of Health Services Regulation Manual

Special Assistance in Home Manual

Vital Equipment and Systems

Vital Equipment	Quantity	Description	Network or Services Required	Pre-Positioned at Alternate Facility	Hand Carried to Alternate location	Priority
Lap Tops			Y	N	Y	1
Cell Phones			Y	N	Y	1
Printers			Y	N	N	2
Landlines			Y	N	Y	2
Scanners			Y	N	N	2
Fax			Y	N	N	2

*Priority ranking is based on a scale from 1-3, with 1 being HIGH priority, 2 being medium priority, and 3 being low priority

Vital Files, Records, and Databases

Vital File, Record or Database	Form of Record (hardcopy, electronic)	Pre-positioned at alternate facility	Hand Carried to Alternate Location	Support for Organizational Essential Function	Priority
Intake Files	Electronic	GCDData			1
APS Files	Electronic, paper	GCDData			1
Guardianship Files	Electronic, paper	GCDData			1
Routematch	Routing Software	Cloud			2
Senior Nutrition	Paper				2

*Priority ranking is based on a scale from 1-3, with 1 being HIGH priority, 2 being medium priority, and 3 being low priority

Adult Protective Services

The mandated function of Adult Social Work Services is to protect older and disabled vulnerable adults from maltreatment whether living independently or in an Adult Care Home setting.

Adult Protection Services (APS) is mandated by law and statute by the State of NC (GS 108A). Counties are charged to receive reports of disabled adults who are abused, neglected or exploited and evaluate the need for protection.

DSS is mandated to provide Guardianship services to those who have been deemed incompetent by the courts, and for whom DSS is the named Guardian of Person by NC General Statute 35A.

DSS is mandated to investigate facilities where reports of abuse, neglect or exploitation of residents is alleged as directed by Statutes and Associated Laws Governing Adult Care Homes including Family Care Homes (131D).

While Senior Nutrition meals and Transportation services are not mandated, those clients who currently receive services may be dependent on them to stay nourished and healthy.

Implications if Not Conducted:

Vulnerable adults could suffer harm. Unaddressed allegations of abuse, neglect or exploitation could lead to illness or injury; incompetent adults would not have a representative to assure their care needs are met; and those allegedly being maltreated may continue to suffer harm. In regard to meals and transportation needs, the most at-risk homebound customers would not have adequate food for sustenance and those who are dependent on transportation for dialysis and chemotherapy could become critically ill.

Recovery Time Objective:

Within 24 hours this function should be provided continuously if possible. If not, there is risk of not receiving a report.

Operations

1. ADULT PROTECTIVE SERVICES (APS)

Adult Protective Services Intake receives reports of abuse, neglect and exploitation of vulnerable adults and determine whether a report meets the criteria to be screened-in for an APS evaluation. Reports will be taken via the Adult Services Intake Line (704) 862 7540. If the phones are not operational, calls will be routed to the After-Hours service. Screened-in cases will be initiated within the required timeframes as mandated by statute.

- a. **Guardianship** – There are very few wards living independently in the community. A social worker would contact these individuals to assure their needs are being met. If there are urgent basic needs that are not being met, the social worker will address these to remedy the situation. Most clients reside in facilities that are responsible for meeting their needs.
- b. **Adult Care Home Complaint Investigations** – Reports will be initiated within the required timeframes as mandated by statute.
- c. **Senior Citizens Nutrition Program** – Meal delivery will be prioritized to clients listed on the high-risk list. Congregate sites would be closed until the emergency is under control. Homebound clients will be provided shelf stable meals as needed to assure they have the necessary nutritional essentials. The number of meals provided and frequency shall be determined based on the emergency.

2. **ACCESS Transportation**- Transportation will be provided to those individuals currently receiving dialysis and chemotherapy.

ECONOMIC SERVICES

It is expected and necessary for Economic Services to respond quickly in the event of an emergency or threat resulting from a variety of causes such as those that are human, natural, or technological in nature. In an incident, it is also expected that Economic Service staff are able to continue performing essential functions regardless of the circumstances or interruptions that may occur. It is for these reasons that Economic Services has created this Continuity

of Operations Plan (COOP). This plan not only identifies essential functions but also outlines what would need to be done in the three phases of Operation-Activation and relocation, Alternate facilities operations, and Reconstitution. This plan also incorporates the following elements into the plan that are associated with continuity planning:

- Departmental essential functions
- Staffing capabilities of the program
- Vital equipment and systems that would be needed in the event of an emergency
- Vital files, records, and databases that would be needed in an emergency

COOP Program Manager Information	
Primary COOP PM	Name: Tina Stogner Position: Economic Services Administrator
Secondary COOP PM	Name: Lisa Almond Position: FNS Coordinator
Secondary COOP PM	Name: Kim Shuemaker Position: Medicaid Coordinator

I. FOOD AND NUTRITION SERVICES

The Food and Nutrition Services program is designed to promote the general welfare and to safeguard the health and well-being of the population by raising the levels of nutrition among low-income households. The FNS program will permit low-income households to obtain a more nutritious diet by increasing food purchasing power for all eligible households.

The Food and Nutrition Services is authorized by the Food and Nutrition Act of 2008.

Implications if Not Conducted:

An absence of food may cause a hardship to individuals and families and deprive them of adequate nutrition, and limited purchasing power.

Recovery Time Objective:

The modified or disaster food programs are usually implemented 7-10 days post disaster.

Operations

1. FOOD AND NUTRITION SERVICES (FNS)

- a. **Regular Food & Nutrition Services** – Individuals who have lost food during a natural disaster can request replacement benefits to supplant their food loss. This does not require any declaration by the United States Department of Agriculture (USDA).
- b. **Modified Food & Nutrition Services** – The State must request waivers of Food Stamp Program rules for the affected area. The number and extent of waivers granted vary from disaster to disaster and are contingent

upon the number of individuals affected and the size of the disaster. The USDA will allow the State to run the modified program only during the designated application-taking period.

- c. **Disaster Food & Nutrition Program** – The USDA requires each State to have a FNS Disaster Plan. Gaston County has a Disaster FNS plan that is in compliance with the State’s Plan. NC DHHS will contact the federal government, on behalf of the county, to request DSNAP (Disaster Supplemental Nutrition Aid Program). Once DSNAP is effective, the only individual eligibility requirements are: residency and must have experienced an adverse effect such as loss of food, lost income, and damage to home, etc.

Contact Information

Last Name	First Name	Office Phone	Cell Phone	Continuity of Operations Leadership Team
Karchmer	Angela	704-862-7930		
Coone	Michael	704-862-7663		
Stogner	Tina	704-862-7806		
Myers	Dottie	704-862-7893		
Sisk	Dana	704-862-7601		
Osbourne	Teresa	704-862-7537		
Shands	Tiyania	704-862-7980		

Annex A: Authorities and References

Authority, support, and justification for continuity of operations (COOP) planning are provided through the documents listed below.

Federal Guidance

Executive Order 12148–Federal Emergency Management. EO 12148 establishes Federal policies and coordinates civil emergency planning, management, and assistance functions. It also establishes the President’s role in working with State and local governments.

Executive Order 12472—Establishment of the National Communications System. EO 12472 establishes the National Communication Systems as a Federal interagency group assigned national security and emergency preparedness telecommunications responsibility throughout the full spectrum of emergencies. Responsibilities include planning, developing, and implementing enhancements to the national telecommunications infrastructure to achieve measurable improvements in survivability, interoperability, and operational effectiveness under all conditions. This is accomplished by effective management and by using national telecommunication resources to support the Government during any emergency.

Executive Order 12656—Assignment of Emergency Preparedness Responsibilities. EO 12656 is the foundation of these mandates. It requires Federal agencies to develop plans and procedures that ensure the survival of the U.S. Constitution and American Government by enabling them to continue to provide essential functions and services during and following a disaster or emergency. Executive Order 12656 assigns national security management preparedness responsibilities to Federal departments and agencies.

Presidential Decision Directive 63. PDD–63 is a national-level effort to ensure the security of the increasingly vulnerable and interconnected infrastructure of the United States. It requires departments and agencies to develop a plan for protecting critical infrastructures, including telecommunications, banking and finance, energy, transportation, and other essential functions and services. The directive addresses those services provided by Federal, State, and local governments.

Presidential Decision Directive 67. PDD–67 directs the Federal executive branch departments and agencies to have a viable COOP Plan and capability. Departments and agencies must be able to operate at their alternative facilities with or without warning no longer than 12 hours after the disaster and to maintain sustained operations for a minimum period of up to 30-days. The plans identify those requirements necessary to support the primary functions, such as emergency communications, establishing a chain of command, and delegations of authority.

Executive Order 13228—Establishing the Office of Homeland Security and the Homeland Security Council. EO 13228 establishes the Office of Homeland Security in response to the terrorist attacks on September 11, 2001. Responsibilities of the office include developing and coordinating the implementation of a comprehensive national strategy to secure the United States from terrorist threats or attacks. The office shall coordinate the executive branch’s efforts to detect, prepare for, prevent, protect against, respond to, and recover from terrorist attacks within the United States.

Executive Order 13231—Critical Infrastructure Protection in the Information Age. EO 13231 establishes a protection program that consists of continual efforts to secure information systems for critical infrastructure that includes emergency preparedness communications. To achieve this policy, there will be a senior executive branch committee to coordinate that will have cognizance over all Federal efforts and programs involving continuity of operations, continuity of government, and Federal department and agency information systems protection.

Robert T. Stafford Disaster Relief and Emergency Assistance Act, Amended (U.S. Code Title 42 Section 5121). This act provides for an orderly and continual means of assistance by the Federal Government to State and local governments for carrying out their responsibilities to alleviate the suffering and damage that result from disasters. 42 USC 5121 encourages the development of comprehensive disaster preparedness and assistance plans, programs, capabilities, and organizations by the States and local governments.

U.S. National Archives & Records Administration (NARA) Code of Federal Regulations. The NARA Code of Federal Regulations (CFR), Subchapter B, Records Management, provides guidance and prescribes

policies for records management programs relating to record creation and maintenance, adequate documentation, and proper record disposition.

Homeland Security Presidential Directive–1. The Homeland Security Council (HSC) shall ensure coordination of all homeland security-related activities among executive departments and agencies and promote the effective development and implementation of all homeland security policies. The HSC Principals Committee (HSC/PC) shall be the senior interagency forum under the HSC for homeland security issues. The HSC Deputies Committee (HSC/DC) shall serve as the senior sub-Cabinet interagency forum for consideration of policy issues affecting homeland security. HSC Policy Coordination Committees (HSC/PCC) shall coordinate the development and implementation of homeland security policies by multiple departments and agencies throughout the Federal Government and shall coordinate those policies with State and local government.

Homeland Security Presidential Directive–3. The Homeland Security Advisory System provides warnings in the form of a set of graduated “Threat Conditions” that would increase as the risk of the threat increases. At each threat condition, Federal departments and agencies implement a corresponding set of “Protective Measures” to further reduce vulnerability or increase response capability during a period of heightened alert. This system is intended to create a common vocabulary, context, and structure for an ongoing national discussion about the nature of the threats that confront the homeland and the appropriate measures that should be taken in response. It seeks to inform and facilitate decisions appropriate to different levels of government and to private citizens at home and at work.

FEMA Federal Preparedness Circular (FPC) No. 65–Federal Executive Branch Continuity of Operations (COOP). FPC 65 provides guidance to Federal executive branch departments and agencies for developing viable and executable contingency plans for continuity of operations. COOP planning facilitates the performance of department/agency essential functions during any emergency or situation that may disrupt normal operations. FPC 65 requires that each agency appoint a senior Federal Government executive as an emergency coordinator to serve as program manager and agency point of contact for coordinating agency COOP activities. This ensures continuous performance of an agency’s essential functions during an emergency and protects essential facilities, equipment, records, and other assets. The actions recommended in FPC 65 will reduce disruptions to operations and loss of life, and minimize damage and losses. It achieves a timely and orderly recovery from an emergency and resumption of full service to customers.

Federal Preparedness Circular No. 66–Test, Training and Exercise (TT&E) Program for Continuity of Operations (COOP). FPC 66 provides guidance to Federal executive branch departments and agencies for use in developing viable and executable TT&E programs to support the implementation and validation of COOP plans. These activities are important elements of a comprehensive emergency preparedness program necessary to improve the ability of agencies to effectively manage and execute their COOP plans.

Federal Preparedness Circular No. 67–Acquisition of Alternate Facilities for Continuity of Operations (COOP). FPC 67 provides guidance to Federal executive branch departments and agencies for acquiring alternative facilities to support their COOP. FPC 67 requires agencies to designate alternative operating facilities as part of their COOP plans and prepare their personnel for the possibility of sudden relocation of essential functions or COOP contingency staff to these facilities should an emergency necessitate that action.

State Guidance

North Carolina (N.C.) General Statutes 58-9; 118-38; 143-166.1, 143-507 through

517, 153-A and 160-A

N.C. General Statutes 166A

N.C. Executive Order 72.

N.C. General Statutes 115C-242 (6)

N.C. General Statutes Article 36A of Chapter 14

State of North Carolina Executive Order 43, North Carolina Emergency Response
Commission (NCERC), April 7, 1987

North Carolina General Statute, Chapter 95, Article 8, The Hazardous Chemical
Right-To-Know Act

North Carolina Hazardous Materials Right-To-Know Law

Annex B: Alternate Location/Facility Information

The Community has designated one primary Emergency Relocation Site (ERS) to support the Emergency Relocation Group (ERG) following an event that disables the infrastructure supporting Community activities that occur at town hall and/or department offices buildings. The ERS should be used when town hall and/or department offices buildings are closed for normal business activities. The relocation site has adequate space, the necessary equipment, and the connectivity to support relocating each ERG responsible for performing essential functions.

Emergency Relocation Site Information

Address	330 Dr. Martin Luther King Jr Way
Phone Number	704-862-7663
Relocation Site Official	Michael Coone/Administrator
Directions	Head east on W. Mauney Ave toward N Highland St. Turn R onto N. Highland St. Turn L onto Airline Ave. Continue onto Long Ave. Turn left on Dr. MLK Jr Way. Gaston DSS building will be on your right.
Map	

Annex D: Definitions and Acronyms

The following terms or phrases are found in this document.

Advance Team. ERG personnel who immediately deploy to the Emergency Relocation Site (ERS) upon receiving a COOP warning or activation, to initiate actions at the ERS in preparation for the arrival of the main body of Emergency Personnel. Advance Team plus Emergency Personnel constitute an ERG.

Business Continuity Plan (BCP). The BCP provides procedures for sustaining an organization's business functions during and after a disruption. An example of a business function may be an organization's payroll process or consumer information process. A BCP may be written for a specific business process or may address all key business processes.

Business Recovery Plan (BRP). The BRP addresses the restoration of business processes after an emergency, but unlike the BCP, lacks procedures to ensure continuity of critical processes throughout an emergency or disruption.

Continuity of Operations (COOP) Plan. An action plan that provides for the immediate continuity of essential functions of an organization at an alternative facility for up to 30-days in the event an emergency prevents occupancy of its primary facility.

Disaster Recovery Plan (DRP). The DRP applies to major, usually catastrophic, events that deny access to the normal facility for an extended period. Frequently, DRP refers to an IT-focused plan designed to restore operability of the target system, application, or computer facility at a relocation site after an emergency.

Emergency Personnel. The key principals and staff members of the ERG, responsible for the execution of essential functions. Advance Team plus Emergency Personnel constitute an ERG.

Emergency Relocation Group (ERG). Predesignated principals and staff who move to a relocation site to continue essential functions in the event that locations are threatened or incapacitated. The ERG comprises Advance Team plus Emergency Personnel.

Emergency Relocation Site (ERS). A remote alternative facility to which the ERG moves to continue essential functions in the event that traditional work sites are incapacitated.

Essential functions. Essential functions are those functions, stated or implied, that are required to be performed by statute or Executive order, or other functions deemed essential by the heads of principal organizational elements (i.e., administrators, office directors, and division directors).

Occupant Emergency Plan (OEP). The OEP provides the response procedures for occupants of a facility in the event a situation poses a threat to the health and safety of personnel, the environment, or property. Such events include a fire, hurricane, criminal attack, or a medical emergency.

Point of Contact (POC). The designated focal point for actions involving a specific plan, as in "COOP POC."

Relocation Site (RS) Support Official. Serves as the COOP point of contact at each ERS. Responsible for the readiness and operational condition of the ERS, as appropriate, including telecommunications, infrastructure, and equipment; and support the billeting and meal needs of the ERG.

Senior COOP Official. Serves as the COOP point of contact. Responsible for coordinating implementation of the COOP Plan; initiating appropriate notifications inside and outside the Agency during COOP Plan implementation; being the point of contact for all COOP training, testing, and exercising; assisting ERG efforts at the ERS; and initiating recovery of the Agency as part of reconstitution.

SIGNATURE AND CERTIFICATION PAGE

The Board of _____ County Commissioners has reviewed each of the Six Plans comprised in the System Safety Plan (SSP). During this review suggestions were made and the Plan was updated to reflect the suggestions.

_____, Transit Director

Date:

I hereby certify this Plan for
_____ Public Transportation System.

CHAIR BOARD SIGNATURE
Authorized Representative

Date: