



**GASTON COUNTY**  
BUILDING AND DEVELOPMENT SERVICES

**VICINITY MAP**  
**REZ-25-03-25-00223**

**LEGEND**

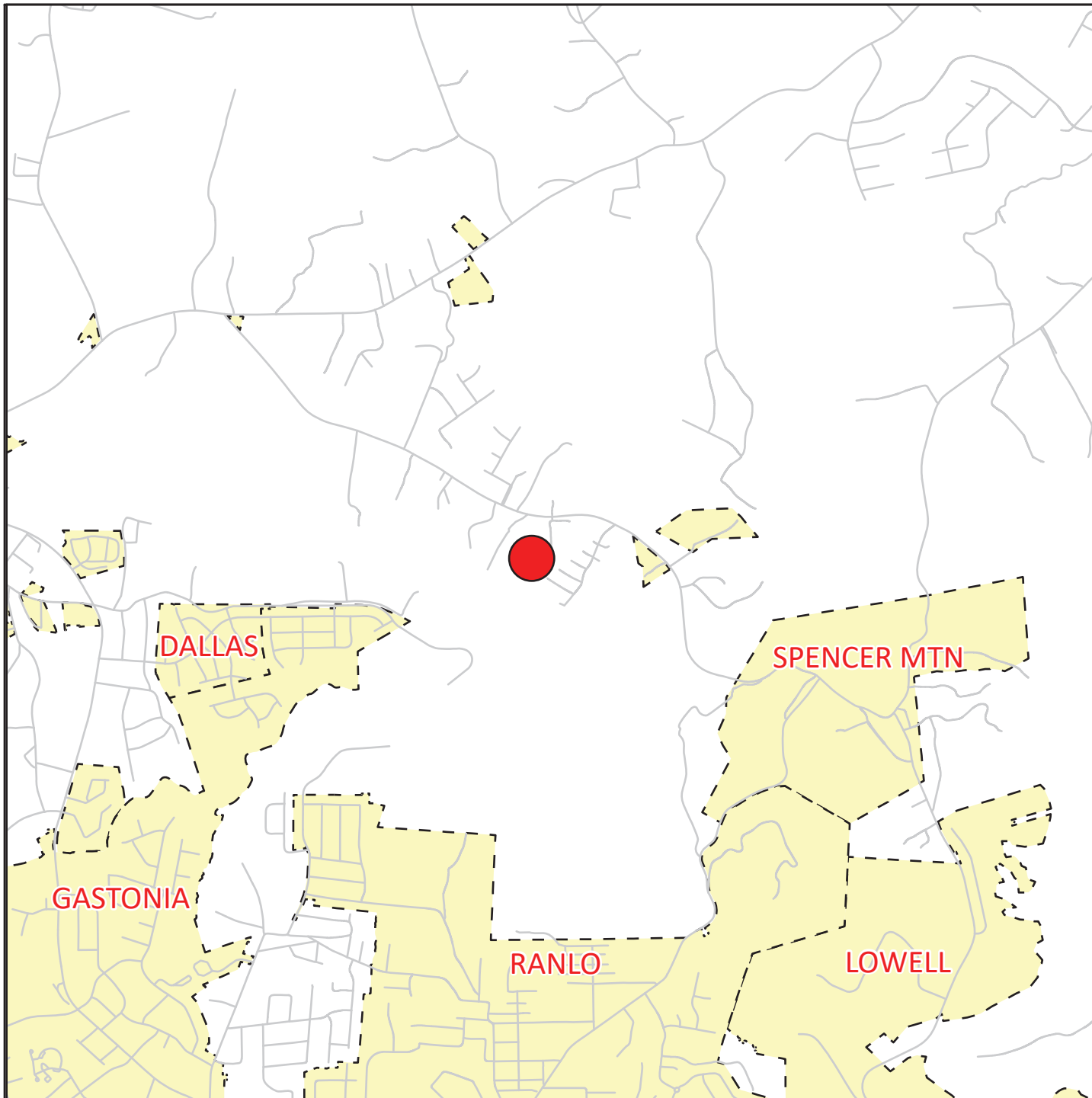
— Roads

▤ Municipalities

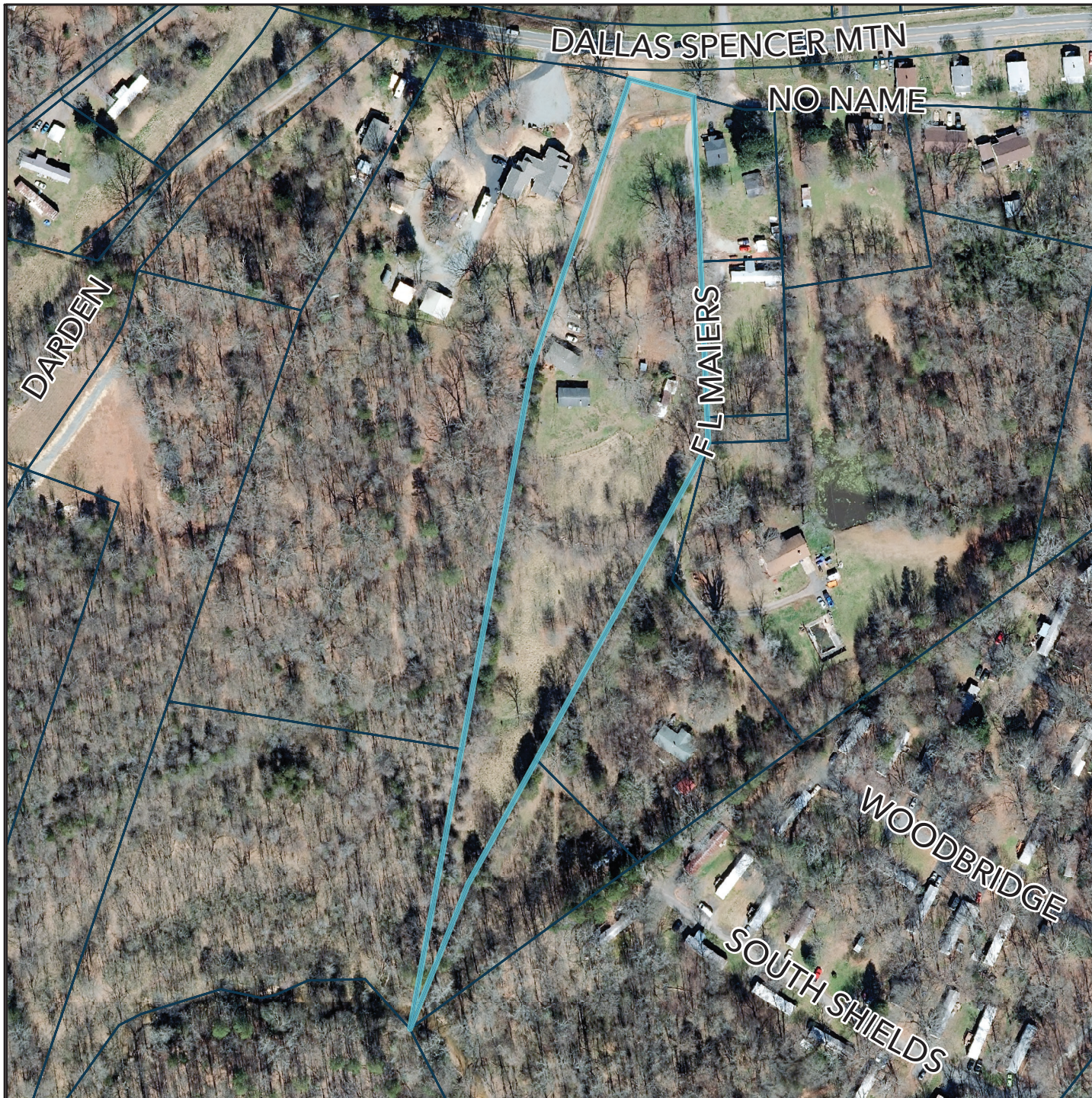
● Subject Parcel

The information provided on this map is not intended to be considered as a legal document or description. The GIS data provided by Gaston County is made without warranty. Primary sources from which this data was compiled must be consulted for verification of the information contained within. This map may not be resold or otherwise used for trade or commercial purposes without the expressed written consent of Gaston County, in accordance with NCGS

0 0.170.35 0.7 Miles







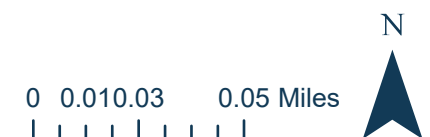
**GASTON COUNTY**  
BUILDING AND DEVELOPMENT SERVICES

**ORTHOPHOTO MAP**  
**REZ-25-03-25-00223**

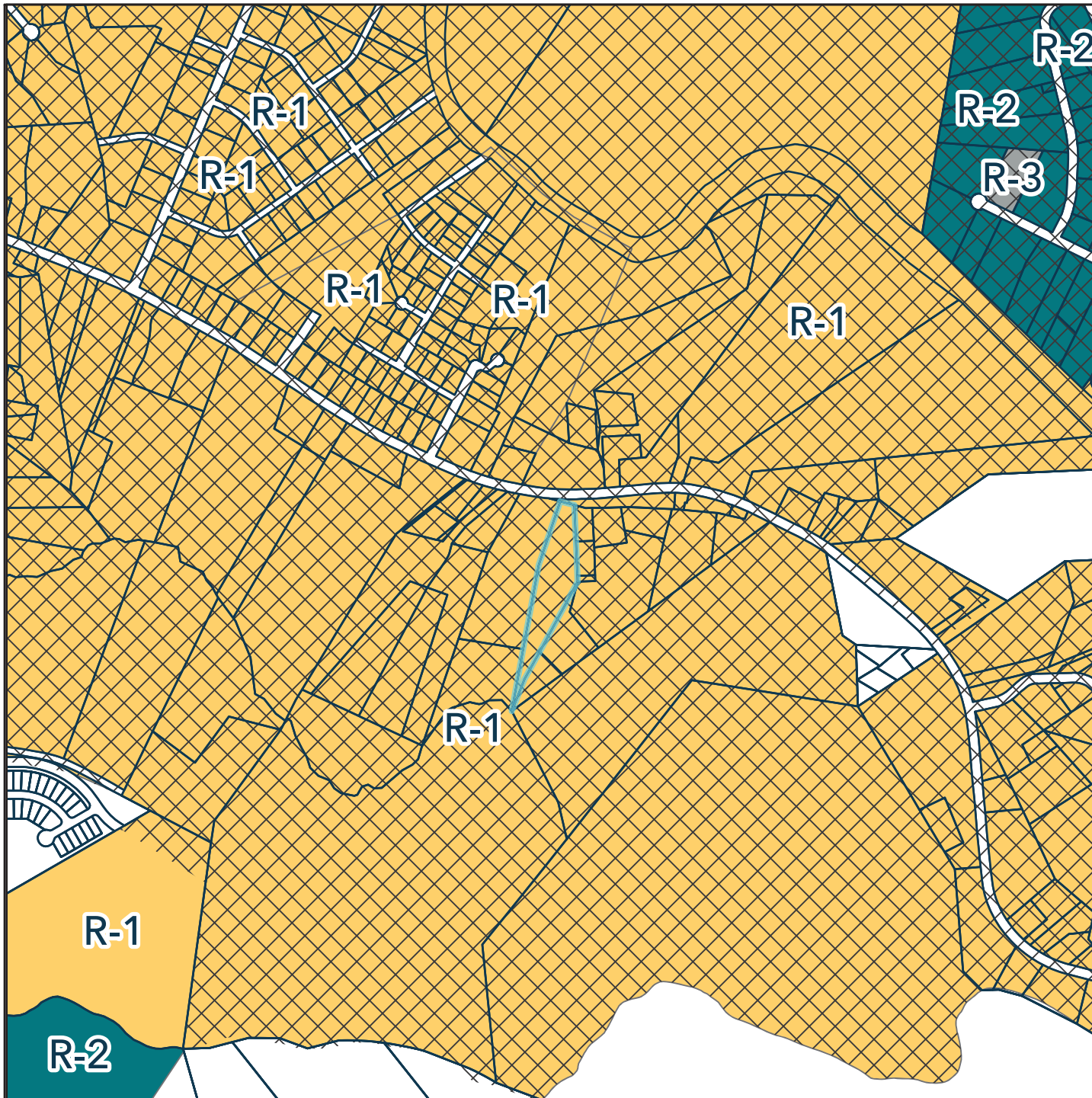
### LEGEND

- Roads
- Parcels
- ▭ Subject Property

The information provided on this map is not intended to be considered as a legal document or description. The GIS data provided by Gaston County is made without warranty. Primary sources from which this data was compiled must be consulted for verification of the information contained within. This map may not be resold or otherwise used for trade or commercial purposes without the expressed written consent of Gaston County, in accordance with NCGS







## Zoning Map REZ-25-03-25-00223

### LEGEND

□ Parcels

#### ZONE TYPE

■ R-1

■ R-2

■ R-3

#### TYPE

XX US OVERLAY

□ Subject Parcel

The information provided on this map is not intended to be considered as a legal document or description. The GIS data provided by Gaston County is made without warranty. Primary sources from which this data was compiled must be consulted for verification of the information contained within. This map may not be resold or otherwise used for trade or commercial purposes without the expressed written consent of Gaston County, in accordance with NCGS 132-10.

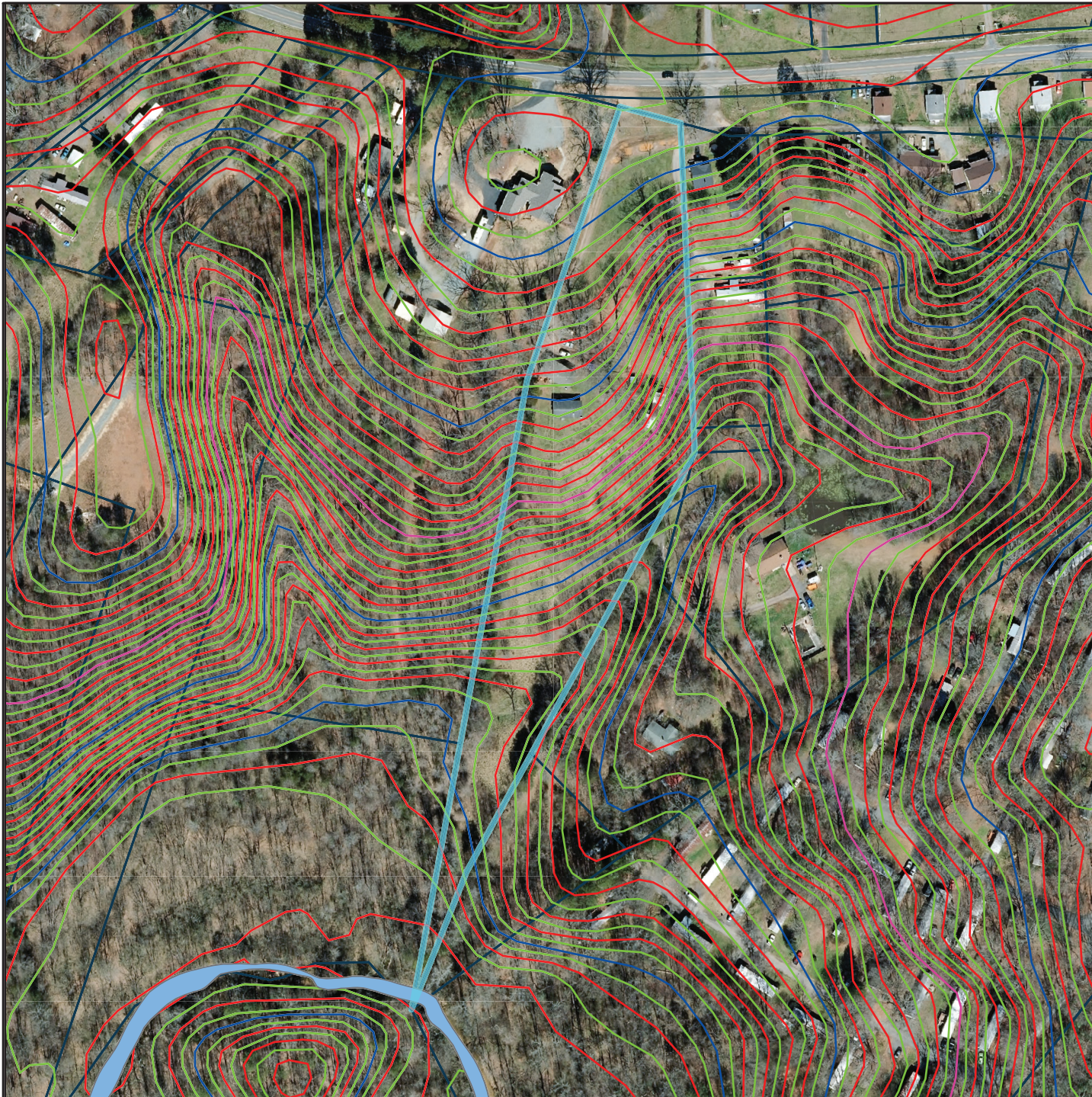
0 0.050.1 0.2 Miles



N











## Environmental Map REZ-25-03-25-00223

### LEGEND

-  Parcels
-  Rivers
-  100ft Contours
-  2ft Contours
-  4ft Contours
-  20ft Contours
-  Subject Parcel

The information provided on this map is not intended to be considered as a legal document or description. The GIS data provided by Gaston County is made without warranty. Primary sources from which this data was compiled must be consulted for verification of the information contained within. This map may not be resold or otherwise used for trade or commercial purposes without the expressed written consent of Gaston County, in accordance with NCGS 132-10.

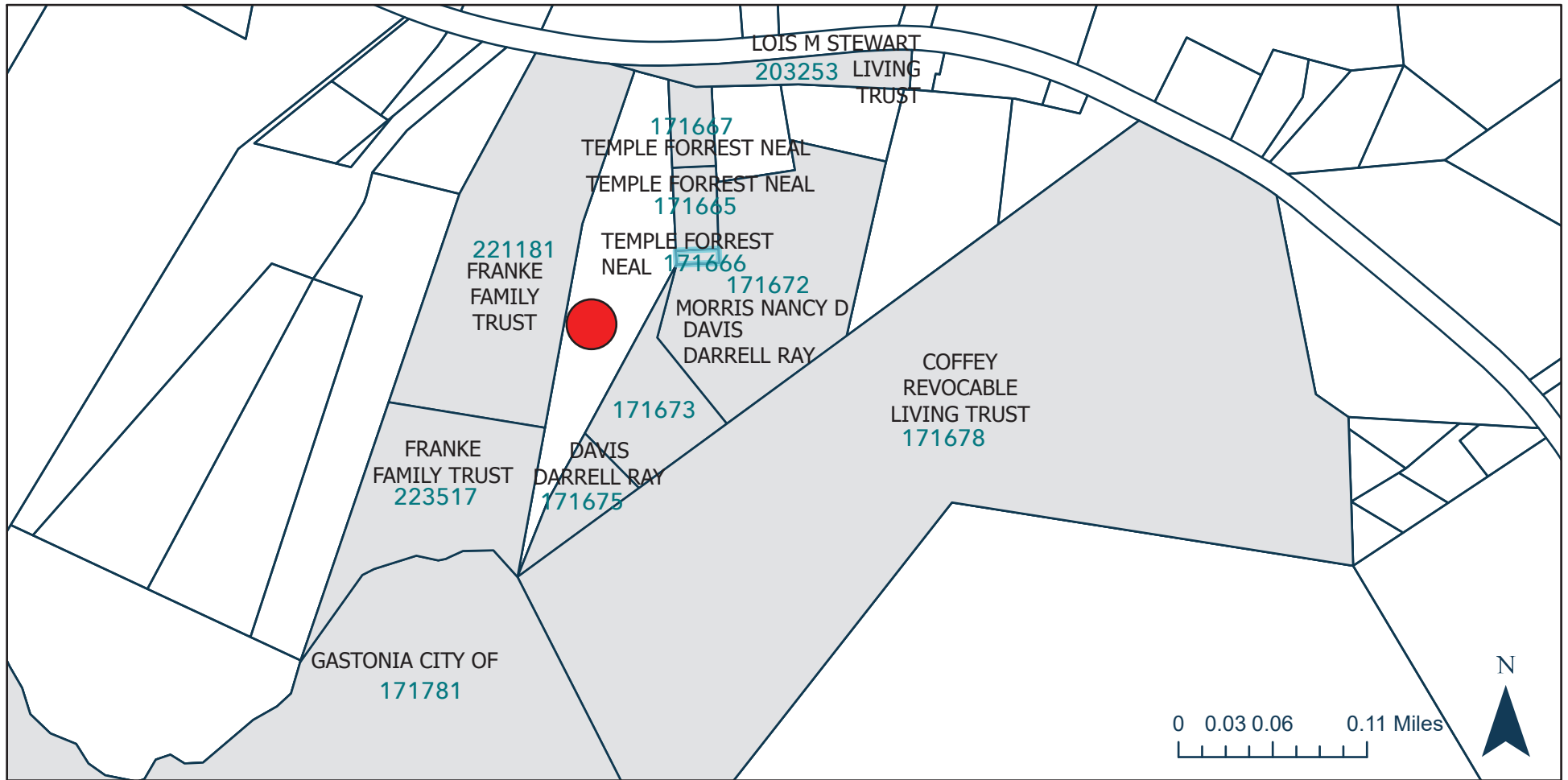
0 0.010.03 0.05 Miles



N







## SUBJECT & ADJACENT PROPERTIES MAP | REZ-25-03-25-00223

### LEGEND

 Subject Parcel

The information provided on this map is not intended to be considered as a legal document or description. The GIS data provided by Gaston County is made without warranty. Primary sources from which this data was compiled must be consulted for verification of the information contained within. This map may not be resold or otherwise used for trade or commercial purposes without the expressed written consent of Gaston County, in accordance with NCGS 132-10.