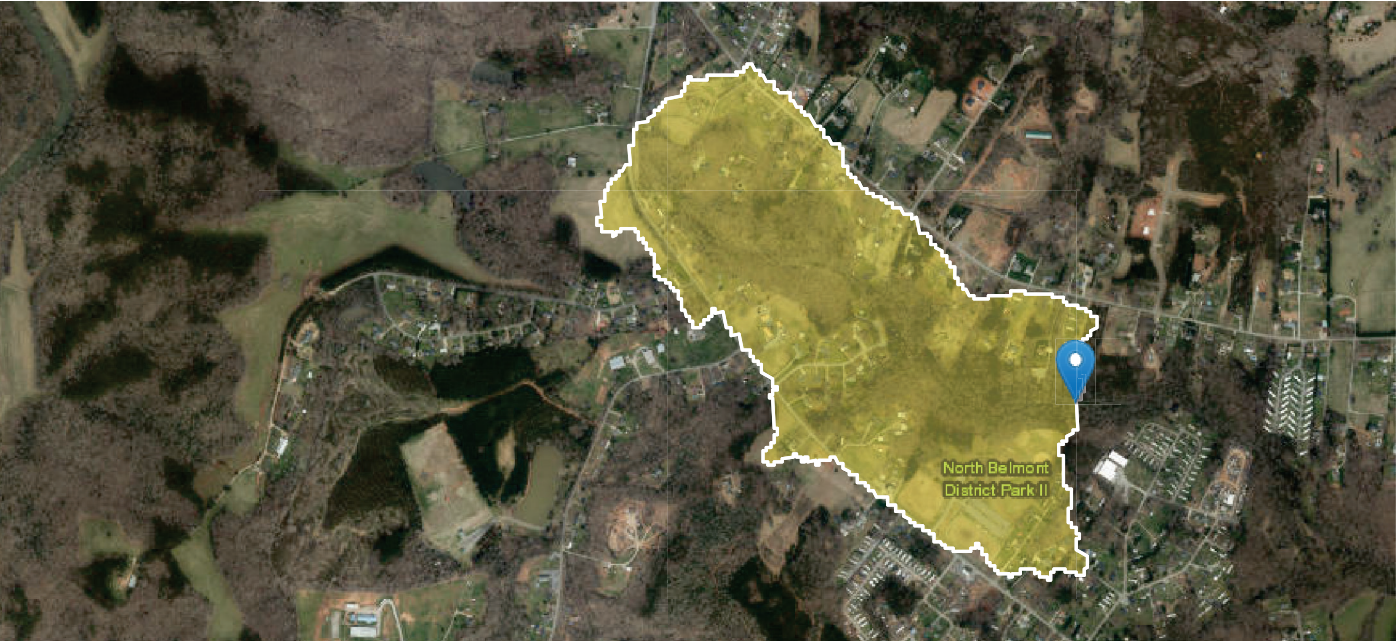


Fites Creek Drainage Area at east end of North Belmont Park

Region ID: NC
Workspace ID: NC20220919152554053000
Clicked Point (Latitude, Longitude): 35.29452, -81.06818
Time: 2022-09-19 11:26:18 -0400



Delineation for Stormwater Wetland to treat runoff from North Belmont Park. Draining to the proposed wetland is 37.5 acres

Collapse All

➤ Basin Characteristics

Parameter Code	Parameter Description	Value	Unit
BASINPERIM	Perimeter of the drainage basin as defined in SIR 2004-5262	3.55	miles
BSLDEM30FT	Mean basin slope, based on slope percent grid	6.36	percent
CSL10_85fm	Change in elevation between points 10 and 85 percent of length along main channel to basin divide divided by length between points ft per mi	88.54	feet per mi
DRNAREA	Area that drains to a point on a stream	0.28	square miles
ELEV	Mean Basin Elevation	766	feet
ELEVMAX	Maximum basin elevation	829	feet
I24H50Y	Maximum 24-hour precipitation that occurs on average once in 50 years	6.54	inches
LC01BARE	Percentage of area barren land, NLCD 2001 category 31	0	percent
LC01CRPHAY	Percentage of cultivated crops and hay, classes 81 and 82, from NLCD 2001	11.8	percent
LC01DEV	Percentage of land-use from NLCD 2001 classes 21-24	70.3	percent

Parameter Code	Parameter Description	Value	Unit
LC01FOREST	Percentage of forest from NLCD 2001 classes 41-43	17.9	percent
LC01HERB	Percentage of herbaceous upland from NLCD 2001 class 71	0	percent
LC01IMP	Percent imperviousness of basin area 2001 NLCD	6.78	percent
LC01SHRUB	Percent of area covered by shrubland using 2001 NLCD	0	percent
LC01WATER	Percentage of open water, class 11, from NLCD 2001	0	percent
LC01WETLND	Percentage of wetlands, classes 90 and 95, from NLCD 2001	0	percent
LC06BARE	Percent of area covered by barren rock using 2006 NLCD	0	percent
LC06DEV	Percentage of land-use from NLCD 2006 classes 21-24	70.3	percent
LC06FOREST	Percentage of forest from NLCD 2006 classes 41-43	17.9	percent
LC06GRASS	Percent of area covered by grassland/herbaceous using 2006 NLCD	0	percent
LC06IMP	Percentage of impervious area determined from NLCD 2006 impervious dataset	6.78	percent
LC06PLANT	Percent of area in cultivation using 2006 NLCD	11.8	percent
LC06SHRUB	Percent of area covered by shrubland using 2006 NLCD	0	percent
LC06WATER	Percent of open water, class 11, from NLCD 2006	0	percent
LC06WETLND	Percent of area covered by wetland using 2006 NLCD	0	percent
LC11BARE	Percentage of barren from NLCD 2011 class 31	0	percent
LC11CRPHAY	Percentage of cultivated crops and hay, classes 81 and 82, from NLCD 2011	11.8	percent
LC11DEV	Percentage of developed (urban) land from NLCD 2011 classes 21-24	70.3	percent
LC11FOREST	Percentage of forest from NLCD 2011 classes 41-43	17.9	percent
LC11GRASS	Percent of area covered by grassland/herbaceous using 2011 NLCD	0	percent
LC11IMP	Average percentage of impervious area determined from NLCD 2011 impervious dataset	6.8	percent
LC11SHRUB	Percent of area covered by shrubland using 2011 NLCD	0	percent
LC11WATER	Percent of open water, class 11, from NLCD 2011	0	percent
LC11WETLND	Percentage of wetlands, classes 90 and 95, from NLCD 2011	0	percent
LC92FOREST	Percentage of forest from NLCD 1992 classes 41-43	6.4	percent
LFPLENGTH	Length of longest flow path	0.998	miles
LU92BARE	Percent of area covered by barren rock using 1992 NLCD	0	percent
LU92DEV	Percent of area covered by all densities of developed land using 1992 NLCD	72.3	percent
LU92PLANT	Percent of area in cultivation using 1992 NLCD	21.3	percent
LU92WATER	Percent of area covered by water using 1992 NLCD	0	percent
LU92WETLN	Percent of area covered by wetland using 1992 NLCD	0	percent
MINBELEV	Minimum basin elevation	708	feet
OUTLETELEV	Elevation of the stream outlet in feet above NAVD88	709	feet
PCTREG1	Percentage of drainage area located in Region 1 - Piedmont / Ridge and Valley	100	percent
PCTREG2	Percentage of drainage area located in Region 2 - Blue Ridge	0	percent
PCTREG3	Percentage of drainage area located in Region 3 - Sandhills	0	percent
PCTREG4	Percentage of drainage area located in Region 4 - Coastal Plains	0	percent

Parameter Code	Parameter Description	Value	Unit
PCTREG5	Percentage of drainage area located in Region 5 - Lower Tifton Uplands	0	percent
PRECIP	Mean Annual Precipitation	45.6	inches
PROTECTED	Percent of area of protected Federal and State owned land	0	percent
SSURGOA	Percentage of area of Hydrologic Soil Type A from SSURGO	0	percent
SSURGOB	Percentage of area of Hydrologic Soil Type B from SSURGO	87.4	percent
SSURGOC	Percentage of area of Hydrologic Soil Type C from SSURGO	5.3	percent
SSURGOD	Percentage of area of Hydrologic Soil Type D from SSURGO	7.3	percent

➤ Urban Peak-Flow Statistics

Urban Peak-Flow Statistics Parameters [Region 1 Piedmont Urban under 3 sqmi 2014 5030]

Parameter Code	Parameter Name	Value	Units	Min Limit	Max Limit
DRNAREA	Drainage Area	0.28	square miles	0.1	3
LC06IMP	Percent Impervious NLCD2006	6.78	percent	0	47.9

Urban Peak-Flow Statistics Flow Report [Region 1 Piedmont Urban under 3 sqmi 2014 5030]

Pll: Prediction Interval-Lower, Plu: Prediction Interval-Upper, ASEp: Average Standard Error of Prediction, SE: Standard Error (other -- see report)

Statistic	Value	Unit	Pll	Plu	ASEp
Urban 50-percent AEP flood	81.4	ft ³ /s	43.9	151	31.9
Urban 20-Percent AEP flood	129	ft ³ /s	78.2	213	25.4
Urban 10-percent AEP flood	164	ft ³ /s	101	265	25
Urban 4-percent AEP flood	210	ft ³ /s	124	355	27
Urban 2-percent AEP flood	245	ft ³ /s	139	432	29.3
Urban 1-percent AEP flood	281	ft ³ /s	150	525	32.1
Urban 0.5-percent AEP flood	317	ft ³ /s	161	624	35.1
Urban 0.2-percent AEP flood	370	ft ³ /s	179	763	37.5

Urban Peak-Flow Statistics Citations

Feaster, T.D., Gotvald, A.J., and Weaver, J.C., 2014, Methods for estimating the magnitude and frequency of floods for urban and small, rural streams in Georgia, South Carolina, and North Carolina, 2011 (ver. 1.1, March 2014): U.S. Geological Survey Scientific Investigations Report 2014–5030, 104 p.
(<http://pubs.usgs.gov/sir/2014/5030/>)

USGS Data Disclaimer: Unless otherwise stated, all data, metadata and related materials are considered to satisfy the quality standards relative to the purpose for which the data were collected. Although these data and associated metadata have been reviewed for accuracy and completeness and approved for release by the U.S. Geological Survey (USGS), no warranty expressed or implied is made regarding the display or utility of the data for other purposes, nor on all computer systems, nor shall the act of distribution constitute any such warranty.

USGS Software Disclaimer: This software has been approved for release by the U.S. Geological Survey (USGS). Although the software has been subjected to rigorous review, the USGS reserves the right to update the software as needed pursuant to further analysis and review. No warranty, expressed or implied, is made by the USGS or the U.S. Government as to the functionality of the software and related material nor shall the fact of release constitute any such warranty. Furthermore, the software is released on condition that neither the USGS nor the U.S. Government shall be held liable for any damages resulting from its authorized or unauthorized use.

USGS Product Names Disclaimer: Any use of trade, firm, or product names is for descriptive purposes only and does not imply endorsement by the U.S. Government.

Application Version: 4.10.1

StreamStats Services Version: 1.2.22

NSS Services Version: 2.2.1