



Luminaire Schedule							
Symbol	Qty	Label	Arrangement	Lumens/Lamp	LLF	Lum. Watts	Description
	1	HP-SH2	Twin	16182	0.950	147.489	NLES AL1212 Back Shield, 2-H
	8	G	Single	5692.9	0.950	42.2406	NLES WP4054

Numeric Summary							
Label	CalcType	Units	Avg	Max	Min	Avg/Min	Max/Min
Site	Illuminance	Fc	0.57	12.1	0.0	N.A.	N.A.
Parking Lot	Illuminance	Fc	1.87	10.2	0.1	18.70	102.00

Luminaire Location Summary		
LumNo	Label	Z
1	G	15.5
2	G	15.5
3	G	15.5
4	G	15.5
5	G	15.5
6	G	15.5
7	G	15.5
8	G	11
9	HP-SH2	27

Notes:

Plan Notes:

Calculations at Ground Level (10' x 10' Grid Spacing). Refer to luminaire location summary for mounting heights of each fixture. Pole mounted fixtures include a 2ft concrete base. Mounting heights indicated on luminaire location summary is a total A.F.G. height.

General Notes:

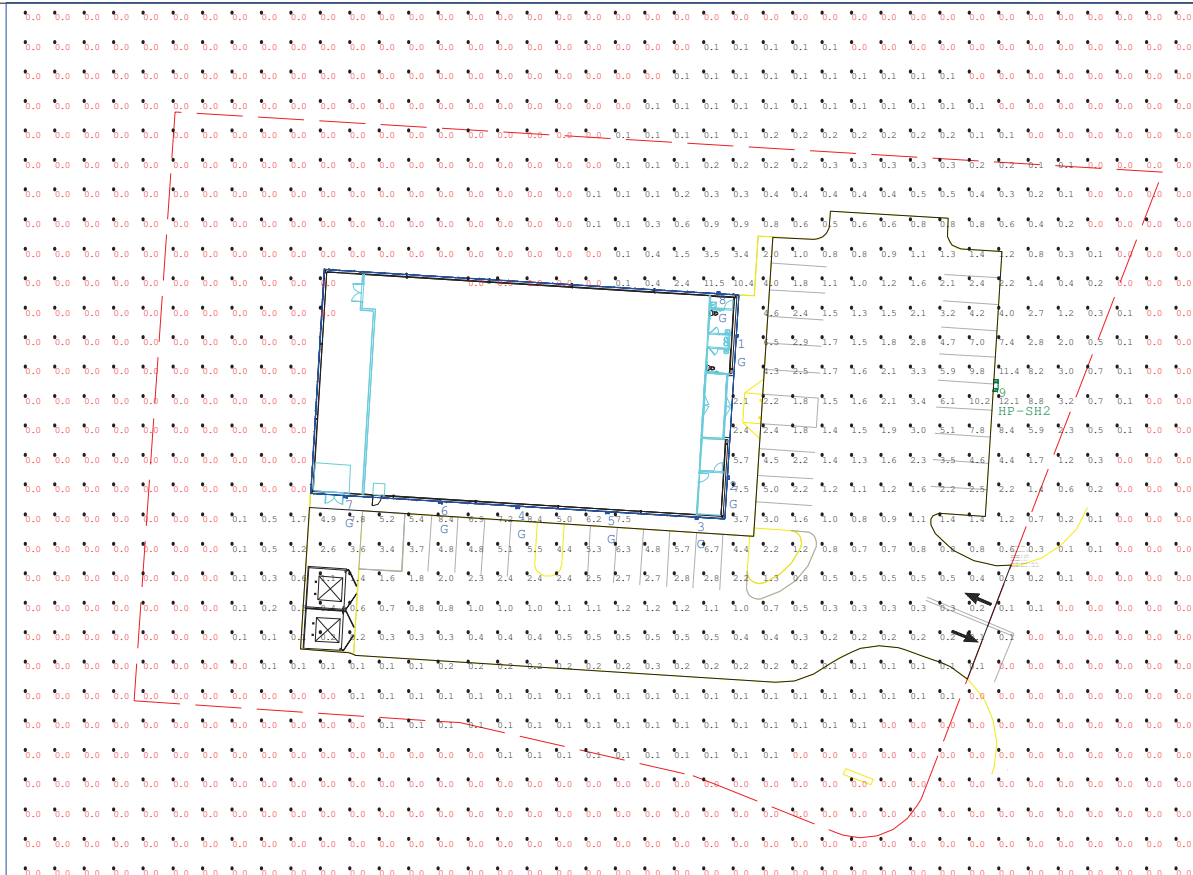
Due to changing lighting ordinances it is the contractors responsibility to submit the site photometrics & luminaire specs to the local inspector before ordering to ensure this plan complies with local lighting ordinances. This lighting design is based on information supplied by others. Changes in electrical supply, area geometry & objects within the lighted area may produce illumination values different from the predicted results shown on this layout. This layout is based on .IES files that were lab tested or computer generated, actual results may vary.

Project name: Dollar General
Gastonia NC 31567 Lighting Layout
Prepared for: Advanced Engineering
Prepared by: Brent M. Finley, LC



NLES - INC.

2586 W AMERICAN DRIVE, #1
NEENAH, WI 54956
PH 920-840-6054 / FAX 920-840-6424
www.nlesinc.com





Luminaire Location Summary		
LumNo	Label	Z
1	G	15.5
2	G	15.5
3	G	15.5
4	G	15.5
5	G	15.5
6	G	15.5
7	G	15.5
8	G	11
9	HP-SH2	27

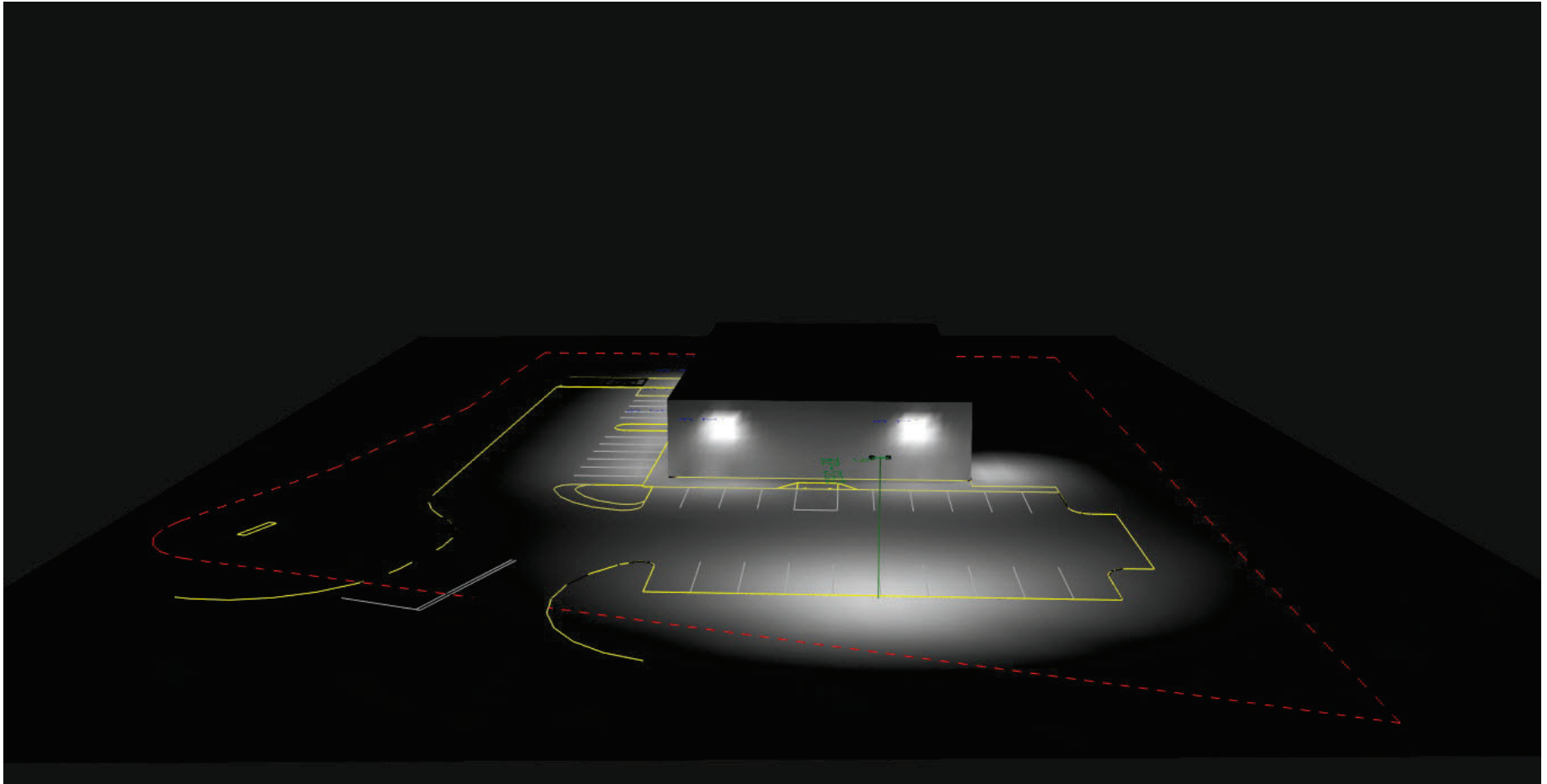
Luminaire Schedule								
Symbol	Qty	Label	Arrangement	Description	LLF	Luminaire Lumens	Luminaire Watts	Total Watts
	1	HP-SH2	Twin	NLES AL1212 Back Shield, 2-H	0.950	16181	147.489	294.978
	8	G	Single	NLES WP4054	0.950	5696	42.2406	337.925

Calculation Summary					
Label	CalcType	Units	Avg	Max	Min
Site	Illuminance	Fc	0.57	12.1	0.0
Parking Lot	Illuminance	Fc	1.87	10.2	0.1
				18.70	102.00

Project name: Dollar General
 Gastonia NC 31567 Lighting Layout
 Prepared for: Advanced Engineering
 Prepared by: Brent M. Finley, LC

NLES - INC.
 2586 W AMERICAN DRIVE, #1
 NEENAH, WI 54956
 PH 920-840-6054 / FAX 920-840-6424
www.nlesinc.com



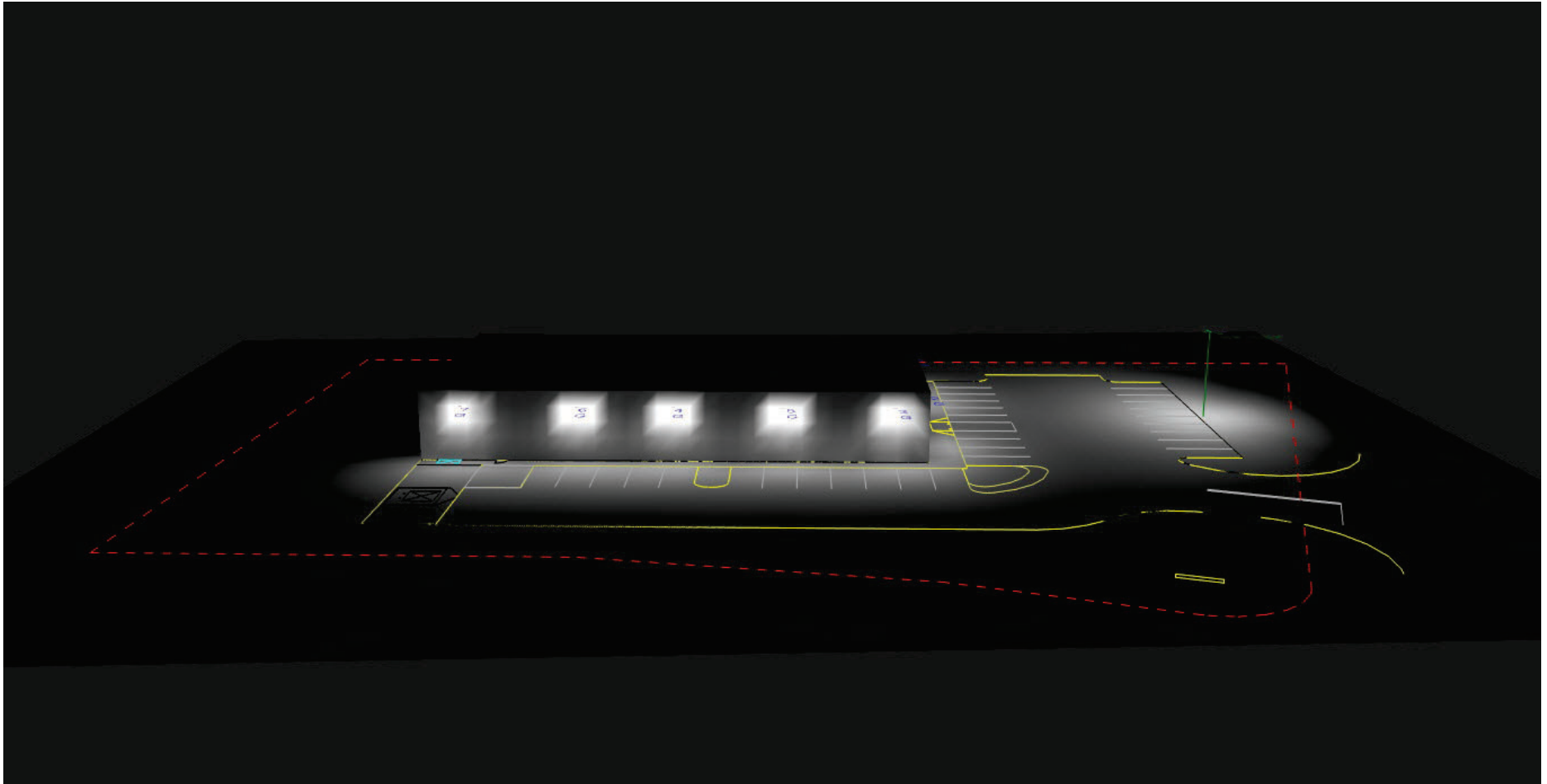


Project name: Dollar General
Gastonia NC 31567 Lighting Layout
Prepared for: Advanced Engineering
Prepared by: Brent M. Finley, LC

NLES - INC.

2586 W AMERICAN DRIVE, #1
NEENAH, WI 54956
PH 920-840-6054 / FAX 920-840-6424
www.nlesinc.com



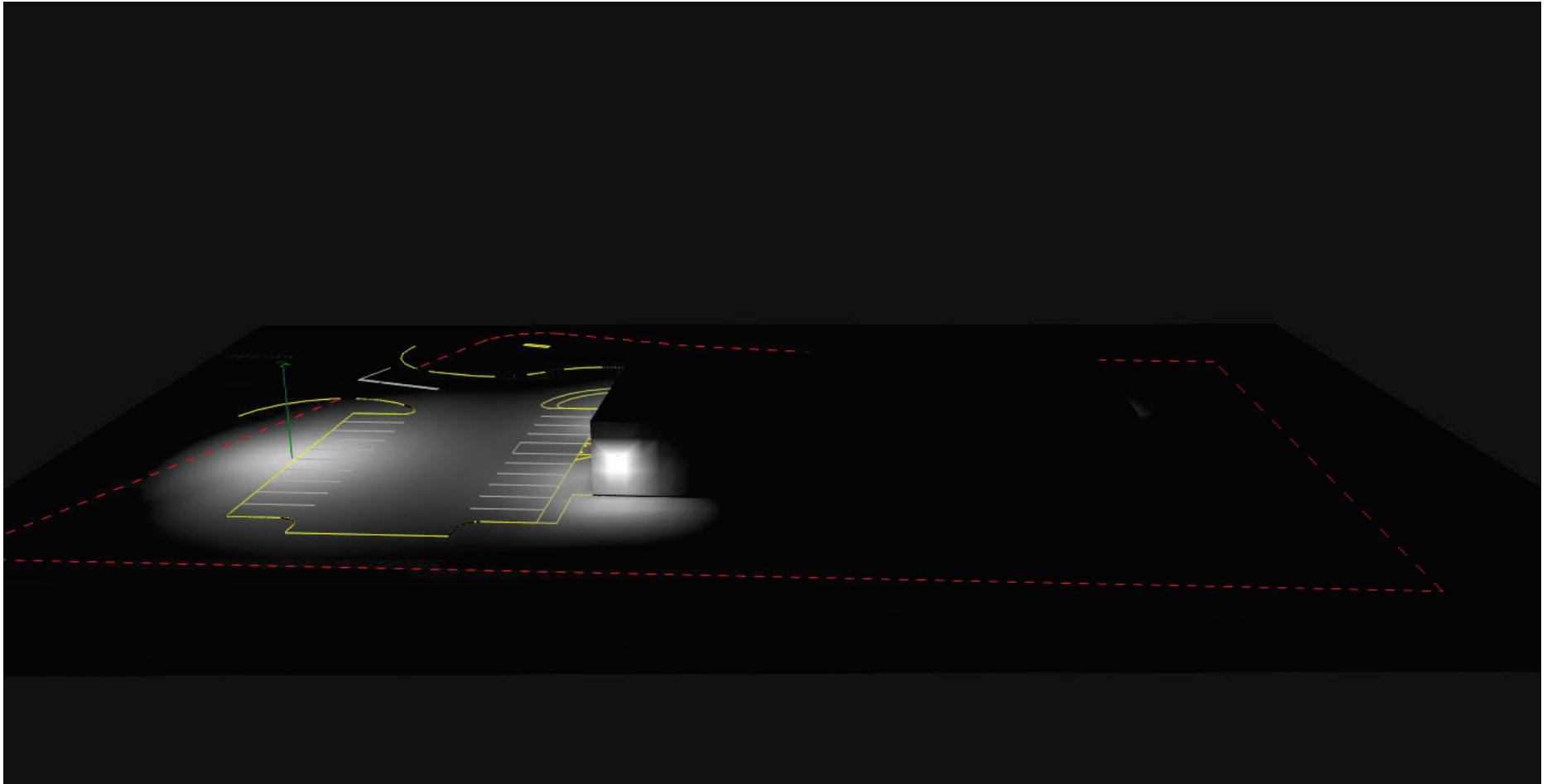


Project name: Dollar General
Gastonia NC 31567 Lighting Layout
Prepared for: Advanced Engineering
Prepared by: Brent M. Finley, LC

NLES - INC.

2586 W AMERICAN DRIVE, #1
NEENAH, WI 54956
PH 920-840-6054 / FAX 920-840-6424
www.nlesinc.com



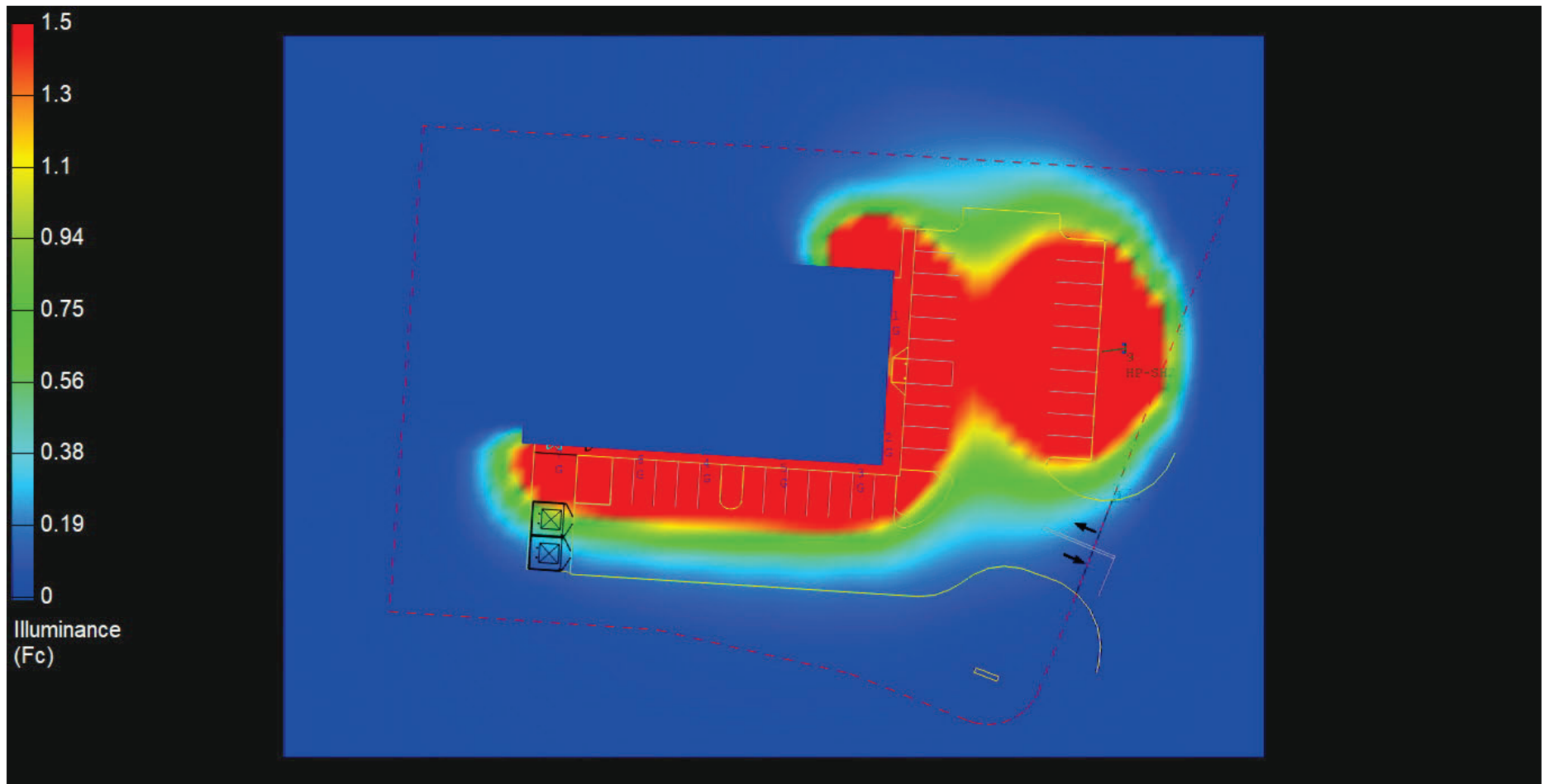


Project name: Dollar General
Gastonia NC 31567 Lighting Layout
Prepared for: Advanced Engineering
Prepared by: Brent M. Finley, LC

NLES - INC.

2586 W AMERICAN DRIVE, #1
NEENAH, WI 54956
PH 920-840-6054 / FAX 920-840-6424
www.nlesinc.com



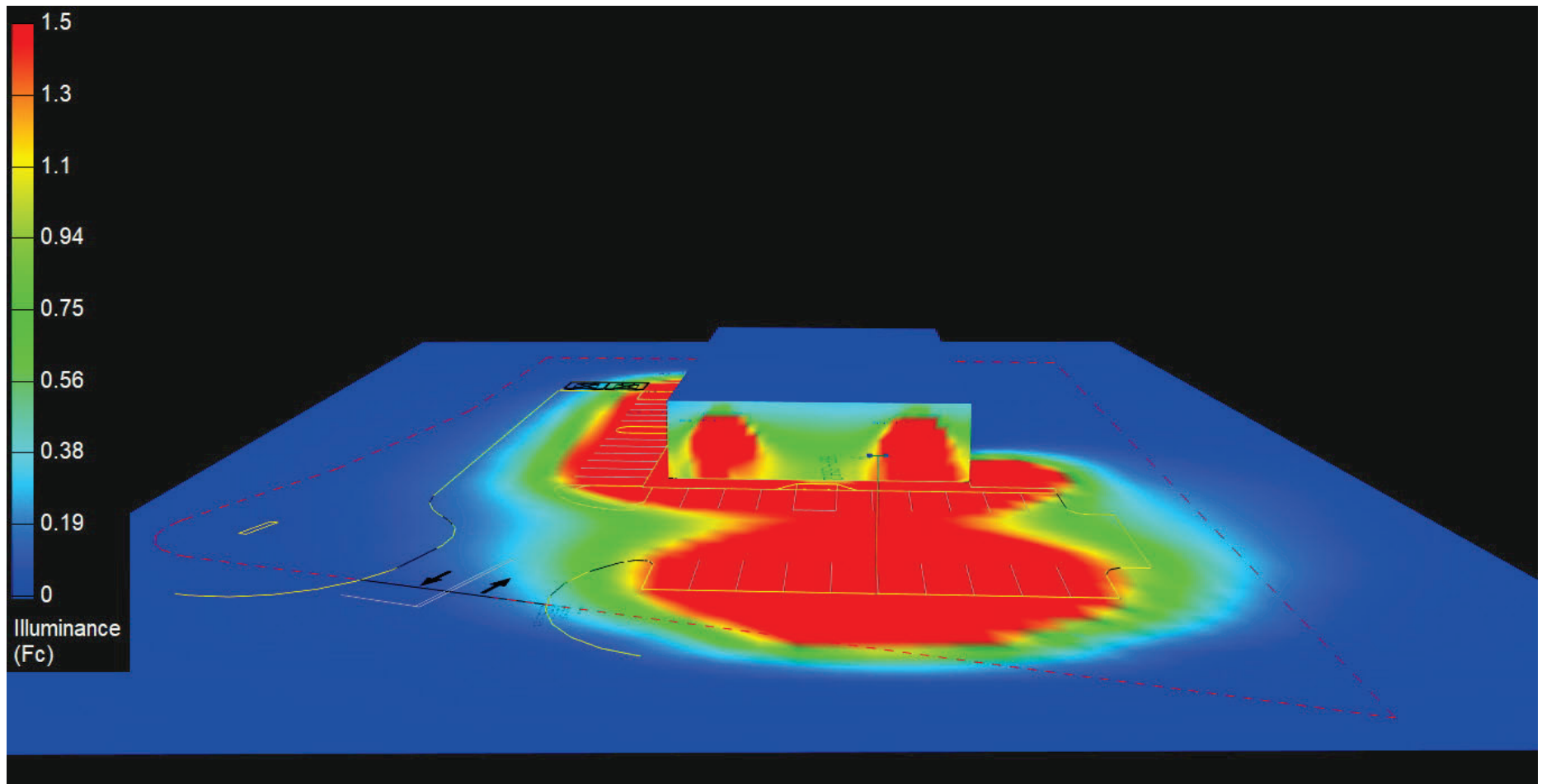


Project name: Dollar General
Gastonia NC 31567 Lighting Layout
Prepared for: Advanced Engineering
Prepared by: Brent M. Finley, LC

NLES - INC.

2586 W AMERICAN DRIVE, #1
NEENAH, WI 54956
PH 920-840-6054 / FAX 920-840-6424
www.nlesinc.com





Project name: Dollar General
Gastonia NC 31567 Lighting Layout
Prepared for: Advanced Engineering
Prepared by: Brent M. Finley, LC

NLES - INC.

2586 W AMERICAN DRIVE, #1
NEENAH, WI 54956
PH 920-840-6054 / FAX 920-840-6424
www.nlesinc.com

