

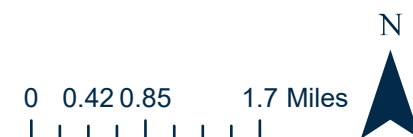
GASTON COUNTY
BUILDING AND DEVELOPMENT SERVICES

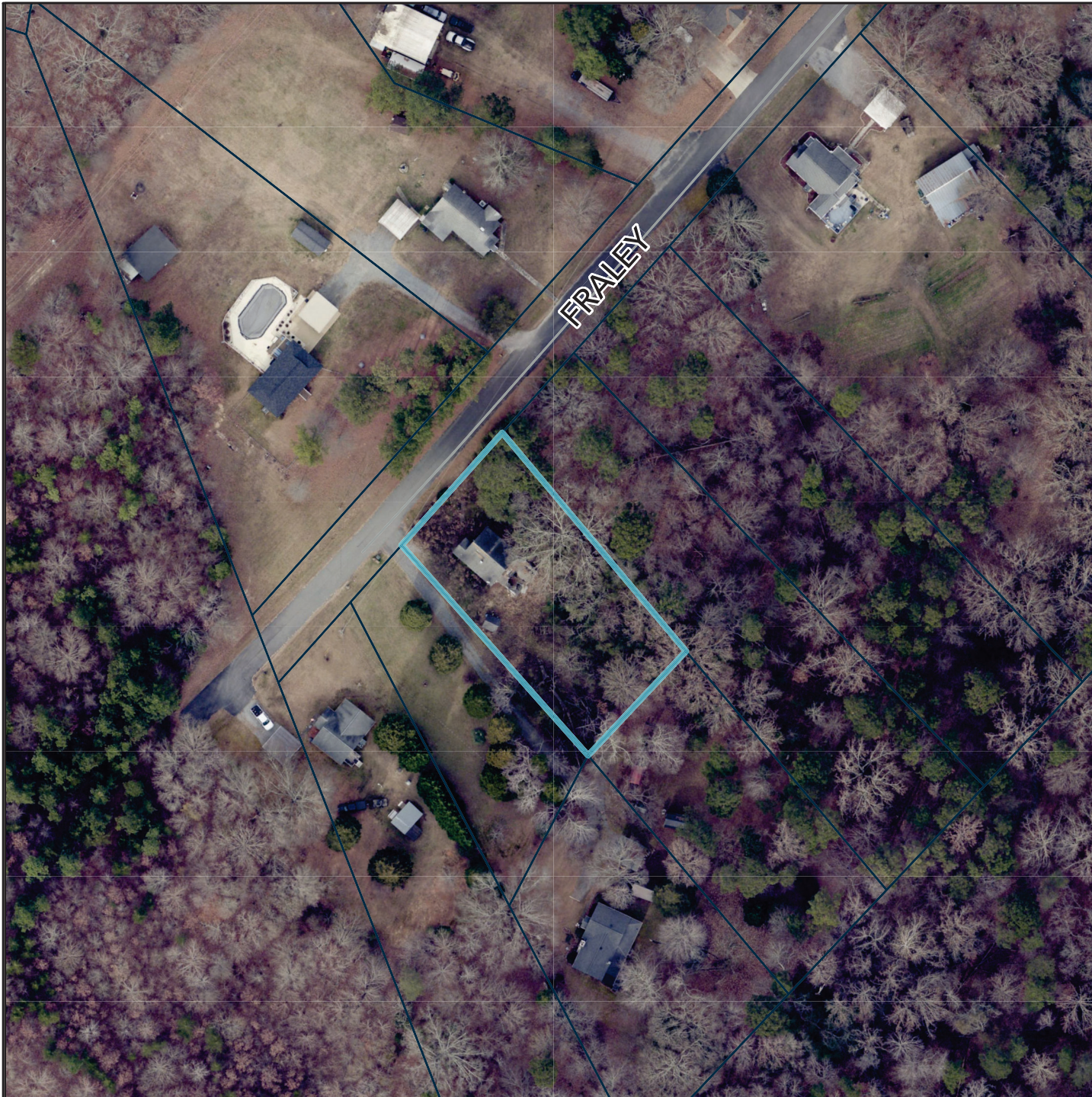
VICINITY MAP
REZ-24-04-18-00178

LEGEND

- Roads
- Municipalities
- Subject Parcel

The information provided on this map is not intended to be considered as a legal document or description. This map is believed to be accurate but Gaston County does not guarantee its accuracy. This map may not be resold or otherwise used for trade or commercial purposes without the expressed written consent of Gaston County, in accordance with NCGS 132-10.





GASTON COUNTY
BUILDING AND DEVELOPMENT SERVICES

ORTHOPHOTO MAP
REZ-24-04-18-00178

LEGEND

— Roads

□ Parcels

□ Subject Parcel

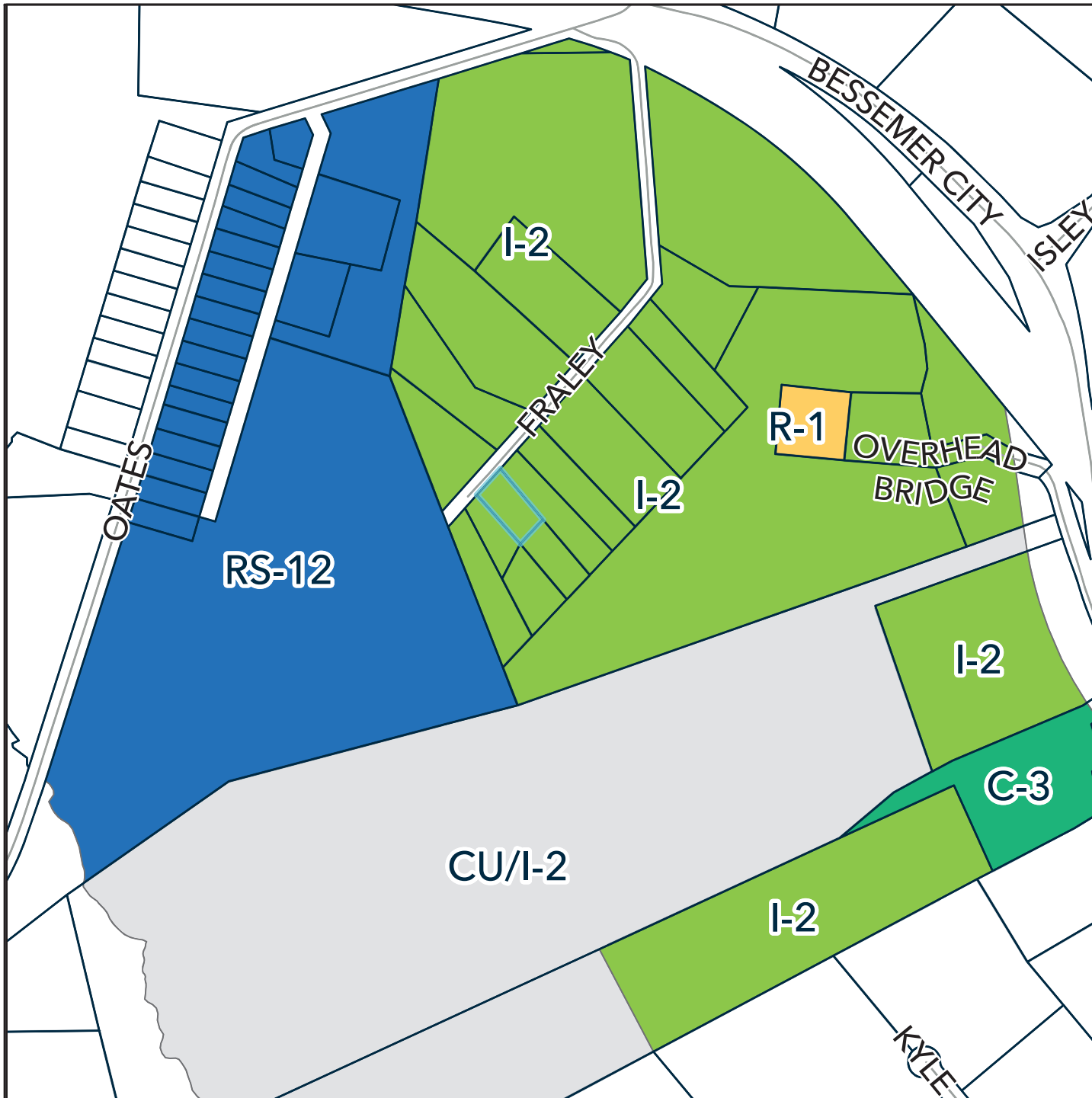
The information provided on this map is not intended to be considered as a legal document or description. This map is believed to be accurate but Gaston County does not guarantee its accuracy. This map may not be resold or otherwise used for trade or commercial purposes without the expressed written consent of Gaston County, in accordance with NCGS 132-10.

0 0.001 0.01 0.02 Miles



N





ZONING MAP REZ-24-04-18-00178

LEGEND

— Roads CU/I-2

□ Parcels I-2

ZONE TYPE R-1

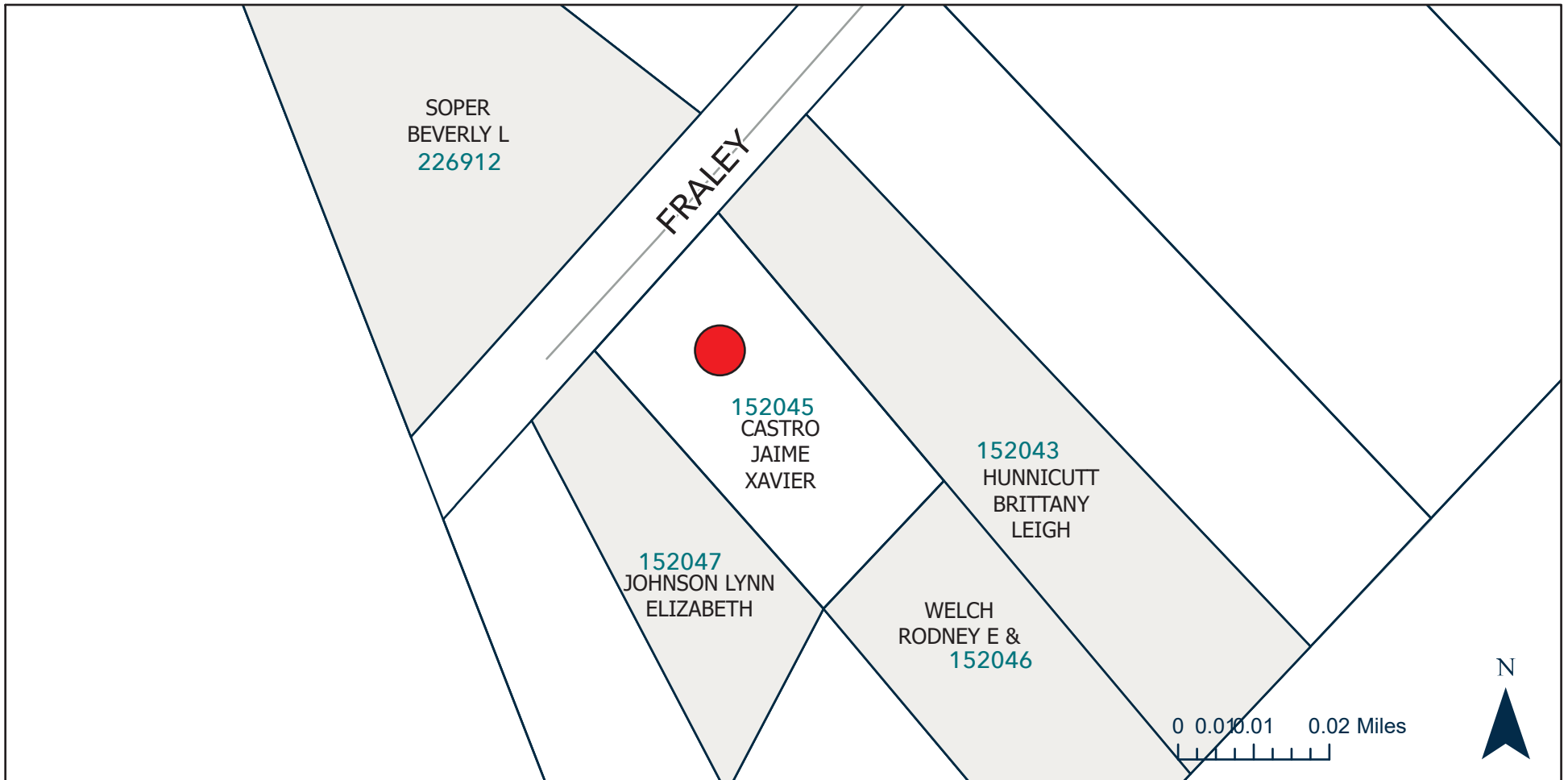
C-3 RS-12

□ Subject Parcel(s)

The information provided on this map is not intended to be considered as a legal document or description. This map is believed to be accurate but Gaston County does not guarantee its accuracy. This map may not be resold or otherwise used for trade or commercial purposes without the expressed written consent of Gaston County, in accordance with NCGS 132-10.

0 0.030.06 0.11 Miles





SUBJECT & ADJACENT PROPERTIES MAP | REZ-24-04-18-00178

LEGEND

 Subject Parcel

The information provided on this map is not intended to be considered as a legal document or description. This map is believed to be accurate but Gaston County does not guarantee its accuracy. This map may not be resold or otherwise used for trade or commercial purposes without the expressed written consent of Gaston County, in accordance with NCGS 132-10.