



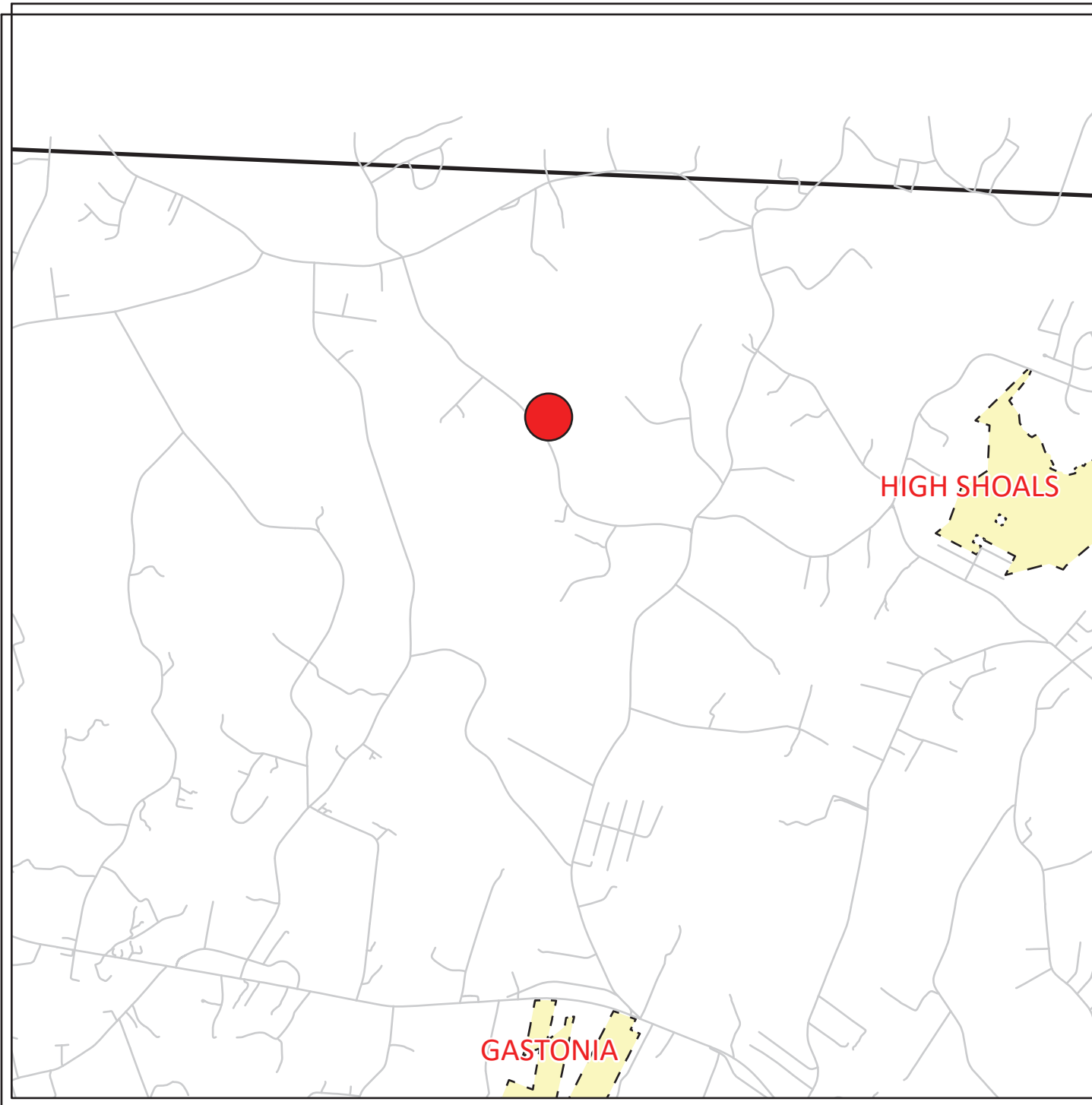
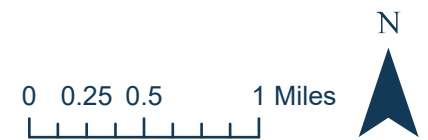
GASTON COUNTY
BUILDING AND DEVELOPMENT SERVICES

VICINITY MAP
REZ-25-03-14-00219

LEGEND

- Roads
- ▭ Municipalities
- Subject Parcel(s)

The information provided on this map is not intended to be considered as a legal document or description. The GIS data provided by Gaston County is made without warranty. Primary sources from which this data was compiled must be consulted for verification of the information contained within. This map may not be resold or otherwise used for trade or commercial purposes without the expressed written consent of Gaston County, in accordance with NCGS








GASTON COUNTY
BUILDING AND DEVELOPMENT SERVICES

ORTHOPHOTO MAP
REZ-25-03-14-00219

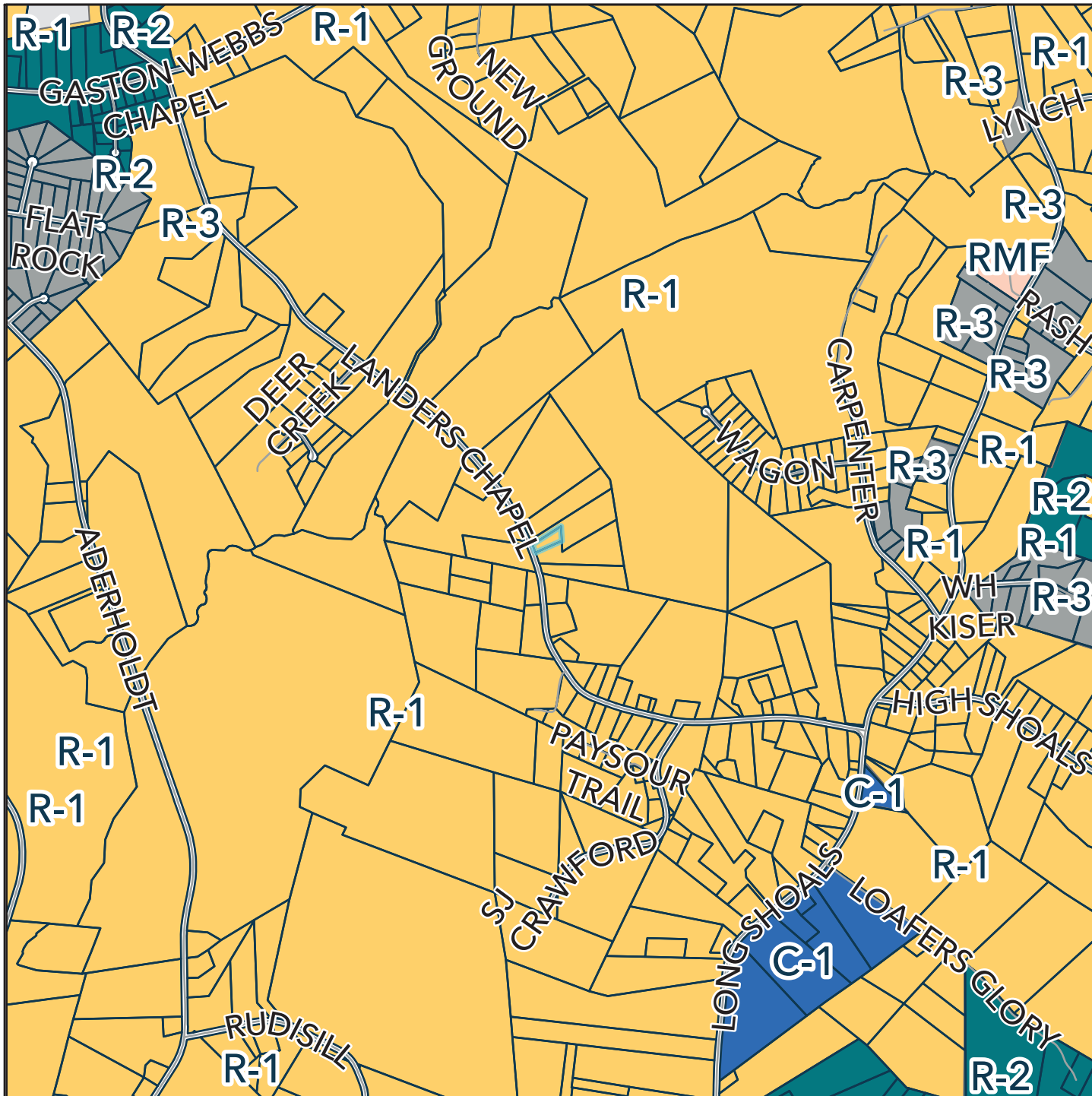
LEGEND

-  Parcels
-  Roads
-  Subject Property

The information provided on this map is not intended to be considered as a legal document or description. The GIS data provided by Gaston County is made without warranty. Primary sources from which this data was compiled must be consulted for verification of the information contained within. This map may not be resold or otherwise used for trade or commercial purposes without the expressed written consent of Gaston County, in accordance with NCGS

0 0.001 0.02 Miles



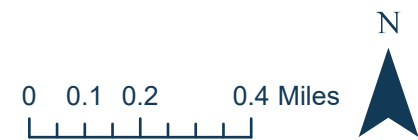


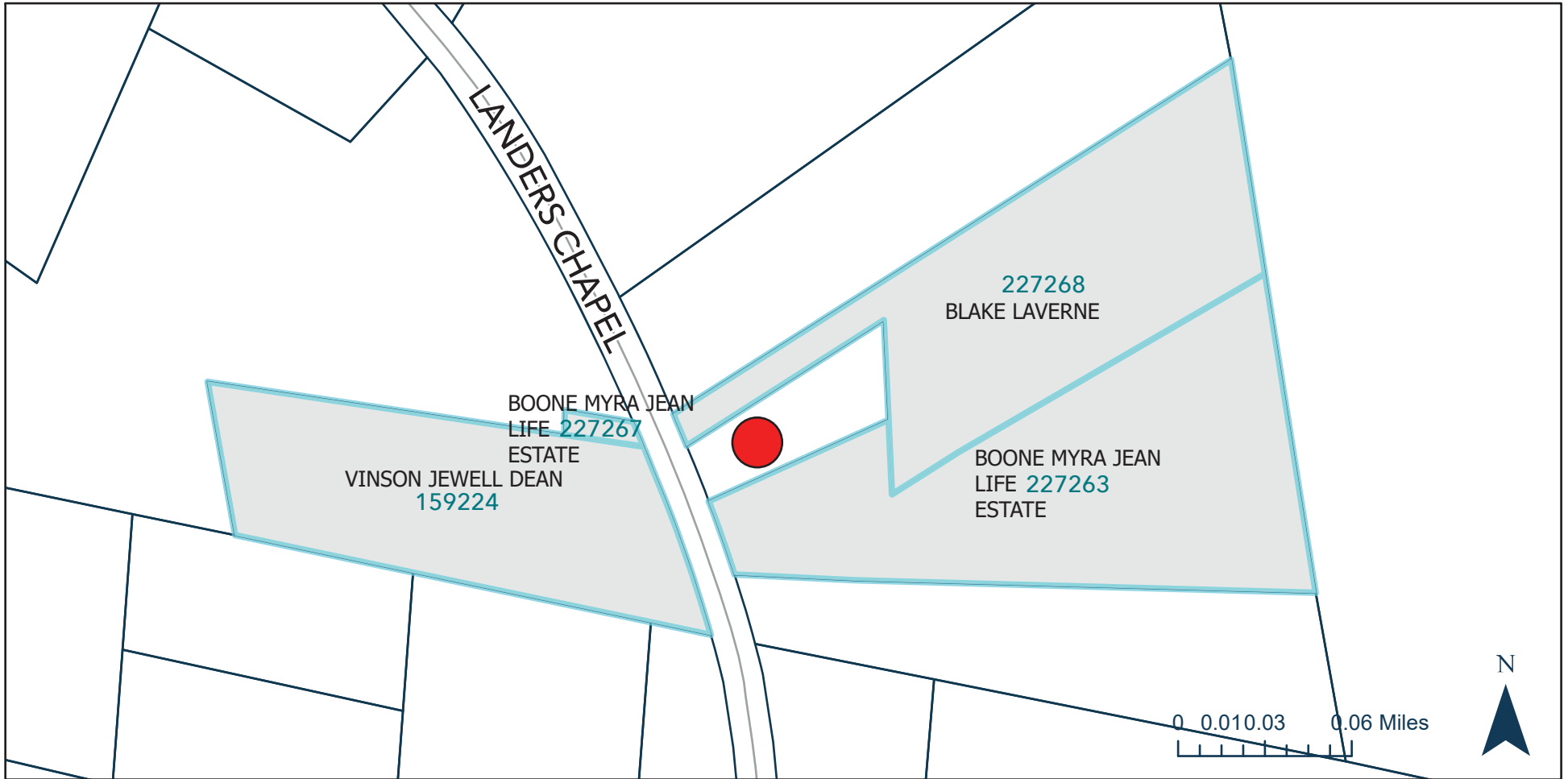
TOPOGRAPHY MAP
REZ-25-03-14-00219

LEGEND

ZONE TYPE	R-3
C-1	RMF
CD/R-3	Parcels
R-1	Roads
R-2	

The information provided on this map is not intended to be considered as a legal document or description. The GIS data provided by Gaston County is made without warranty. Primary sources from which this data was compiled must be consulted for verification of the information contained within. This map may not be resold or otherwise used for trade or commercial purposes without the expressed written consent of Gaston County, in accordance with NCGS





SUBJECT & ADJACENT PROPERTIES MAP | REZ-25-03-14-00219

LEGEND

 Subject Parcel

The information provided on this map is not intended to be considered as a legal document or description. The GIS data provided by Gaston County is made without warranty. Primary sources from which this data was compiled must be consulted for verification of the information contained within. This map may not be resold or otherwise used for trade or commercial purposes without the expressed written consent of Gaston County, in accordance with NCGS 132-10.