

# George Poston Park Pumptrack

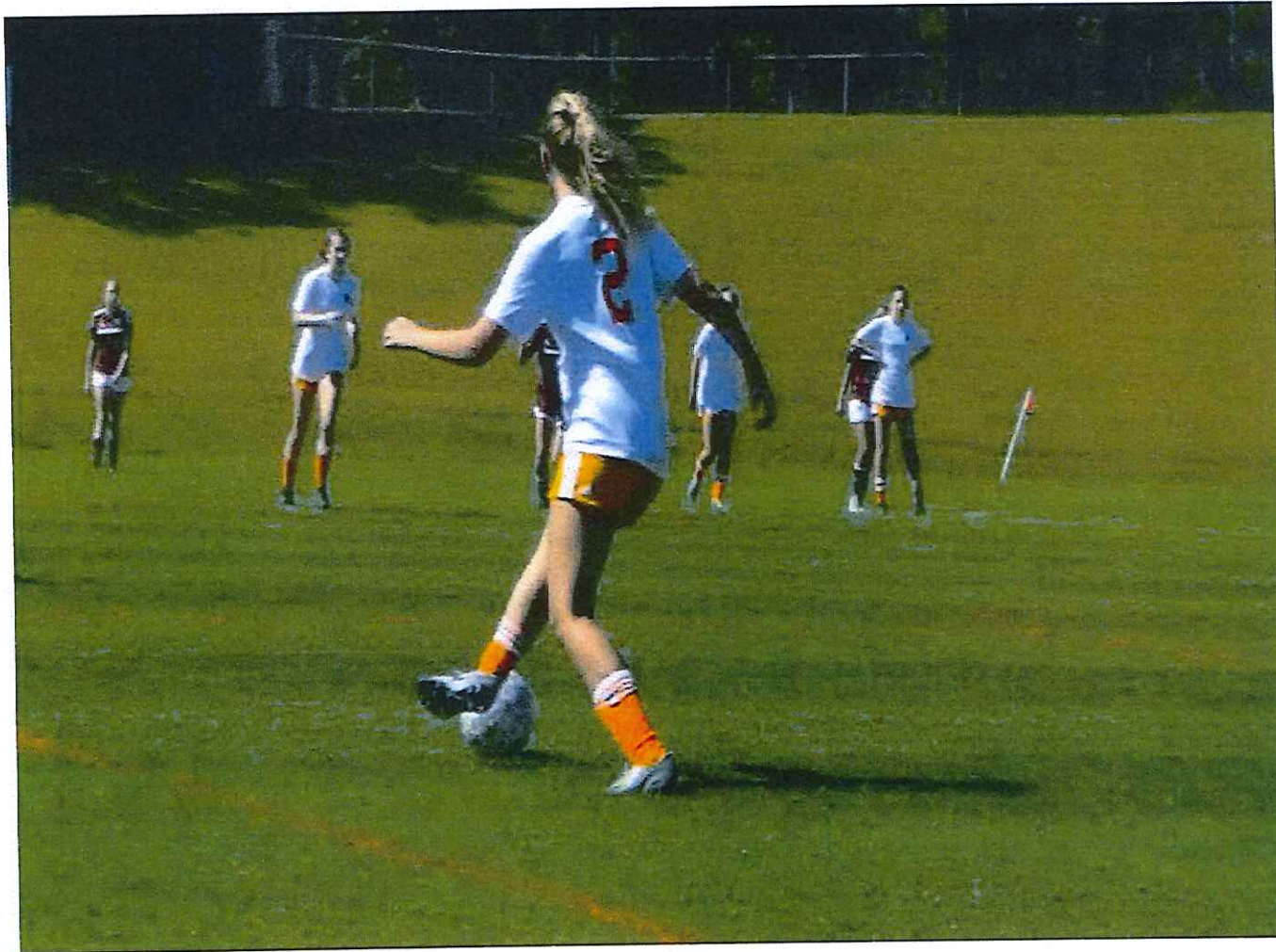


# George Poston Park History

- 1987 - Edith Poston donates 328 acres for the park
- 2001- Phase 1 opens - 8 athletic fields, horseshoe pits, restrooms, playground and parking
- 2007 - First 3 miles of the mountain bike trails opens
- 2009 – Dog park opens
- 2012 - 11-acre lake, pier, and picnic shelters opens
- 2015 - Poston trails receive National Recreational Trail designation
- 2017 - Paved trails on the South Fork River opens









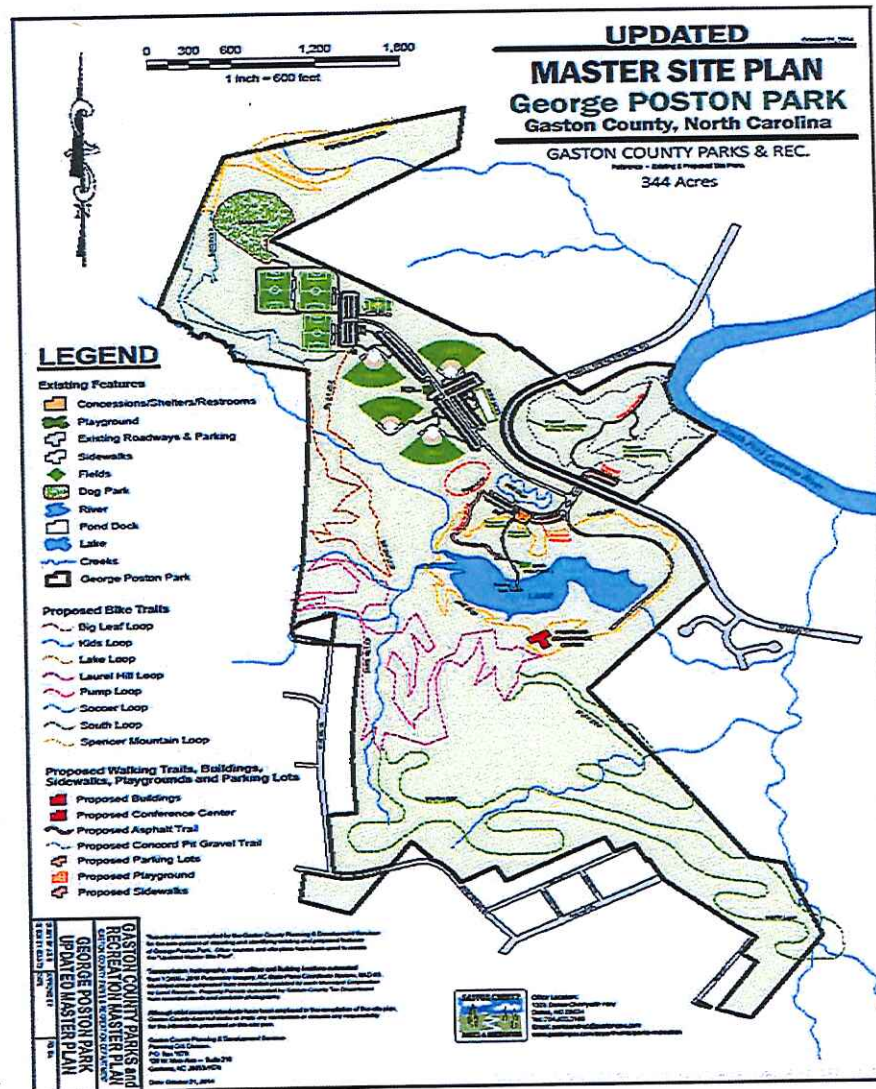














# George Poston Park Pumptrack

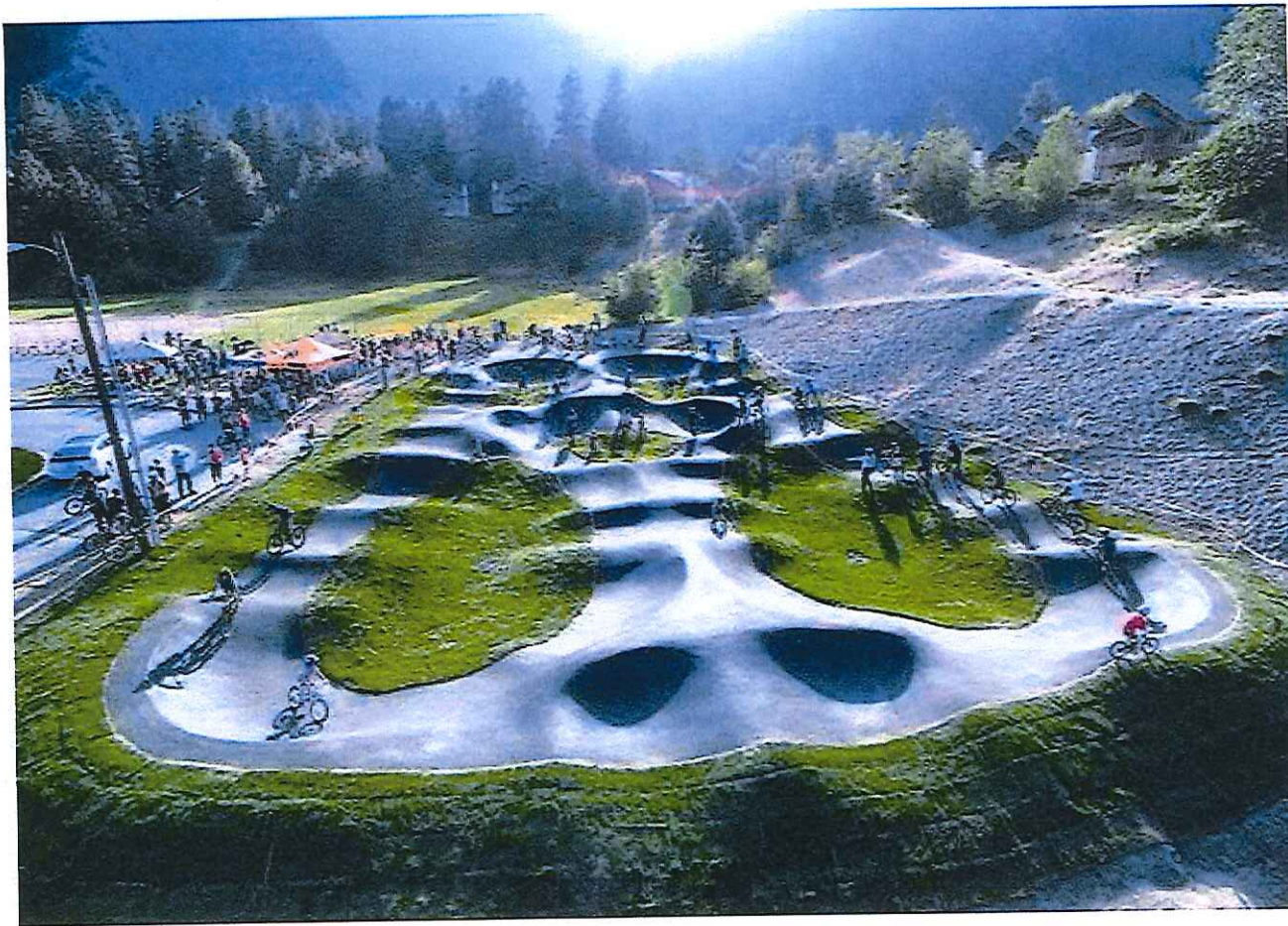
- Parks and Recreation Advisory Board approved the addition of a pumptrack to Poston Park several years ago
- Pumptrack will compliment the 10 miles of bike trail
- Velosolutions offers asphalt pumptracks which provide a multi-use, multi-generational facility
- Alternative sports such as skateboarding, longboarding, roller blading, bmx biking, can use the pumptrack
- Asphalt pumptrack requires very little maintenance
- Unlike dirt tracks or traditional skate parks, anything with wheels can be enjoyed on this “rideable playground”

# George Poston Park Pumptrack

- Currently there are only 6 asphalt pumptracks in the US
- Locations include New York, Utah, Washington, California, and Missouri
- Five more pumptracks are in the design phase now – locations include Miami, Colorado, and Oregon
- The unique experience would attract new park users
- The pumptrack would be a new amenity for Travel and Tourism to market and is a natural fit with the Gaston Outside campaign
- The facility could be used to bring in new events and could enhance the annual Cyclofest at the Whitewater Center as well as events at the Rock Hill Velodrome



# Leavenworth, Washington



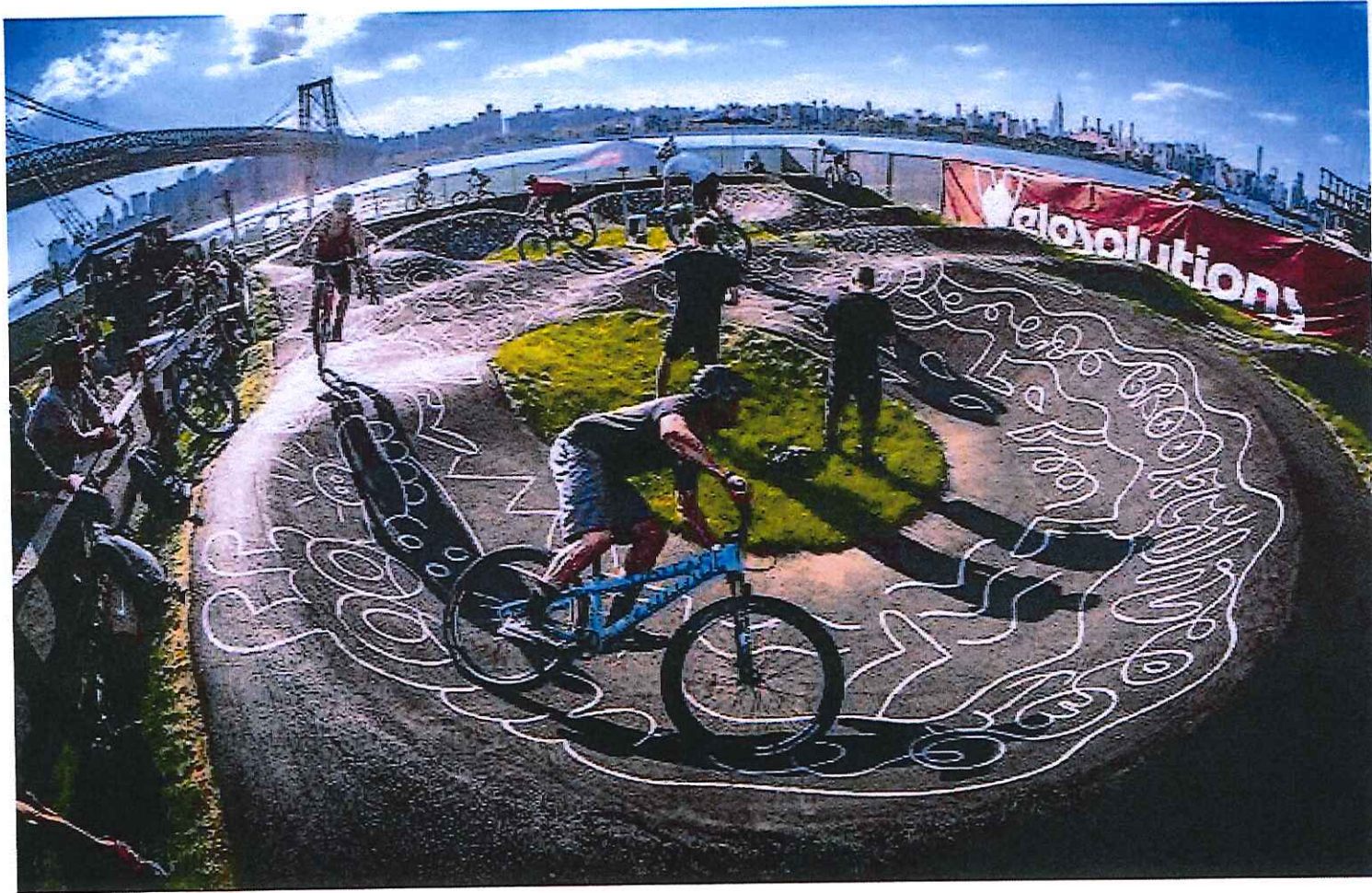


# Oklahoma City





# New York City



# New York City Pumptrack



Velosolutions Pump Track New York City Grand Opening.mp4



# George Poston Park Pumptrack

- Projected budget is \$25 per square foot or \$250,000 for a 10,000 square foot pumptrack
- A 10,000 square foot pumptrack could accommodate 20-30 users at one time
- Parks and Recreation has \$100,000 for the project
- Additional investments would be needed to complete the pumptrack
- Project would begin with design process
- Actual build time is approximately 2 weeks

# George Poston Park Pumptrack

## Questions?

