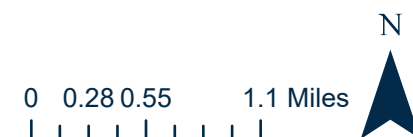


**VICINITY MAP**  
**REZ-23-11-22-00165**

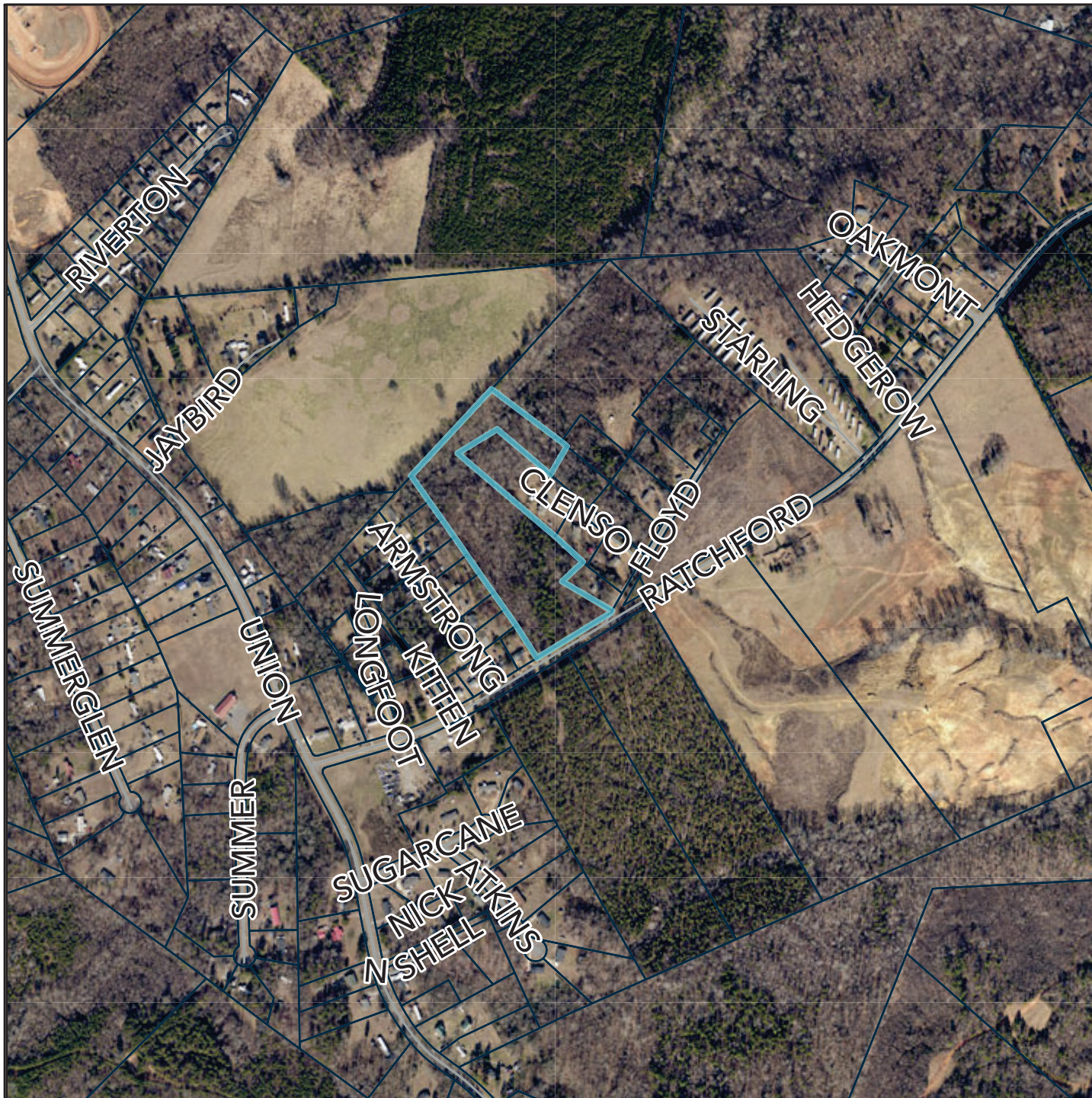
**LEGEND**

- Roads
- ▭ Municipalities
- Subject Parcel

The information provided on this map is not intended to be considered as a legal document or description. This map is believed to be accurate but Gaston County does not guarantee its accuracy. This map may not be resold or otherwise used for trade or commercial purposes without the expressed written consent of Gaston County, in accordance with NCGS 132-10.





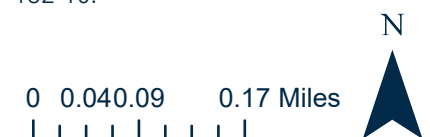


## ORTHOPHOTO MAP REZ-23-11-22-00165

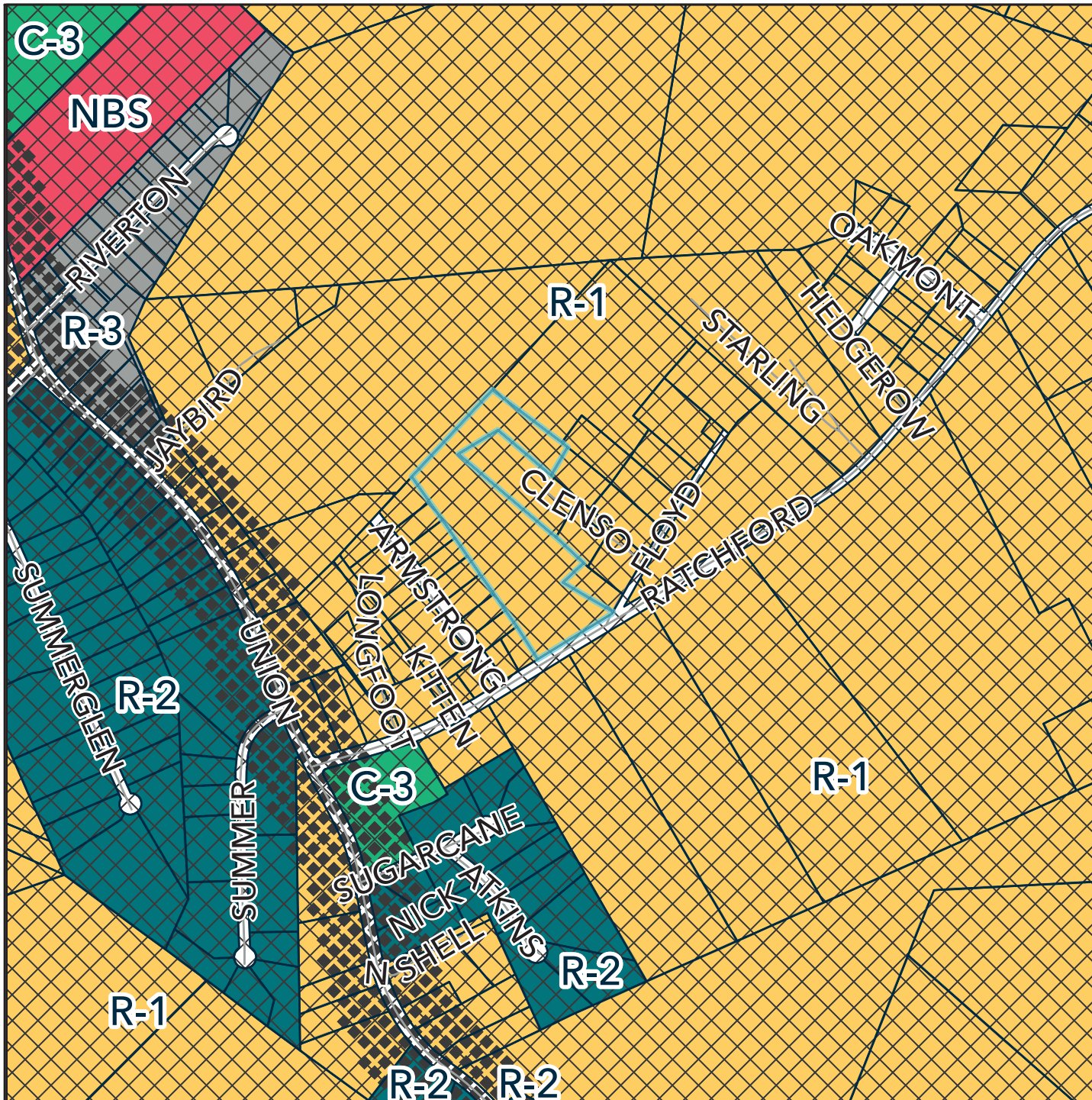
### LEGEND

- Roads
- Parcels
- Subject Parcel

The information provided on this map is not intended to be considered as a legal document or description. This map is believed to be accurate but Gaston County does not guarantee its accuracy. This map may not be resold or otherwise used for trade or commercial purposes without the expressed written consent of Gaston County, in accordance with NCGS 132-10.







## ZONING MAP REZ-23-11-22-00165

### LEGEND

— Roads

□ Parcels

ZONE TYPE

■ C-3

■ NBS

■ R-1

■ R-2

■ R-3

TYPE

◆ CH OVERLAY

∨ US OVERLAY

□ Subject Parcel

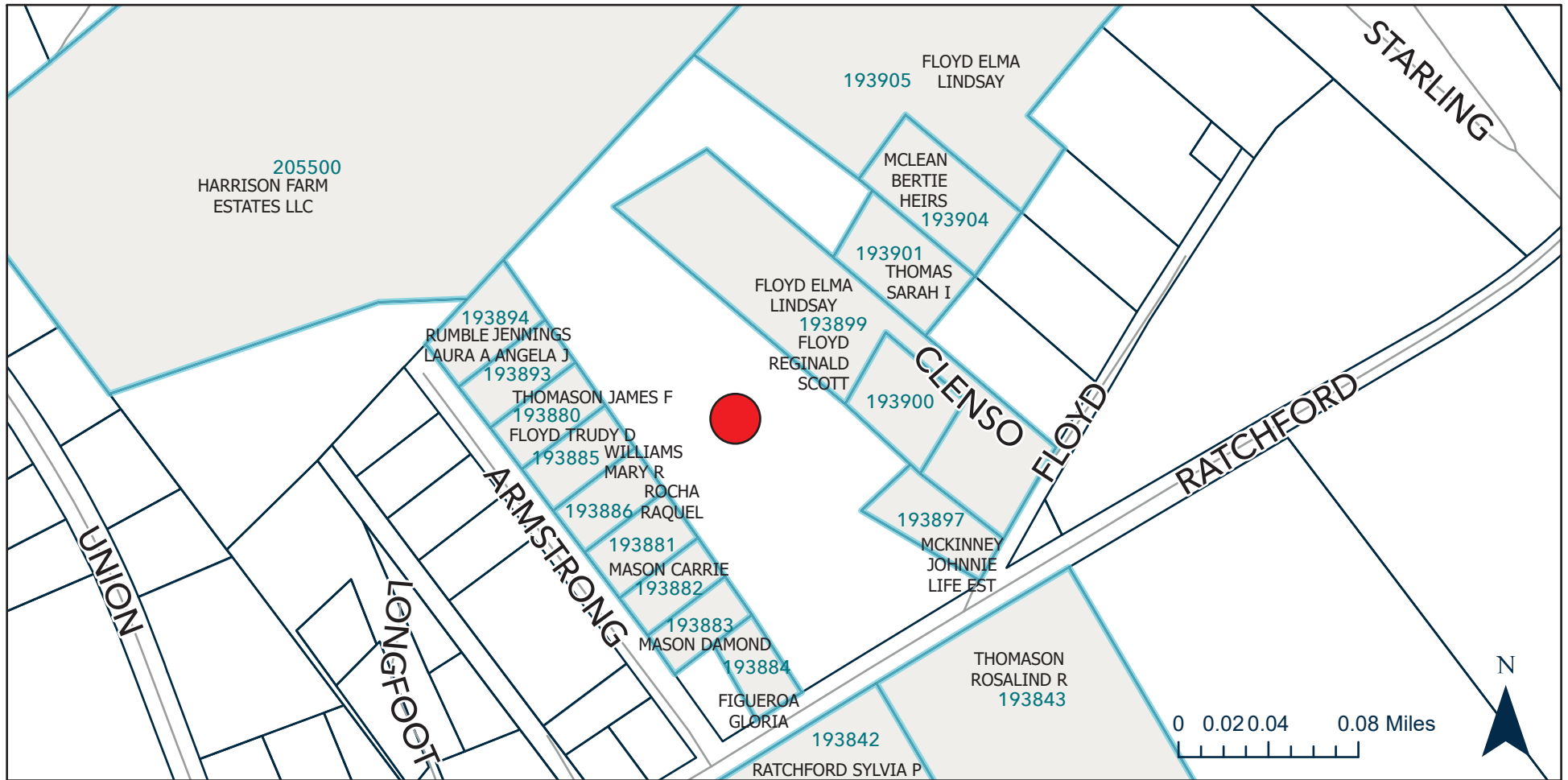
The information provided on this map is not intended to be considered as a legal document or description. This map is believed to be accurate but Gaston County does not guarantee its accuracy. This map may not be resold or otherwise used for trade or commercial purposes without the expressed written consent of Gaston County, in accordance with NCGS 132-10.

0 0.040.09 0.17 Miles



N





## SUBJECT & ADJACENT PROPERTIES MAP | REZ-23-11-22-00165

### LEGEND

 Subject Parcel

The information provided on this map is not intended to be considered as a legal document or description. This map is believed to be accurate but Gaston County does not guarantee its accuracy. This map may not be resold or otherwise used for trade or commercial purposes without the expressed written consent of Gaston County, in accordance with NCGS 132-10.