



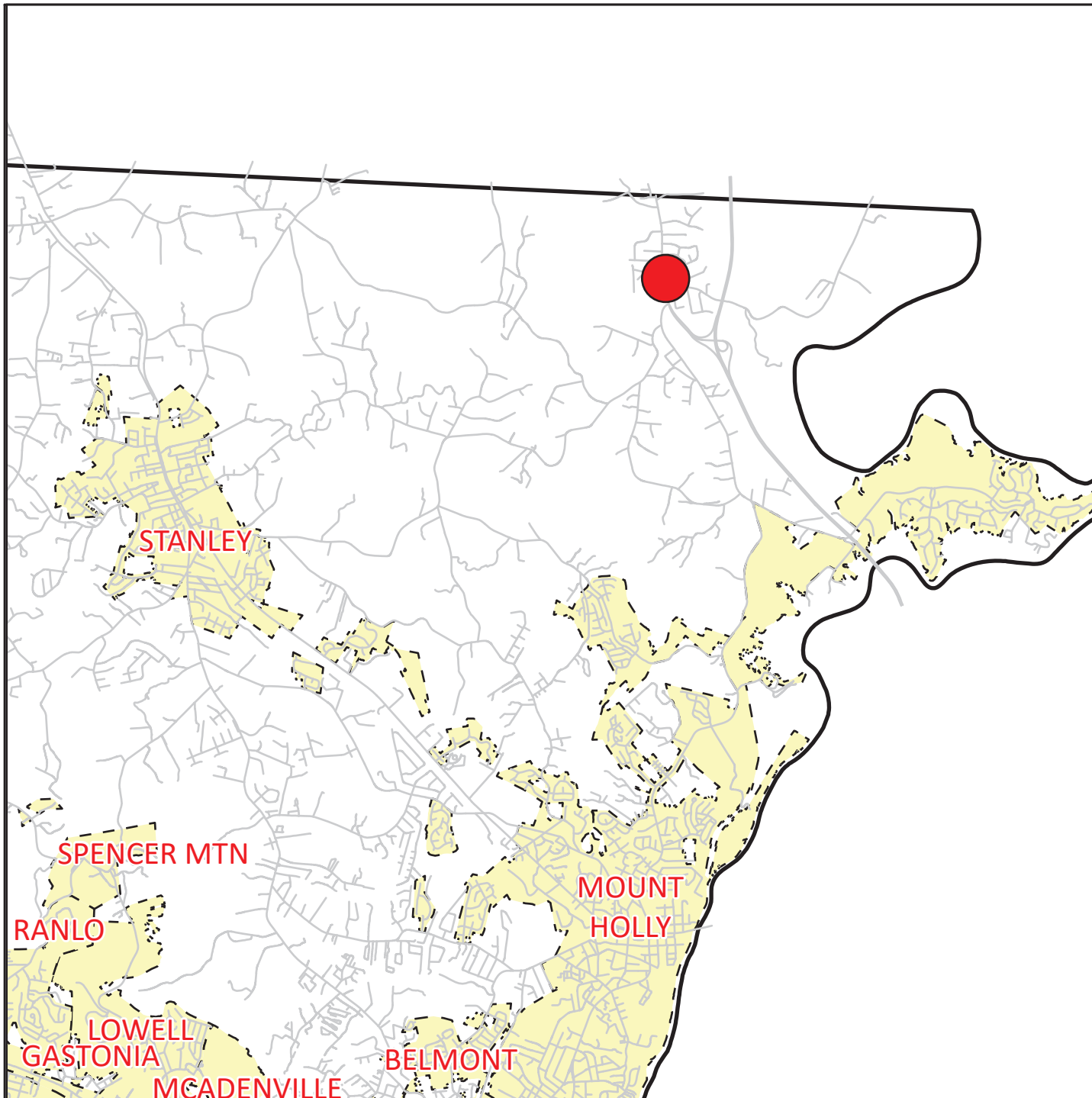
GASTON COUNTY
BUILDING AND DEVELOPMENT SERVICES

VICINITY MAP
REZ-25-03-04-00216

LEGEND

- Roads
- ▨ Municipalities
- Subject Parcel

The information provided on this map is not intended to be considered as a legal document or description. The GIS data provided by Gaston County is made without warranty. Primary sources from which this data was compiled must be consulted for verification of the information contained within. This map may not be resold or otherwise used for trade or commercial purposes without the expressed written consent of Gaston County, in accordance with NCGS





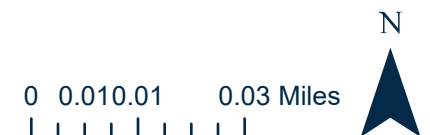
GASTON COUNTY
BUILDING AND DEVELOPMENT SERVICES

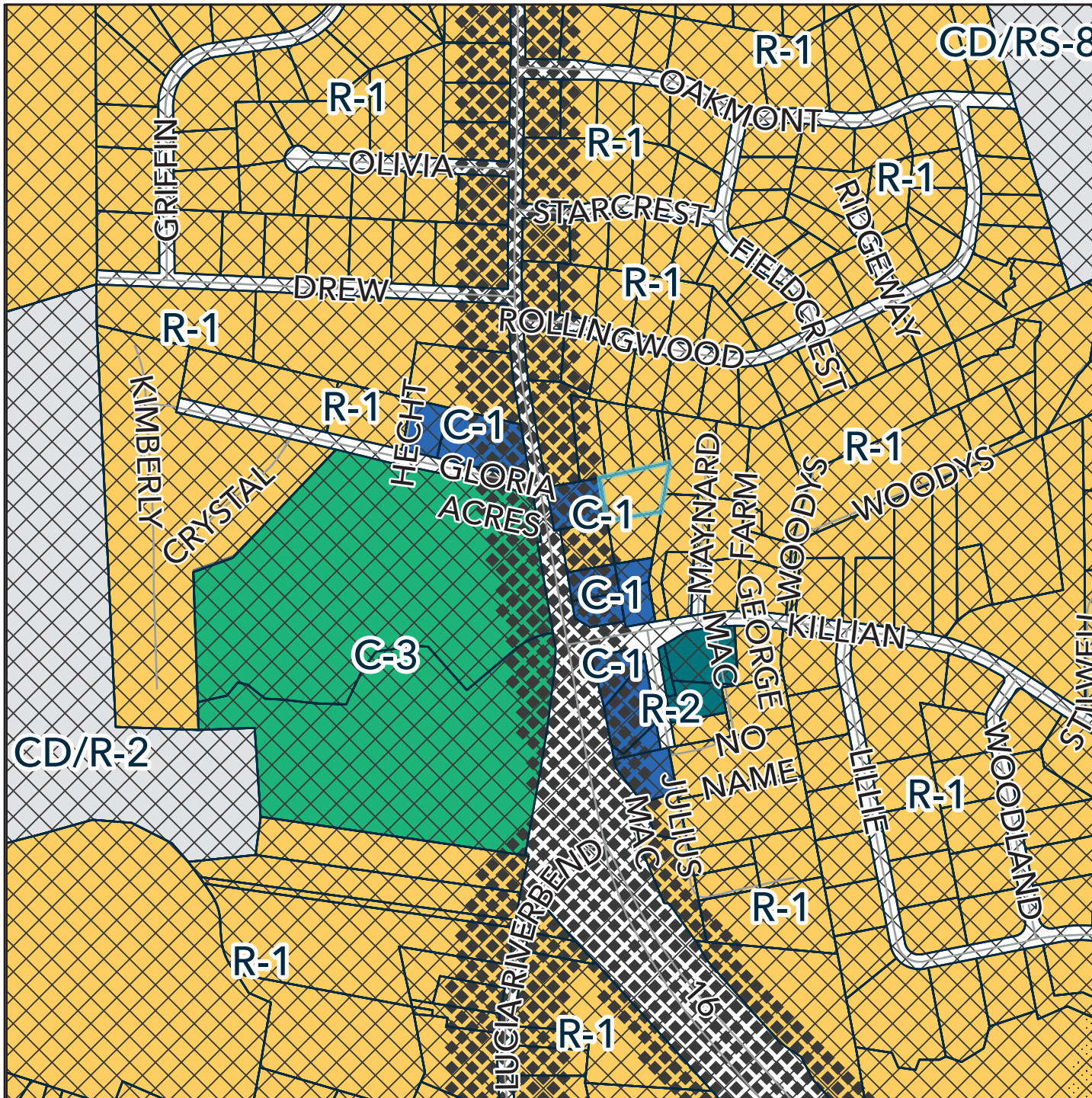
ORTHOPHOTO MAP
REZ-25-03-04-00216

LEGEND

- Roads
- Parcels
- Subject Property

The information provided on this map is not intended to be considered as a legal document or description. The GIS data provided by Gaston County is made without warranty. Primary sources from which this data was compiled must be consulted for verification of the information contained within. This map may not be resold or otherwise used for trade or commercial purposes without the expressed written consent of Gaston County, in accordance with NCGS





ZONING MAP REZ-25-03-04-00216

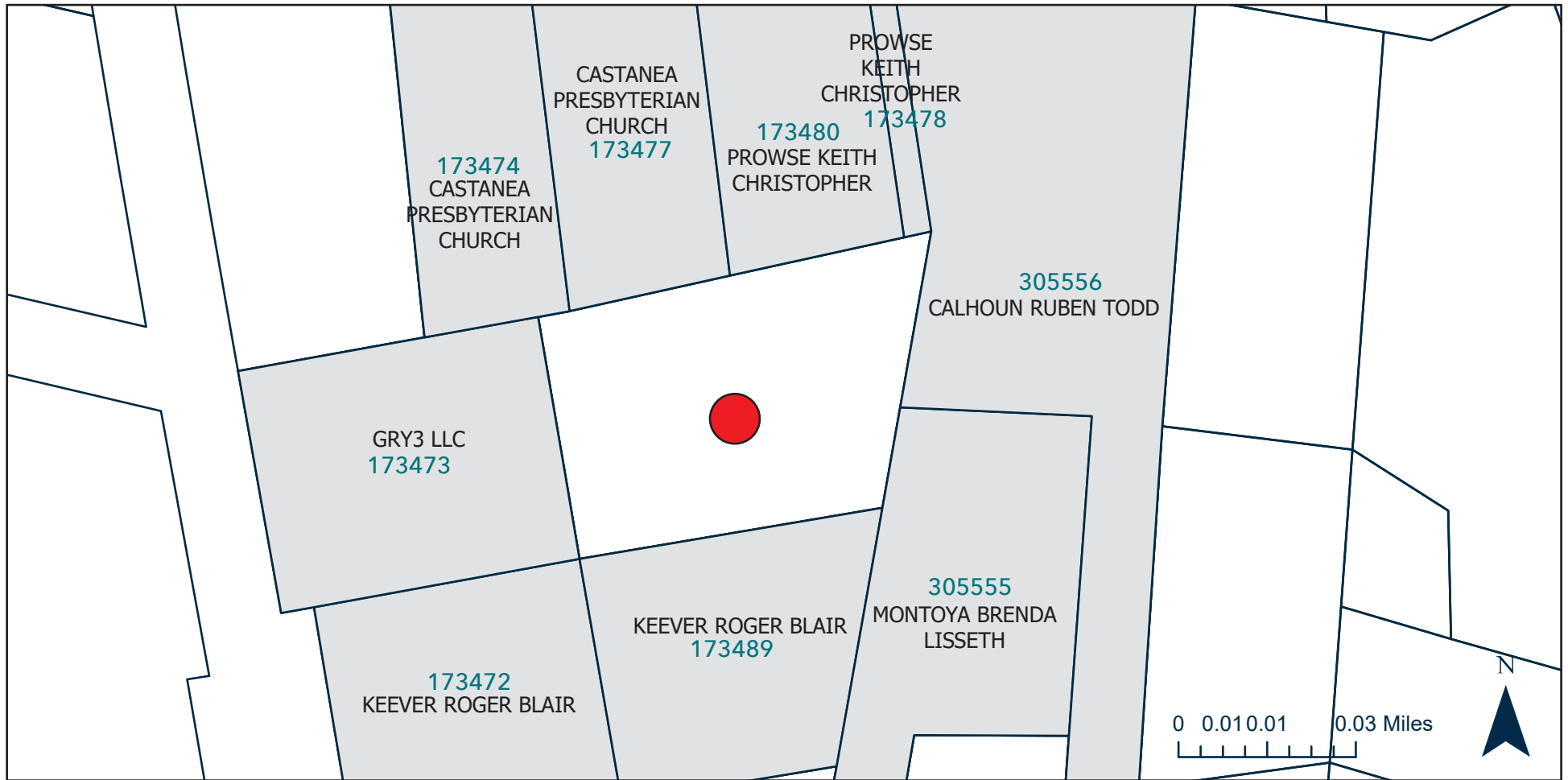
LEGEND

| | |
|------------------|--------------|
| — Roads | R-1 |
| □ Parcels | R-2 |
| ZONE TYPE | TYPE |
| ■ C-1 | ◆ CH OVERLAY |
| ■ C-3 | ◆ SH OVERLAY |
| ■ CD/R-2 | ◆ US OVERLAY |
| ■ CD/RS-8 | |
| □ Subject Parcel | |

The information provided on this map is not intended to be considered as a legal document or description. The GIS data provided by Gaston County is made without warranty. Primary sources from which this data was compiled must be consulted for verification of the information contained within. This map may not be resold or otherwise used for trade or commercial purposes without the expressed written consent of Gaston County, in accordance with NCGS 132-10.

0 0.04 0.08 0.16 Miles





SUBJECT & ADJACENT PROPERTIES MAP | REZ-25-03-04-00216

LEGEND

 Subject Parcel

The information provided on this map is not intended to be considered as a legal document or description. The GIS data provided by Gaston County is made without warranty. Primary sources from which this data was compiled must be consulted for verification of the information contained within. This map may not be resold or otherwise used for trade or commercial purposes without the expressed written consent of Gaston County, in accordance with NCGS 132-10.