

PIVOT **REMOTELY OPERATED** **VEHICLE [ROV]**

The perfect balance between size and power.
Providing enhanced stability, greater power,
speed and control in a portable package.



 **DEEP TREKKER™**

PORTABILITY MEETS POWER

The Deep Trekker PIVOT, portability meets unmatched power. Equipped with 6 strong thrusters powered by lithium batteries, the PIVOT provides users with stability, power, speed and control in a portable package.



305m (1000ft)
depth rating



Up to 3-hour
battery operation



HD rotating
camera head



Modular for 3rd
party add-ons



Rotating tool platform

Independently revolve 97-degrees for manipulator, sonar and more.



Field swap batteries

Quick-change batteries in the field for extended missions.



Autonomous capabilities

Seamlessly fusing all sensor data for autonomous control.

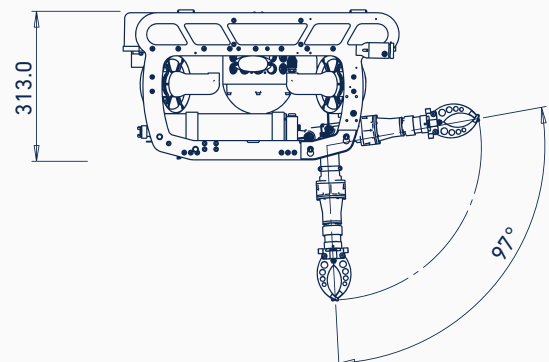
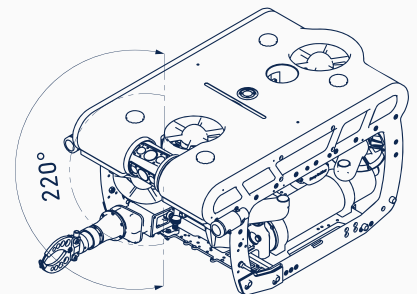
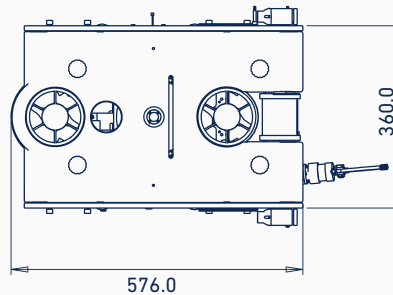
GENERAL SPECIFICATIONS

ROV General Specs

| | |
|-------------------|---|
| Width : | 360 MM (14.2") |
| Height : | 310 MM (12.2") |
| Length : | 576 MM (22.7") |
| Weight (in air) : | 21.7 KG (48 LB) |
| Body Material : | Anodized Machined Aluminum, Carbon Fiber, & Stainless Steel Buoyancy Foam |
| Window Material : | Sapphire & Acrylic |
| Depth Rating : | 305 M (1000 FT) |
| Operating Temp : | -10°C to 50°C (14°F – 122°F) |
| Case: | Custom Pelican Air 1650 & 1560 Handle and Wheels |
| Drives/Thruster: | Magnetically Coupled/Sealed |
| Warranty : | 1 Year – Parts and Labor (optional 2-3 yrs) |

ROV Electrical System

| | |
|--------------------|--|
| System Voltage : | 19.6 VDC |
| Battery Run Time : | Up to 3 Hours (30-sec Battery Change) |
| Battery Recharge : | 1.5 Hours |
| Thruster Control : | 6x Independent Control Infinitely Variable 100% Reversible |



COMBINING FLEXIBILITY, STABILITY AND INTELLIGENT FEATURES FOR UNMATCHED FREEDOM

97-degree rotating tool positioning provides pilots with flexible imaging options and convenient tool manipulation from a stable platform - allowing for jobs to be completed quickly and conveniently. The 220-degree range of motion on the HD camera allows users to complete inspections in a timely, straightforward manner.

- The expandable tool platform allows for numerous modular options for adaptability and customization.
- In addition to being flexible and adaptable, the PIVOT is easy to use allowing operators to be trained quickly.
- The ideal combination of stability and flexibility lets users keep their platform in the most stable position for imaging options.

OUT-OF-BOX READY

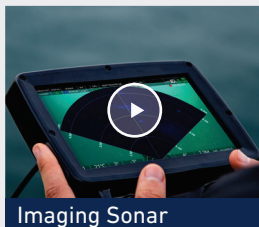
Fully assembled and tested, operators can depend on their PIVOT to work right out of the box no matter what the mission.

- Carbon fiber and aluminum durability make the PIVOT a tough and reliable vehicle. Providing years of service - saving time and money long term.
- Magnetically coupled thrusters, stainless steel components and sapphire lens cover paired with intelligent design ensures that operators can trust their vehicle to get the job done.
- With the support of the Deep Trekker team behind every vehicle, users can expect exceptional customer service.

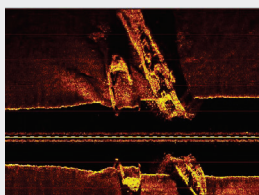
VEHICLE COMPONENTS & OPTIONAL ADD-ONS



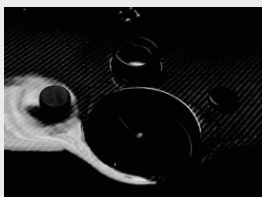
Independent Pivoting Tool Skid



Imaging Sonar



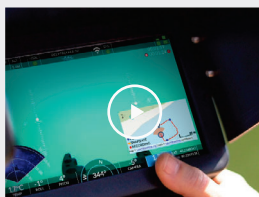
Side Scan Sonar



6-Thruster Stability



Future Autonomy



USBL Positioning

POWERED BY BRIDGE TECHNOLOGY

An intelligent, technology platform from Deep Trekker. An operating system designed with custom hardware and software; for control, integration, communication and enhanced operation.

Enable the ability to fuse all sensor data into one handheld, weatherproof controller. See positional data, direct imaging sonar feed and more - all alongside the ROV live video feed.



Simplified control



Seamless integrations



Constant communication



Enhanced operations

[LEARN MORE](#)

| | PIVOT SMART | PIVOT EXPERT | PIVOT NAV |
|--------------------------|---------------------------|--|-----------|
| HD Rotating Camera Head | ✓ | ✓ | ✓ |
| 7" LCD Controller | ✓ | ✓ | ✓ |
| 300M Depth Rating | ✓ | ✓ | ✓ |
| Tether Length | 100M | 150M | 300M |
| Tether Reel | ✓ | ✓ | ✓ |
| Tool Platform | - | ✓ | ✓ |
| Spare Batteries | - | ✓ | ✓ |
| Sensor Pack | ✓ | ✓ | ✓ |
| Carrying Cases | ✓ | ✓ | ✓ |
| Microphone | ✓ | ✓ | ✓ |
| Lighting | ✓ | ✓ | ✓ |
| Additional Lighting | - | ✓ | ✓ |
| Grabber | - | ✓ | ✓ |
| Fully Assembled and Test | ✓ | ✓ | ✓ |
| Warranty | One Year | One Year | Two Years |
| Online Training | - | ✓ | ✓ |
| USBL Positioning | - | - | ✓ |
| DVL | - | - | ✓ |
| Field Service Kit | - | - | ✓ |
| EXTRA ADD-ONS | | | |
| Imaging Sonar | NDT Tools | Custom Tether Lengths Service Kits Operational Enhancements Application Based Tools | |
| Mechanical Sonar | Grabbers and Manipulators | | |
| USBL | Sediment Samplers | | |
| DVL | Water Samplers | | |
| Side Scan | Additional Cameras | | |
| Water Quality Sensors | Additional Lighting | | |

UNDERWATER REMOTELY OPERATED VEHICLES & ROBOTS

With over a decade of proven performance, Canadian company, Deep Trekker, is one of the largest underwater ROV manufacturers in the world – delivering high quality, robust and portable underwater robots to industries ranging from aquaculture to municipal contracting, military and defense, search and rescue, shipping, infrastructure and more.

Head office

830 Trillium Dr
Kitchener, ON
Canada

DTPIVOT_ENG_0621_01

Chile Office

Ruta 5 Sur KM 1025 Bodega 5
(Megacentro1)
Puerto Montt, Los Lagos, Chile



deeptrekker.com
sales@deeptrekker.com