

GASTON COUNTY
BUILDING AND DEVELOPMENT SERVICES

VICINITY MAP
REZ-26-01-07-00240

LEGEND

- Roads
- ▭ Municipalities
- Subject Parcel(s)

The information provided on this map is not intended to be considered as a legal document or description. The GIS data provided by Gaston County is made without warranty. Primary sources from which this data was compiled must be consulted for verification of the information contained within. This map may not be resold or otherwise used for trade or commercial purposes without the expressed written consent of Gaston County, in accordance with NCGS





GASTON COUNTY
BUILDING AND DEVELOPMENT SERVICES

ORTHOPHOTO MAP
REZ-26-01-07-00240

LEGEND

- Roads
- ▭ Parcels
- ▭ Subject Parcel(s)

The information provided on this map is not intended to be considered as a legal document or description. The GIS data provided by Gaston County is made without warranty. Primary sources from which this data was compiled must be consulted for verification of the information contained within. This map may not be resold or otherwise used for trade or commercial purposes without the expressed written consent of Gaston County, in accordance with NCGS

0 0.01 0.02 0.04 Miles





GASTON COUNTY
BUILDING AND DEVELOPMENT SERVICES

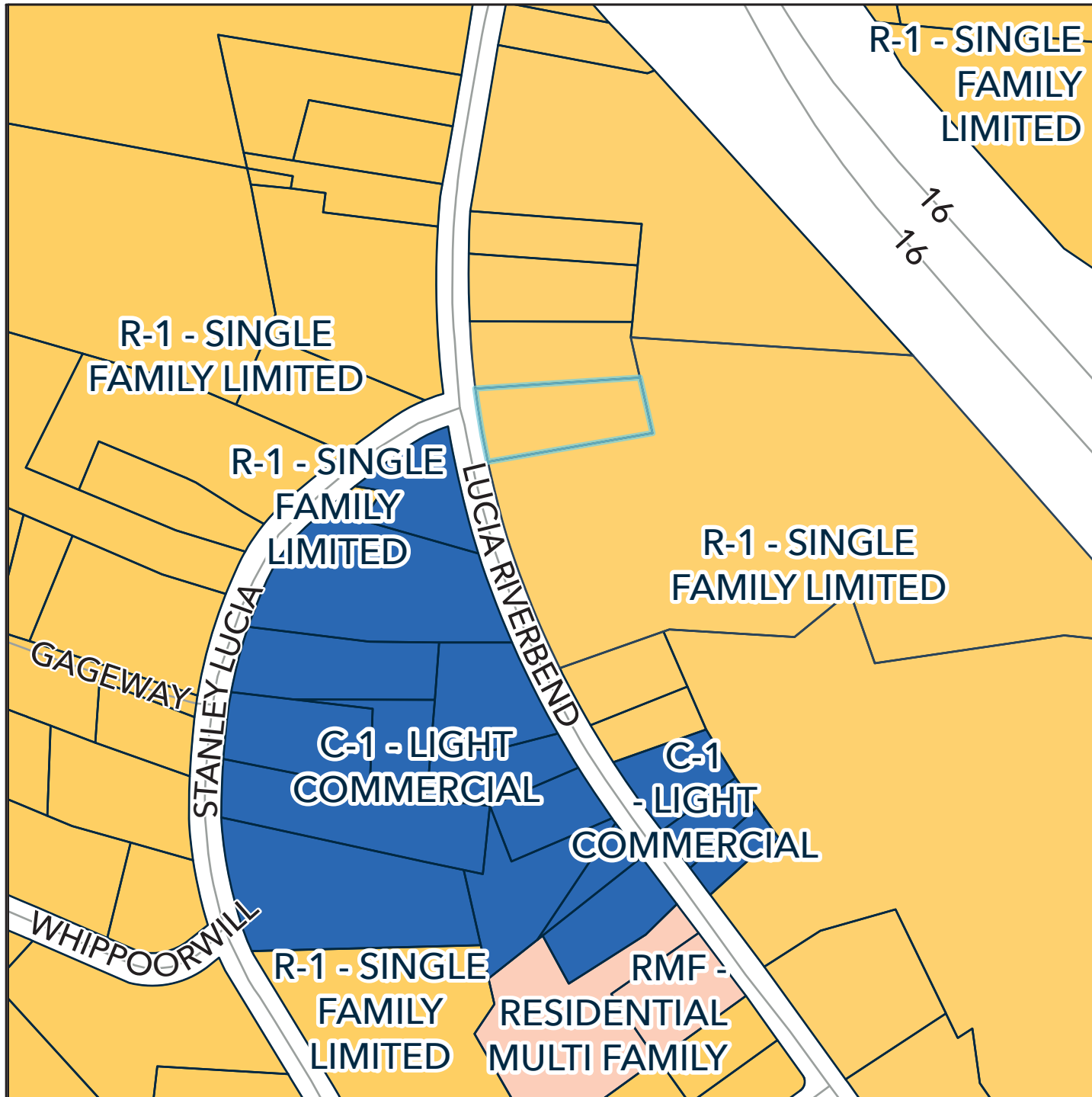
ZONING MAP REZ-26-01-07-00240

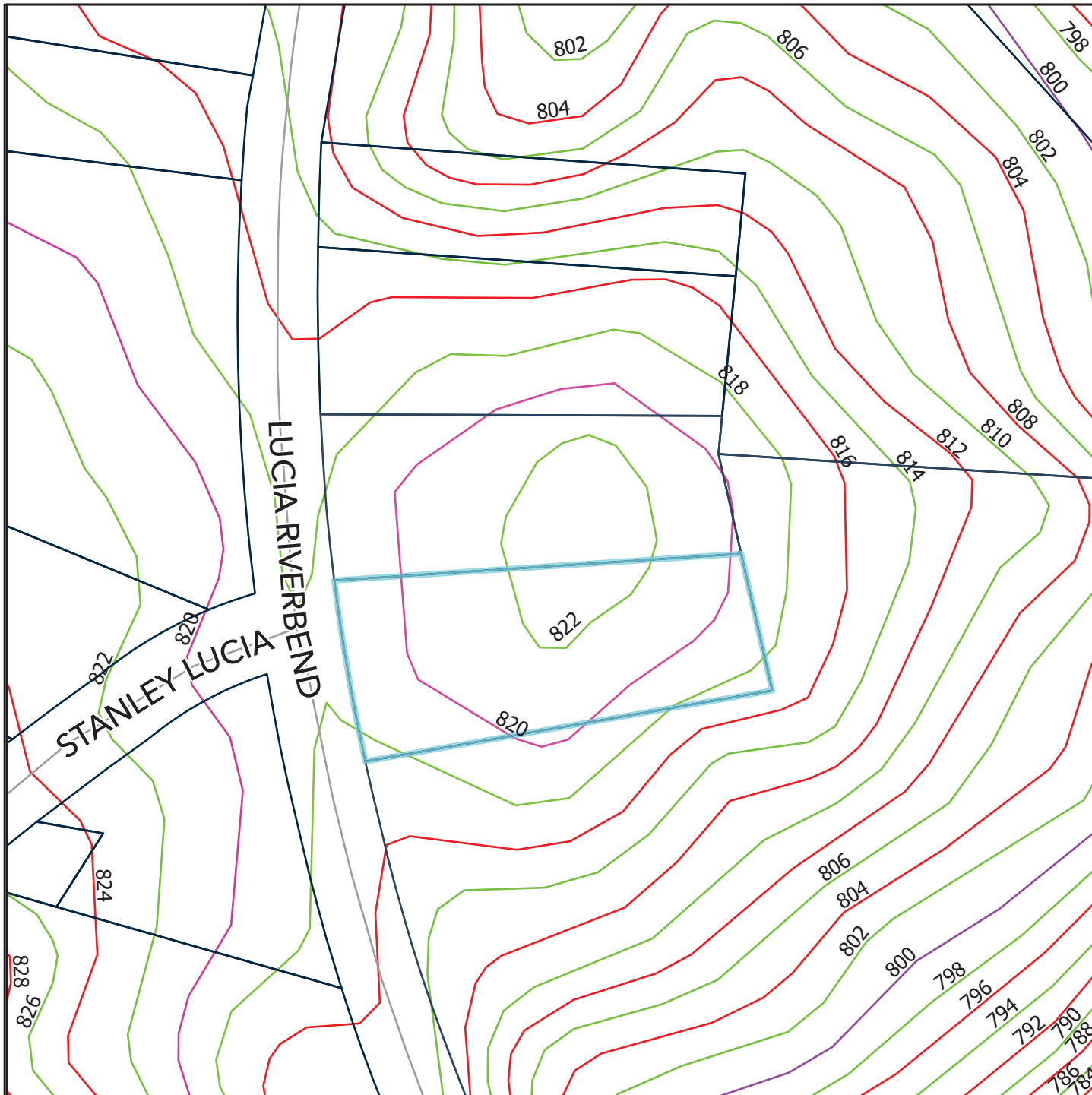
LEGEND

- Roads
- Parcels
- ZONE TYPE**
- C-1
- R-1
- RMF

The information provided on this map is not intended to be considered as a legal document or description. The GIS data provided by Gaston County is made without warranty. Primary sources from which this data was compiled must be consulted for verification of the information contained within. This map may not be resold or otherwise used for trade or commercial purposes without the expressed written consent of Gaston County, in accordance with NCGS

0 0.020.04 0.07 Miles





GASTON COUNTY
BUILDING AND DEVELOPMENT SERVICES

ENVIRONMENTAL MAP
REZ-26-01-07-00240

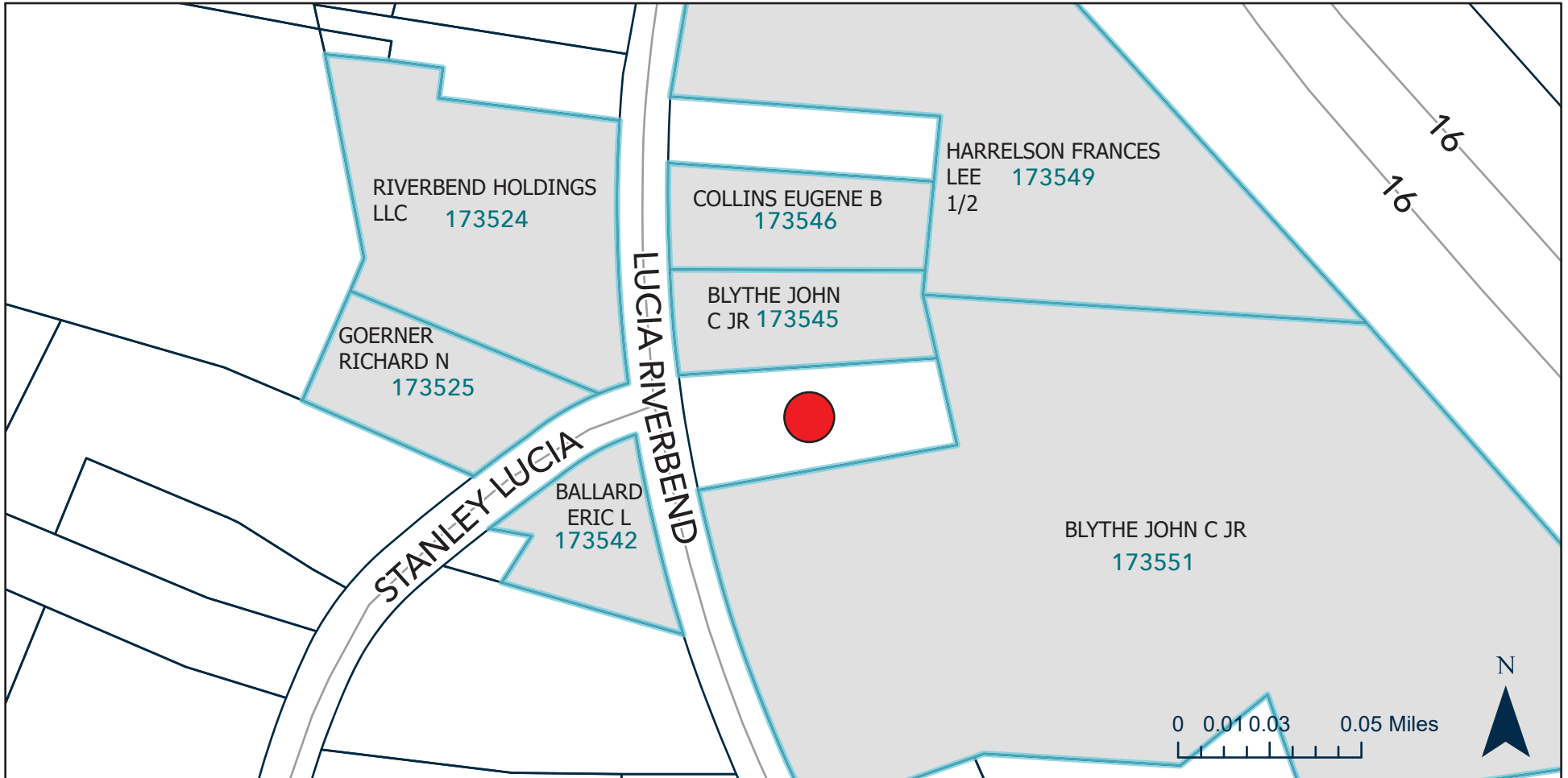
LEGEND

- Parcels
- Roads
- Subject Property
- 100ft Contours
- 2ft Contours
- 4ft Contours
- 20ft Contours
- Flood

The information provided on this map is not intended to be considered as a legal document or description. The GIS data provided by Gaston County is made without warranty. Primary sources from which this data was compiled must be consulted for verification of the information contained within. This map may not be resold or otherwise used for trade or commercial purposes without the expressed written consent of Gaston County, in accordance with NCGS 132-10.

0.0001 0.02 Miles





SUBJECT & ADJACENT PROPERTIES MAP | REZ-26-01-07-00240

LEGEND

 Subject Parcel(s)

The information provided on this map is not intended to be considered as a legal document or description. The GIS data provided by Gaston County is made without warranty. Primary sources from which this data was compiled must be consulted for verification of the information contained within. This map may not be resold or otherwise used for trade or commercial purposes without the expressed written consent of Gaston County, in accordance with NCGS 132-10.