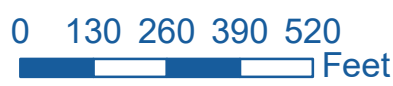




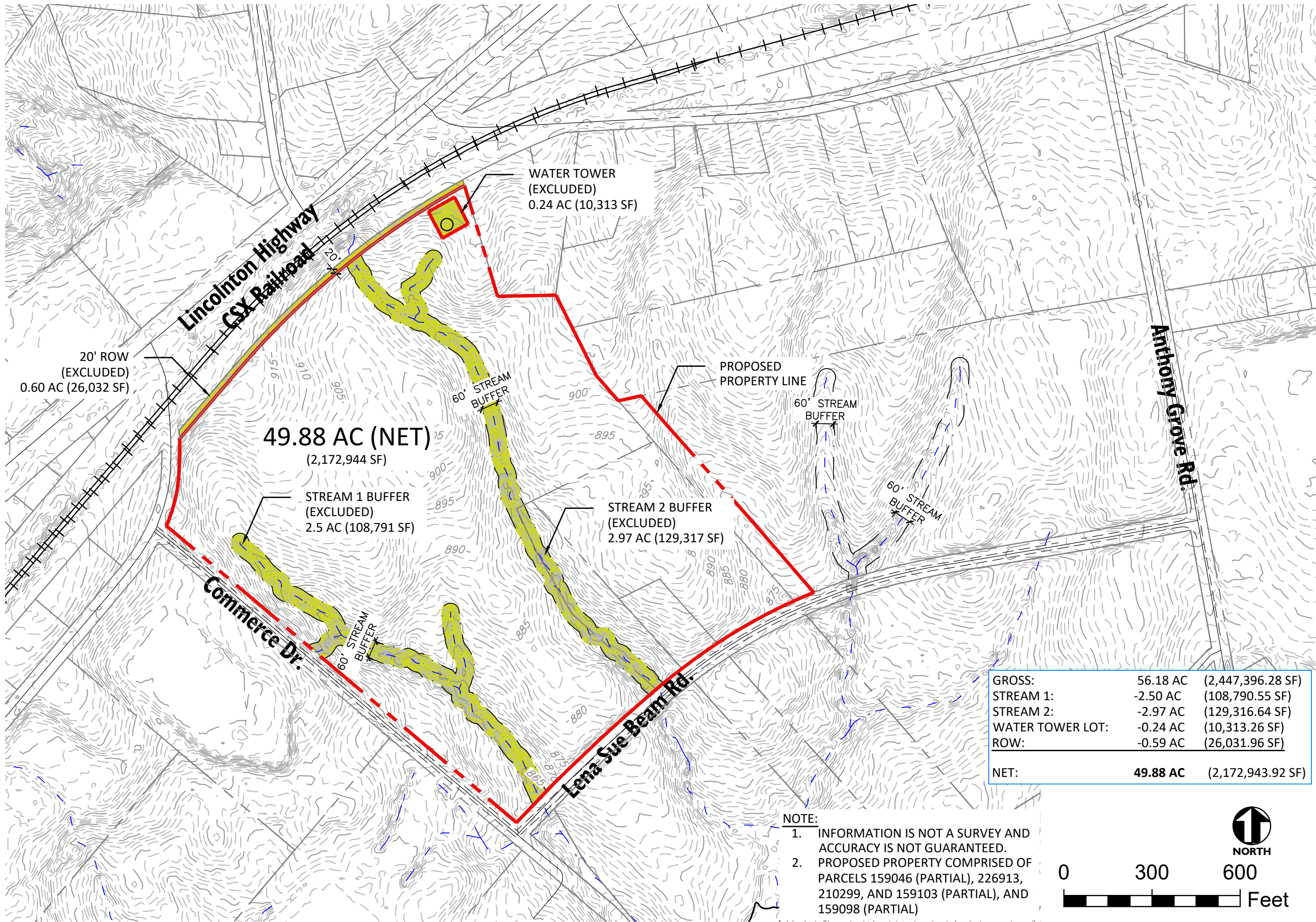
(+/-) 93 Acres
Cherryville Business Park
Proposed Property Boundary



LEGEND

 **Proposed Property**

This product has been created with the highest degree of accuracy possible. However, the Gaston County EDC cannot be held responsible for any damages due to errors or omissions in this product. Depiction of boundaries is not authoritative.



20' ROW
(EXCLUDED)
0.60 AC (26,032 SF)

49.88 AC (NET)
(2,172,944 SF)

STREAM 1 BUFFER
(EXCLUDED)
2.5 AC (108,791 SF)

STREAM 2 BUFFER
(EXCLUDED)
2.97 AC (129,317 SF)

WATER TOWER
(EXCLUDED)
0.24 AC (10,313 SF)

PROPOSED
PROPERTY LINE

60° STREAM
BUFFER

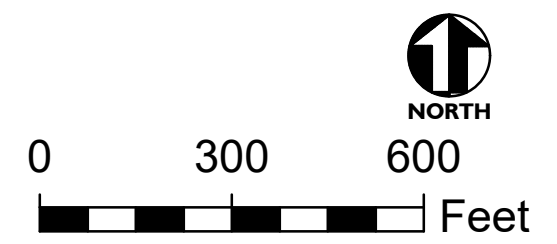
60° STREAM
BUFFER

60° STREAM
BUFFER

60° STREAM
BUFFER

GROSS:	56.18 AC	(2,447,396.28 SF)
STREAM 1:	-2.50 AC	(108,790.55 SF)
STREAM 2:	-2.97 AC	(129,316.64 SF)
WATER TOWER LOT:	-0.24 AC	(10,313.26 SF)
ROW:	-0.59 AC	(26,031.96 SF)
NET:	49.88 AC	(2,172,943.92 SF)

- NOTE:**
1. INFORMATION IS NOT A SURVEY AND ACCURACY IS NOT GUARANTEED.
 2. PROPOSED PROPERTY COMPRISED OF PARCELS 159046 (PARTIAL), 226913, 210299, AND 159103 (PARTIAL), AND 159098 (PARTIAL)



Cherryville Business Park

Cherryville, North Carolina