

## EXHIBIT A

## Project Garland Area of Interest

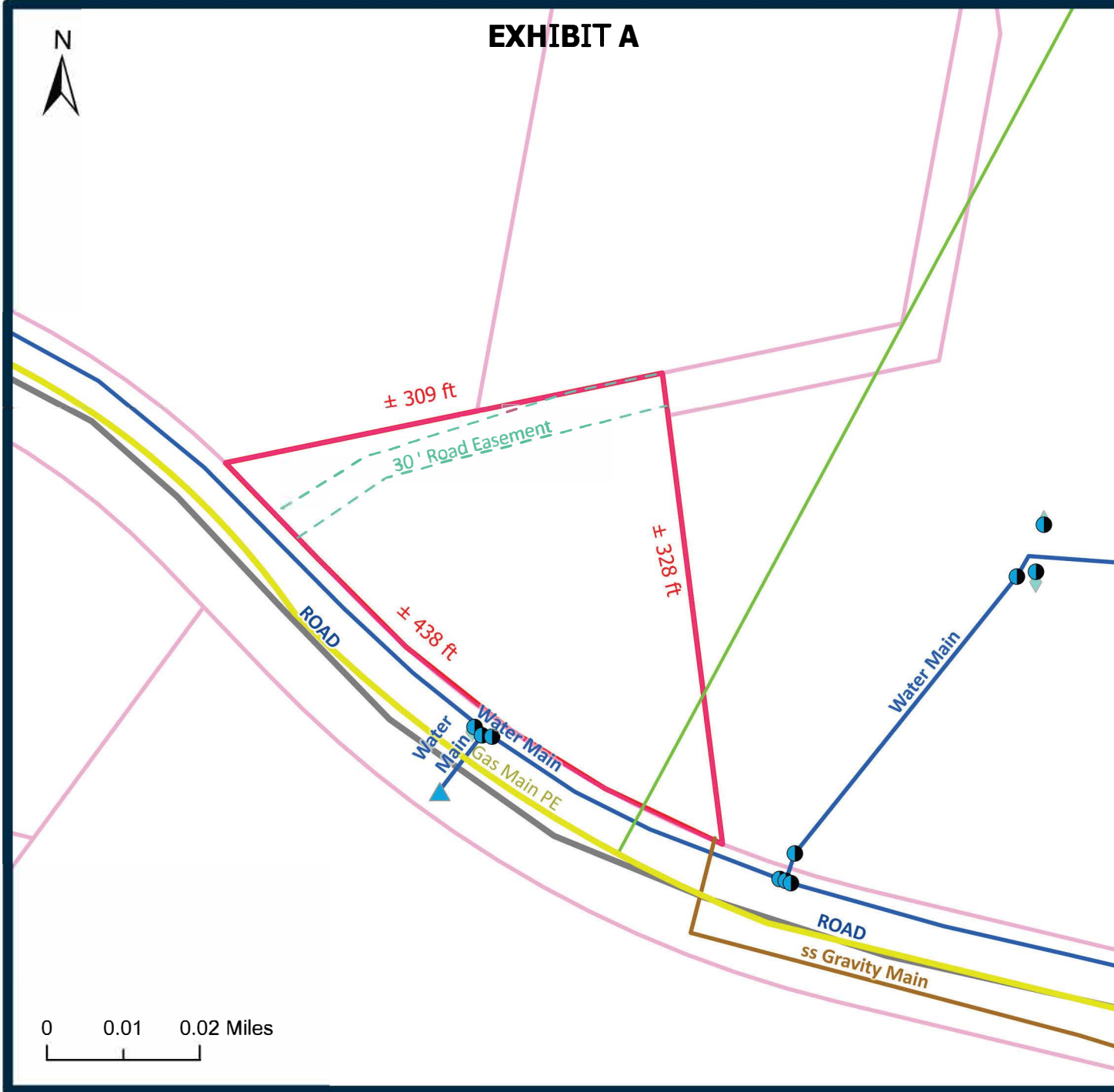
### LEGEND

- Area of Interest
- GIS\_Parcel\_CAMA\_2024
- Approximate Easement
- Southridge Gas System
  - Gas Main PE
  - Gas Service
- Southridge SS
  - ss\_GravityMain
- Southridge Water System
  - water\_SystemValves
  - water\_Fittings
  - water\_Main
  - water\_Hydrants
- Roads



**GASTON COUNTY**  
Local Strengths. Global Success.

0 0.01 0.02 Miles



The information provided on this map is not intended to be considered as a legal document or description. The GIS data provided by Gaston County is made without warranty. Primary sources from which this data was compiled must be consulted for verification of the information contained within.