



South Point Volunteer Fire Department, Inc.

2300 South Point Rd.

P.O. Box 1201

Belmont, NC 28012

704-825-3166

16 July, 2019

Gaston County Fire Advisory Board

Board Members,

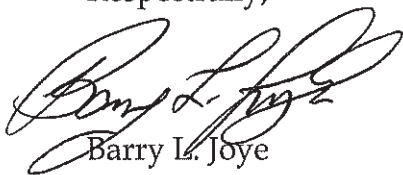
Included, you will find a request for withdrawal of the fire district reserve monies for South Point Volunteer Fire Department. The amount requested is **\$100,000.00** to support Operational and Training Facility Expansion needs for this and other departments. Department Board of Directors has approved me to request these monies for the following projects:

Budget Code 590 - Other Capital Outlay (Over \$300)


Clear 8/10ths of an acre on the department's property, purchase and install 3 shipping containers for Structural Training, and erect a garage to house 429 Service Vehicle

- Clear trees, roots, debris from the site, abandon 3 wells, grade property to specifications. **\$24,400.00**
- Install 5 Concrete Pads & repair 1 Concrete Pad. **\$26,500.00**
- Construct structural training aids consisting of Roof Entry and Multi-Level components for Internal Fire Tactics Training. **\$29,500.00**
- Purchase Structural Garage for 429 Service Vehicle. **\$4,100.00**
- Electrical Service. **\$11,200.00**
- Final grade, Driveway (ABC Crush/Run), Seed/Fertilizer. **\$4,300.00**

Respectfully,


Barry L. Joye
Fire Chief


Granvil W. Holt
Secretary, Board of Directors


Roy E. Smith
President, Board of Directors

SPVFD BOARD OF DIRECTORS
AGENDA & Minutes 16 July, 2019

1. Open Business Meeting – Roy Smith opened the meeting @6:00pm inviting Tommy Wilson to give the invocation and blessing on the food. Members present: Tommy Wilson, Randy Drennan, Lewis Armstrong, Tommy Bolton, David Ellington, Jimmy Mitchem, Tim Joy, Roy Smith Barry Joye, Granvil Holt. Excused absent: Barry Camp, Brandon Branch, Mike Clark.
2. **RESOLUTIONS:** There are no written or other prior resolutions to address at this Election Meeting.
3. **POINT OF ORDER - NO OTHER** Discussions will be addressed at this meeting.
4. **MINUTES – June 2019 (Granvil Holt)** – Accepted as read with changes to 7B. The pad dimensions to be established 14'x24' change 14'x26'.
5. **Financial Report – June 2019 (Granvil Holt)** - Accepted as read with comments: Jimmy Mitchem ask about the insurance budget, would we be over budget with the payment of \$4,415.00 to VSWFC. Roy Smith stated that we had an overage of \$993.00. Roy Smith also explained the year end run \$413,544.00- \$407,117.02 leaving a balance of \$6,426.98 left at the end of the month.
6. **OLD BUSINESS**
 - a. **Install Emergency Signal on SP Rd.** **ADDENDUM 1:** Encroachment Right of Way: Documentation filed with DOT.
 - a. **Land / Tower: (CLOSED)** The space to extend 30 foot into the woods and to the fence line.
 - b. **Sewer Leach Field Surface Area: (OPEN)** We need to have fill dirt put in the low areas to prevent rain water from pooling in the Branch Lines. Roy contacted CHOICE Landscaping to repair this.
 - c. **Surface Water Drainage:** (HOLD) some backhoe work done to open drainage... Will include this repair in the Training Area Project.
 - d. **Training Site:** **Scope of work given to (6) contractors: Two responded, Tyler Lineberger - \$22,000, Brooks Luckadoo - \$24,500.** Scope identified less than one (1) acre to be cleared for site preparation The scope will include removal of **all** trees and root systems, all undergrowth inside the project area and most **undergrowth on** the remaining property, pack soil surface and prepare for seeding, install drive access and apply rock for ingress/egress. It was decided by the board that all pads needed to be 8 inches in depth with reinforced wire mesh. Roy Smith called for a motion for Tyler Lineberger to be contractor for the general grading. Tommy Bolton Motioned with Tommy Wilson seconding. All Board Members voted in the affirmative with no negative or abstaining votes.
7. **NEW BUSINESS:**
 - a. **Transport Vehicle:** Truck has arrived at the Dealership in Ashville and Add-on features are being installed.
 - b. **Vehicle Garages/Concrete Pads:**

MEDIC: Waiting for specifications from Medic for electrical requirements. CHANGE TO SCOPE – Provide electrical service for SP429 Service Vehicle, Training Area, and Medic from the Siren Pole. When the usage requirements are identified, Duke Energy will approve the SOURCE.

SP429 Service Vehicle: The pad dimensions are established, 12' x 26' with a curved entrance from the pavement to the pad. Roy contacted D&M Concrete (Mike Small). Mike stated that he would give an estimate on all concrete work to be installed at the same mobilization. This will keep the cost down. He sent an estimate of \$4353.30 based on a 6" depth. (see next para.) It was decided by the board that all pads needed to be 8 inches in depth with reinforced wire mesh. Jimmy Mitchem ask that all concrete depth be specified as a 8 inch minimum.

Concrete Pads: We identified all pads and concrete needed. This included:

Extend existing pad by 14' for medic vehicle (provide adequate water drainage) 12'3"x14'x8" add on 34'total

Install SP429 pad 12'x26'x8"

Install pad for storage building 14'x16'x8"

Install Vehicle Extrication pad 14'x24'x8"

Install pad for shipping containers 16'x40'x8"

Remove damaged concrete and apply new concrete in front of the storage bldg.

Upon review I recognized that I missed giving Mike the depth of 8" and required metal reinforcement in some areas along with clarifying if he including backfill & drainage repairs behind the existing pad. I gave him this info. for estimate adjustment. Electrical not included, Duke to advise. Work to be accomplished in 3 phases 1 clearing, 2 pads and electrical, 3 finished land surfaces. Tommy Wilson ask about Duke possibly providing lighting. No fire in containers; smoke machine only. Curb on extraction with sloping drainage each end. ***After the Board discussion Roy Smith ask for a motion to ask the County for \$100,000.00 of Reserve Funds to complete the project. Tommy Wilson Motioned with Granvil Holt seconding. All Board Members voted in the affirmative with no negative or abstaining votes. Belmont to share in the repairs of the broken pad for GEMS only. \$367,763.00+ is the amount the County is holding for us.***

8. CHIEF'S REVIEW / NEW BUSINESS –

Chief's Department Status and Monthly Activities.

In the process of identifying (no service) on some of our backroads. Only one **no-service** to a house at end of Davis Road.

Committee's review the status of projects assigned to the Chief:

Chief shall provide all documents and resources as required.

_Tommy Wilson inquired about our department's equipment needs and the present condition of the equipment we were now using. Roy Smith and Barry Joye replied stating that all our equipment was in excellent condition and that we did not need anything at this time. It was discovered that we did not have an AED or medical bag in the building. Other that what was on the trucks. The board also discussed volunteers becoming obsolete. Other departments going to 2x24 hr. = 12 hr. shifts.

Meeting Adjourned – 8:18 pm Minutes prepared by Granvil Holt

NEXT MEETING: Aug. 13 2019 - 6 pm

LOG IN | SIGN UP

This is plans being used for South Point

Search this site

Search

NEWS ADVOCATE



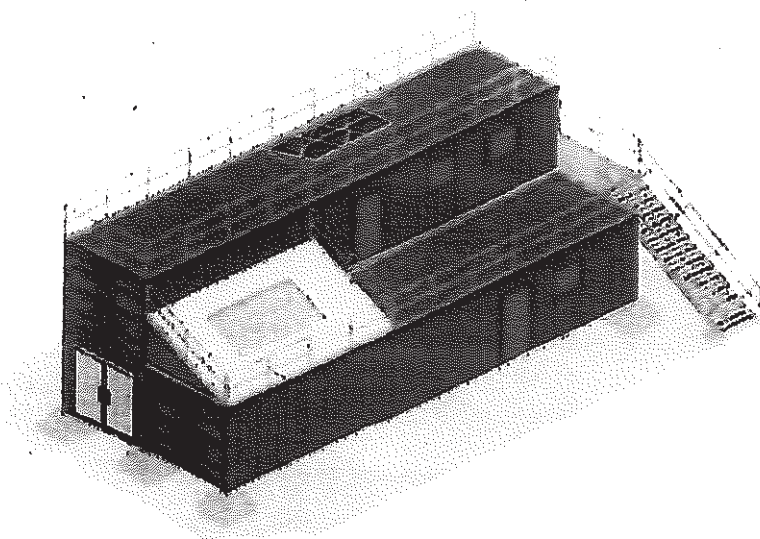
[Home](#) [News ▾](#) [Sports ▾](#) [Opinion ▾](#) [Obituaries](#) [Classifieds](#) [Photos](#)

[E-Edition](#) [Subscribe](#) [Citizen of the Year](#)

[Home](#) / [Local News](#) / [County firefighting association to build training site](#)

County firefighting association to build training site

Posted by Justine McGuire on June 26th, 2015



Shipping containers will be used to create a training facility for the Manistee County Firefighters Association, which will be located at the Manistee Township Fire Station. (Courtesy photo)

MANISTEE — Firefighters in Manistee County will soon be able to more easily and effectively flex their firefighting muscles.

The Manistee County Firefighters Association is building a training facility that will be available for all fire departments throughout the county. The total cost of the facility is about \$23,000, of which \$11,000 has been obtained through grants.

Recently Added

[News Advocate E-Edition 7.26.19](#)

[Saints to host Midland Tribe this weekend](#)

[Manistee's Lampen collects hardware at state meet](#)

[Sea Lamprey control planned for Lake Michigan tributary](#)

[Church holds week-long community work project](#)

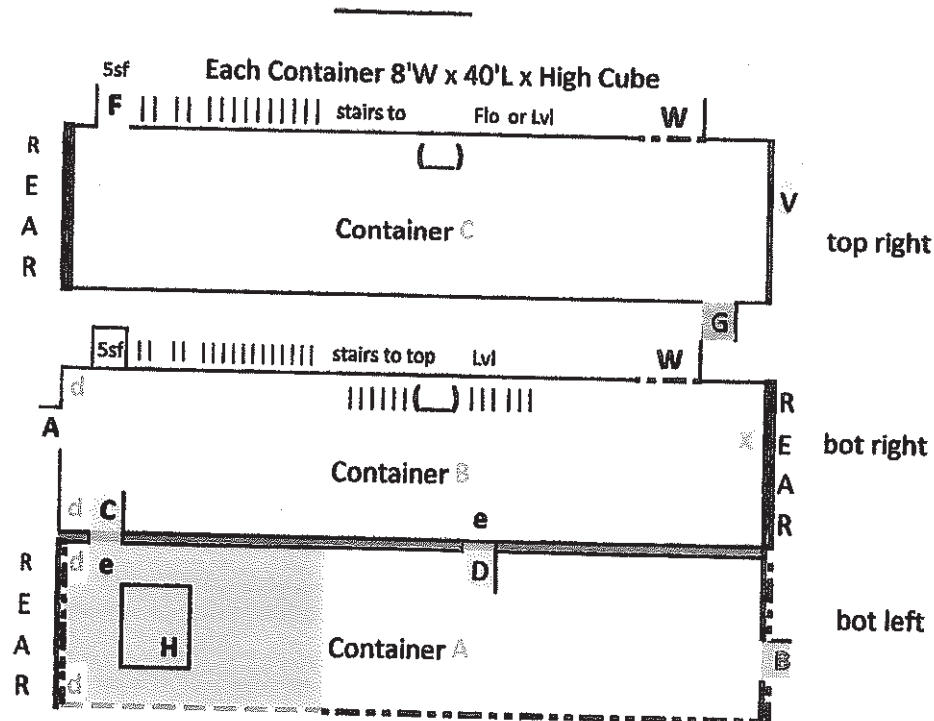
[KARL W. SMITH: Trump's folly on food stamps](#)

[U.S. House passes legislation to prop up Teamsters, multi-employer pension plans](#)

[Looking Back for July 26](#)

[GLENN ZARING: A time for mourning...](#)

[International Joint Commission takes Great Lakes input](#)



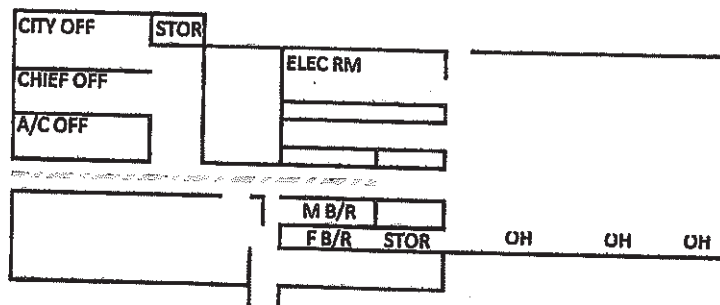
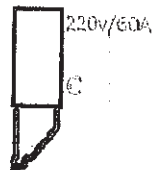
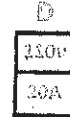
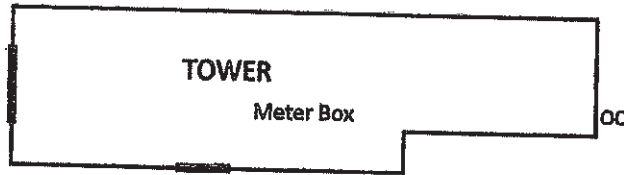
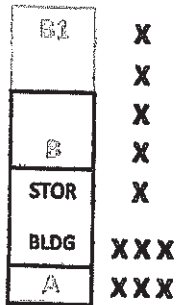
All openings require watertight seal.

- A=** Exterior Metal Door 36", Left Hinge out. 3' from end
- B=** Exterior Metal Door 36", Rt. Hinge out. 3 feet from end.
- C=** Exterior Metal Door 36", Left Hinge 2 feet from end.
- D=** Exterior Metal Door 36", Right Hinge 6 feet from end.
- e=** Entry way cut to door dem. C & D attached in through way
- F=** Exterior Metal Door, Right Hinge out, 2 feet from end.
- G=** Exterior Metal Door, Right Hinge out, 2 feet from end.
- H=** Roof Training Slope
- d=** Floor Drain
- V=** Louvered vent with screen (Alum) NLT 16"x16" at highest point
- W=** Window Opening 36" sq W/Metal Frame and Door Cover (cap) hinged out to the left, 40" above floor.
- X=** Forcible Entry Tmg. Door provided/installed by SPVFD
- Angle Steel, 90 deg., welded atop containers A&B to prevent water and debris from entering void between containers. Flat steel welded to Front & Rear Verticle voids as well.**
- ()** Second Floor Stairs Entry
- Container C will be placed on Container B
- Containers shall be securly welded at Vertical & Horizontal Structural Corners to prevent movement.
- Top Safety Rail**
- Roof Traning Slope**
- Removable Safety Rail**

WOODLAND

GRASS

220v/60A



Twr

Driveway

S P Rd.

- A= Existing Concrete pad req. Removal/Replace \$3900.00
- B= Adding additional 12'x24' conc. Pad for Gems 121Q
- B1= Additional fill dirt to maintain adequate surface drainage
- C= Conc. Pad and 3 wall garage for 429
- D= New Conc. Pad to relocate Storage Bldg.
- E= Conc. Pad 14'x24'x8" w/reverse slope gutter - Vehicle Extrication
- F= Three High Cube Storage Containers for Smk Hse/Roof Trng.
- = Duke Energy Utility Pole w/Meter
- OO= Area Lighting on 40' Wood Utility Pole.